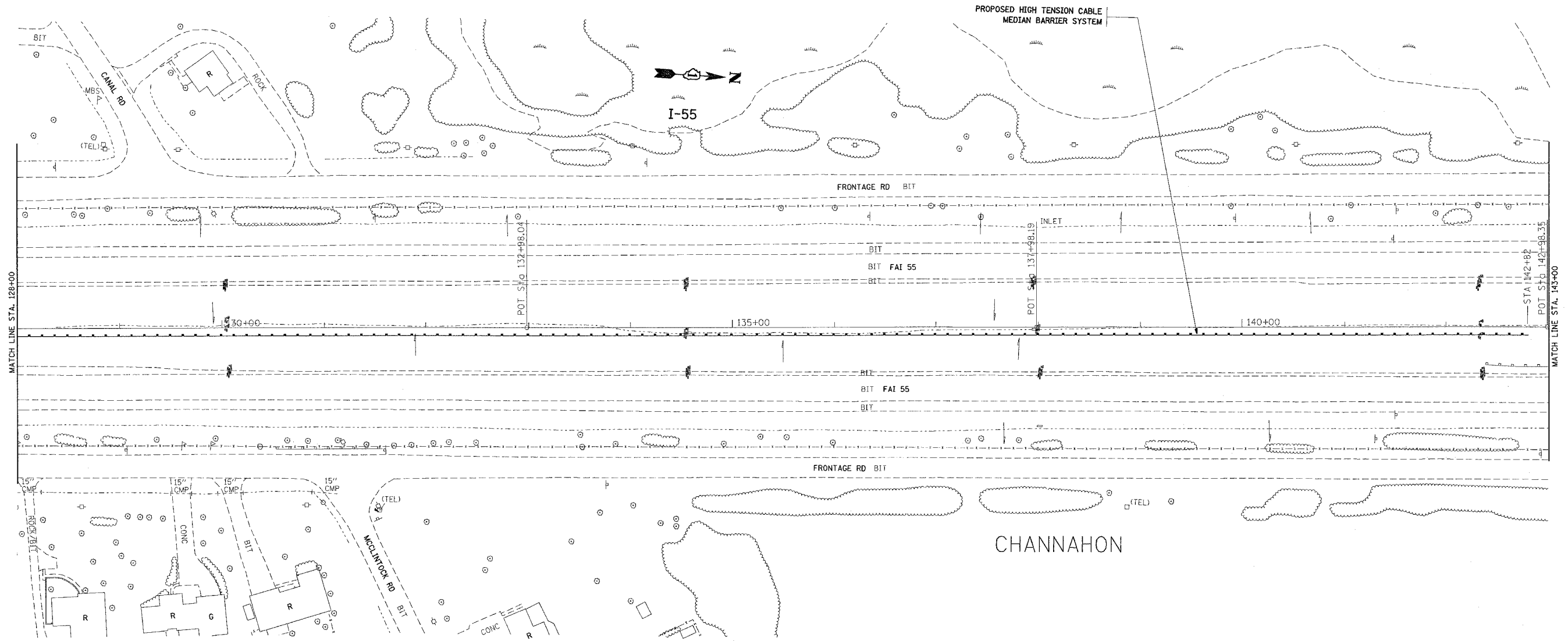


F.A.I. RTE.	SECTION	COUNTY	TOTAL SHEETS	SHEET NO.
55	2005-040 GRR	WILL	14	8
STA. 128+00		TO STA. 143+00		
FED. ROAD DIST. NO.	ILLINOIS	FED. AID PROJECT		



MATCH LINE STA. 128+00

MATCH LINE STA. 143+00

REVISIONS	
NAME	DATE

ILLINOIS DEPARTMENT OF TRANSPORTATION

FAI 55/ I-55
US 6 TO SOUTH OF I-80
EXISTING / PROPOSED ROADWAY PLAN

SCALE: VERT. 1"=50'
 HORIZ. 1"=50'
 DATE 7/8/2005

DRAWN BY: HMO
 CHECKED BY:

PLOT DATE = 7/9/2005
 FILE NAME = c:\pwork\60a11\27285\sh1-1-95ec-2.dwg
 PLOT SCALE = 50,000 / IN.
 USER NAME = omarhjm