

F.A.I. RTE.	SECTION	COUNTY	TOTAL SHEETS	SHEET NO.
55	2005-040 GRR	WILL	14	1

D-91-272-05



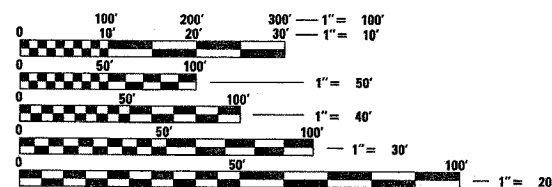
STATE OF ILLINOIS  
 DEPARTMENT OF TRANSPORTATION  
 DIVISION OF HIGHWAYS  
**PLANS FOR PROPOSED  
 HIGHWAY**

**FAI 55 : (INTERSTATE 55)  
 (US 6 TO SOUTH OF I-80)  
 SECTION: 2005-040 GRR  
 GUARDRAIL INSTALLATION  
 WILL COUNTY  
 C-91-272-05  
 PROJECT: HS-055-6(217) 248**

FOR INDEX OF SHEETS, SEE SHEET NO. 2

THE IMPROVEMENT IS LOCATED IN THE VILLAGE OF CHANNAHON IN WILL COUNTY

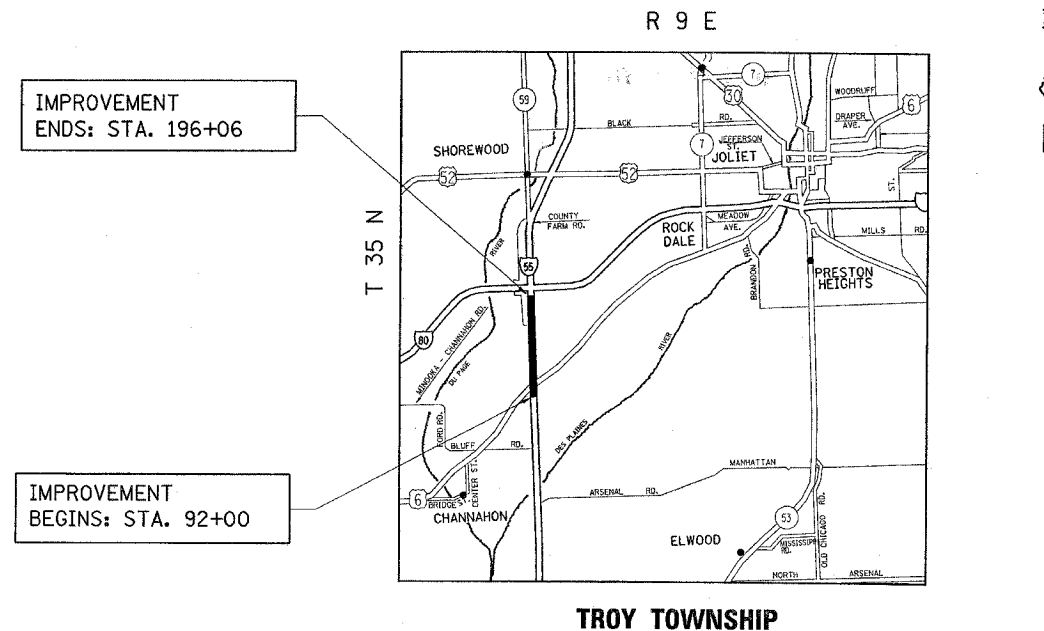
DISTRICT ONE DESIGN PLAN PREPARATION ENGINEER:  
 KEN ENGISSAM RAYAN (847)705-4240



FULL SIZE PLANS HAVE BEEN PREPARED USING STANDARD ENGINEERING SCALES. REDUCED SIZED PLANS WILL NOT CONFORM TO STANDARD SCALES. IN MAKING MEASUREMENTS ON REDUCED PLANS, THE ABOVE SCALES MAY BE USED.

J.U.L.I.E.  
 JOINT UTILITY LOCATION INFORMATION FOR EXCAVATION  
 1-800-892-0123

CONTRACT NO. 60A11



**TRAFFIC DATA**

ADT = 40,000 - 60,000  
 POSTED SPEED LIMIT= 65 MPH

GROSS LENGTH OF IMPROVEMENT = 10406 LINEAL FEET = 1.97 MILES  
 NET LENGTH OF IMPROVEMENT = 9135 LINEAL FEET = 1.73 MILES

STATE OF ILLINOIS  
 DEPARTMENT OF TRANSPORTATION  
 DIVISION OF HIGHWAYS

SUBMITTED July 8, 20 05  
Dina O'Keefe  
 DEPUTY DIRECTOR OF HIGHWAYS, REGION ENGINEER

August 19, 20 05  
Mike Hine  
 ENGINEER OF DESIGN AND ENVIRONMENT

August 19, 20 05  
Victor Mader  
 DIRECTOR OF HIGHWAYS, CHIEF ENGINEER

**PRINTED BY THE AUTHORITY  
 OF THE STATE OF ILLINOIS**

F.A.I. RTE.	SECTION	COUNTY	TOTAL SHEETS	SHEET NO.
55	2005-040 GRR	WILL	14	2
STA.		TO STA.		
FED. ROAD DIST. NO. 1	ILLINOIS	FED. AID PROJECT		
CONTRACT 60A11				

INDEX OF SHEETS

SHEET NO.	DESCRIPTION
1	COVER SHEET
2	INDEX OF SHEETS, STANDARDS, AND GENERAL NOTES
3	SUMMARY OF QUANTITIES
4	TYPICAL SECTIONS
5-13	EXISTING AND PROPOSED ROADWAY PLAN
14	TRAFFIC CONTROL FOR FREWAY SHOULDER CLOSURES PARTIAL RAMP CLOSURES

LIST OF STATE STANDARDS

STANDARD NO.	DESCRIPTION
701101-01	OFF-RD OPERATIONS, MULTILANE LESS THAN 4.5 M (15') AWAY FOR SPEEDS $\geq$ 45 MPH
701400-02	APPROACH TO LANE CLOSURE, FREEWAY/EXPRESSWAY
701401-03	LANE CLOSURE, FREEWAY/EXPRESSWAY
702001-05	TRAFFIC CONTROL DEVICES

PLAN NOTES

- BEFORE STARTING ANY EXCAVATION, THE CONTRACTOR SHALL CALL "JULIE" AT (800)892-0123 FOR FIELD LOCATIONS OF BURIED ELECTRIC, TELEPHONE AND GAS FACILITIES. (48 HOURS NOTIFICATION IS REQUIRED.)
- THE CONTRACTOR SHALL COORDINATE CONSTRUCTION ACTIVITIES WITH UTILITY COMPANIES.
- THE CONTRACTOR WILL NOT BE ALLOWED TO SET UP A YARD OR FIELD OFFICE ON STATE PROPERTY WITHOUT WRITTEN PERMISSION FROM THE DEPARTMENT.
- THE CONTRACTOR SHALL CALL STATE ELECTRICAL CONTRACTOR AT (773) 287-7600 TO LOCATE STATE OWNED FACILITIES.

REVISIONS	
NAME	DATE

ILLINOIS DEPARTMENT OF TRANSPORTATION

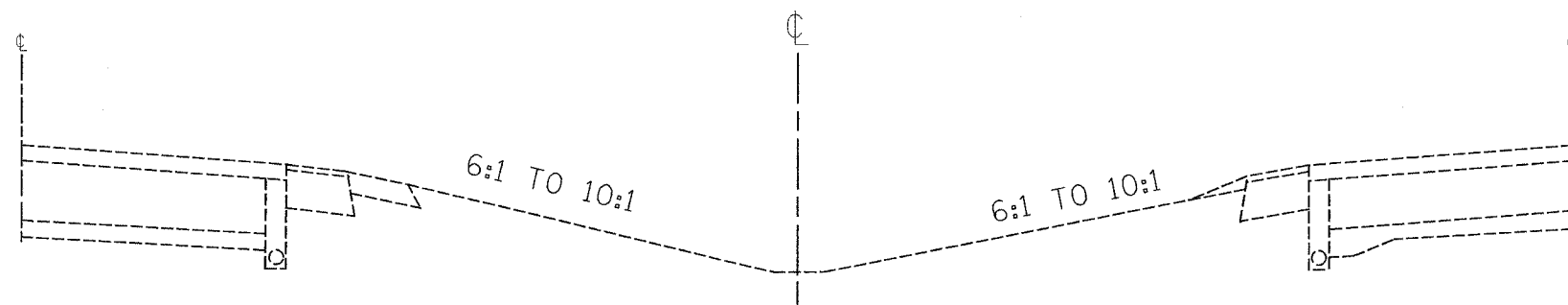
**INTERSTATE 55  
INDEX OF SHEETS  
LIST OF STATE STANDARDS  
PLAN NOTES**

SCALE: VERT. : NONE  
HORIZ. : NONE  
DATE

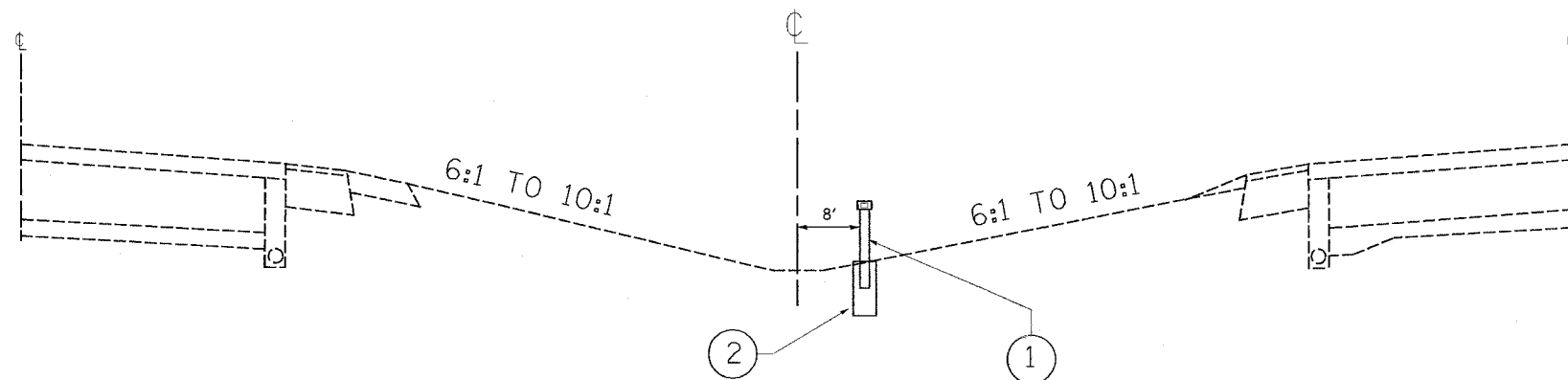
DRAWN BY: HMO  
CHECKED BY:



P. A. L. RTE.	SECTION	COUNTY	TOTAL SHEETS	SHEET NO.
55	2005-040 GRR	WILL	14	4
STA.		TO STA.		
FED. ROAD DIST. NO. 1		ILLINOIS		
		FED. AID PROJECT		
CONTRACT 60A11				



I-55  
EXISTING TYPICAL CROSS SECTION  
STA 92+00 TO STA 196+00



I-55  
PROPOSED TYPICAL CROSS SECTION  
STA 92+00 TO STA 196+00

NOTES:

1. POST SPACING, FOUNDATION SIZE AND END ANCHORAGE SHALL BE IN ACCORDANCE WITH MANUFACTURER'S SPECIFICATIONS.
2. A PRESMAIC REFLECTOR (YELLOW) SHALL BE PLACED ON BOTH SIDES OF THE POST CAB AT 100 FT. SPACING. THIS WORK SHALL BE INCLUDED IN THE COST OF THE HIGH TENSION CABLE MEDIAN BARRIER SYSTEM.
3. TERMINAL SECTIONS FOR THE CABLE GUARD RAIL SHALL BE IN ACCORDANCE WITH THE MANUFACTURER'S SPECIFICATIONS AND SHALL BE INCLUDED IN THE COST OF THE HIGH TENSION CABLE MEDIAN BARRIER SYSTEM.

LEGEND

- ① HIGH TENSION CABLE MEDIAN BARRIER SYSTEM
- ② CONCRETE FOUNDATION - INCLUDED IN THE COST OF THE HIGH TENSION CABLE MEDIAN BARRIER SYSTEM

REVISIONS	
NAME	DATE

ILLINOIS DEPARTMENT OF TRANSPORTATION

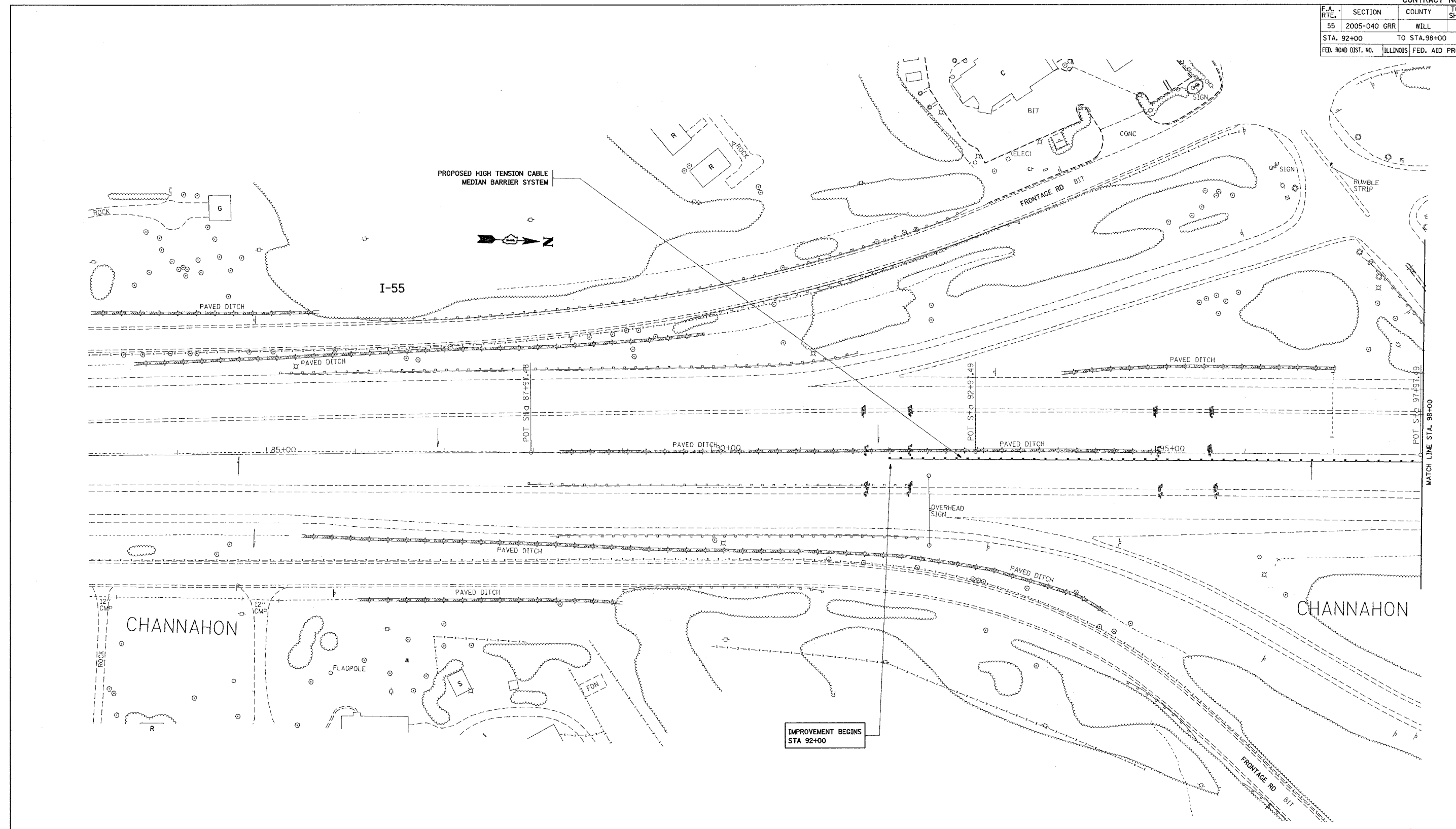
**TYPICAL SECTIONS**

SCALE: NONE  
DATE 7/8/2005

DRAWN BY: HMO  
CHECKED BY:

CONTRACT NO. 60A11

F.A. RTE.	SECTION	COUNTY	TOTAL SHEETS	SHEET NO.
55	2005-040 GRR	WILL	14	5
STA. 92+00		TO STA. 98+00		
FED. ROAD DIST. NO.		ILLINOIS FED. AID PROJECT		



MATCH LINE STA. 98+00

REVISIONS	
NAME	DATE

ILLINOIS DEPARTMENT OF TRANSPORTATION  
**FAI 55/ I-55**  
**US 6 TO SOUTH OF I-80**  
**EXISTING / PROPOSED ROADWAY PLAN**

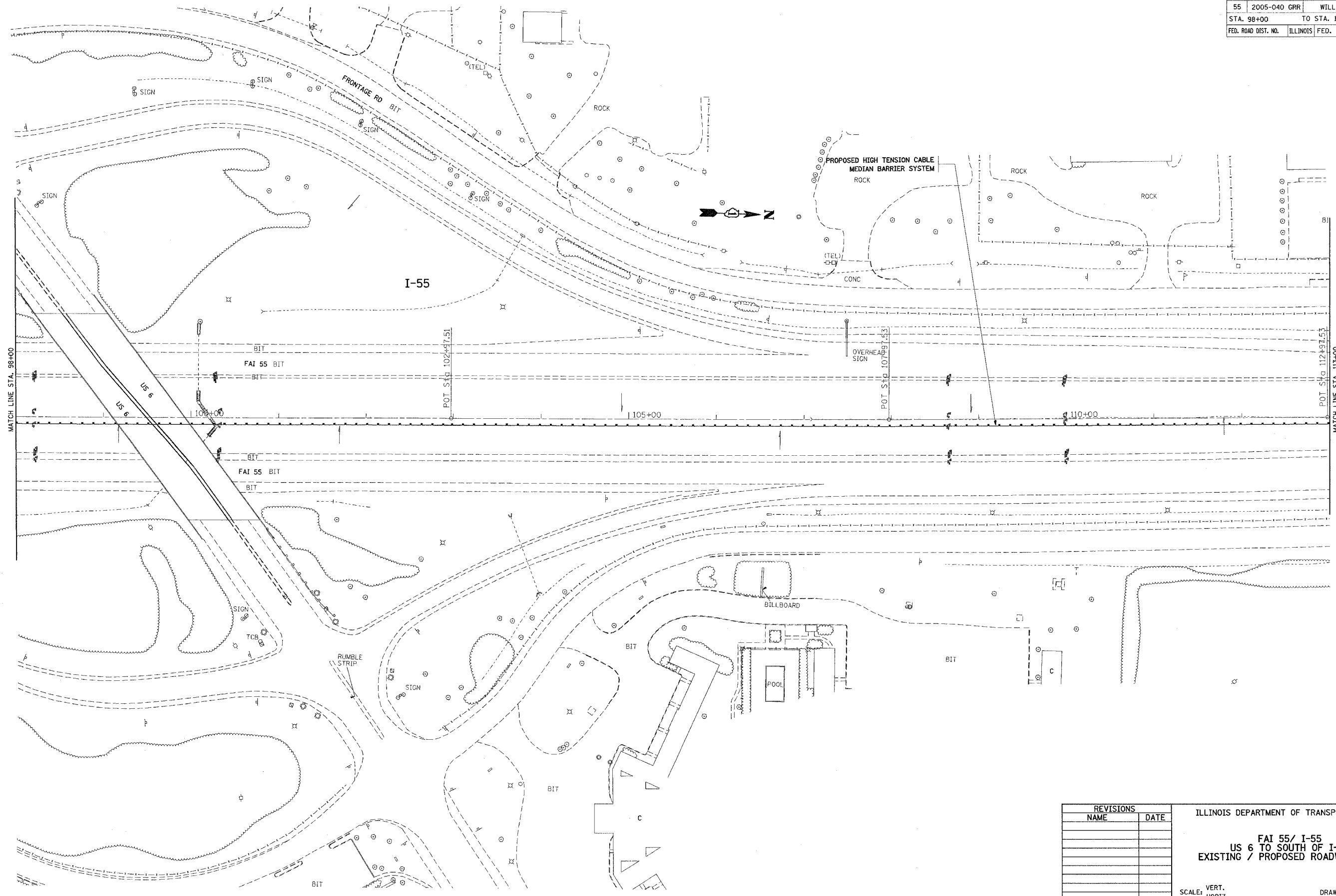
SCALE: VERT. 1"=50'  
 HORIZ. 1"=50'  
 DATE 7/8/2005  
 DRAWN BY: HMO  
 CHECKED BY:

10:25:07 07/08/2005

PLOT DATE = 7/8/2005  
 FILE NAME = o:\projects\60a11\27285\shh\1-1500-2.dwg  
 PLOT SCALE = 5/8/2005 / IN.  
 USER NAME = omanrh

CONTRACT NO. 60A11

F.A.I. RTE.	SECTION	COUNTY	TOTAL SHEETS	SHEET NO.
55	2005-040 GPR	WILL	14	6
STA. 98+00		TO STA. 113+00		
FED. ROAD DIST. NO.	ILLINOIS	FED. AID PROJECT		



REVISIONS	
NAME	DATE

ILLINOIS DEPARTMENT OF TRANSPORTATION

**FAI 55/ I-55**  
**US 6 TO SOUTH OF I-80**  
**EXISTING / PROPOSED ROADWAY PLAN**

SCALE: VERT. \_\_\_\_\_  
 HORIZ. \_\_\_\_\_

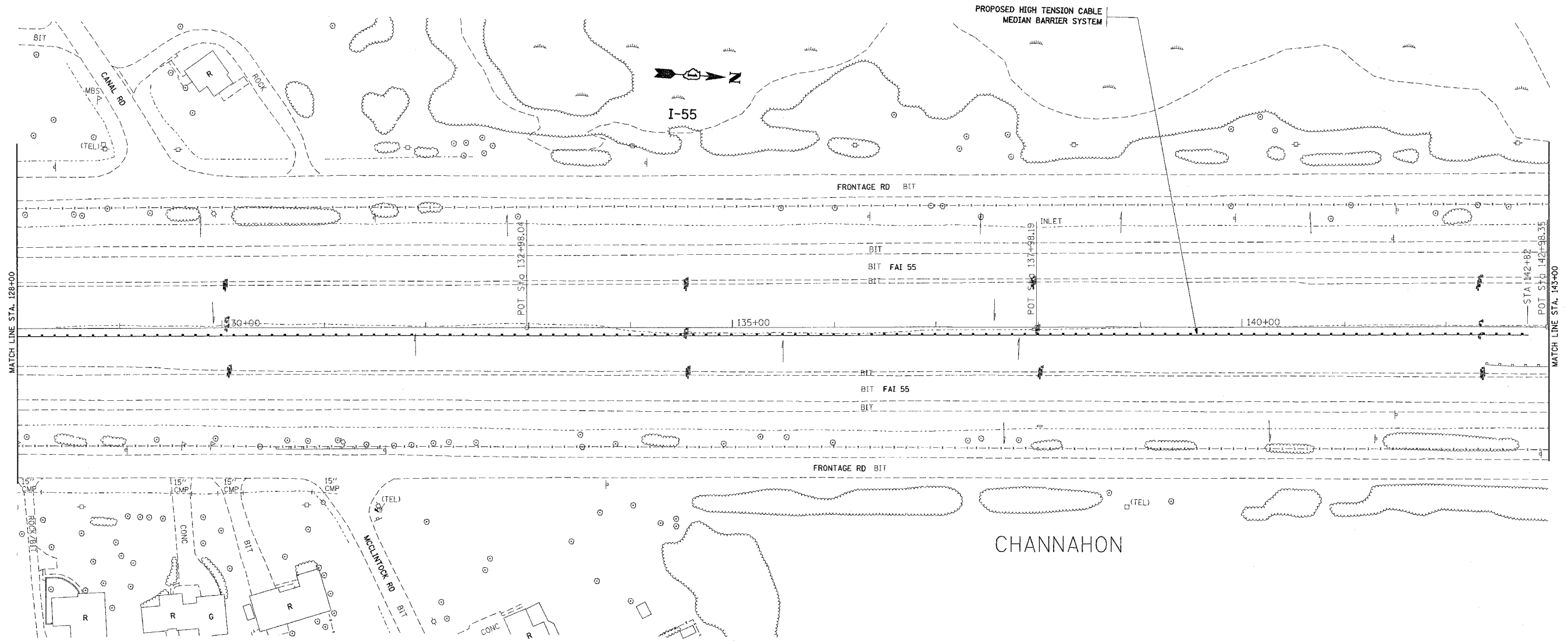
DRAWN BY: HMO  
 CHECKED BY: \_\_\_\_\_

PLOT DATE = 7/16/2005  
 FILE NAME = c:\p\proj\60a11\27295\sh\113550-2.dwg  
 PLOT SCALE = 5/8" = 1' IN.  
 USER NAME = csmnhan

10148:124 01/08/2000



F.A.I. RTE.	SECTION	COUNTY	TOTAL SHEETS	SHEET NO.
55	2005-040 GRR	WILL	14	8
STA. 128+00		TO STA. 143+00		
FED. ROAD DIST. NO.	ILLINOIS	FED. AID PROJECT		



MATCH LINE STA. 128+00

MATCH LINE STA. 143+00

CHANNAHON

REVISIONS	
NAME	DATE

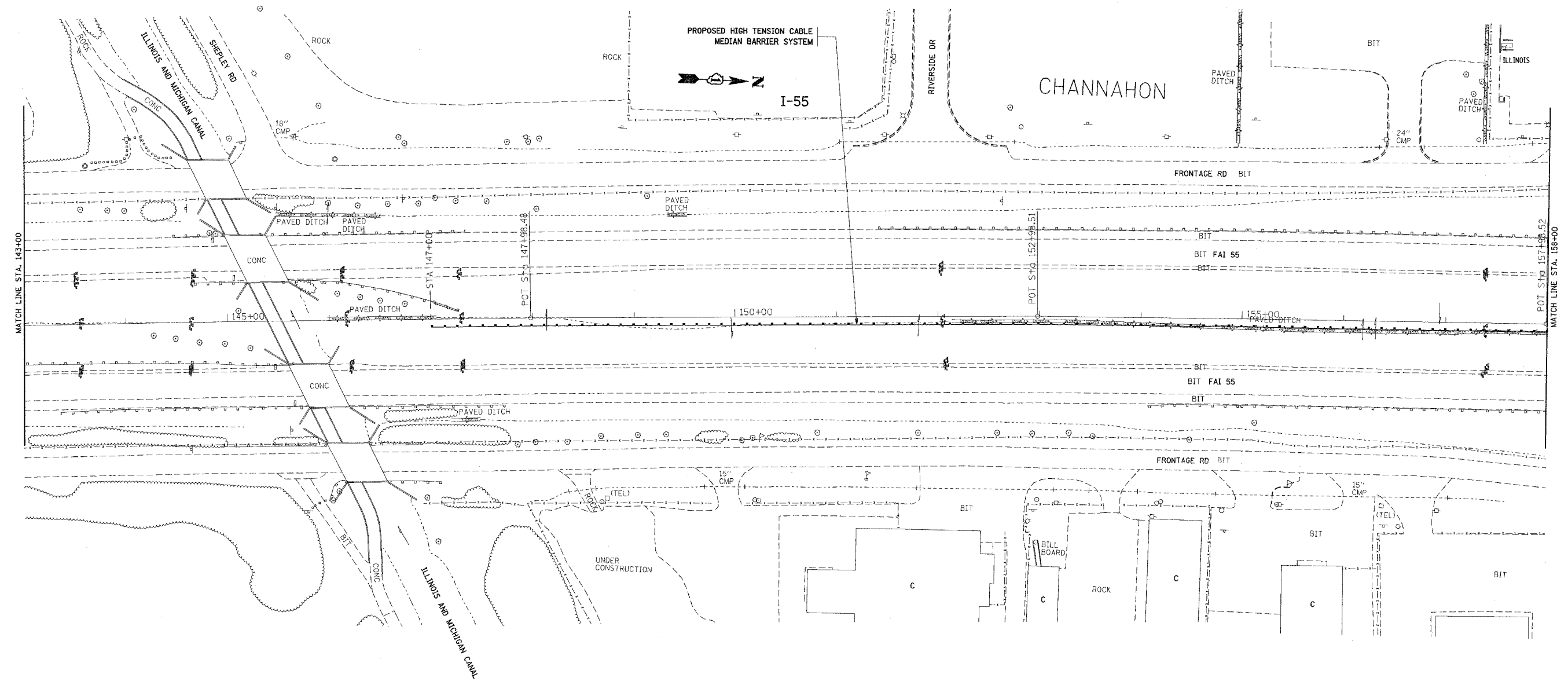
ILLINOIS DEPARTMENT OF TRANSPORTATION  
 FAI 55/ I-55  
 US 6 TO SOUTH OF I-80  
 EXISTING / PROPOSED ROADWAY PLAN

SCALE: VERT. 1"=50'  
 HORIZ. 1"=50'  
 DATE 7/8/2005  
 DRAWN BY: HMO  
 CHECKED BY:

PLT DATE = 7/9/2005  
 FILE NAME = c:\pwworkspace\127295\ah\1-195ec-2.dwg  
 PLT SCALE = 50,000 / IN.  
 USER NAME = omarh



F.A.I. RTE.	SECTION	COUNTY	TOTAL SHEETS	SHEET NO.
55	2005-040 GRR	WILL	14	9
STA. 143+00		TO STA. 158+00		
FED. ROAD DIST. NO.	ILLINOIS	FED. AID PROJECT		



REVISIONS	
NAME	DATE

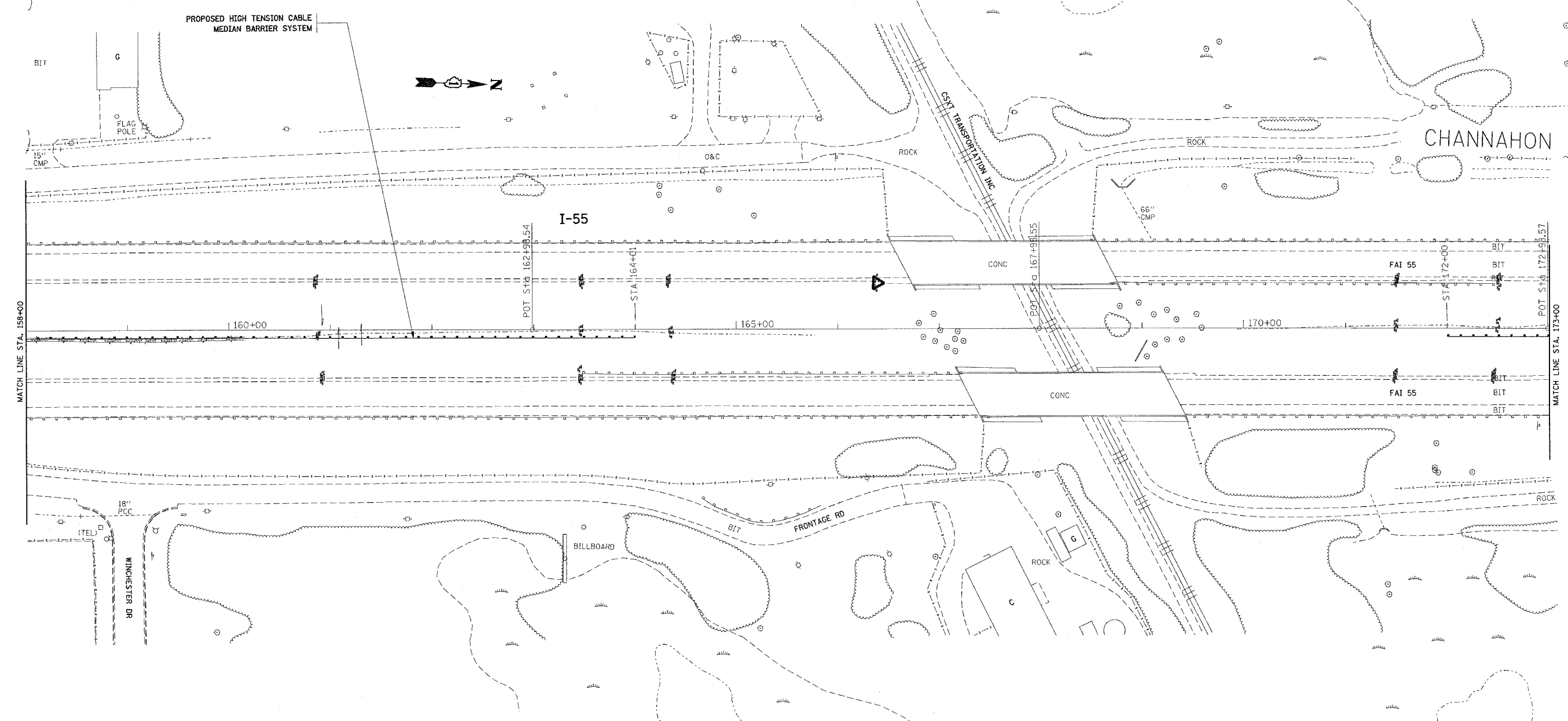
ILLINOIS DEPARTMENT OF TRANSPORTATION  
**FAI 55/ I-55**  
**US 6 TO SOUTH OF I-80**  
**EXISTING / PROPOSED ROADWAY PLAN**

SCALE: VERT. \_\_\_\_\_  
 HORIZ. \_\_\_\_\_  
 DATE \_\_\_\_\_  
 DRAWN BY: HMO  
 CHECKED BY: \_\_\_\_\_

PLOT DATE = 7/18/2005  
 FILE NAME = c:\proje\pca\0127205\whs\1-55sc-2.m32  
 PLOT SCALE = 56.8888 / IN.  
 USER NAME = csmahon

F.A. RTE.	SECTION	COUNTY	TOTAL SHEETS	SHEET NO.
55	2005-040 GRR	WILL	14	10
STA. 158+00		TO STA. 173+00		
FED. ROAD DIST. NO.		ILLINOIS FED. AID PROJECT		

MAINTENANCE



MATCH LINE STA. 158+00

MATCH LINE STA. 173+00

REVISIONS	
NAME	DATE

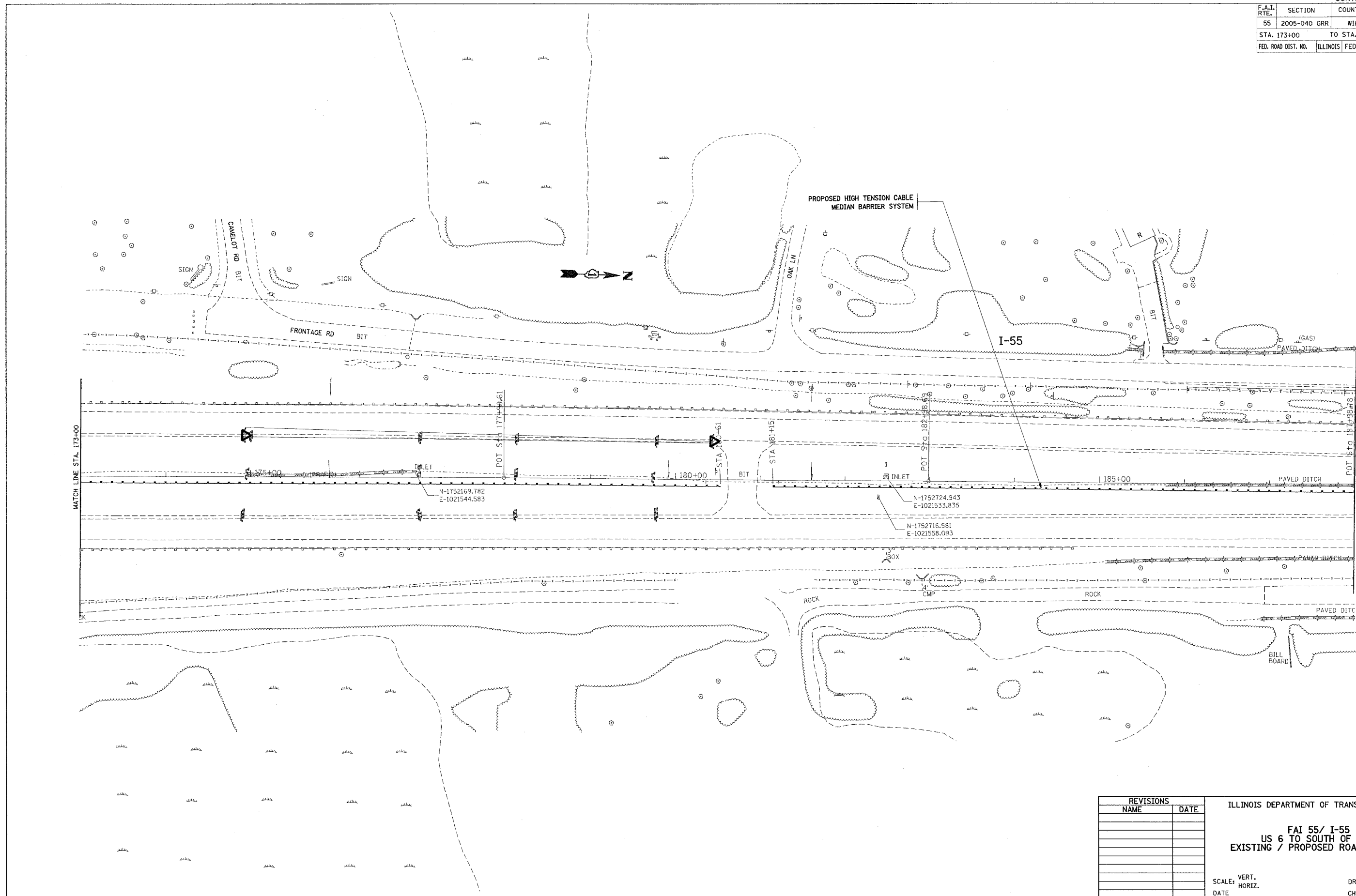
ILLINOIS DEPARTMENT OF TRANSPORTATION

**FAI 55/ I-55**  
**US 6 TO SOUTH OF I-80**  
**EXISTING / PROPOSED ROADWAY PLAN**

SCALE: VERT. 1"=50'  
 HORIZ. 1"=50'  
 DATE 7/8/2005

DRAWN BY: HMO  
 CHECKED BY:

F.A.I. RTE.	SECTION	COUNTY	TOTAL SHEETS	SHEET NO.
55	2005-040 GRR	WILL	14	11
STA. 173+00		TO STA. 188+00		
FED. ROAD DIST. NO.	ILLINOIS	FED. AID PROJECT		



MATCH LINE STA. 173+00

MATCH LINE STA. 188+00

N-1752169.782  
E-1021544.583

N-1752724.943  
E-1021533.835

N-1752716.581  
E-1021558.093

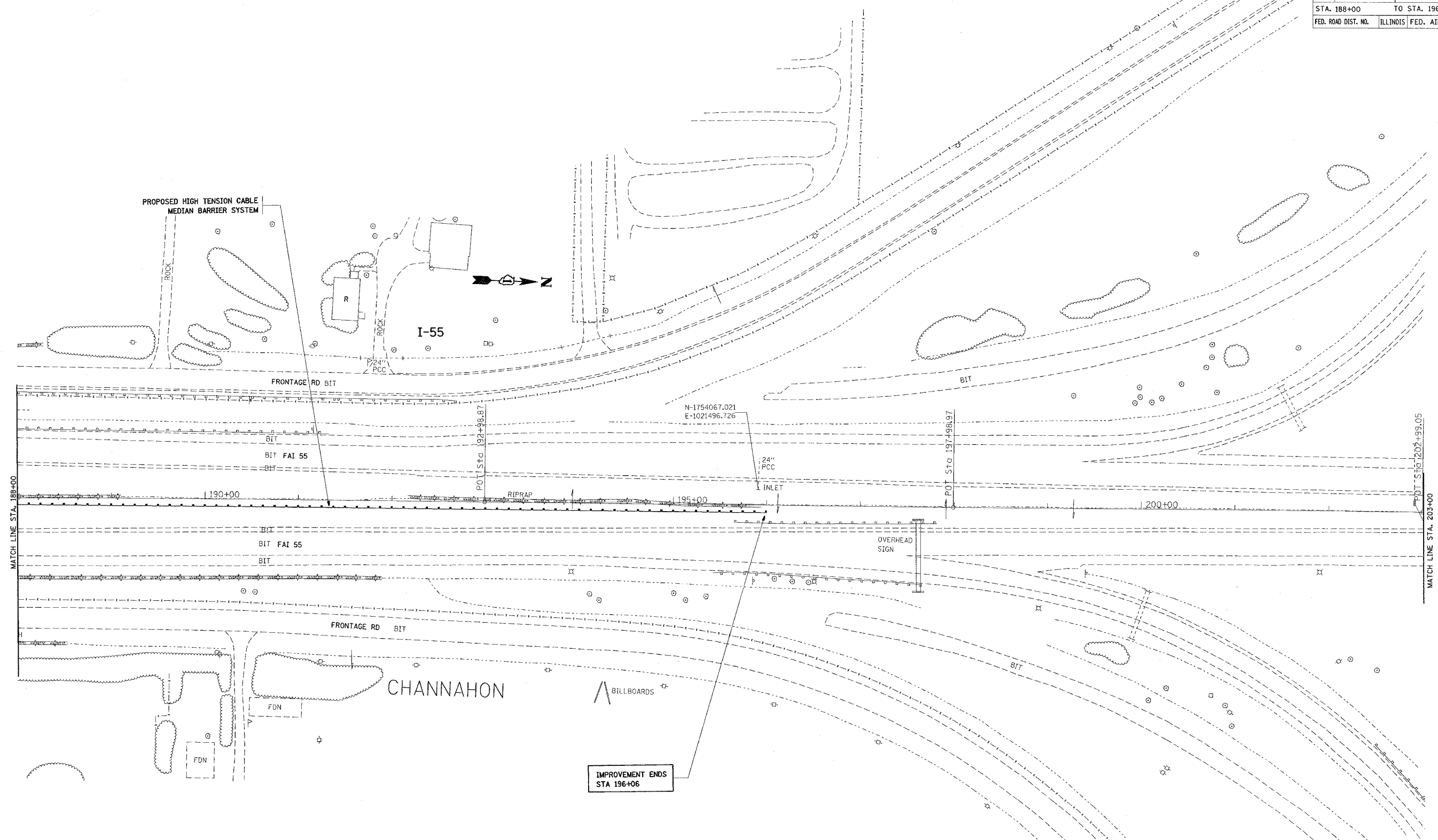
REVISIONS	
NAME	DATE

ILLINOIS DEPARTMENT OF TRANSPORTATION  
  
**FAI 55/ I-55**  
**US 6 TO SOUTH OF I-80**  
**EXISTING / PROPOSED ROADWAY PLAN**

SCALE: VERT. / HORIZ.  
DATE

DRAWN BY: HMO  
CHECKED BY:

F.A.I. RTE.	SECTION	COUNTY	TOTAL SHEETS	SHEET NO.
55	2005-040 GRR	WILL	14	12
STA. 188+00		TO STA. 196+00		
FED. ROAD DIST. NO.	ILLINOIS FED. AID PROJECT			



REVISIONS	
NAME	DATE

ILLINOIS DEPARTMENT OF TRANSPORTATION  
**FAI 55/ I-55**  
**US 6 TO SOUTH OF I-80**  
**EXISTING / PROPOSED ROADWAY PLAN**

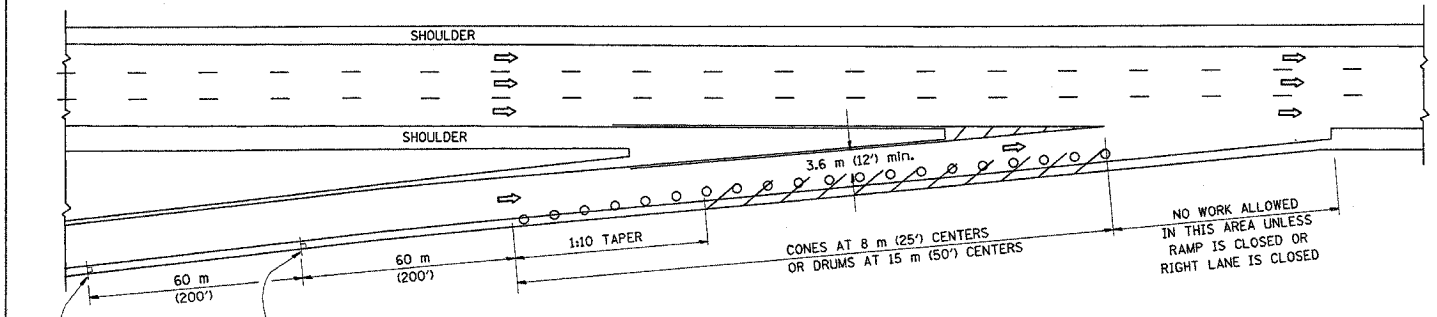
SCALE: VERT. \_\_\_\_\_  
 HORIZ. \_\_\_\_\_  
 DATE \_\_\_\_\_  
 DRAWN BY: HMO  
 CHECKED BY: \_\_\_\_\_



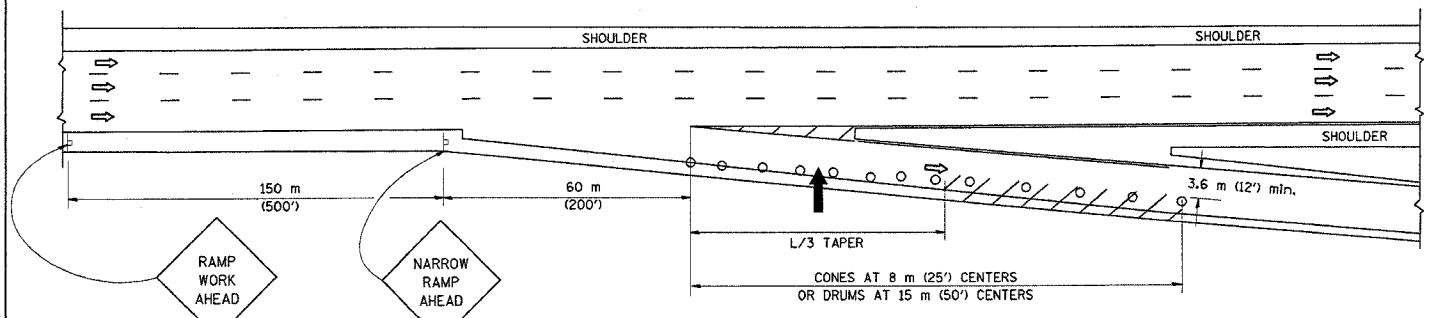
F.A.I. RTE.	SECTION	COUNTY	TOTAL SHEETS	SHEET NO.
55	2005-040 GRR	WILL	14	14
STA.		TO STA.		
FED. ROAD DIST. NO.	ILLINOIS	FED. AID PROJECT		

PARTIAL RAMP CLOSURE DETAILS

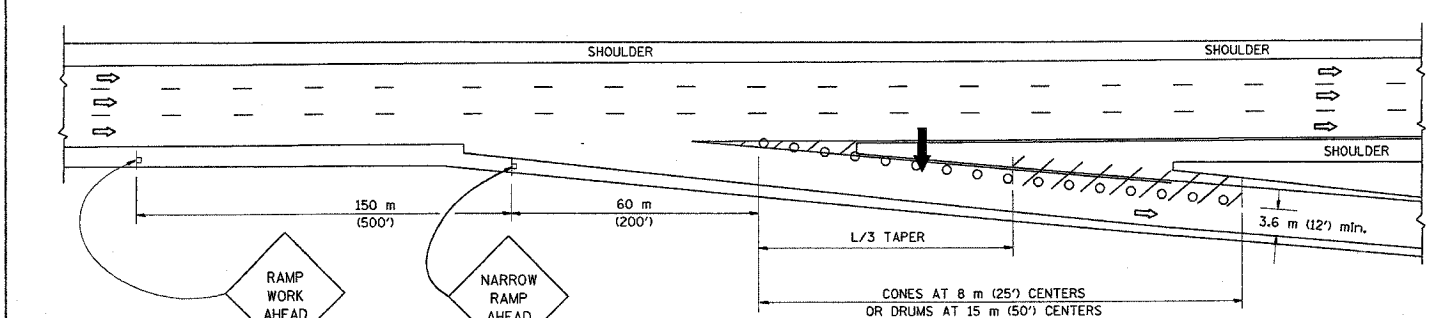
SHOULDER CLOSURE DETAILS



TYPICAL ENTRANCE RAMP



TYPICAL EXIT RAMP



TYPICAL EXIT RAMP

SYMBOLS

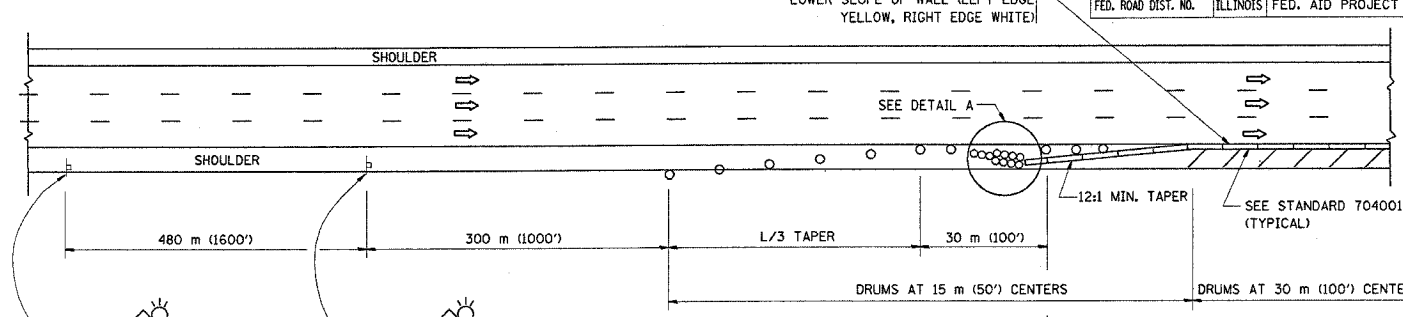
- ARROWBOARD
- WORK AREA
- SIGN ON PORTABLE OR PERMANENT SUPPORT
- FLAGGER WITH CONTROL SIGN
- DRUM WITH MONO-DIRECTIONAL STEADY BURNING LIGHT
- CONES - 700 (28) IN HEIGHT

GENERAL NOTES

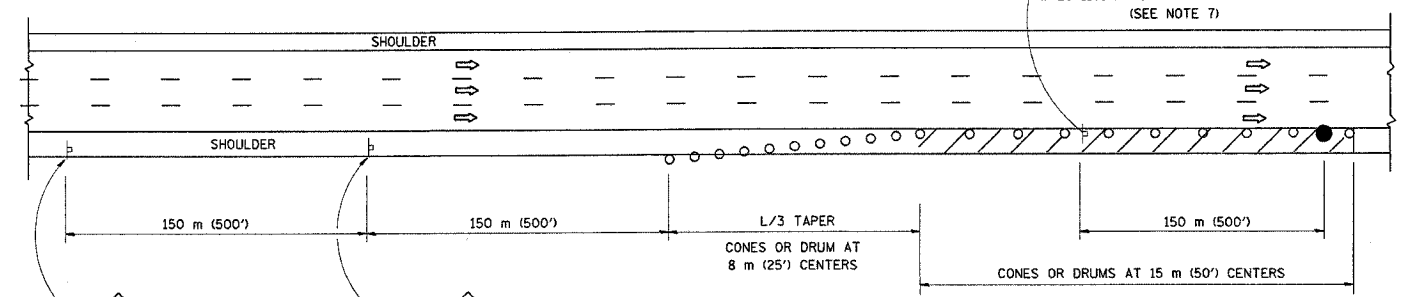
- THE "L" DISTANCE EQUALS:
 

SPEED LIMIT	FORMULAS
80 km/h (45 mph) OR GREATER:	METRIC ENGLISH
	$L=0.65(W)(S)$ $L=(W)(S)$

W = WIDTH OF OFFSET IN METERS (FEET)  
S = NORMAL POSTED SPEED KM/H (MPH)
- PLASTIC DRUMS WITH HIGH PERFORMANCE REFLECTIVE SHEETING AND STEADY BURNING LIGHTS ARE REQUIRED FOR ALL NIGHTTIME CLOSURES.
- ALL SIGNS SHALL BE POST MOUNTED IF THE CLOSURE TIME EXCEEDS FOUR DAYS.
- FLASHING LIGHTS SHALL BE USED DURING THE HOURS OF DARKNESS AND SHALL BE INSTALLED ABOVE THE FIRST TWO SETS OF SIGNS.

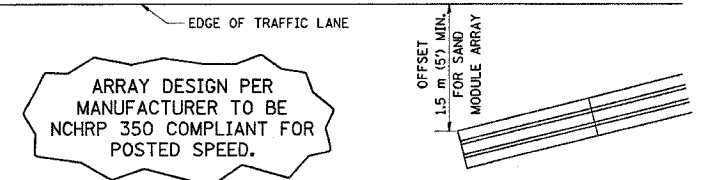


PERMANENT SHOULDER CLOSURE



DAYTIME SHOULDER CLOSURE

- THIS DETAIL IS USED WHERE:
- VEHICLES, EQUIPMENT, WORKERS OR THEIR ACTIVITIES ENCR OACH IN AN AREA CLOSER THAN 4.5 m (15') TO THE EDGE OF PAVEMENT FOR A PERIOD IN EXCESS OF 15 MINUTES.



DETAIL "A"  
IMPACT ATTENUATOR, TEMPORARY  
(SEE NOTE 5)

- THE IMPACT ATTENUATOR, TEMPORARY IS NOT REQUIRED WHEN THE TEMPORARY CONCRETE BARRIER WALL IS OUTSIDE THE CLEAR ZONE OR IS TIED INTO THE EXISTING GUARDRAIL. IF OFFSET IS LESS THAN 5 FEET USE "TRAFFIC BARRIER TERMINAL, TYPE III, TEMPORARY" DEVICE TO MEET NCHRP350 FOR POSTED SPEED.
- AUTHORIZATION FROM THE DISTRICT'S BUREAU OF TRAFFIC IS REQUIRED FOR ALL FREEWAY CLOSURES.
- THE FLAGGER AND FLAGGER SIGN ARE REQUIRED AT THE ABOVE WORK SITES WHEN:
  - FOUR OR MORE WORK VEHICLES ENTER THE TRAFFIC LANES IN A ONE HOUR PERIOD.
  - THE WORK AVTIVITY REQUIRES FREQUENT ENCROACHMENT INTO THE LANE OPEN TO TRAFFIC.
 THE FLAGGER SHALL BE STATIONED APPROXIMATELY 30 m (100') TO 60 m (200') IN ADVANCE OF THE WORKERS.

ALL DIMENSIONS ARE IN MILLIMETERS (INCHES) UNLESS OTHERWISE SHOWN.

ILLINOIS DEPARTMENT OF TRANSPORTATION

TRAFFIC CONTROL DETAILS FOR FREEWAY SHOULDER CLOSURES PARTIAL RAMP CLOSURES

REVISIONS	
NAME	DATE
DWS	11/96
JAF	12/02
NCHRP 350	04/03

SCALE: NONE  
DATE: 6/29/2005  
DRAWN BY: DWS  
DESIGNED BY: DWS  
CHECKED BY: TC-17

REVISION DATE: 04/24/03