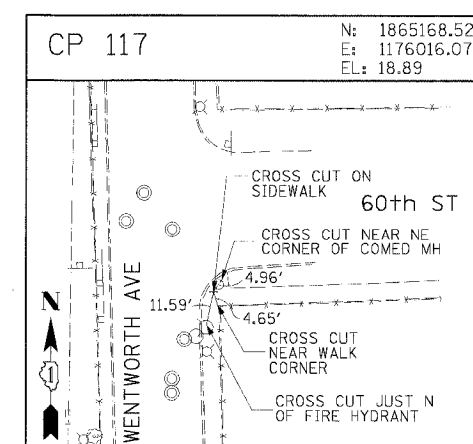
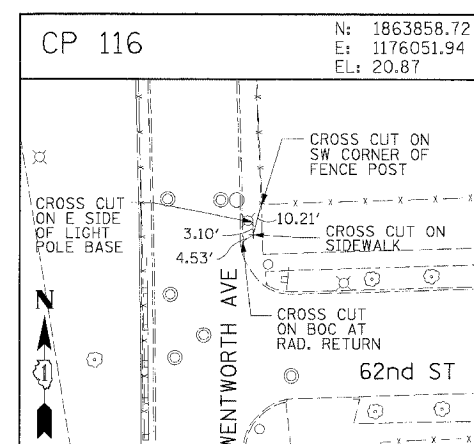
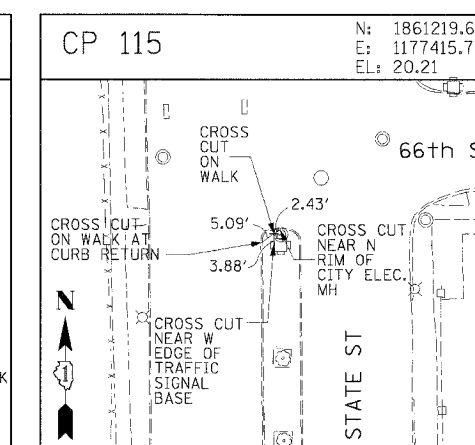
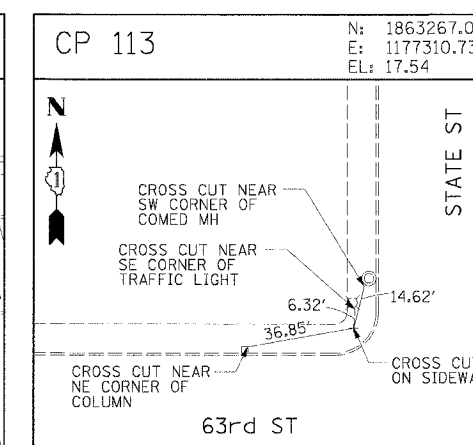
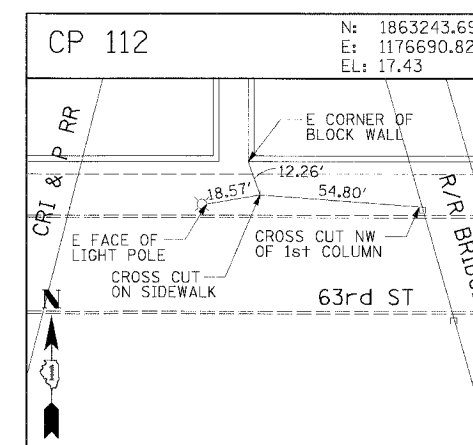
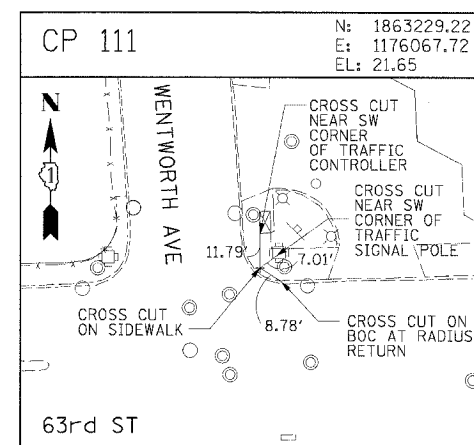
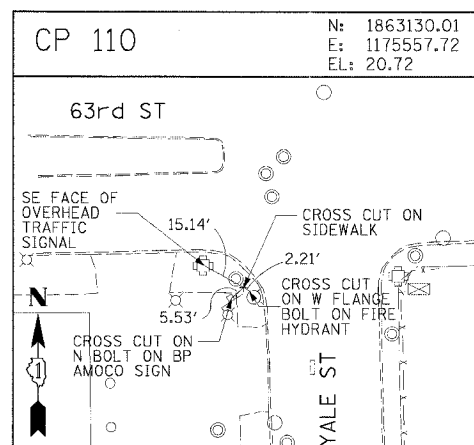
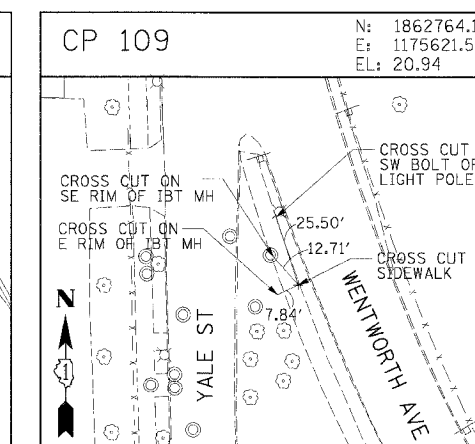
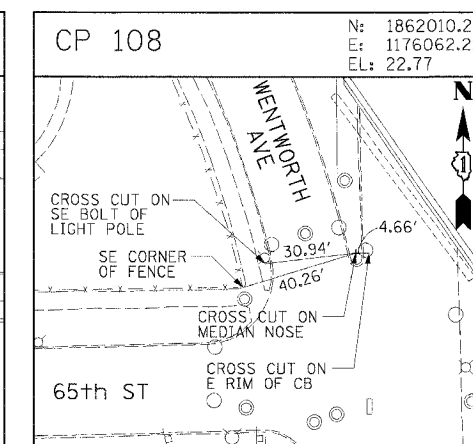
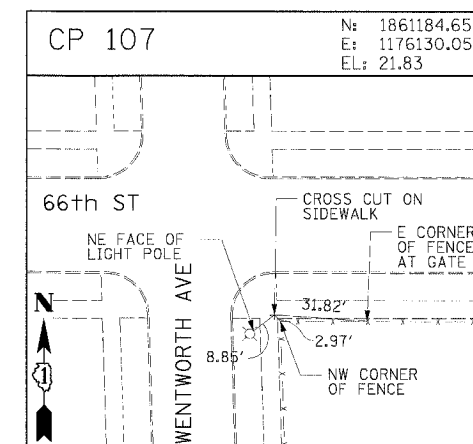
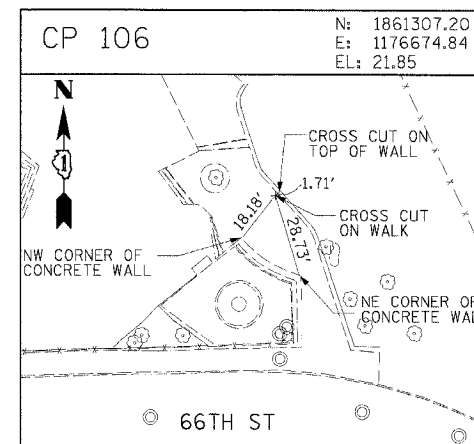
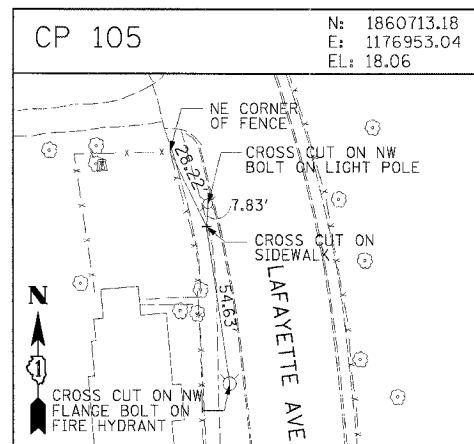
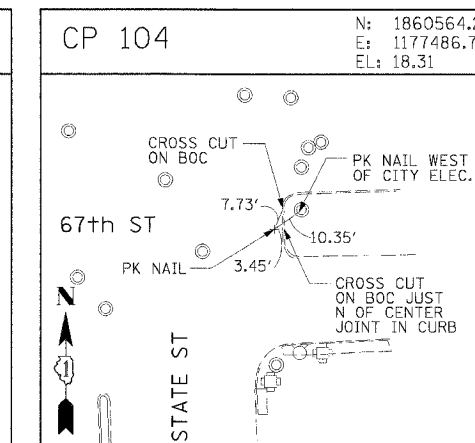
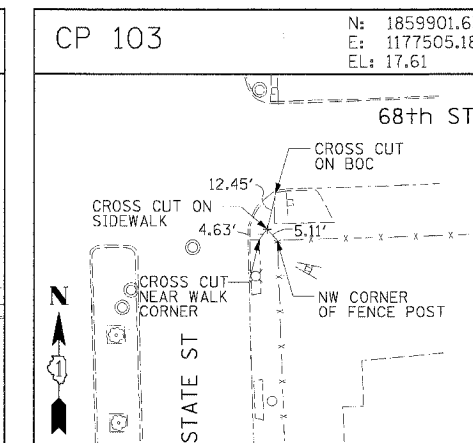
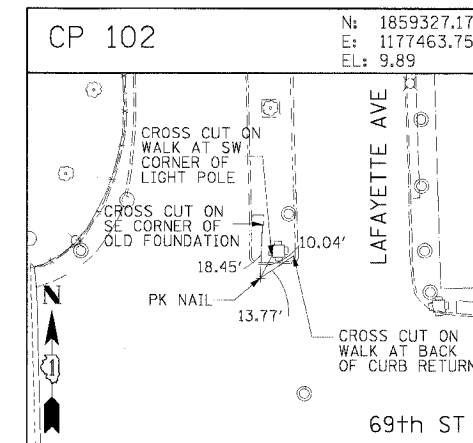
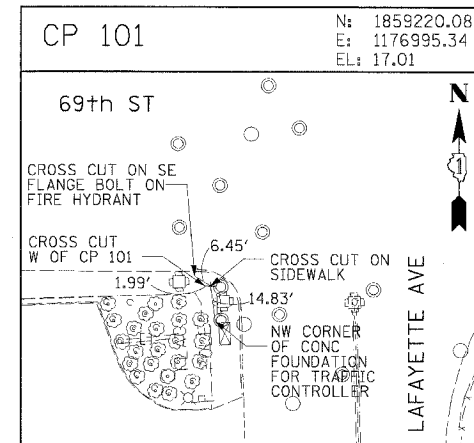
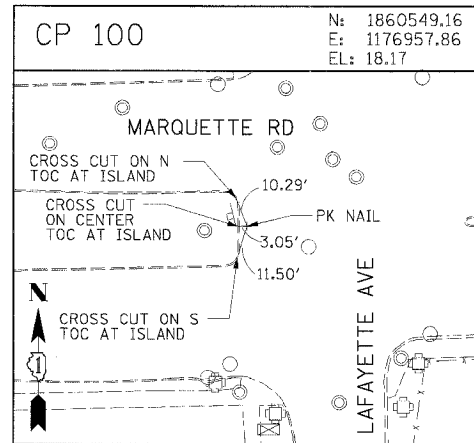


F.A.I. NO.	SECTION	COUNTY	TOTAL SHEETS	SHEET NO.
90/94		COOK	556	38
STA.	TO STA.			
FED. ROAD DIST. NO. 1 ILLINOIS			FED. AID PROJECT	
• (818, ETC. 2324.6-1)PR-8			62300	



CTE | AECOM

REVISIONS	
NAME	DATE

ILLINOIS DEPARTMENT OF TRANSPORTATION
F.A.I. 90/94 (DAN RYAN EXPRESSWAY)
71ST STREET TO 31ST STREET (NB EXPRESS LANES)
SURVEY TIES AND CONTROL POINTS
SCALE: 1"=30'
DATE: 7/7/05
DRAWN BY: MRK
CHECKED BY: JAL

F:\GIS\90935\90935.dwg 14875\CAD\90935\14875.dwg 10/18/05 10:48:31 AM