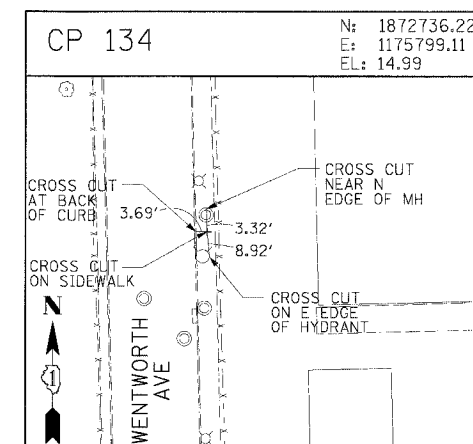
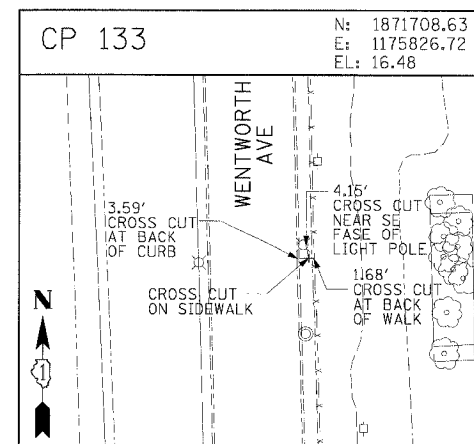
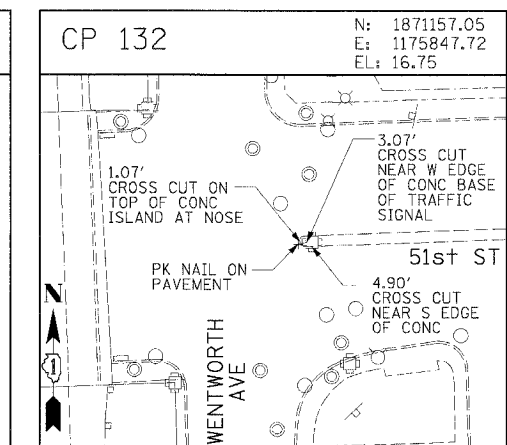
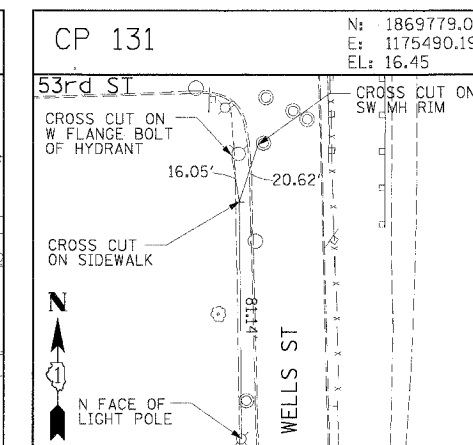
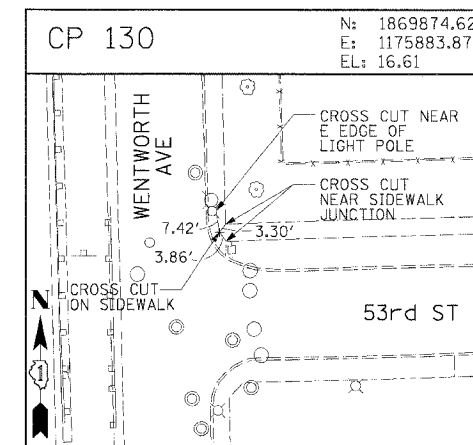
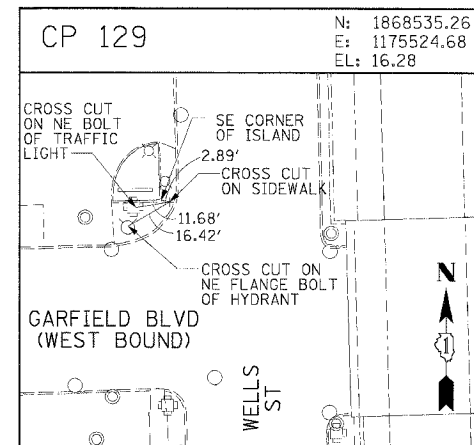
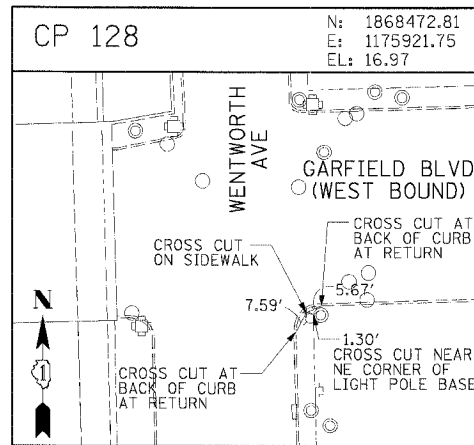
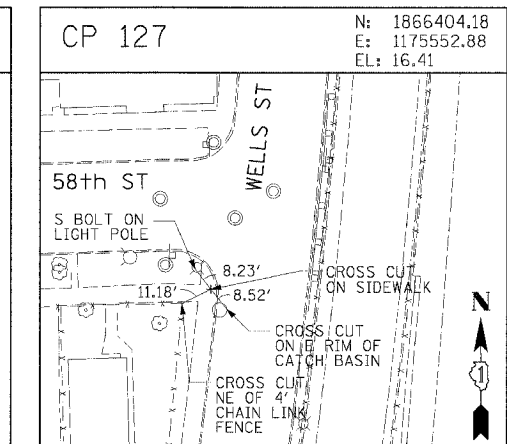
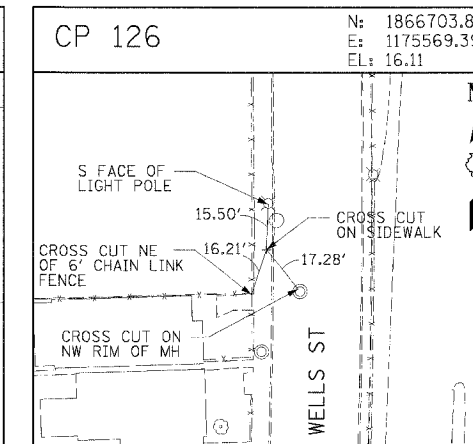
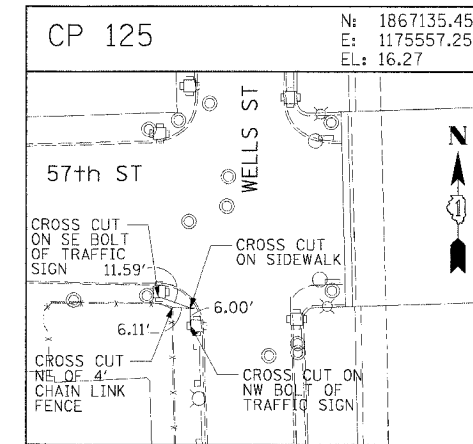
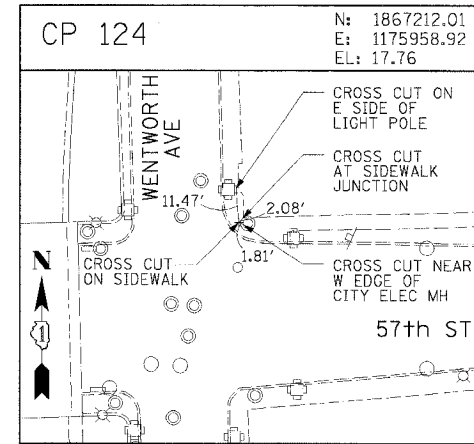
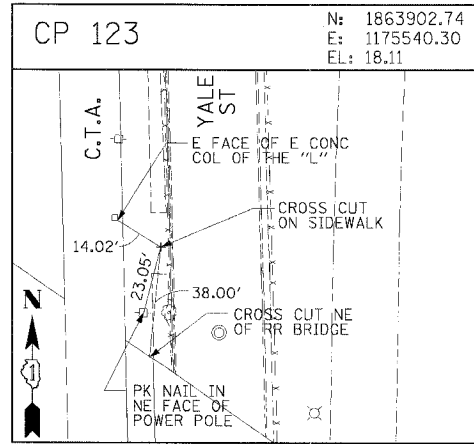
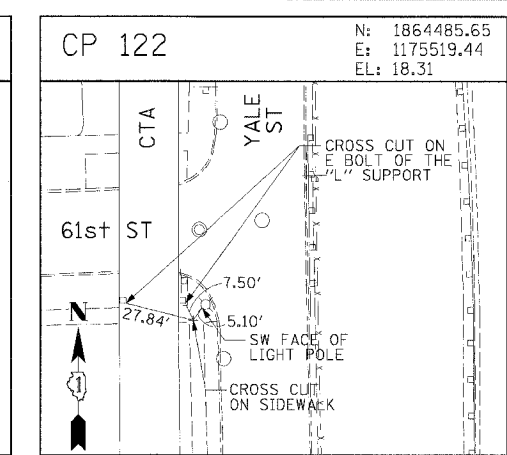
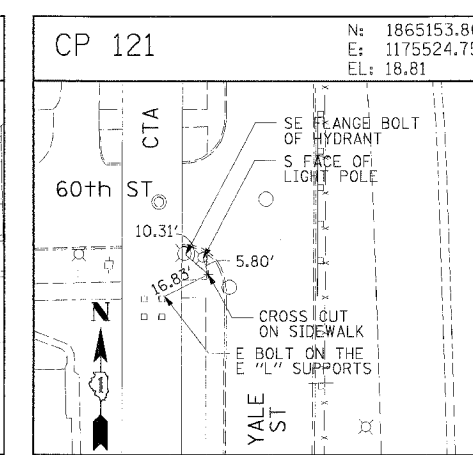
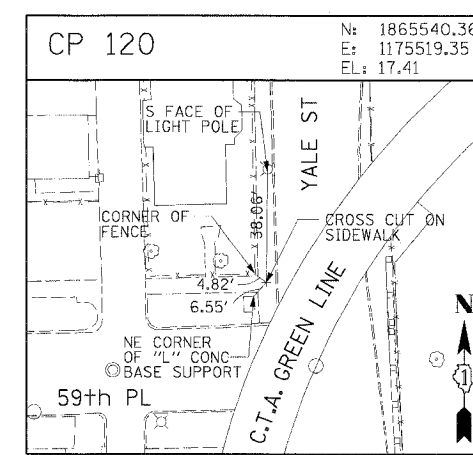
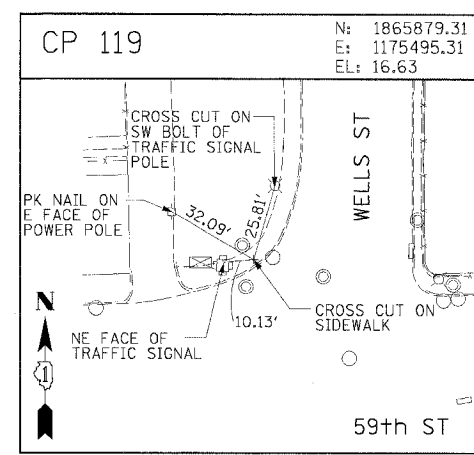
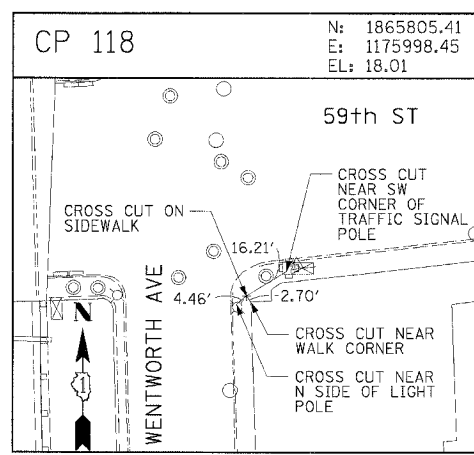


F.A.I. RTE.	SECTION	COUNTY	TOTAL SHEETS	SHEET NO.
90/94	*	COOK	556	39
STA.		TO STA.		
FED. ROAD DIST. NO. 1		ILLINOIS	FED. AID PROJECT	
* (1818, ETC, 2324.6-1P/R-8		62300		



CTE | AECOM

REVISIONS	
NAME	DATE

ILLINOIS DEPARTMENT OF TRANSPORTATION
F.A.I. 90/94 (DAN RYAN EXPRESSWAY)
71ST STREET TO 31ST STREET (NB EXPRESS LANES)
SURVEY TIES AND CONTROL POINTS

SCALE: 1"=30'
DATE: 7/7/05
DRAWN BY: MRK
CHECKED BY: JAL

06/24/2005 10:48:15 AM