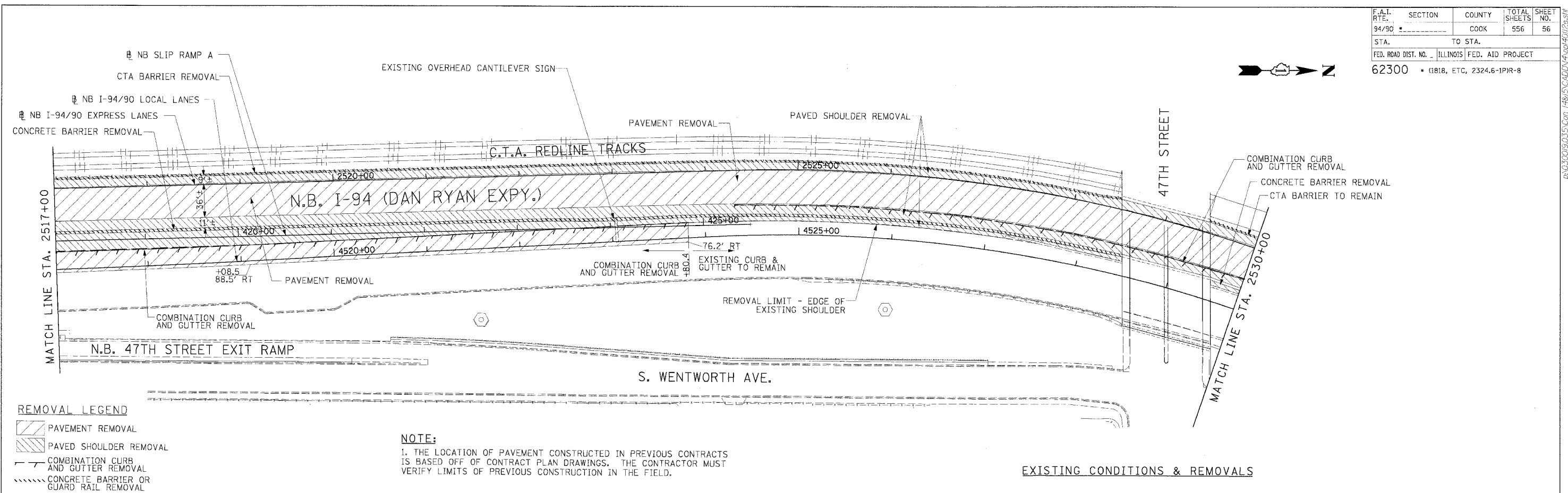


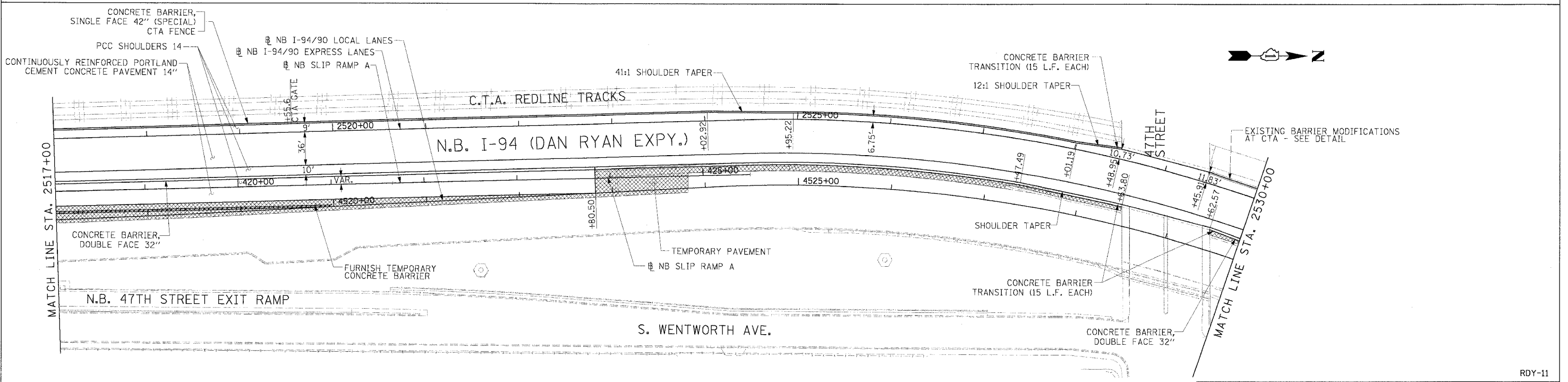
F.A.I. SECTION	COUNTY	TOTAL SHEETS	SHEET NO.
94/90	COOK	556	56
STA.	TO STA.		
FED. ROAD DIST. NO.	ILLINOIS	FED. AID PROJECT	
62300	1818, ETC, 2324.6-1PR-8		



REMOVAL LEGEND

	PAVEMENT REMOVAL
	PAVED SHOULDER REMOVAL
	COMBINATION CURB AND GUTTER REMOVAL
	CONCRETE BARRIER OR GUARD RAIL REMOVAL

NOTE:
 1. THE LOCATION OF PAVEMENT CONSTRUCTED IN PREVIOUS CONTRACTS IS BASED OFF OF CONTRACT PLAN DRAWINGS. THE CONTRACTOR MUST VERIFY LIMITS OF PREVIOUS CONSTRUCTION IN THE FIELD.



LEGEND

	TEMPORARY PAVEMENT (INTERSTATE)/TEMPORARY SHOULDER
	TEMPORARY CONCRETE BARRIER

STATIONING

+++## STATION PROVIDED FROM THE I-90/94 EXPRESS LANES

(+##,##) STATION PROVIDED FROM THE I-90/94 LOCAL LANES

[+##,##] STATION PROVIDED FROM THE SLIP RAMP

NOTE:
 1. BRIDGE OVER EXPRESS LANES OMITTED FOR CLARITY.

Edwards AND Kelcey

ONE NORTH FRANKLIN
 CHICAGO, IL 60606
 PHONE: (312) 251-3000
 FAX: (312) 251-3015
 WEB: WWW.EKCORP.COM

REVISIONS	
NAME	DATE

ILLINOIS DEPARTMENT OF TRANSPORTATION

F.A.I. 94/90 (DAN RYAN EXPRESSWAY)
 31ST STREET TO 71ST STREET
 NB EXPRESS LANE RECONSTRUCTION
 EXISTING AND PROPOSED PLAN
 NORTHBOUND STA. 2517+00 TO STA. 2530+00

SCALE: 1"=50'
 0" 50' 100'

DATE: 7/1/05

DRAWN BY: TAI
 CHECKED BY: PJM

RDY-11

06/24/2005 11:04:58 AM