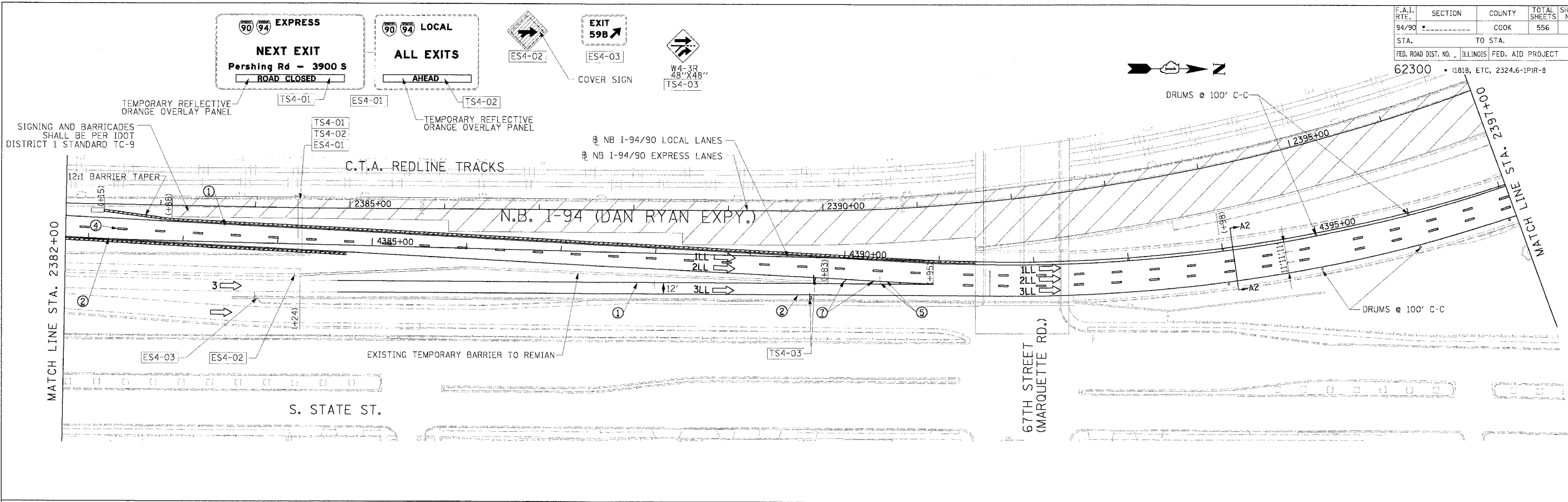
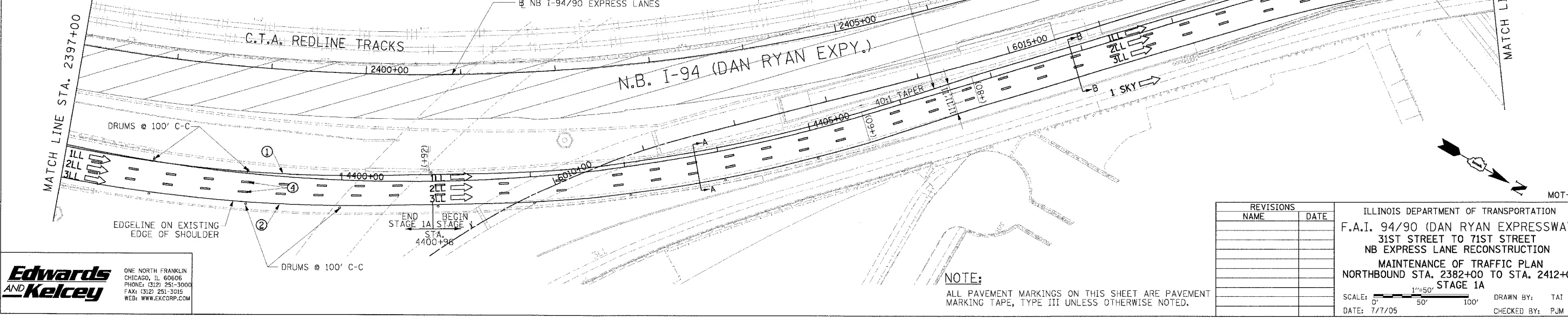


F.A.I. RTE.	SECTION	COUNTY	TOTAL SHEETS	SHEET NO.
94/90		COOK	556	85
STA.	TO STA.		FED. ROAD DIST. NO. ILLINOIS FED. AID PROJECT	
62300	(1818, ETC, 2324.6-1P1R-8			



- LEGEND**
- WORK ZONE
 - TEMPORARY PAVEMENT
 - TRAFFIC LANE & DIRECTION OF TRAFFIC
 - DRUM OR BARRICADE TYPE II WITH STEADY BURN LIGHT
 - IMPACT ATTENUATORS, TEMPORARY (NON-REDIRECTIVE), TEST LEVEL 3
 - BARRICADE TYPE III
 - TEMPORARY CONCRETE BARRIER
 - EXISTING SIGN (ESx-xx)
 - TEMPORARY SIGN (TSx-xx)
 - LINE 4" (YELLOW EDGE LINE)
 - LINE 4" (WHITE EDGE LINE)
 - LINE 4" (SKIP DASH, 6' SKIP - 2' DASH, WHITE)
 - LINE 5" (SKIP DASH, 30' SKIP - 10' DASH, WHITE)
 - LINE 8" (WHITE GORE LINE)
 - LINE 8" (SKIP DASH, 12' SKIP - 3' DASH, WHITE)
 - LINE 12" (DIAGONAL, 30' C-C)
 - LINE 12" (DIAGONAL, 500' C-C)
 - LETTERS AND SYMBOLS

- STATIONING**
- +** STATION PROVIDED FROM THE NB I-90/94 EXPRESS LANES
 - (+**) STATION PROVIDED FROM THE NB I-90/94 LOCAL LANES



Edwards AND Kelcey
 ONE NORTH FRANKLIN
 CHICAGO, IL 60606
 PHONE: (312) 251-3000
 FAX: (312) 251-3015
 WEB: WWW.EKCORP.COM

REVISIONS	
NAME	DATE

ILLINOIS DEPARTMENT OF TRANSPORTATION
 F.A.I. 94/90 (DAN RYAN EXPRESSWAY)
 31ST STREET TO 71ST STREET
 NB EXPRESS LANE RECONSTRUCTION
 MAINTENANCE OF TRAFFIC PLAN
 NORTHBOUND STA. 2382+00 TO STA. 2412+00
 STAGE 1A
 SCALE: 1"=50'
 DATE: 7/7/05
 DRAWN BY: TAT
 CHECKED BY: PJM

NOTE:
 ALL PAVEMENT MARKINGS ON THIS SHEET ARE PAVEMENT MARKING TAPE, TYPE III UNLESS OTHERWISE NOTED.

P:\03\0090\035\Com_P48\5\CAD\DWG\140222.dwg
 06/24/2005 12:29:23 PM