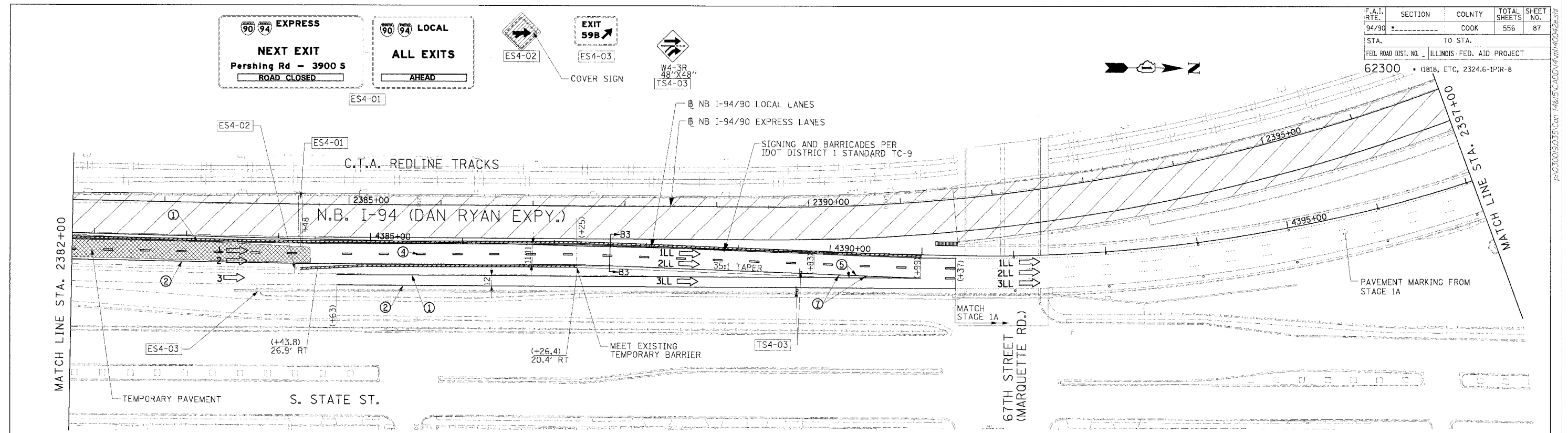
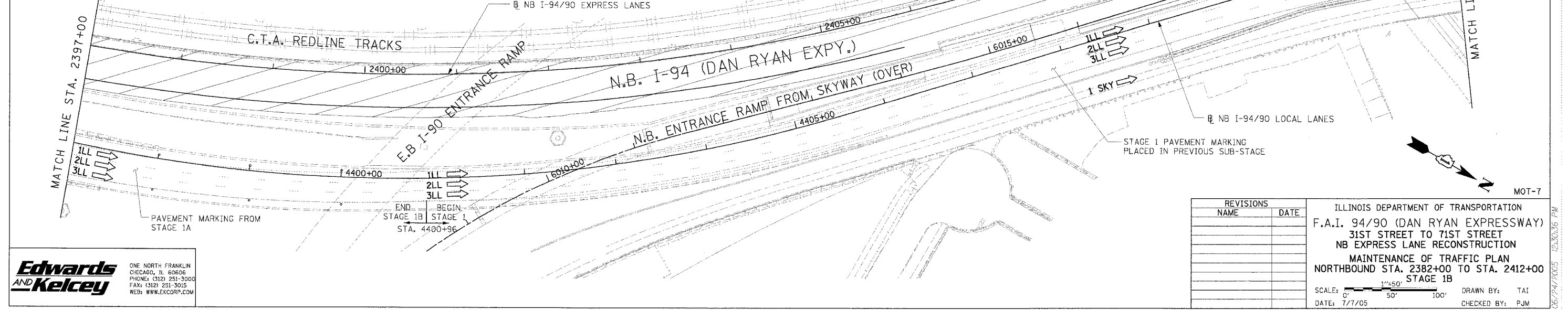


F.A.I. R.T.E.	SECTION	COUNTY	TOTAL SHEETS	SHEET NO.
94/90		COOK	556	87
STA.	TO STA.			
FED. ROAD DIST. NO.	ILLINOIS FED. AID PROJECT			
62300	(181B, ETC., 2324.6-1PJR-8			



**NOTE:**  
ALL PAVEMENT MARKINGS ON THIS SHEET ARE PAVEMENT MARKING TAPE, TYPE III UNLESS OTHERWISE NOTED.

<b>LEGEND</b>		<b>STATIONING</b>	
	WORK ZONE	①	LINE 4" (YELLOW EDGE LINE)
	TEMPORARY PAVEMENT	②	LINE 4" (WHITE EDGE LINE)
	TRAFFIC LANE & DIRECTION OF TRAFFIC	③	LINE 4" (SKIP DASH, 6' SKIP - 2' DASH, WHITE)
	DRUM OR BARRICADE TYPE II WITH STEADY BURN LIGHT	④	LINE 5" (SKIP DASH, 30' SKIP - 10' DASH, WHITE)
	IMPACT ATTENUATORS, TEMPORARY (NON-REDIRECTIVE), TEST LEVEL 3	⑤	LINE 8" (WHITE GORE LINE)
	BARRICADE TYPE III	⑥	LINE 8" (SKIP DASH, 12' SKIP - 3' DASH, WHITE)
	TEMPORARY CONCRETE BARRIER	⑦	LINE 12" (DIAGONAL, 30' C-C)
	EXISTING SIGN	⑧	LINE 12" (DIAGONAL, 500' C-C)
	TEMPORARY SIGN	⑨	LETTERS AND SYMBOLS



**Edwards AND Kelcey**  
ONE NORTH FRANKLIN  
CHICAGO, IL 60606  
PHONE: (312) 251-3000  
FAX: (312) 251-3015  
WEB: WWW.EDKORP.COM

REVISIONS	
NAME	DATE

ILLINOIS DEPARTMENT OF TRANSPORTATION  
F.A.I. 94/90 (DAN RYAN EXPRESSWAY)  
31ST STREET TO 71ST STREET  
NB EXPRESS LANE RECONSTRUCTION  
MAINTENANCE OF TRAFFIC PLAN  
NORTHBOUND STA. 2382+00 TO STA. 2412+00  
STAGE 1B  
SCALE: 1"=50'  
DATE: 7/7/05  
DRAWN BY: TAI  
CHECKED BY: PJM

06/24/2005 12:30:36 PM