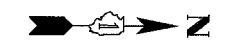
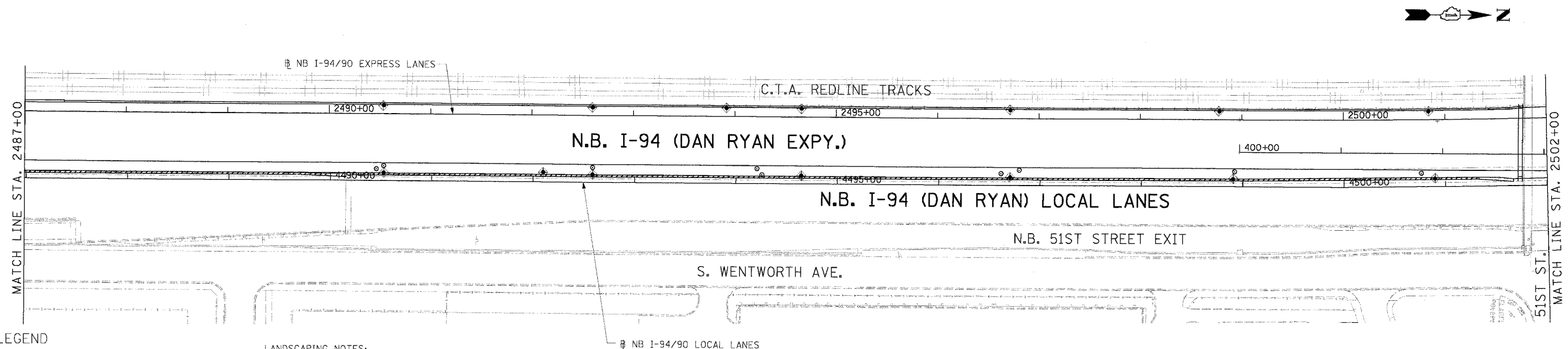
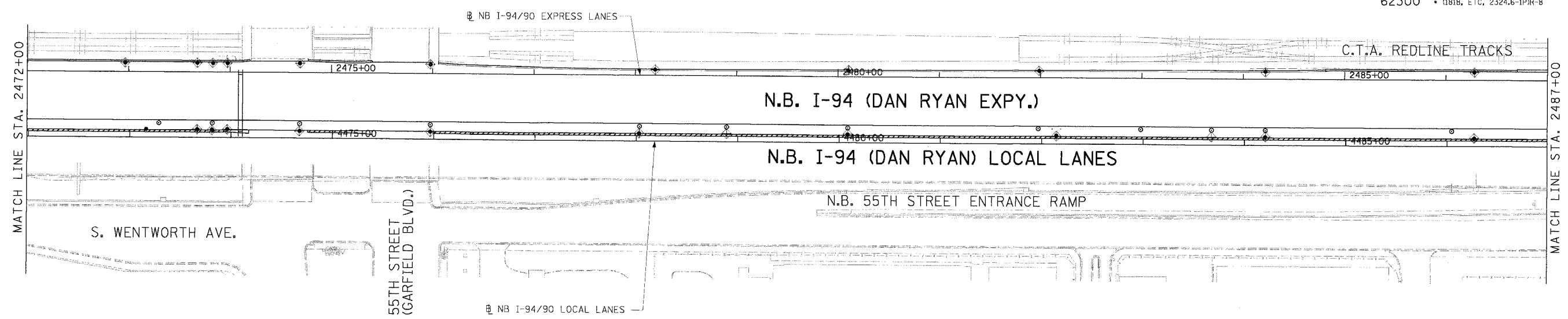

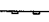
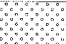
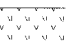


F.A.I. RTE.	SECTION	COUNTY	TOTAL SHEETS	SHEET NO.
94/90		COOK	556	113
STA.	TO STA.		FED. ROAD DIST. NO.	
62300	1818, ETC, 2324.6-IPR-8		ILLINOIS FED. AID PROJECT	



**LEGEND**

-  INLET FILTER
-  PERIMETER EROSION BARRIER
-  SEEDING, CLASS 2A  
TOPSOIL FURNISH AND PLACE, 4"  
EROSION CONTROL BLANKET
-  SEEDING, CLASS 2A  
TOPSOIL FURNISH AND PLACE, 8"  
COMPOST FURNISH AND PLACE, 4"  
MULCH, METHOD 2  
EROSION CONTROL BLANKET

**LANDSCAPING NOTES:**

1. THE SEEDING DATES FOR BARE EARTH SEEDING OF MIXTURE CLASS 2A SHALL BE FROM APRIL 1 TO JUNE 1 AND FROM AUGUST 15 TO SEPTEMBER 30. ALL SEEDING NOT SOWN ACCORDING TO THE SPECIFIED SEASONAL DATE SHALL REQUIRE PRIOR WRITTEN APPROVAL FROM THE ENGINEER. FAILURE TO SECURE SUCH APPROVAL SHALL RESULT IN REJECTION OF SEEDING AND REPLACEMENT BY THE CONTRACTOR AT HIS/HER EXPENSE.
2. THE CONTRACTOR SHALL USE CARE IN GRADING OR EXCAVATING NEAR ANY AND ALL EXISTING ITEMS WHICH WILL NOT BE REMOVED. ANY DAMAGE DONE TO EXISTING ITEMS BY THE CONTRACTOR SHALL BE REPAIRED BY THE CONTRACTOR AT THE CONTRACTOR'S EXPENSE.
3. THE CONTRACTOR SHALL TAKE ALL NECESSARY PRECAUTIONS FOR THE PROTECTION OF EXISTING PLANT MATERIAL FOR WHICH THE CONTRACT DOES NOT PROVIDE REMOVAL. THE PROTECTION OF THE EXISTING PLANT MATERIAL AND THE REPAIR OR REPLACEMENT OF THE EXISTING PLANT MATERIAL OF EXISTING PLANT MATERIAL DAMAGED BY THE CONTRACTOR SHALL BE DONE IN ACCORDANCE WITH THE REQUIREMENTS OF SECTION 201 OF THE STANDARD SPECIFICATIONS.

**EROSION CONTROL NOTES:**

1. EROSION CONTROL ITEMS ARE CONSIDERED TO BE A HIGH PRIORITY ON THIS CONTRACT. THE ENGINEER WILL IMPLEMENT ALL PROVISIONS OF THE SPECIFICATION NECESSARY TO ASSURE THAT EROSION CONTROL ITEMS ARE CONSTRUCTED AND MAINTAINED IN A TIMELY WAY. ALL EROSION CONTROL MEASURES SHALL BE INSTALLED PRIOR TO BEGINNING ANY CONSTRUCTION ACTIVITIES, WHICH MAY POTENTIALLY CREATE CONDITIONS THAT ARE LIKELY TO ERODE.
2. THE EROSION CONTROL MEASURES SHOWN ARE BUT A GRAPHICAL REPRESENTATION OF SUGGESTED MEASURES. DEVIATIONS FROM THIS PLAN ARE EXPECTED PENDING A JOBSITE INSPECTION BETWEEN THE CONTRACTOR AND THE DEPARTMENT.
3. THE CONTRACTOR WILL BE REQUIRED TO IMPLEMENT AND MAINTAIN SEDIMENT CONTROL MEASURES PRIOR TO STRIPPING EXISTING VEGETATION.

**Edwards AND Kelcey**  
 ONE NORTH FRANKLIN  
 CHICAGO, IL 60606  
 PHONE: (312) 251-3000  
 FAX: (312) 251-3015  
 WEB: WWW.EKCORP.COM

REVISIONS	
NAME	DATE

ILLINOIS DEPARTMENT OF TRANSPORTATION  
 F.A.I. 94/90 (DAN RYAN EXPRESSWAY)  
 31ST STREET TO 71ST STREET  
 NB EXPRESS LANE RECONSTRUCTION  
 EROSION CONTROL  
 AND LANDSCAPING PLAN  
 NORTHBOUND STA. 2472+00 TO STA. 2502+00  
 SCALE: 1"=50'  
 DATE: 7/7/05  
 DRAWN BY: TAI  
 CHECKED BY: PJM

ERO-5  
 06/27/2005 07:31:51 PM