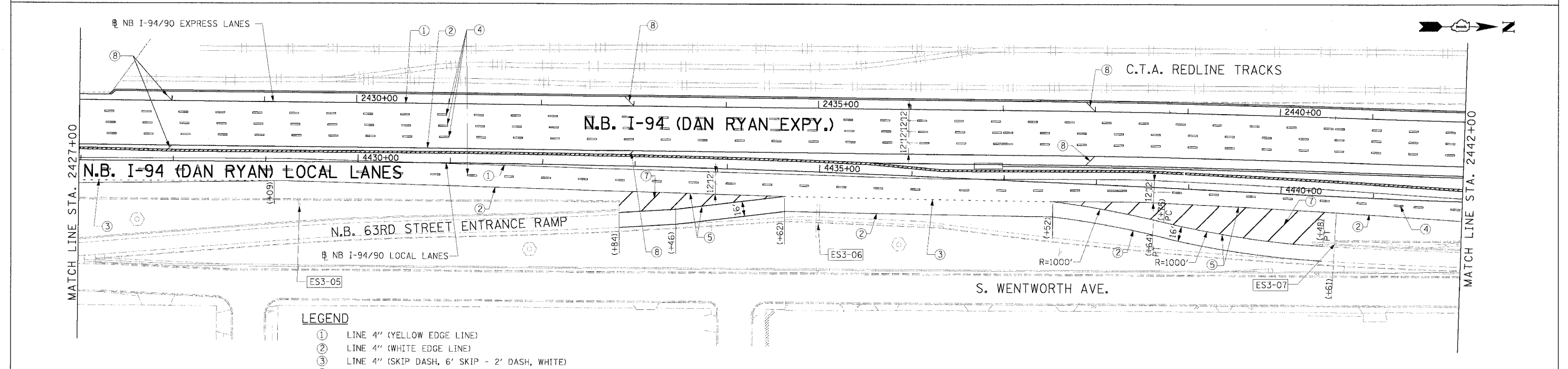
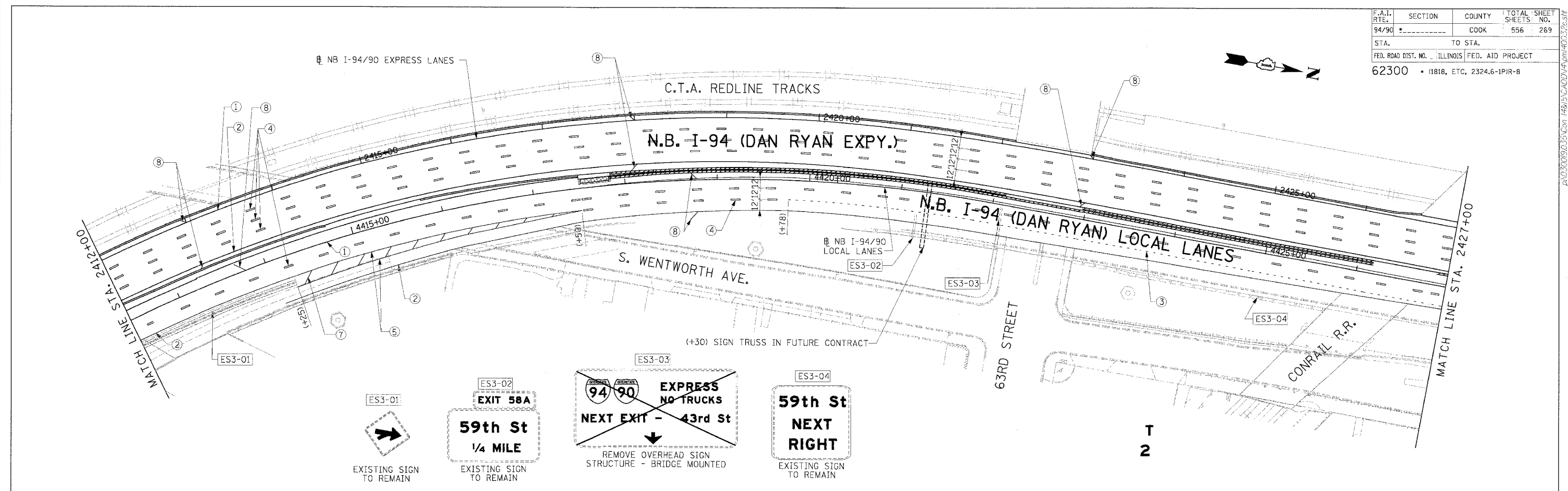
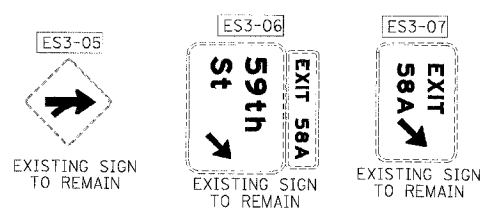


F.A.I. RTE.	SECTION	COUNTY	TOTAL SHEETS	SHEET NO.
94/90		COOK	556	269
STA.	TO STA.			
FED. ROAD DIST. NO.	ILLINOIS	FED. AID PROJECT		
62300	(1818, ETC, 2324.6-1PIR-8			



- LEGEND**
- ① LINE 4" (YELLOW EDGE LINE)
 - ② LINE 4" (WHITE EDGE LINE)
 - ③ LINE 4" (SKIP DASH, 6' SKIP - 2' DASH, WHITE)
 - ④ LINE 5" (SKIP DASH, 30' SKIP - 10' DASH, WHITE)
 - ⑤ LINE 8" (WHITE GORE LINE)
 - ⑥ LINE 8" (SKIP DASH, 12' SKIP - 3' DASH, WHITE)
 - ⑦ LINE 12" (DIAGONAL, 30' C-C)
 - ⑧ LINE 12" (DIAGONAL, 500' C-C)
 - ⑨ LETTERS AND SYMBOLS
- ESx-xx EXISTING SIGN
 TSx-xx TEMPORARY SIGN
 PSx-xx PROPOSED SIGN



STATIONING

+++ STATION PROVIDED FROM THE I-90/94 EXPRESS LANES

(+**) STATION PROVIDED FROM THE I-90/94 LOCAL LANES

NOTE:

ALL PAVEMENT MARKINGS ON THIS SHEET ARE EPOXY PAVEMENT MARKING UNLESS OTHERWISE NOTED.

REVISIONS	
NAME	DATE

ILLINOIS DEPARTMENT OF TRANSPORTATION
 F.A.I. 94/90 (DAN RYAN EXPRESSWAY)
 31ST STREET TO 71ST STREET
 NB EXPRESS LANE RECONSTRUCTION
 PROPOSED PAVEMENT MARKING
 AND SIGNING PLAN
 NORTHBOUND STA. 2412+00 TO STA. 2442+00

SCALE: 1"=50'
 DATE: 7/7/05

DRAWN BY: TAI
 CHECKED BY: PJM

Edwards AND Kelcey
 ONE NORTH FRANKLIN
 CHICAGO, IL 60606
 PHONE: (312) 251-3000
 FAX: (312) 251-3015
 WEB: WWW.EDKCORP.COM

PMK-3
 06/24/2005 12:56:55 PM