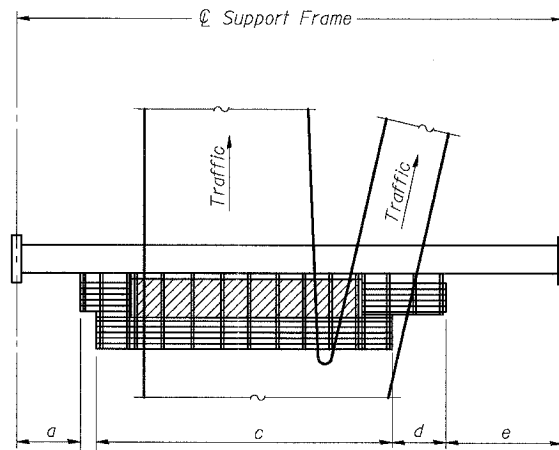


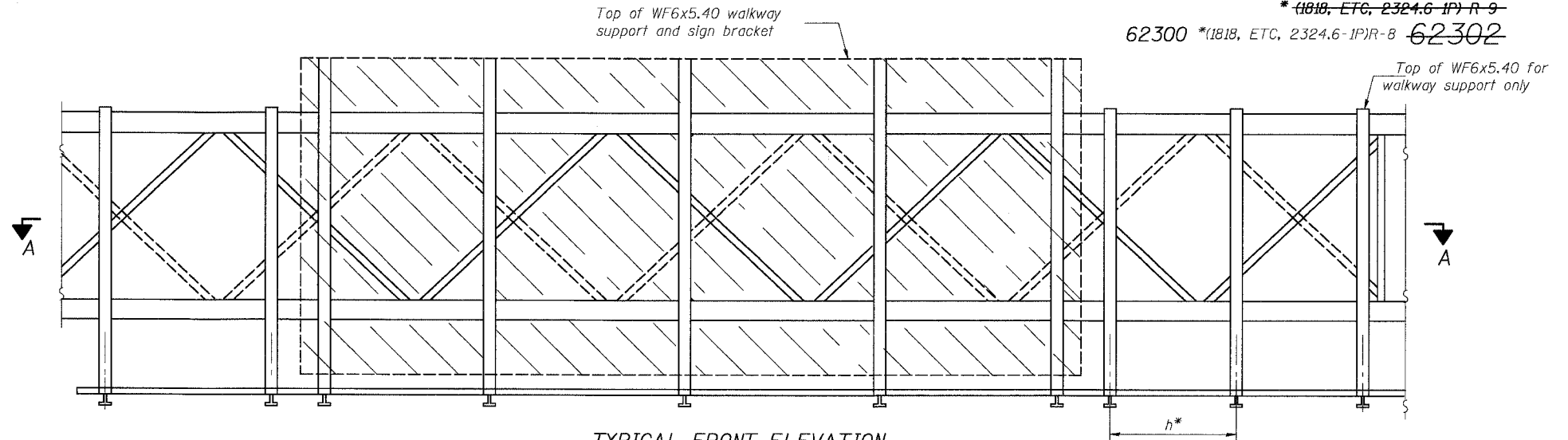
STATE OF ILLINOIS
DEPARTMENT OF TRANSPORTATION

| | | | | | |
|-----------------------|----------|------------------|--------------|-----------|-----------|
| ROUTE NO. | SECTION | COUNTY | TOTAL SHEETS | SHEET NO. | SHEET NO. |
| 90/94 | * | COOK | | 294 | |
| FED. ROAD DIST. NO. 7 | ILLINOIS | FED. AID PROJECT | | | |

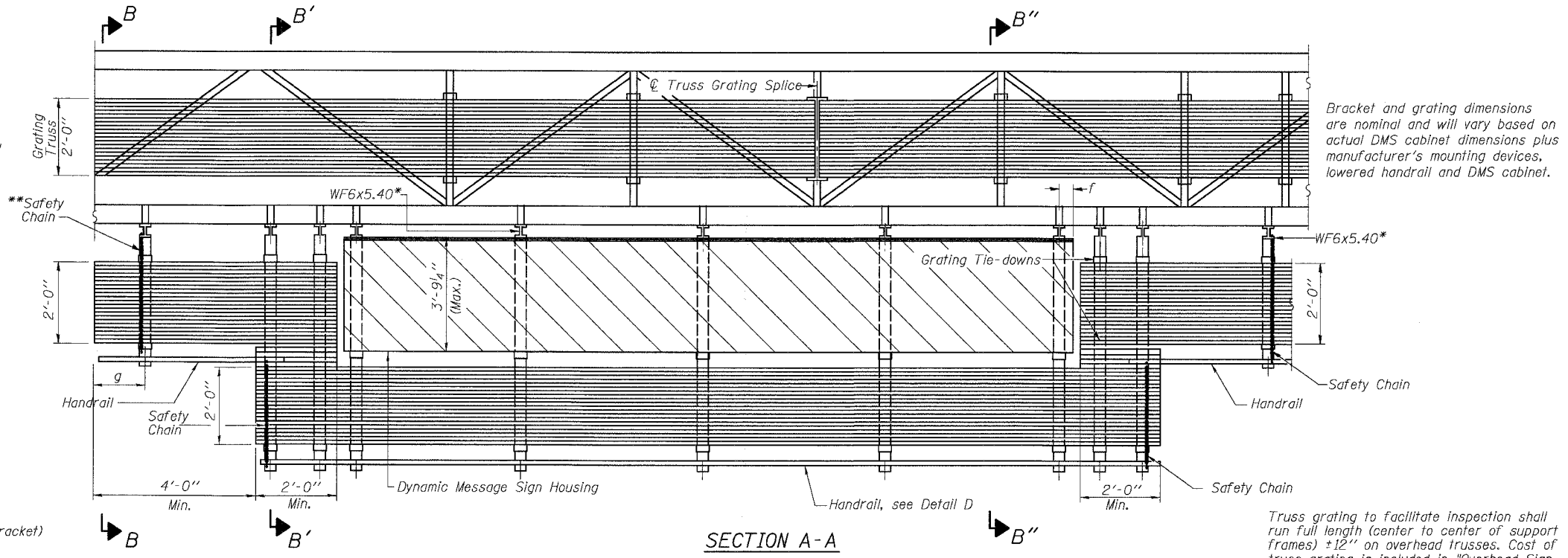
* (1818, ETC, 2324.6-IP) R-9
62300 * (1818, ETC, 2324.6-IP) R-8 62302



PLAN
WALKWAY AND HANDRAIL SKETCH
(Road plan beneath truss varies)



TYPICAL FRONT ELEVATION
With handrail omitted for clarity.
For Section B-B, see Base Sheet OS-A-10-DMS2
For Section B'-B', and B''-B'', see Base Sheet OS-A-10a-DMS2



SECTION A-A

Walkway and Truss Grating width dimensions are nominal and may vary $\pm 1/2$ " based on available standard widths.

Bracket and grating dimensions are nominal and will vary based on actual DMS cabinet dimensions plus manufacturer's mounting devices, lowered handrail and DMS cabinet.

BRACKET TABLE

| WF6x5.40 ASTM B308, Alloy 6061-T6 | | |
|--------------------------------------|--------------------------|--------------------------------|
| Sign Width | | Number Brackets Required |
| Greater Than | Less Than or Equal To | |
| | 10'-0" | 2 |
| 10'-0" | 16'-0" | 3 |
| 16'-0" | 22'-0" | 4 |
| 22'-0" | 28'-0" | 5 |
| 28'-0" | 34'-0" | 6 |

Notes: *Space WF6x5.40 brackets for efficiency and within limits shown:

- f = 12" maximum, 4" minimum (End of sign to ϕ of nearest bracket)
- g = 12" maximum, 4" minimum (End of walkway grating to ϕ of nearest support bracket)
- h = 6'-0" maximum (ϕ to ϕ or walkway support brackets, WF6x5.40)

**If walkway bracket at safety chain location is behind sign, add angle to bracket, see Alternate Safety Chain Attachment on Base Sheet OS-A-11-DMS2

For Details T and W, Section B-B and Grating Splice Details, see Base Sheet OS-A-10-DMS2.
For Details D, F, G and P and Handrail Splice Details, see Base Sheet OS-A-11-DMS2.

Handrail and walkway shall span a minimum of three brackets between splices and/or gap joints.
Place all sign and walkway brackets as close to panel points as practical.
Grating and handrail splices placed as needed.

**OVERHEAD SIGN STRUCTURES
ALTERNATE ALUMINUM WALKWAY DETAILS**

F.A.I. 90/94 (DAN RYAN EXPRESSWAY)
31st Street to 71st Street
~~(SB Express Lanes)~~
(NB Express Lane Reconstruction)

| | |
|----------|------------------------------------|
| DESIGNED | 19 |
| CHECKED | EXAMINED |
| DRAWN | PASSED |
| CHECKED | ENGINEER OF BRIDGES AND STRUCTURES |

| | |
|----|------------------------------------|
| 19 | ENGINEER OF STRUCTURAL SERVICES |
| | ENGINEER OF BRIDGES AND STRUCTURES |

| NUMBER | REVISION | DATE |
|--------|----------|------|
| | | |
| | | |

| Structure Number | Station | a | b | c | d | e | Walkway Grating and Handrail Lengths |
|------------------|------------|--------|--------|--------|--------|-------|--------------------------------------|
| ISO161094R057.7 | 1476+25.00 | 4.69' | 12.00' | 32.00' | 12.00' | 7.33' | 56.00' |
| ISO161094L055.41 | 4598+65 | 10.71' | 6.54' | 31.08' | 14.38' | 7.12' | 56.0' |
| | | | | | | | |

OS-A-9-DMS2 7/1/2001

6/24/2005 11:05:38 AM