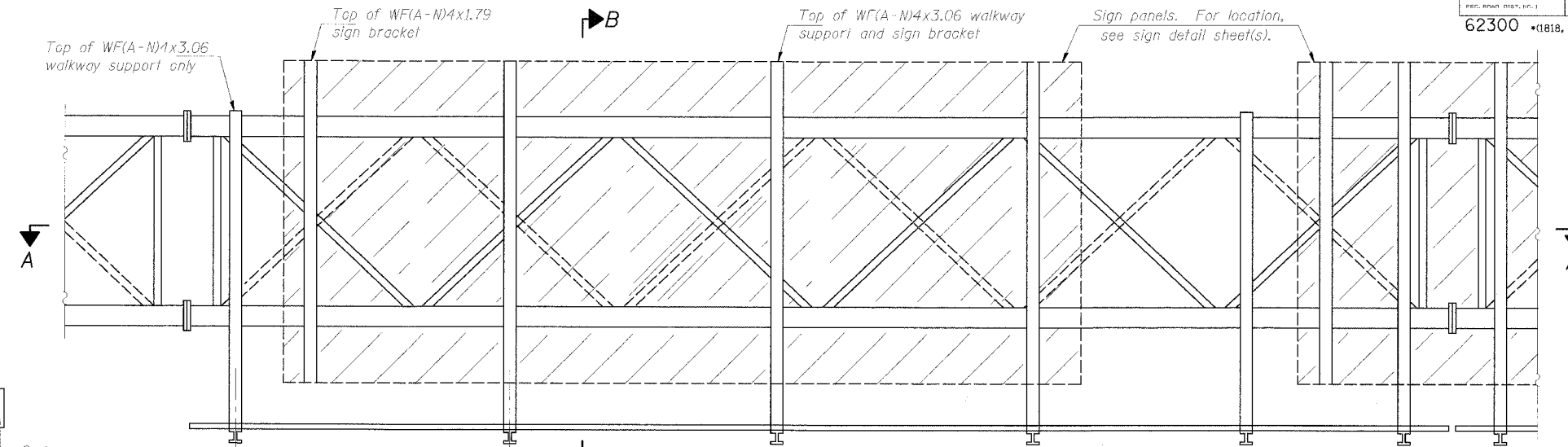
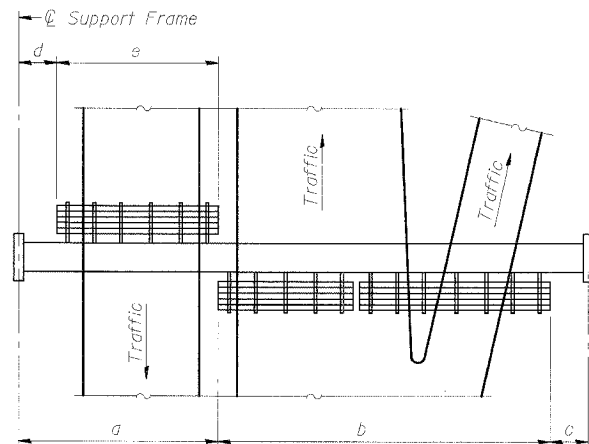


STATE OF ILLINOIS
DEPARTMENT OF TRANSPORTATION

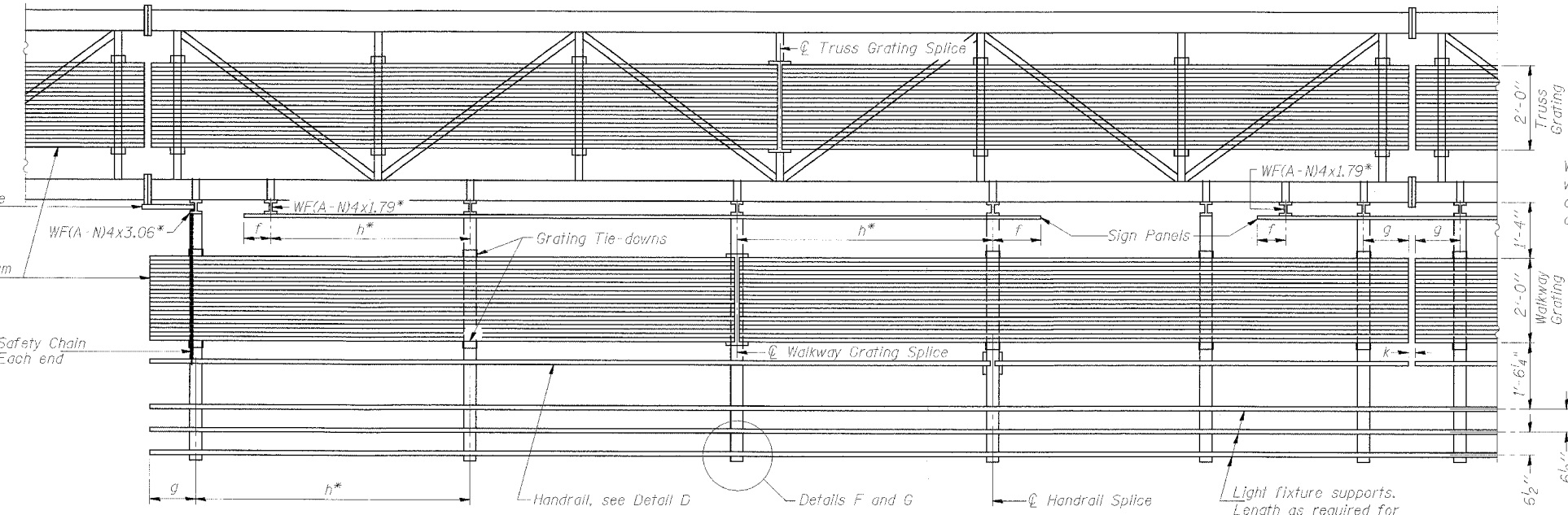
ROUTE NO.	SECTION	COUNTY	TOTAL SHEETS	SHEET NO.
94/90	*	COOK	556	297
REF. DRAW DIST. NO. 1		AL. INCHES	PROJ. AND PROJECT-	
62300		*0818, ETC, 2324.6-1P1R-8		



TYPICAL FRONT ELEVATION
With lights and handrail omitted for clarity.
For Section B-B, see Base Sheet OS-A-10.



PLAN WALKWAY AND HANDRAIL SKETCH
(Road plan beneath truss varies)



SECTION A-A

Handrail and walkway shall span a minimum of three brackets between splices and/or gap joints.
Place all sign and walkway brackets as close to panel points as practical.
Grating, handrail and light support splices placed as needed.

Truss grating to facilitate inspection shall run full length (center to center of support frames) +12" on overhead trusses.
Cost of truss grating is included in "Overhead Sign Structure".

BRACKET TABLE

Sign Width		Number Brackets Required
Greater Than	Less Than or Equal To	
	10'-0"	2
10'-0"	16'-0"	3
16'-0"	22'-0"	4
22'-0"	28'-0"	5
28'-0"	34'-0"	6

Notes: *Space walkway brackets WF(A-N)4x3.06 and sign brackets WF(A-N)4x1.79 for efficiency and within limits shown:

- f = 12" maximum, 4" minimum (End of sign to center of nearest bracket)
- g = 12" maximum, 1" minimum (End of walkway grating to center of nearest support bracket)
- h = 6'-0" maximum (center to center of sign and/or walkway support brackets, WF(A-N)4x1.79 or WF(A-N)4x3.06)
- k = 2" maximum gap between adjacent walkway grating sections and handrail ends

**If walkway bracket at safety chain location is behind sign, add angle to bracket, see Alternate Safety Chain Attachment on Base Sheet OS-A-11.

For Details T and W, Section B-B and Grating Splice Details, see Base Sheet OS-A-10.
For Details D, F, G and P and Handrail Splice Details, see Base Sheet OS-A-11.

Structure Number	Station	a	b	c	d	e	Walkway Grating and Handrail Lengths
ISO161094058.4	2442+20	20.00'	44.0'	8.0'	-	-	44.0'

DESIGNED	MSA
CHECKED	AS
DRAWN	MD
CHECKED	MSA

EXAMINED	20
PASSED	

NUMBER	REVISION	DATE

SGN-18A

**OVERHEAD SIGN STRUCTURES
ALUMINUM WALKWAY DETAILS**

ILLINOIS DEPARTMENT OF TRANSPORTATION
F.A.I. 94/90 (DAN RYAN EXPRESSWAY)
31ST STREET TO 71ST STREET
NB EXPRESS LANE RECONSTRUCTION
OVERHEAD SIGN STRUCTURES