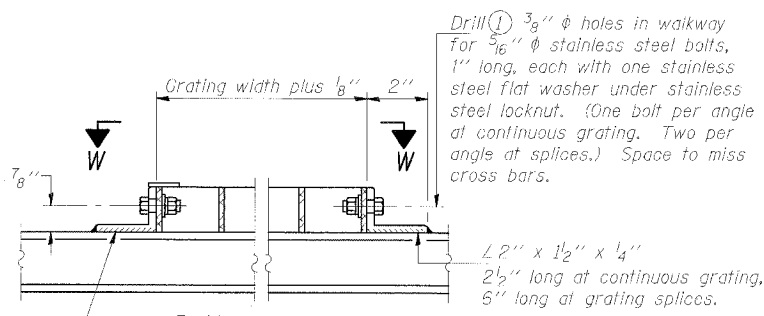
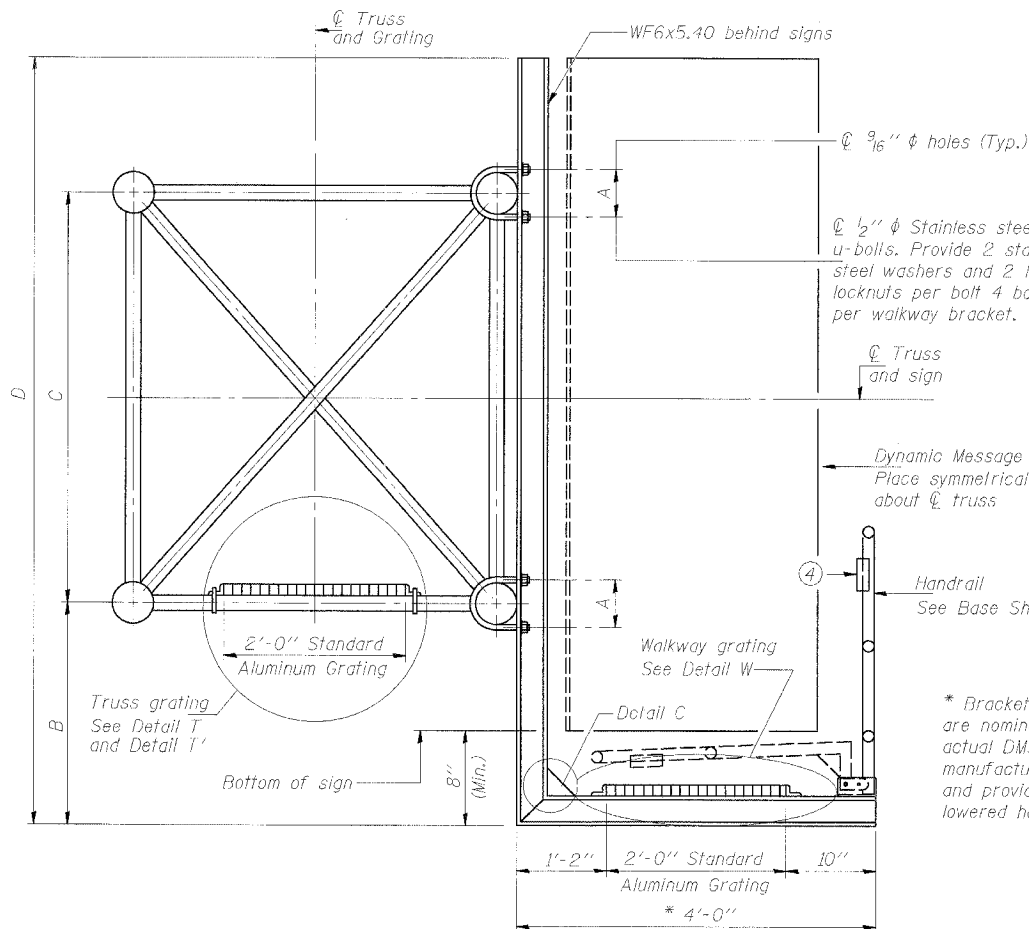


STATE OF ILLINOIS
DEPARTMENT OF TRANSPORTATION

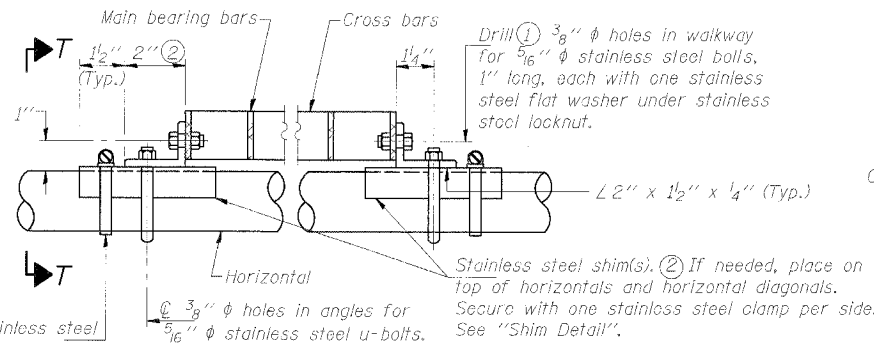
ROUTE NO.	SECTION	COUNTY	PROJECT NO.	SHEET NO.
90/94	*	COOK	556	315

*(1818, ETC, 2324.6-1P) R-8

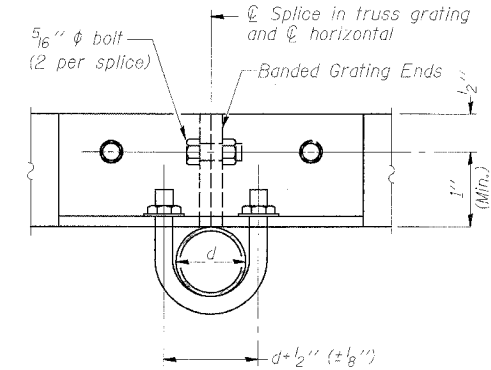
62300



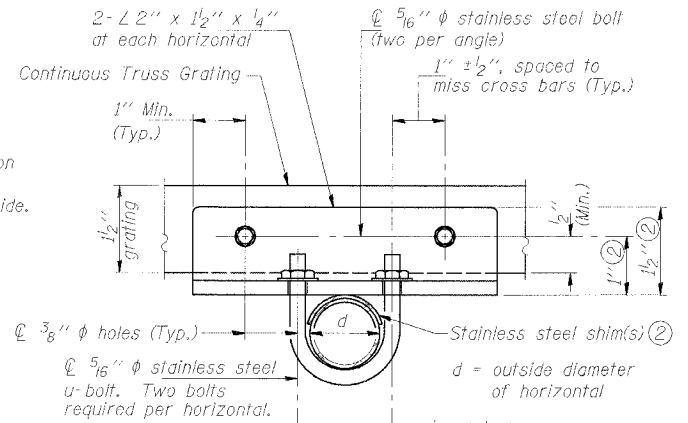
DETAIL W
(Walkway grating)



DETAIL T
(Continuous Truss grating)

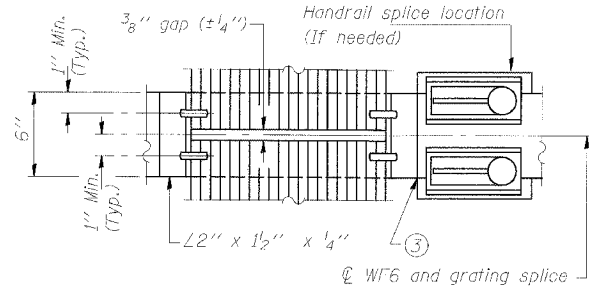
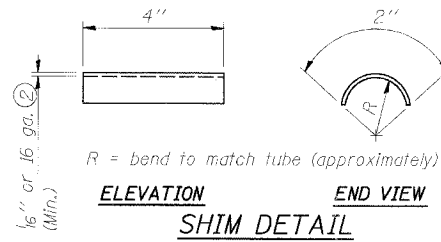


SECTION T'-T'

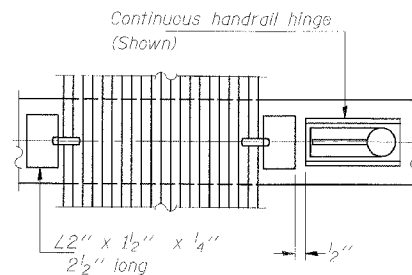


SECTION T-T

SECTION B-B

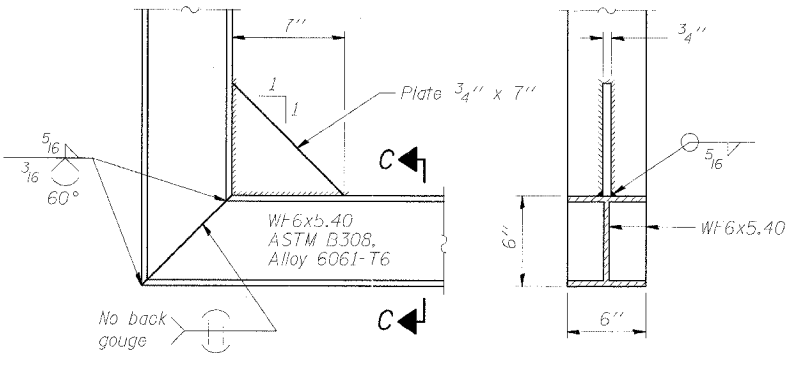


(AT WALKWAY GRATING SPLICE)



(CONTINUOUS WALKWAY GRATING)
SECTION W-W

SECTION C-C



DETAIL C

(See Detail P, Base Sheet OS-A-11-DMS2.)

SPECIFICATIONS FOR STANDARD ALUMINUM GRATING

Main Bearing Bars shall be 3/16" x 1 1/2" on 1 3/16" centers and conform to ASTM B211 Alloy 6061-T6.
Cross bars shall be 3/16" x 1 1/2" on 4" centers and conform to ASTM B221 Alloy 6063-T5 or 6061-T6.

OR

Aluminum Grating with modified "4" sections for main bearing bars shall meet the following requirements:
Main bars shall conform to ASTM B221 Alloy 6061-T6 and have a minimum section modulus equal to 0.0705 in.³ per bar, a depth of 1 1/2", spaced on 1 3/16" centers.
Cross bars shall conform to ASTM B221 Alloy 6063-T5 or T-42 and spaced on 4" centers.

Structure Number	Station	A	B	C	D
150161094R057.7	1476+25.00	7 1/2"	1'-5"	7'-0"	9'-2"

OVERHEAD SIGN STRUCTURES
ALTERNATE ALUMINUM WALKWAY DETAILS

F.A.I. 90/94 (DAN RYAN EXPRESSWAY)
31st Street to 71st Street
(NB Express Lanes)

DESIGNED		19
CHECKED	EXAMINED	
DRAWN	PASSED	ENGINEER OF STRUCTURAL SERVICES
CHECKED		ENGINEER OF BRIDGES AND STRUCTURES

NUMBER	REVISION	DATE