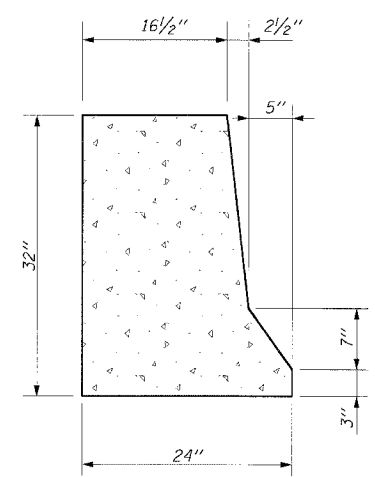
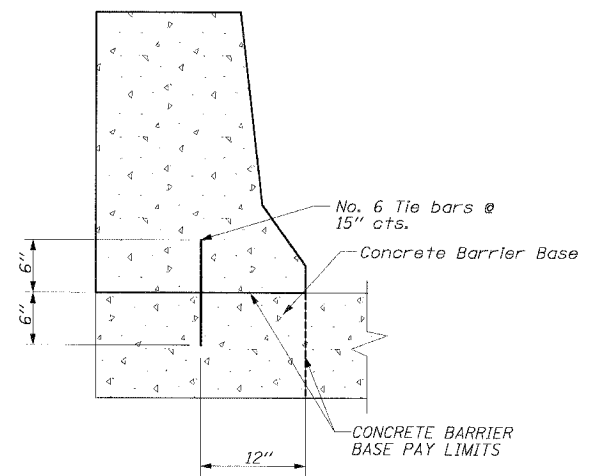


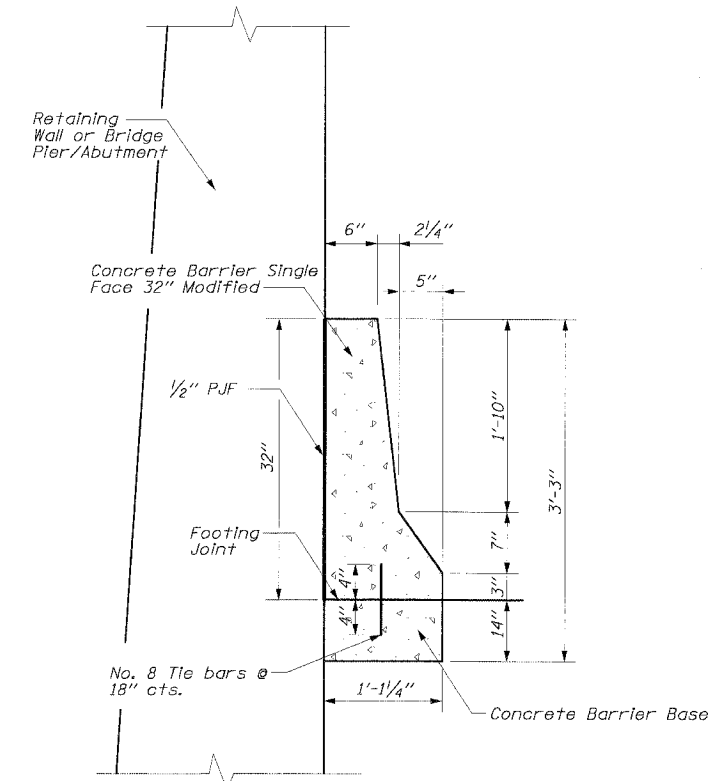
F.A.I. RTE.	SECTION	COUNTY	TOTAL SHEETS	SHEET NO.
94/90		COOK	556	363
STA.	TO STA.			
FED. ROAD DIST. NO.	ILLINOIS	FED. AID PROJECT		
62300	• (1818, ETC, 2324.6-1PR-8			



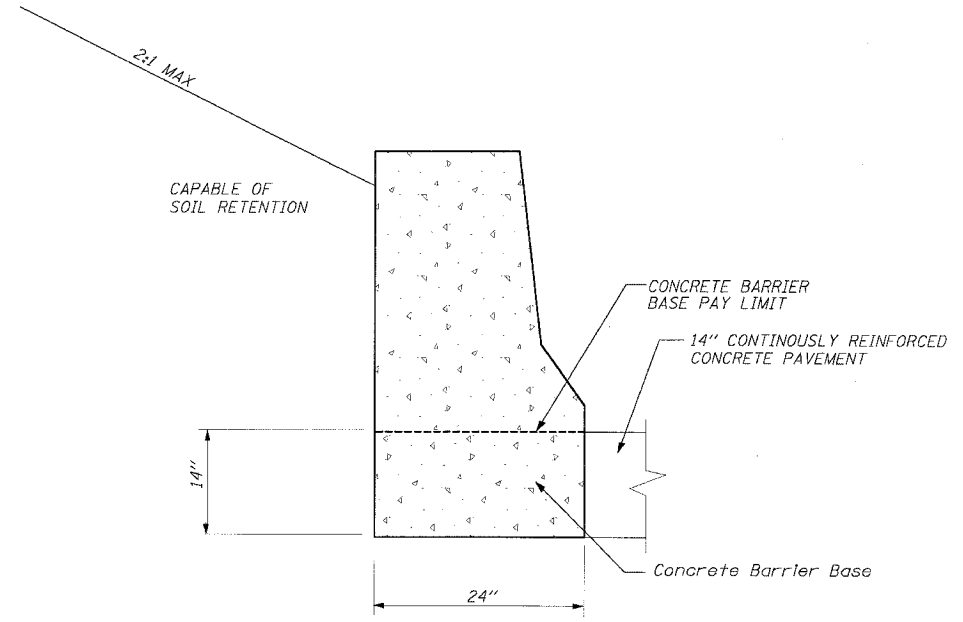
**CONCRETE BARRIER
TYPICAL SECTION**



ANCHORING METHOD

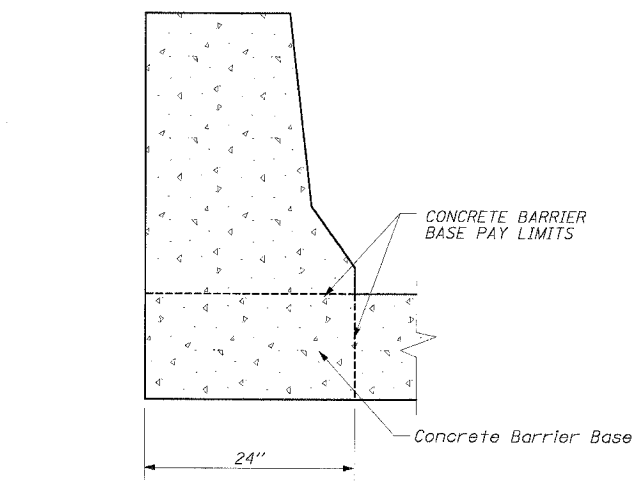


**CONCRETE BARRIER
SINGLE FACE, 32 IN, MODIFIED**
*(Used Adjacent to Retaining Walls
or Bridge Piers or Abutments)*

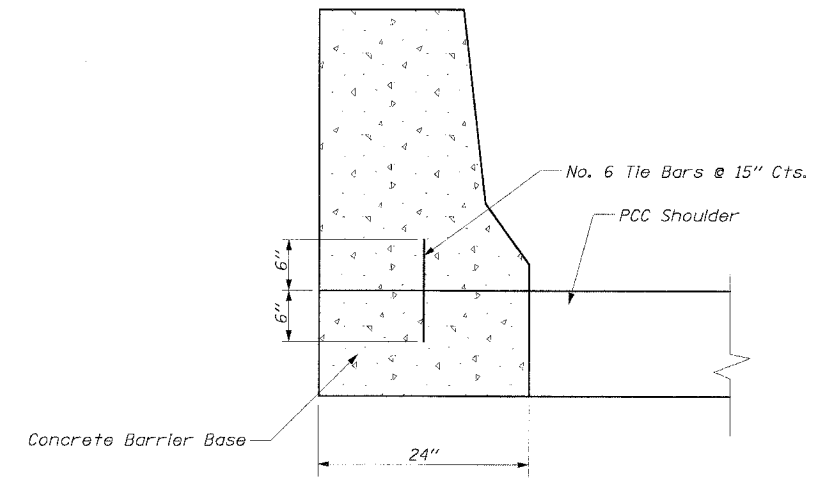


**CONCRETE BARRIER
ALTERNATE ANCHORING METHOD**

IF SOIL RETENTION IS USED, 14" CONTINUOUSLY REINFORCED CONCRETE PAVEMENT MUST BE IN PLACE PRIOR TO BACKFILLING BARRIER WALL



**CONCRETE BARRIER INTEGRAL
WITH PCC SHOULDER SLAB**



**CONCRETE BARRIER ON
INDEPENDANT FOUNDATION**

NOTE:

1. THE CONTRACTOR HAS THE OPTION OF CHOOSING BETWEEN ANCHORING METHODS SHOWN ON THIS SHEET.
2. ALL TIE BARS SHOWN ON THIS SHEET SHALL BE EPOXY COATED.

**Edwards
AND Kelcey**
ONE NORTH FRANKLIN
CHICAGO, IL 60606
PHONE: (312) 251-3000
FAX: (312) 251-3015
WEB: WWW.EKCORP.COM

REVISIONS	
NAME	DATE

ILLINOIS DEPARTMENT OF TRANSPORTATION
F.A.I. 94/90 (DAN RYAN EXPRESSWAY)
31ST STREET TO 71ST STREET
NB EXPRESS LANE RECONSTRUCTION

CIVIL DETAILS
CONCRETE BARRIER, SINGLE FACE, 32"

SCALE: NOT TO SCALE
DATE: 7/7/05

DRAWN BY: AJW
CHECKED BY: EL

CDT-16

06/24/2005 04:28:49 PM