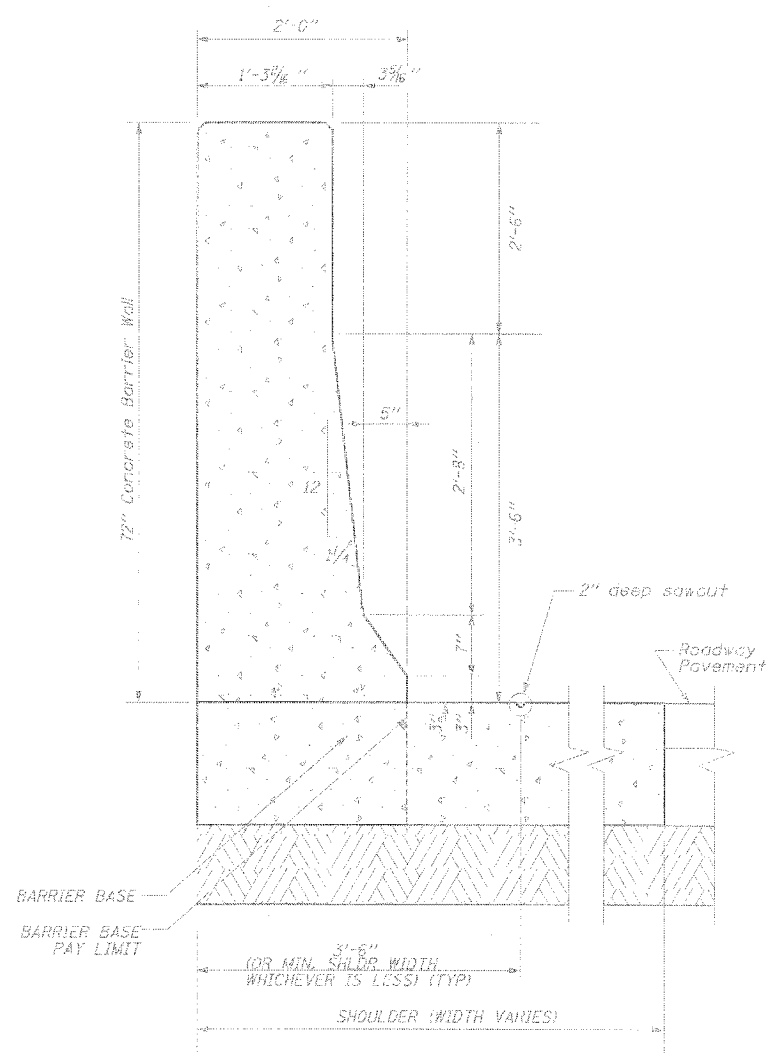
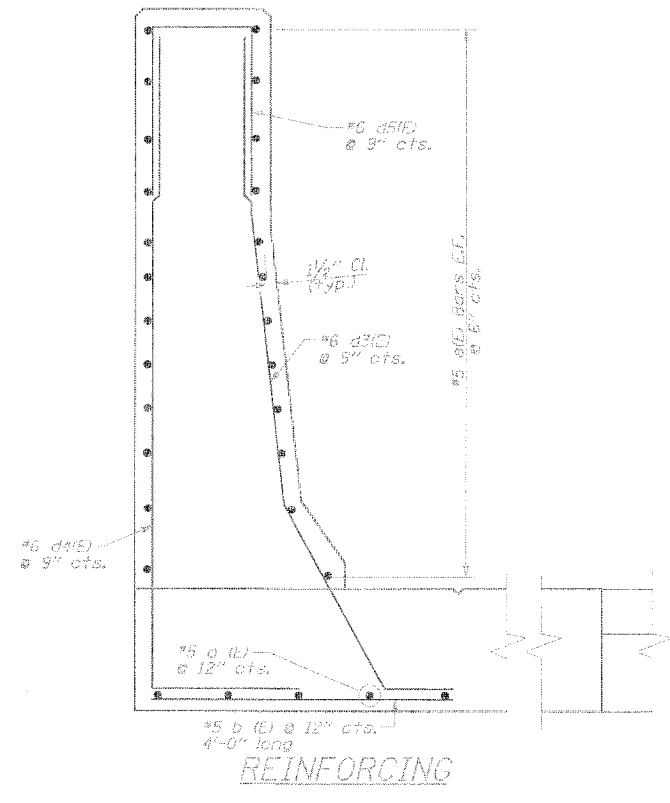


F.A.I. RTE.	SECTION	COUNTY	TOTAL SHEETS	SHEET NO.
94/90	*	COOK	556	364
STA.	TO STA.			
FED. ROAD DIST. NO.	ILLINOIS	FED. AID PROJECT		
62300	* (1818, ETC. 2324.6-1)PR-8			

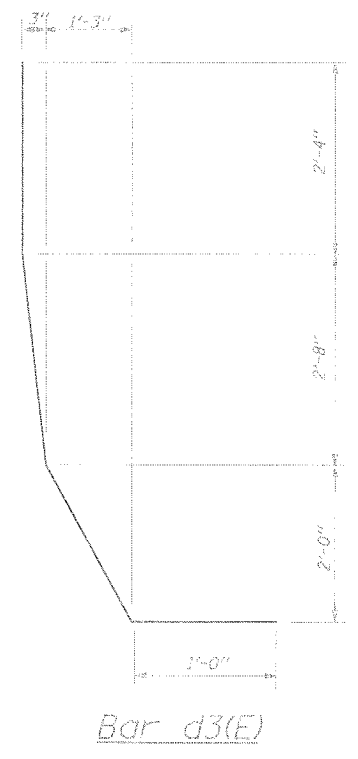


DIMENSIONS

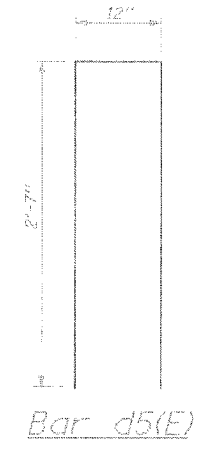
- NOTES:
1. All reinforcing bars, tie bars and dowel bars shall be seated in the final position prior to the concrete operations. The cost of these items is included in the cost of the barrier wall. Bars cannot be mucked into place.
 2. Maintain slope of face as shown on details.



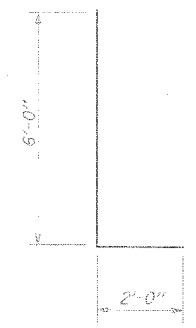
REINFORCING



Bar d3(E)



Bar d5(E)



Bar d4(E)

MIN LAP:
 #5 Bars - 2'-2"
 #6 Bars - 2'-7"

*Lap varies as necessary

CDT-17

REVISIONS		NAME	DATE
NO.	DESCRIPTION		

ILLINOIS DEPARTMENT OF TRANSPORTATION
 F.A.I. 94/90 (DAN RYAN EXPRESSWAY)
 31ST STREET TO 71ST STREET
 NB EXPRESS LANE RECONSTRUCTION
 CONCRETE BARRIER
 SINGLE FACE, 72" (SPECIAL)

SCALE: NOT TO SCALE DRAWN BY: AJW
 DATE: 7/7/05 CHECKED BY: EL

Edwards AND Kelcey
 ONE NORTH FRANKLIN
 CHICAGO, IL 60606
 PHONE: (312) 251-3000
 FAX: (312) 251-3015
 WEB: WWW.EKCORP.COM

P:\030019\030019\CON\H&B\CADD\A\NBEXPRESS\CDT-17.dwg 06/24/2005 01:30:02 PM