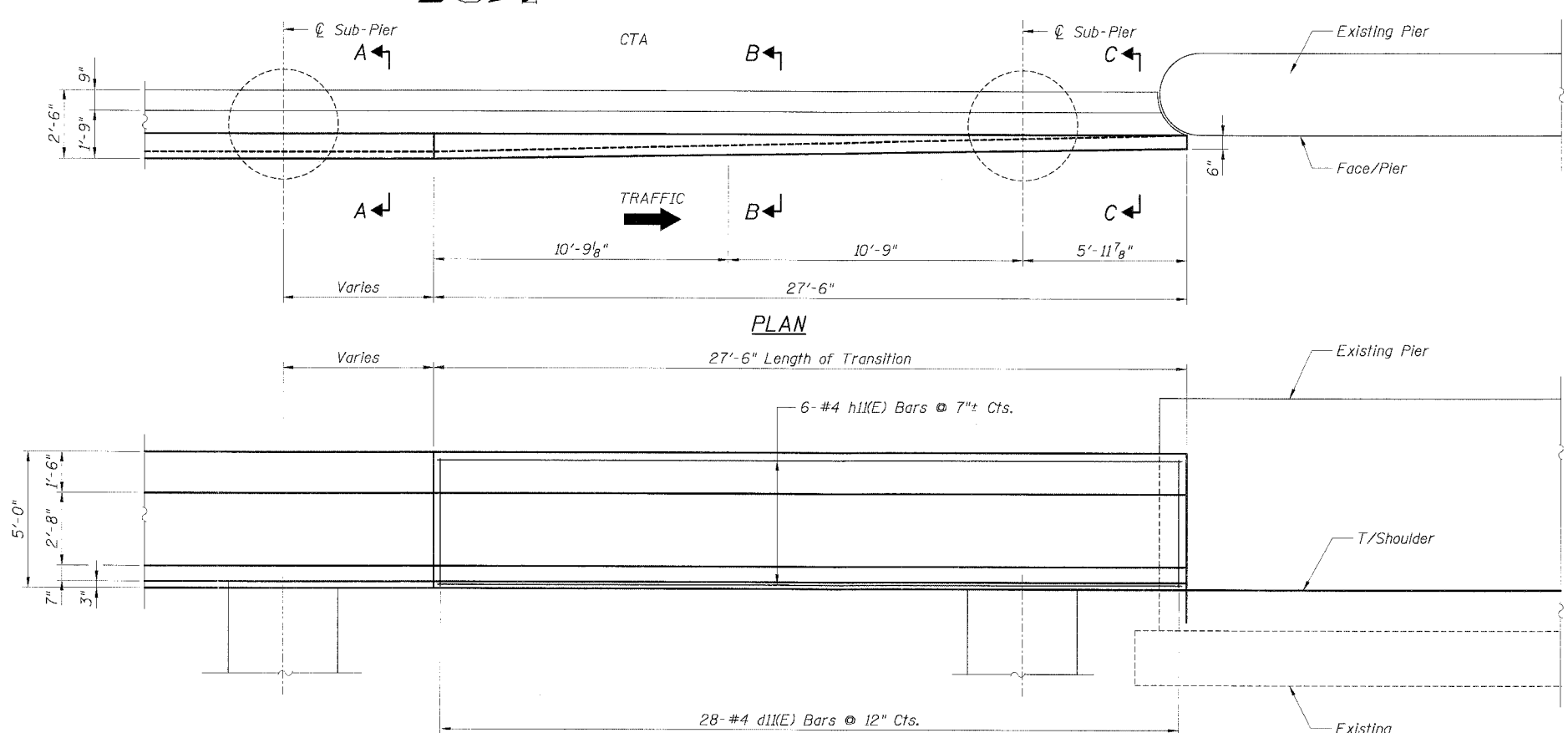


STATE OF ILLINOIS
DEPARTMENT OF TRANSPORTATION

F.A.I. RTE.	SECTION	COUNTY	TOTAL SHEETS	SHEET NO.
90/94		COOK	556	381
STA.	TO STA.			
FED. ROAD DIST. NO. 1 ILLINOIS FED. AID PROJECT				
• (1818, ETC, 2324.6-1P)R-8 62300				

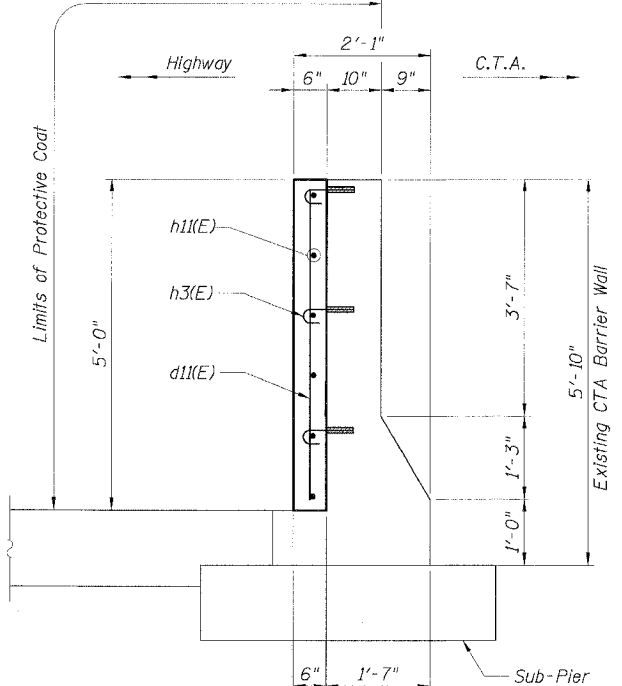
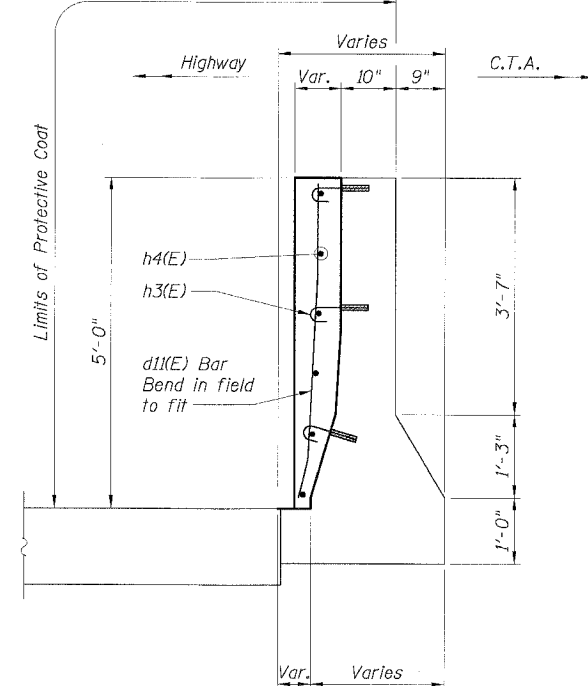
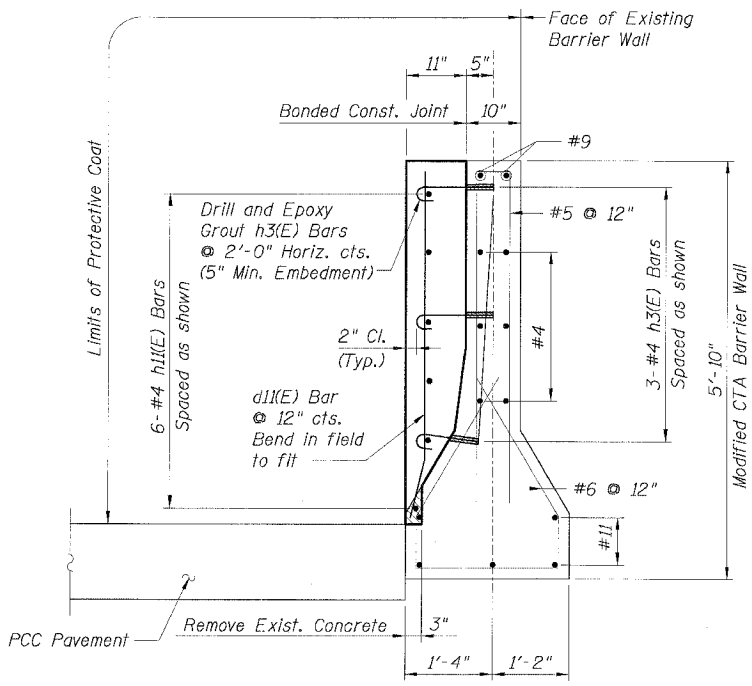
**BILL OF MATERIAL
FOR ONE TRANSITION**

Bar	No.	Size	Length	Shape
d11(E)	28	#4	5'-3"	—
h3(E)	42	#4	1'-6"	⌋
h11(E)	6	#4	27'-2"	—
Item	Unit	Quantity		
Reinforcement Bars, Epoxy Coated	Lbs.	250		
Concrete Structures	Cu. Yd.	3.2		
Protective Coat	Sq. Yd.	40		
Concrete Removal	Cu. Yd.	0.1		



LEGEND:
 Concrete Removal

- NOTES:**
1. Drilling and grouting of #4 h3(E) bars shall be in accordance with Section 584 of the Standard Specifications.
 2. The cost of drilling holes, furnishing and placing Epoxy Grout and setting #4 h3(E) bars shall be included in the cost per cubic yard for Concrete Structures.
 3. Provide joints in facing to match those in the existing barrier.
 4. For Soldier Pile and Lagging Retention System see Sheets 4 and 5.
 5. For Sections C-C, D-D and E-E see Sheet
 6. For locations of Transition, see Roadway Plans.



CTE | AECOM

SECTION A

SECTION B

SECTION C-C

REVISIONS	
NAME	DATE

ILLINOIS DEPARTMENT OF TRANSPORTATION
F.A.I. 90/94 (DAN RYAN EXPRESSWAY)
**EXISTING BARRIER WALL MODIFICATIONS
AT CTA STATIONS**
**PROPOSED T/S SHOULDER AT OR ABOVE EXISTING
VERT. REFACED BARRIER TO PIER
TRANSITION DETAILS (NO TAPER)**
SCALE: None DRAWN BY: CHD
DATE: JULY 7, 2005 CHECKED BY: RDP

06/24/2005 02:43:24 PM C:\p\barrier\VF05B\2A CT Asst