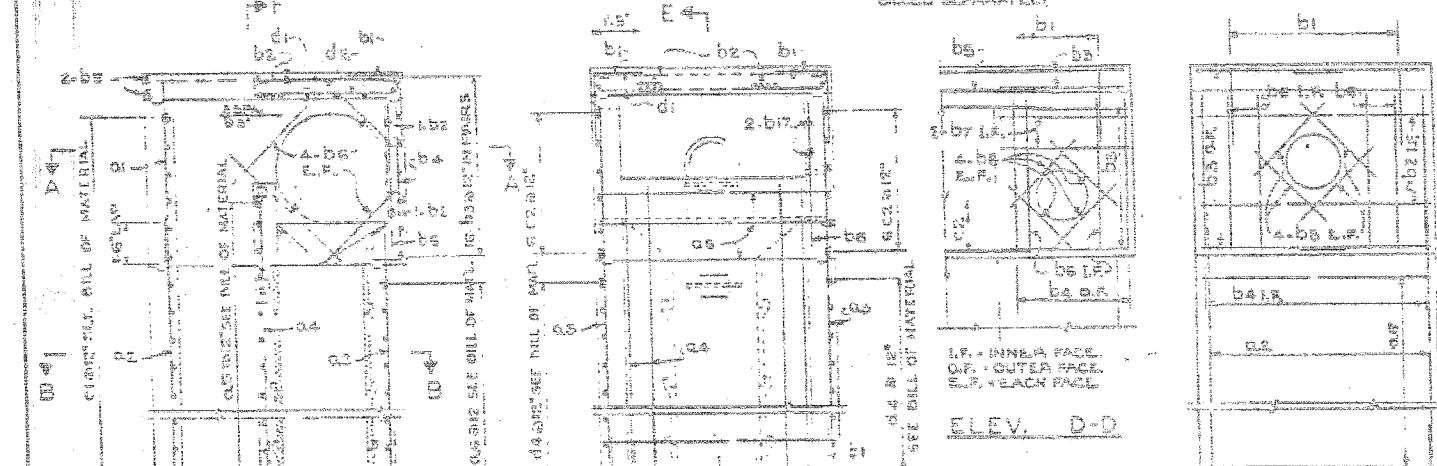


PLAN G-G SECTIONAL PLAN A-A SECTIONAL PLAN B-B

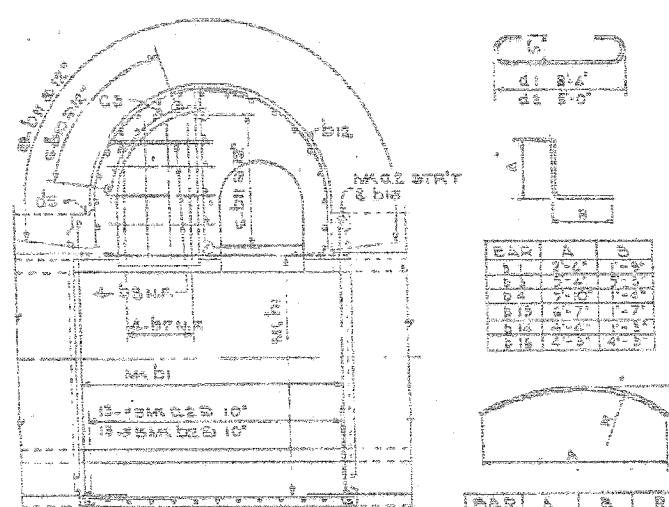
NOTE 1
ALL BARS SHOWN IN SECTIONAL PLAN "B-B" EXCEPT BARS "D1 ARE BILLED SEPARATELY.



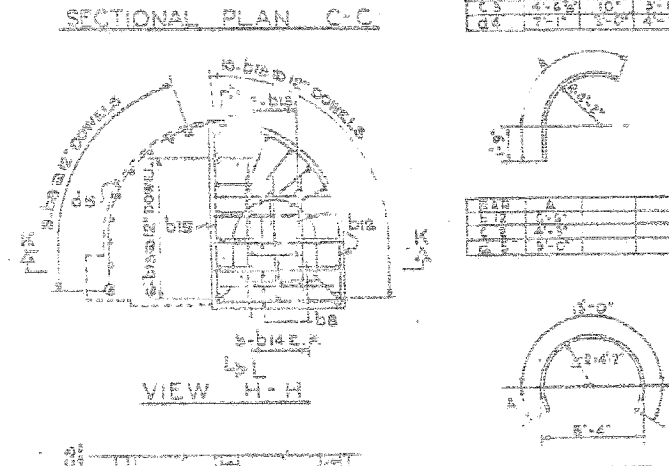
SECTIONAL PLAN C-C SECTION E-E SECTION F-F ELEV. D-D

NOTES:
MINIMUM STEEL CLEARANCE SHALL BE 2" EXCEPT AS NOTED
MINIMUM LAP OF REINFORCEMENT SHALL BE 33 D AMETERS
BEND Y POSSIBLE OR BURN OFF REINFORCING BARS IN FIELD TO CLEAR OPENINGS.

REINFORCING:
TYPE B-36 N SHOWN
TYPE B-36 S OPPOSITE HAND



SECTIONAL PLAN C-C VIEW H-H



SECTION K-K SECTION G-G

BAR	NO.	SIZE	LENGTH	QUANTITY	WEIGHT
B1	1	1/2"	10'-0"	1	1.10
B2	1	1/2"	10'-0"	1	1.10
B3	1	1/2"	10'-0"	1	1.10
B4	1	1/2"	10'-0"	1	1.10
B5	1	1/2"	10'-0"	1	1.10
B6	1	1/2"	10'-0"	1	1.10
B7	1	1/2"	10'-0"	1	1.10
B8	1	1/2"	10'-0"	1	1.10
B9	1	1/2"	10'-0"	1	1.10
B10	1	1/2"	10'-0"	1	1.10
B11	1	1/2"	10'-0"	1	1.10
B12	1	1/2"	10'-0"	1	1.10
B13	1	1/2"	10'-0"	1	1.10
B14	1	1/2"	10'-0"	1	1.10
B15	1	1/2"	10'-0"	1	1.10
B16	1	1/2"	10'-0"	1	1.10
B17	1	1/2"	10'-0"	1	1.10
B18	1	1/2"	10'-0"	1	1.10
B19	1	1/2"	10'-0"	1	1.10
B20	1	1/2"	10'-0"	1	1.10
B21	1	1/2"	10'-0"	1	1.10
B22	1	1/2"	10'-0"	1	1.10
B23	1	1/2"	10'-0"	1	1.10
B24	1	1/2"	10'-0"	1	1.10
B25	1	1/2"	10'-0"	1	1.10
B26	1	1/2"	10'-0"	1	1.10
B27	1	1/2"	10'-0"	1	1.10
B28	1	1/2"	10'-0"	1	1.10
B29	1	1/2"	10'-0"	1	1.10
B30	1	1/2"	10'-0"	1	1.10
B31	1	1/2"	10'-0"	1	1.10
B32	1	1/2"	10'-0"	1	1.10
B33	1	1/2"	10'-0"	1	1.10
B34	1	1/2"	10'-0"	1	1.10
B35	1	1/2"	10'-0"	1	1.10
B36	1	1/2"	10'-0"	1	1.10
B37	1	1/2"	10'-0"	1	1.10
B38	1	1/2"	10'-0"	1	1.10
B39	1	1/2"	10'-0"	1	1.10
B40	1	1/2"	10'-0"	1	1.10
B41	1	1/2"	10'-0"	1	1.10
B42	1	1/2"	10'-0"	1	1.10
B43	1	1/2"	10'-0"	1	1.10
B44	1	1/2"	10'-0"	1	1.10
B45	1	1/2"	10'-0"	1	1.10
B46	1	1/2"	10'-0"	1	1.10
B47	1	1/2"	10'-0"	1	1.10
B48	1	1/2"	10'-0"	1	1.10
B49	1	1/2"	10'-0"	1	1.10
B50	1	1/2"	10'-0"	1	1.10
B51	1	1/2"	10'-0"	1	1.10
B52	1	1/2"	10'-0"	1	1.10
B53	1	1/2"	10'-0"	1	1.10
B54	1	1/2"	10'-0"	1	1.10
B55	1	1/2"	10'-0"	1	1.10
B56	1	1/2"	10'-0"	1	1.10
B57	1	1/2"	10'-0"	1	1.10
B58	1	1/2"	10'-0"	1	1.10
B59	1	1/2"	10'-0"	1	1.10
B60	1	1/2"	10'-0"	1	1.10
B61	1	1/2"	10'-0"	1	1.10
B62	1	1/2"	10'-0"	1	1.10
B63	1	1/2"	10'-0"	1	1.10
B64	1	1/2"	10'-0"	1	1.10
B65	1	1/2"	10'-0"	1	1.10
B66	1	1/2"	10'-0"	1	1.10
B67	1	1/2"	10'-0"	1	1.10
B68	1	1/2"	10'-0"	1	1.10
B69	1	1/2"	10'-0"	1	1.10
B70	1	1/2"	10'-0"	1	1.10
B71	1	1/2"	10'-0"	1	1.10
B72	1	1/2"	10'-0"	1	1.10
B73	1	1/2"	10'-0"	1	1.10
B74	1	1/2"	10'-0"	1	1.10
B75	1	1/2"	10'-0"	1	1.10
B76	1	1/2"	10'-0"	1	1.10
B77	1	1/2"	10'-0"	1	1.10
B78	1	1/2"	10'-0"	1	1.10
B79	1	1/2"	10'-0"	1	1.10
B80	1	1/2"	10'-0"	1	1.10
B81	1	1/2"	10'-0"	1	1.10
B82	1	1/2"	10'-0"	1	1.10
B83	1	1/2"	10'-0"	1	1.10
B84	1	1/2"	10'-0"	1	1.10
B85	1	1/2"	10'-0"	1	1.10
B86	1	1/2"	10'-0"	1	1.10
B87	1	1/2"	10'-0"	1	1.10
B88	1	1/2"	10'-0"	1	1.10
B89	1	1/2"	10'-0"	1	1.10
B90	1	1/2"	10'-0"	1	1.10
B91	1	1/2"	10'-0"	1	1.10
B92	1	1/2"	10'-0"	1	1.10
B93	1	1/2"	10'-0"	1	1.10
B94	1	1/2"	10'-0"	1	1.10
B95	1	1/2"	10'-0"	1	1.10
B96	1	1/2"	10'-0"	1	1.10
B97	1	1/2"	10'-0"	1	1.10
B98	1	1/2"	10'-0"	1	1.10
B99	1	1/2"	10'-0"	1	1.10
B100	1	1/2"	10'-0"	1	1.10

BOWMAN, BARRETT & ASSOCIATES INC.
CONSULTING ENGINEERS
Chicago, Illinois
312.228.0100
www.bbainc.com

FOR INFORMATION ONLY

REVISIONS	DATE

ILLINOIS DIVISION OF HIGHWAYS
SOUTH EXPRESSWAY
REINFORCING
SPECIAL MANHOLE TYPE "B" 36
MAIN DRAIN

ILLINOIS DEPARTMENT OF TRANSPORTATION
F.A.I. 94/90 (DAN RYAN EXPRESSWAY)
31ST STREET TO 71ST STREET
NB EXPRESS LANE RECONSTRUCTION
JUNCTION CHAMBERS
EXISTING DROP MANHOLE PLANS

SCALE: NTS DRAWN BY: BDC
DATE: 07/07/05 CHECKED BY: BLU