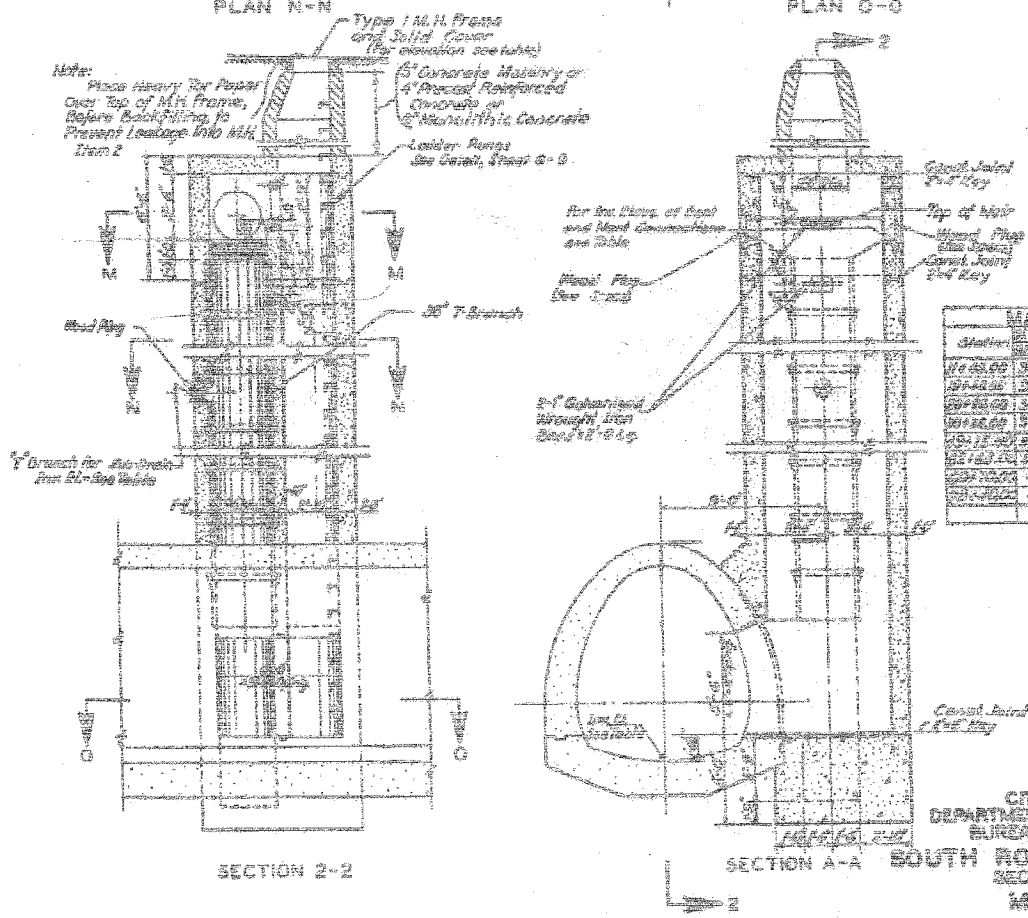
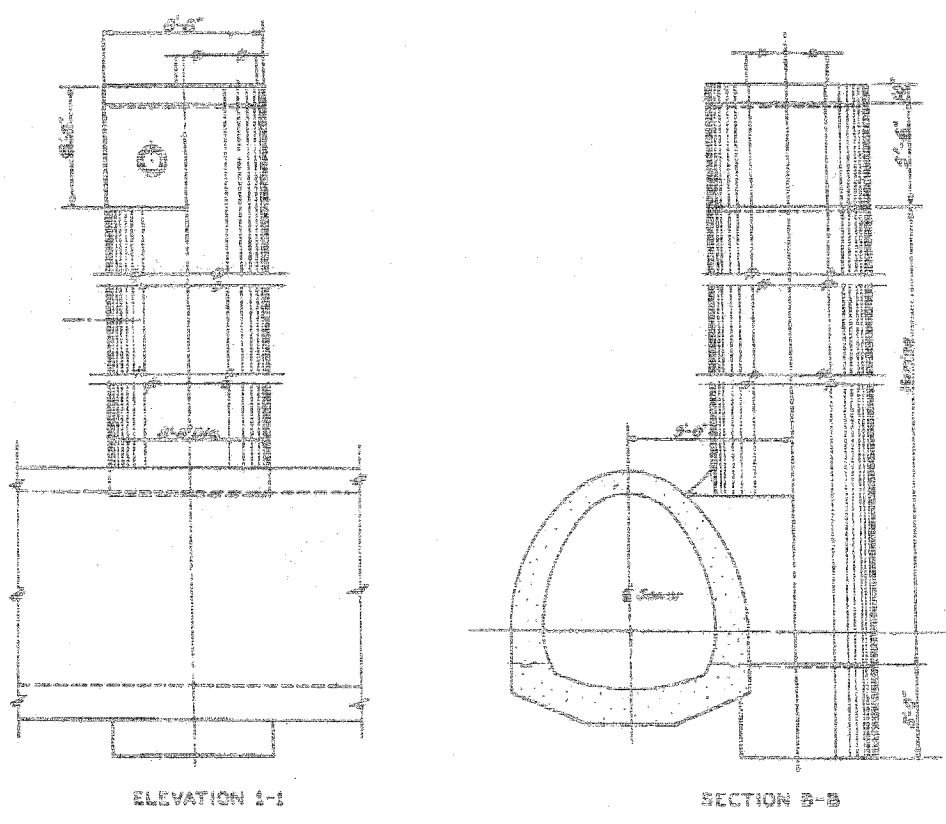
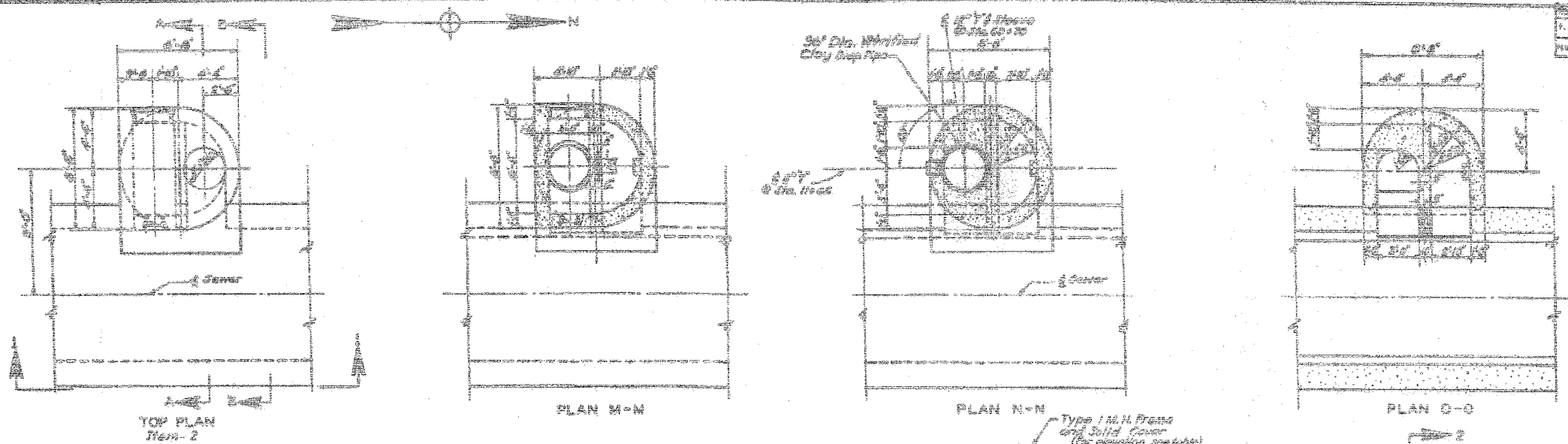


F.A.I.	SECTION	COUNTY	TOTAL SHEETS	SHEET NO.
94/90	*	COOK	556	427
STA.	TO STA.			
FED. ROAD DIST. NO.	ILLINOIS	FED. AID PROJECT		
62300		*1818, ETC, 2324.6-1P1R-8		



Station	Elevation	Distance
16+00.00	-4.14	0.00
16+10.00	-4.33	10.00
16+20.00	-4.52	20.00
16+30.00	-4.72	30.00
16+40.00	-4.91	40.00
16+50.00	-5.10	50.00
16+60.00	-5.29	60.00
16+70.00	-5.48	70.00
16+80.00	-5.67	80.00
16+90.00	-5.86	90.00
17+00.00	-6.05	100.00

Station	Elevation
16+00.00	-4.14
16+10.00	-4.33
16+20.00	-4.52
16+30.00	-4.72
16+40.00	-4.91
16+50.00	-5.10
16+60.00	-5.29
16+70.00	-5.48
16+80.00	-5.67
16+90.00	-5.86
17+00.00	-6.05

CITY OF CHICAGO
DEPARTMENT OF PUBLIC WORKS
BUREAU OF ENGINEERING
SOUTH ROUTE SUPERHIGHWAY
SECTION 8-2324.6-10
MAIN DRAIN
MANHOLE DETAILS

SCALE 1/4" = 1'-0"
MARCH 1991
SHEET NO. 0-5 OF 51 SHEETS

Drawn By: A.C. Hoffman
Checked By: P.H. [unclear]
Approved By: [unclear]

Note:
Continuation to 34" x 18" sewer as shown
For Type 1 M.H. Frame see Sheet 0-7
For location of Manholes see sheets 0-6 to 0-11
For Reinforcement Details see Sheet 0-11

BOWMAN, BARRETT & ASSOCIATES INC.
CONSULTING ENGINEERS
Chicago, Illinois
312.228.0100
www.bbandainc.com

FOR INFORMATION ONLY

REVISIONS	NAME	DATE

ILLINOIS DEPARTMENT OF TRANSPORTATION
F.A.I. 94/90 (DAN RYAN EXPRESSWAY)
31ST STREET TO 71ST STREET
NB EXPRESS LANE RECONSTRUCTION
JUNCTION CHAMBERS
EXISTING DROP MANHOLE PLANS

SCALE: NTS
DATE: 07/07/05
DRAWN BY: BDC
CHECKED BY: BLU

6/24/2005 9:45:08 AM