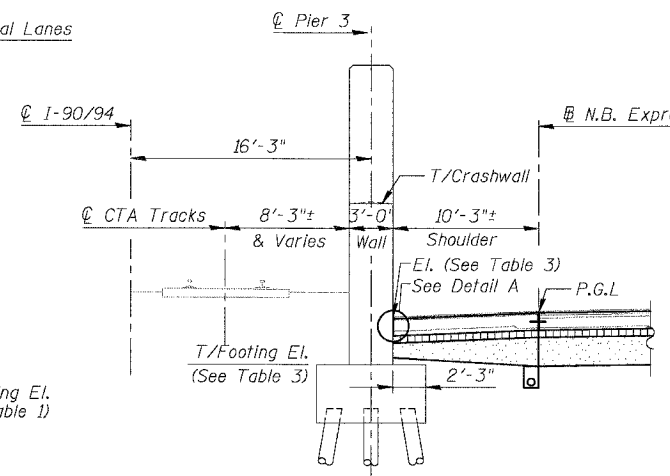
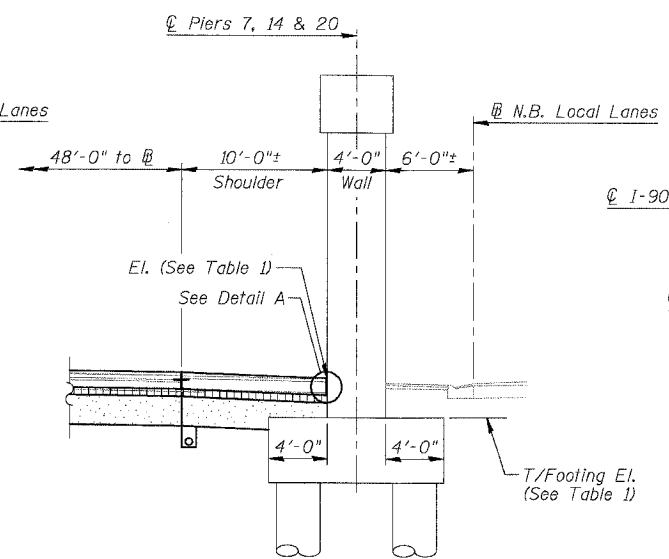
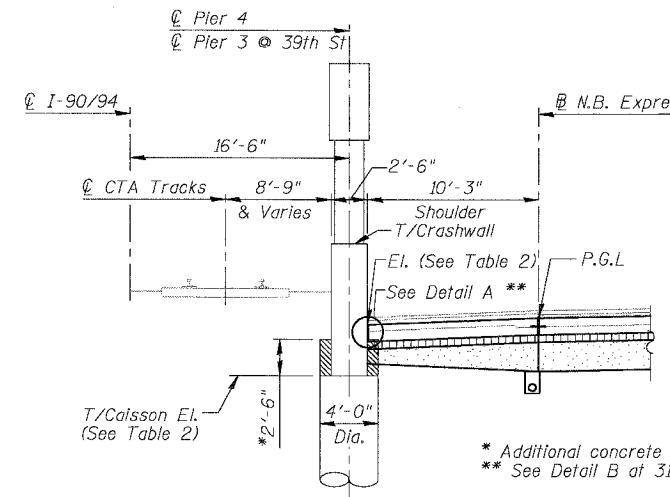
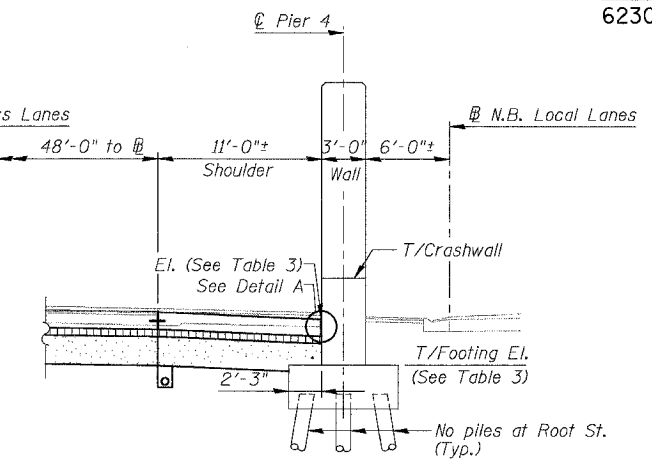


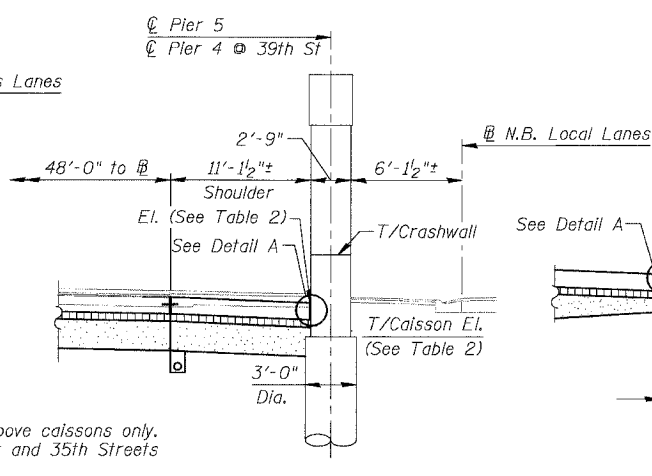
**SHOULDER DETAIL AT OVERHEAD RAILROAD**  
Near 40th Street (S.N.'s 016-0138, 0139 & 0140)



**SHOULDER DETAIL AT 43rd STREET (S.N. 016-1155)**  
Root Street (S.N. 016-1154) Similar as noted



**SHOULDER DETAIL AT OVERHEAD BRIDGES**  
For 31st Street (S.N. 016-1159)  
33rd Street (S.N. 016-115B)  
35th Street (S.N. 016-1160)  
39th Street (S.N. 016-0398) (Similar as noted)



**DETAIL AT 39th STREET**  
For Piers 3 & 4

**TABLE 1**

PIER	T/FOOTING EL.	T/SHOULDER EL.	
		MAX.	MIN.
6	-1.43	1.24	1.08
7	-1.37	1.24	1.08
13	-0.39	1.79	1.60
14	-0.57	1.92	1.79
19	-1.67	0.69	0.44
20	-2.66	0.21	-0.13

**TABLE 2**

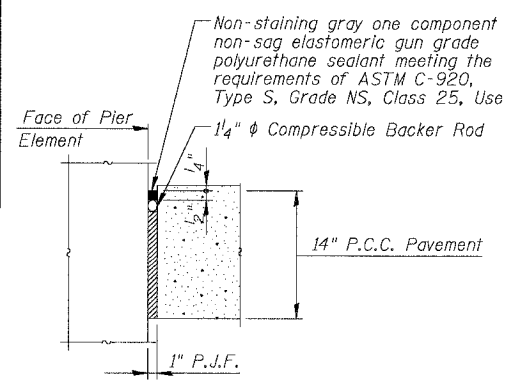
LOCATION	PIER	T/CAISSON EL.	T/SHOULDER EL.	
			MAX.	MIN.
31st St.	4	-7.71	-4.24	-4.50
	5	-6.44	-4.25	-4.54
33rd St.	4	-6.26	-2.20	-2.34
	5	-5.36	-2.21	-2.30
35th St.	4	-4.71	-0.79	-1.25
	5	-3.89	-0.79	-1.30
39th St.	3	-11.30	-5.23	-5.74
	4	-11.30	-5.26	-5.78

**TABLE 3**

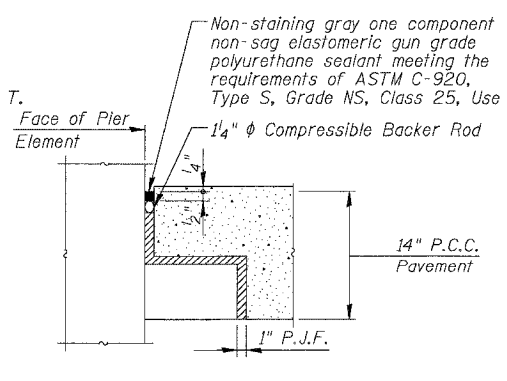
LOCATION	PIER	T/FOOTING EL.	T/SHOULDER EL.	
			MAX.	MIN.
Root St.	3	-9.5	-2.7	-3.5
	4	-8.0	-2.7	-3.5
43rd St.	3	-7.0	-3.4	-3.9
	4	-7.0	-3.4	-3.9

**LEGEND**

- Concrete Pavement
- Stabilized Sub-base
- Sub-base Granular material



**DETAIL A**  
Cost of P.J.F., Backer Rod and sealant included with PCC Shoulder



**DETAIL B**  
Cost of P.J.F., Backer Rod and sealant included with PCC Shoulder

- Notes:
- See Typical Sections for Composition of Exst. & Prop. Pavement.
  - All views looking North.
  - Contractor shall use caution during pavement removal and excavation operations around existing overhead bridge foundations.
  - Top of Rock El. at Root Street is approx. El. -12.0
  - All dimensions at right angles to Expressway.
  - Provide 10 mil polyethylene bond breaker and pour shoulder pavement directly on pier footing.

**REVISIONS**

NAME	DATE

SHEET SD2T-4 OF SD2T-4

ILLINOIS DEPARTMENT OF TRANSPORTATION  
F.A.I. 94/90 (DAN RYAN EXPRESSWAY)  
31ST STREET TO 71ST STREET  
NB EXPRESS LANE RECONSTRUCTION  
PAVEMENT DETAILS AT  
CROSS STREET BRIDGES

SCALE: N.T.S. DRAWN BY: MTR  
DATE: 07/07/05 CHECKED BY: BLU

BOWMAN, BARRETT & ASSOCIATES INC.  
CONSULTING ENGINEERS  
Chicago, Illinois  
312 228 0100  
www.bbainc.com

7:4650cardinal/INSTR/STRUCTURES/660-A/Pavement\_details.dgn 9/07/04 AM 6/24/2005