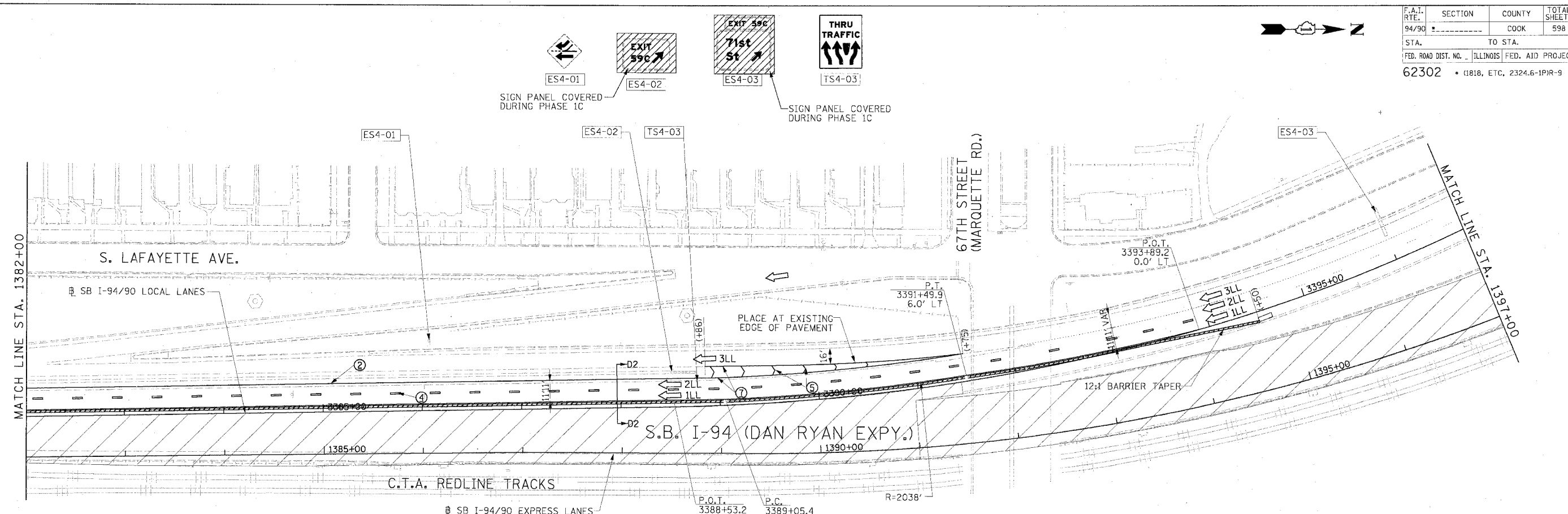


F.A.I. RTE. 94/90	SECTION	COUNTY COOK	TOTAL SHEETS 598	SHEET NO. 94
STA. 62302	TO STA. 1818, ETC. 2324.6-1PR-9			
FED. ROAD DIST. NO. ILLINOIS FED. AID PROJECT				

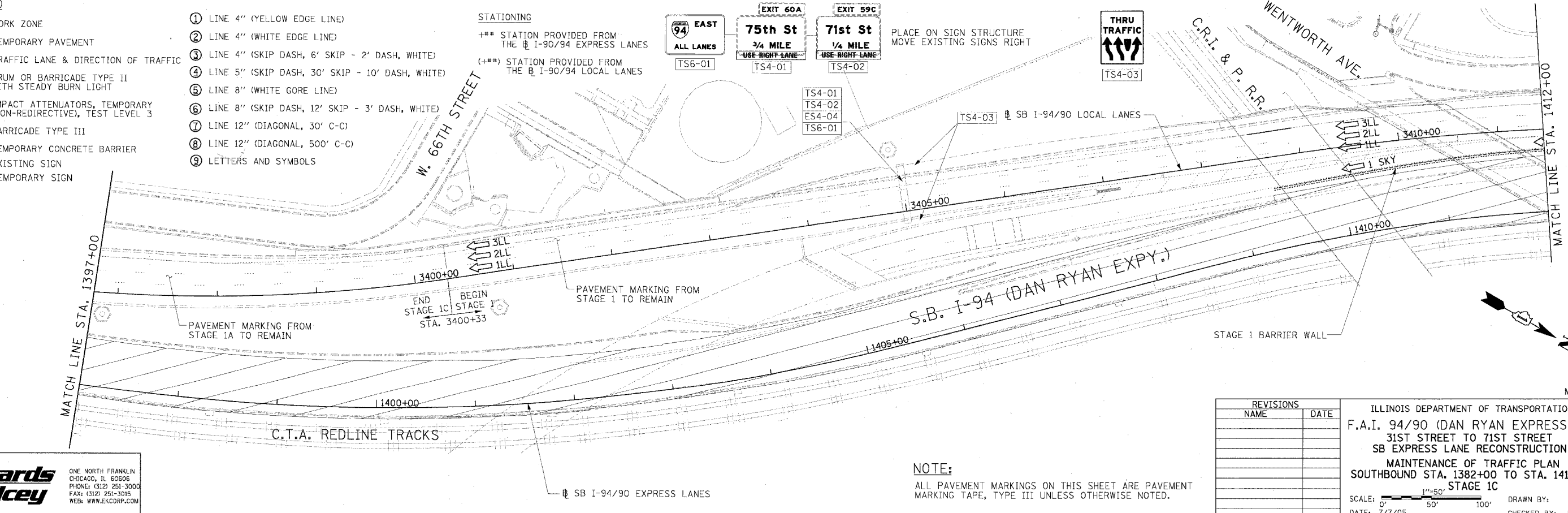


- LEGEND**
- WORK ZONE
  - TEMPORARY PAVEMENT
  - TRAFFIC LANE & DIRECTION OF TRAFFIC
  - DRUM OR BARRICADE TYPE II WITH STEADY BURN LIGHT
  - IMPACT ATTENUATORS, TEMPORARY (NON-REDIRECTIVE), TEST LEVEL 3
  - BARRICADE TYPE III
  - TEMPORARY CONCRETE BARRIER
  - EXISTING SIGN (ESx-xx)
  - TEMPORARY SIGN (TSx-xx)
- 1 LINE 4" (YELLOW EDGE LINE)
  - 2 LINE 4" (WHITE EDGE LINE)
  - 3 LINE 4" (SKIP DASH, 6' SKIP - 2' DASH, WHITE)
  - 4 LINE 5" (SKIP DASH, 30' SKIP - 10' DASH, WHITE)
  - 5 LINE 8" (WHITE GORE LINE)
  - 6 LINE 8" (SKIP DASH, 12' SKIP - 3' DASH, WHITE)
  - 7 LINE 12" (DIAGONAL, 30' C-C)
  - 8 LINE 12" (DIAGONAL, 500' C-C)
  - 9 LETTERS AND SYMBOLS

**STATIONING**

\*\*\* STATION PROVIDED FROM THE SB I-90/94 EXPRESS LANES

(+\*\*) STATION PROVIDED FROM THE SB I-90/94 LOCAL LANES



**Edwards AND Kelcey**

ONE NORTH FRANKLIN  
CHICAGO, IL 60606  
PHONE: (312) 251-3000  
FAX: (312) 251-3015  
WEB: WWW.EDKORP.COM

**NOTE:**  
ALL PAVEMENT MARKINGS ON THIS SHEET ARE PAVEMENT MARKING TAPE, TYPE III UNLESS OTHERWISE NOTED.

REVISIONS	
NAME	DATE

ILLINOIS DEPARTMENT OF TRANSPORTATION  
F.A.I. 94/90 (DAN RYAN EXPRESSWAY)  
31ST STREET TO 71ST STREET  
SB EXPRESS LANE RECONSTRUCTION  
MAINTENANCE OF TRAFFIC PLAN  
SOUTHBOUND STA. 1382+00 TO STA. 1412+00  
STAGE 1C

SCALE: 1"=50'  
DATE: 7/1/05

DRAWN BY: TAI  
CHECKED BY: PJM

MOT-09

06/24/2005 09:36:28 AM