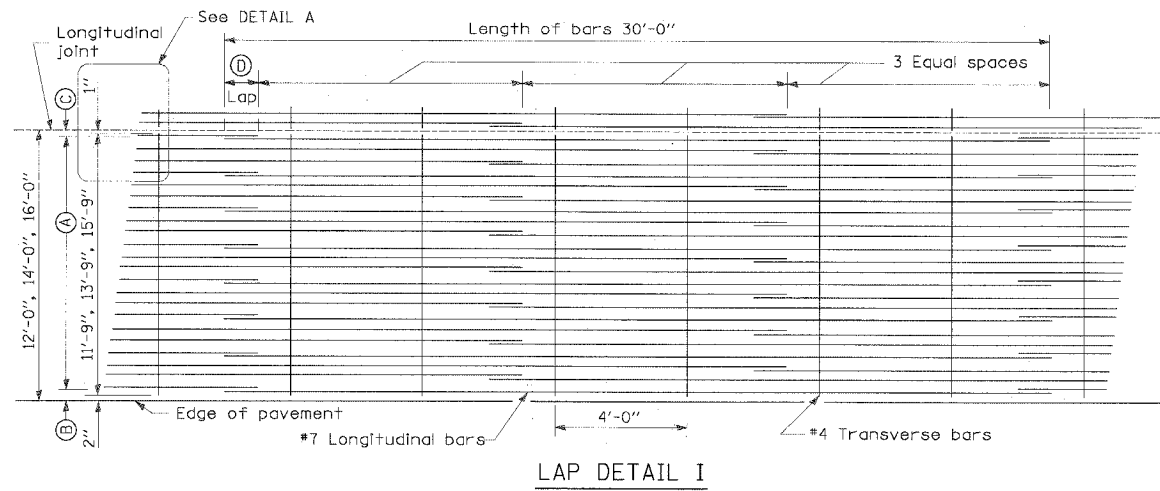
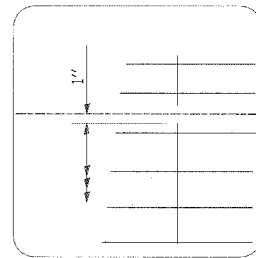


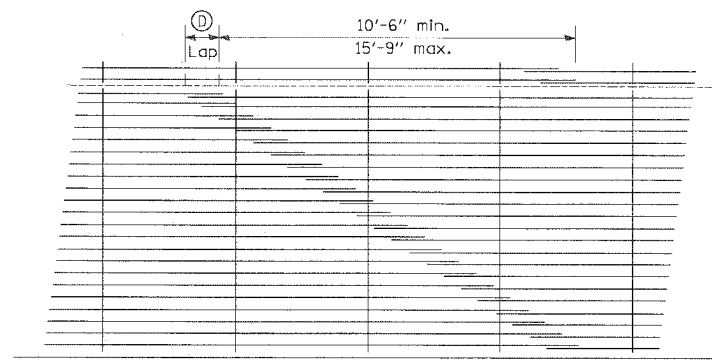
F.A.I. RTE.	SECTION	COUNTY	TOTAL SHEETS	SHEET NO.
94/90		COOK	598	393
STA.	TO STA.			
FED. ROAD DIST. NO.	ILLINOIS FED. AID PROJECT			
62302	• 11818, ETC, 2324.6-1PR-9			



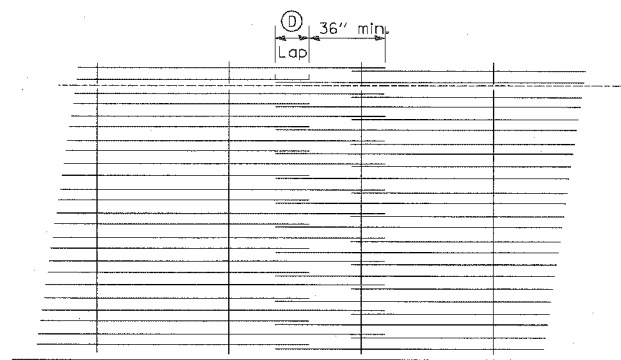
Pavement Width	Bar Size	Pavement Thickness	(A) (Approx. Spacing)	(B)	(C)	(D)
12 feet	#7	14"	26 spaces (27 bars) @ 5 1/4"	3 1/2"	3"	26"
14 feet	#7	14"	30 spaces (31 bars) @ 5 3/8"	3 1/2"	3"	26"
16 feet	#7	14"	35 spaces (36 bars) @ 5 1/4"	3 1/2"	3"	26"



DETAIL A



LAP DETAIL II



LAP DETAIL III

GENERAL NOTES

1. THE PAVEMENT REINFORCEMENT SHALL BE 4.5" FROM THE TOP OF PAVEMENT.
2. EXCEPT AS NOTED OR SHOWN, THE DIMENSIONS AND NOTES SPECIFIED FOR LAP DETAIL I ARE TYPICAL FOR LAP DETAIL II AND III.
3. THE (D) DIMENSION AND THE DISTANCE FROM THE END OF THE TRANSVERSE BAR TO THE EDGE OF PAVEMENT MAY BE INCREASED BY 1" FOR SLIP FORM PAVING.

Edwards AND Kelcey
 ONE NORTH FRANKLIN
 CHICAGO, IL 60606
 PHONE: (312) 251-3000
 FAX: (312) 251-3015
 WEB: WWW.EKCORP.COM

REVISIONS		ILLINOIS DEPARTMENT OF TRANSPORTATION F.A.I. 94/90 (DAN RYAN EXPRESSWAY) 31ST STREET TO 71ST STREET SB EXPRESS LANE RECONSTRUCTION CIVIL DETAILS EXTENDED LANE REINFORCEMENT FOR CONTINUOUSLY REINFORCED PCC PAVEMENT SCALE: NONE DRAWN BY: TAI DATE: 7/1/05 CHECKED BY: DPB
NAME	DATE	

CDT-6
 06/24/2005 12:20:34 PM