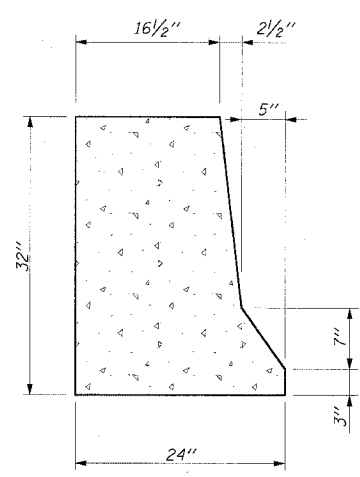
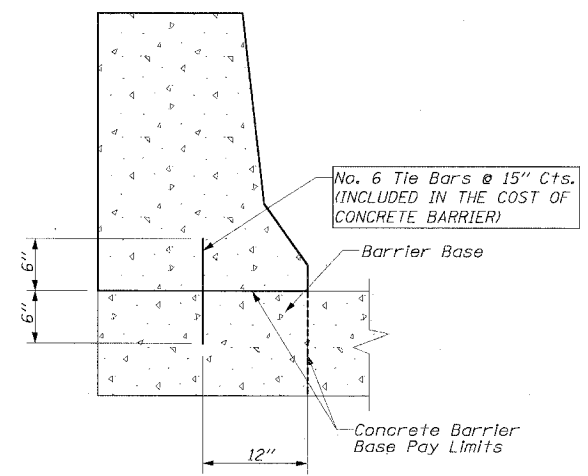


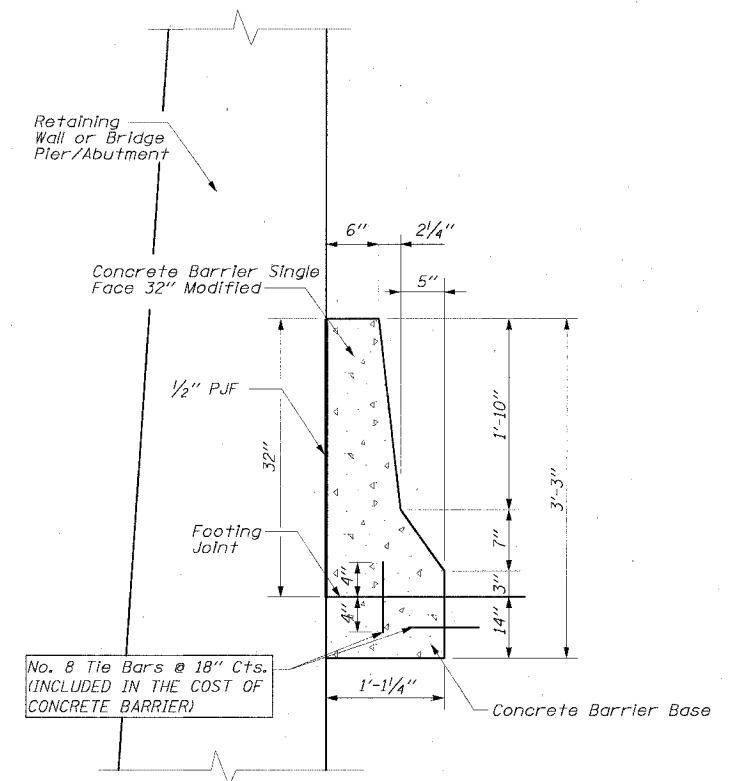
F.A.I. RTE.	SECTION	COUNTY	TOTAL SHEETS	SHEET NO.
94/90		COOK	598	403
STA.		TO STA.		
FED. ROAD DIST. NO.		ILLINOIS	FED. AID PROJECT	
62302		• (1818, ETC, 2324.6-1PR-9		



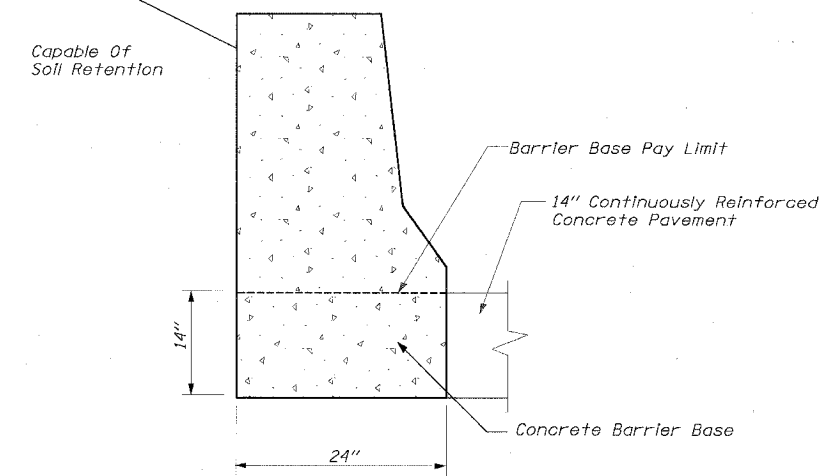
**CONCRETE BARRIER
TYPICAL SECTION**



ANCHORING METHOD

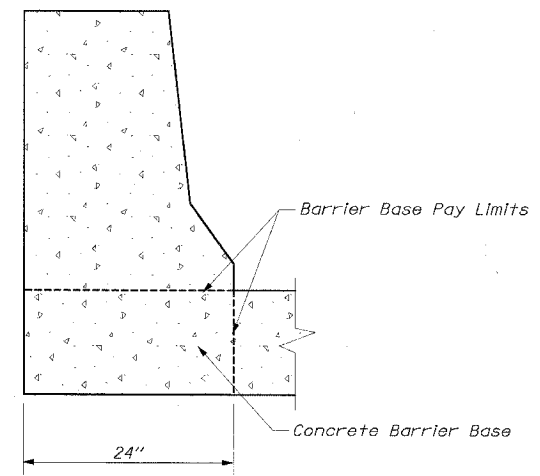


**CONCRETE BARRIER
SINGLE FACE, 32 IN, MODIFIED**
*(Used Adjacent to Retaining Walls
or Bridge Piers or Abutments)*

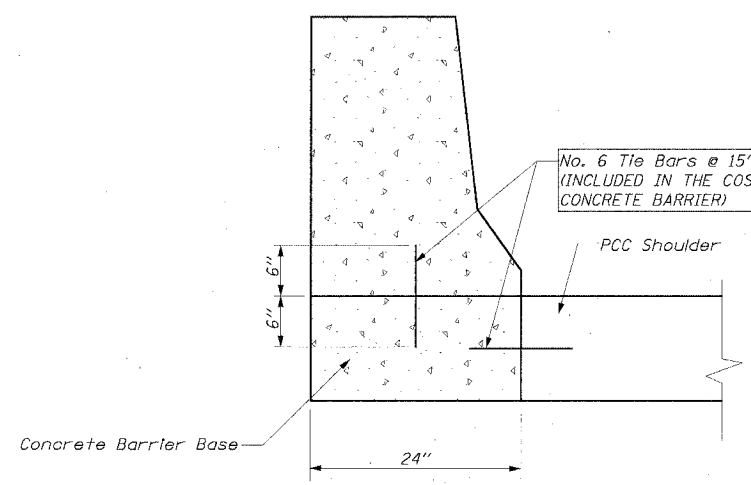


**CONCRETE BARRIER
ALTERNATE ANCHORING METHOD**

IF SOIL RETENTION IS USED, 14" CONTINUOUSLY REINFORCED CONCRETE PAVEMENT MUST BE IN PLACE PRIOR TO BACKFILLING BARRIER WALL



**CONCRETE BARRIER INTEGRAL
WITH PCC SHOULDER SLAB**



**CONCRETE BARRIER ON
INDEPENDANT FOUNDATION**

- NOTE:
1. THE CONTRACTOR HAS THE OPTION OF CHOOSING BETWEEN ANCHORING METHODS SHOWN ON THIS SHEET.
 2. ALL TIE BARS SHOWN ON THIS SHEET SHALL BE EPOXY COATED.

Edwards AND Kelcey
ONE NORTH FRANKLIN
CHICAGO, IL 60606
PHONE: (312) 251-3000
FAX: (312) 251-3015
WEB: WWW.EKCORP.COM

REVISIONS	
NAME	DATE

ILLINOIS DEPARTMENT OF TRANSPORTATION
F.A.I. 94/90 (DAN RYAN EXPRESSWAY)
31ST STREET TO 71ST STREET
SB EXPRESS LANE RECONSTRUCTION

CIVIL DETAILS
CONCRETE BARRIER, SINGLE FACE, 32"

SCALE: NOT TO SCALE
DATE: 7/7/05

DRAWN BY: AJW
CHECKED BY: EL

CDT-16
06/24/2005 12:40 PM