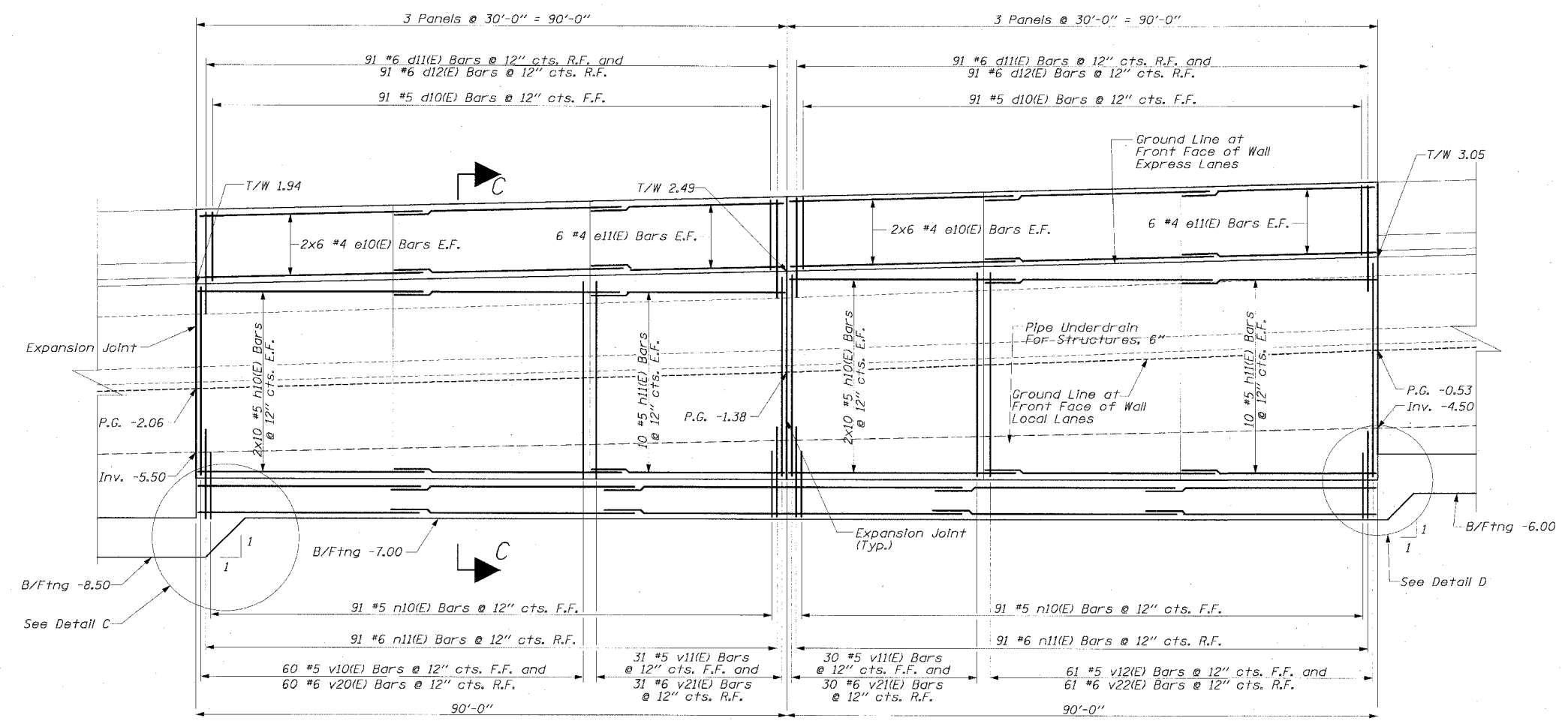
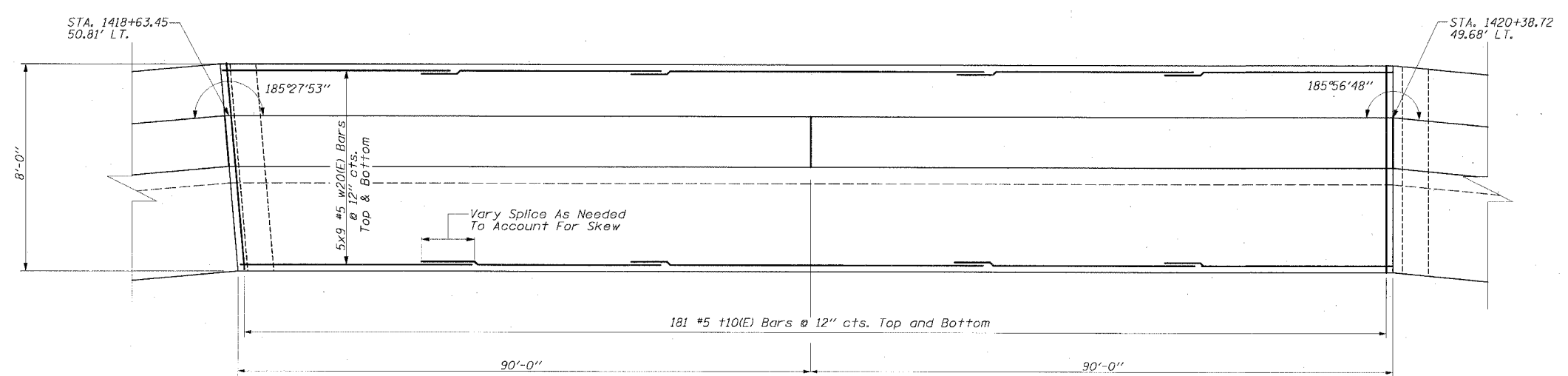


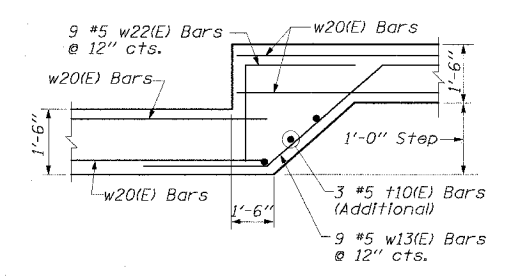
F.A.I. RTE.	SECTION	COUNTY	TOTAL SHEETS	SHEET NO.
94/90		COOK	598	442
STA.	TO STA.			
FED. ROAD DIST. NO.	ILLINOIS	FED. AID PROJECT		
62302	1818, ETC, 2324.6-1PR-9			



ELEVATION



FOOTING PLAN



DETAIL D
(Similar to Detail B on SEL-6)

LEGEND:
 B/Ftng = Bottom Of Footing Elev.
 T/W = Top Of Wall Elev.
 P.G. = Proposed Ground Elev.
 Soil Boring Location
 SSS-22

REVISIONS	
NAME	DATE

ILLINOIS DEPARTMENT OF TRANSPORTATION
 F.A.I. 94/90 (DAN RYAN EXPRESSWAY)
 31ST STREET TO 71ST STREET
 SB EXPRESS LANE RECONSTRUCTION
 RETAINING WALL SEL
 GENERAL PLAN AND ELEVATION
 SB STA. 1416+88.18 TO STA. 1421+97.41
 STRUCTURE NO, NONE
 SCALE: 1" = 40'
 DATE: 07/17/05
 DRAWN BY: ABW
 CHECKED BY: EL

Edwards AND Kelcey
 ONE NORTH FRANKLIN
 CHICAGO, IL 60606
 PHONE: (312) 251-3000
 FAX: (312) 251-3015
 WEB: WWW.EDKORP.COM

06/24/2005 12:41:12 PM