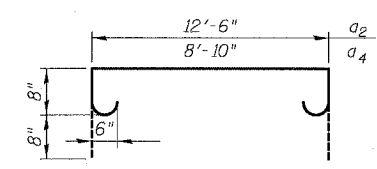
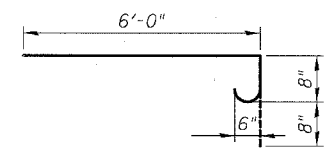


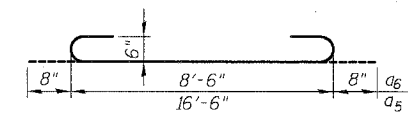
SECTION E-E
(Opposite Wall Typical)



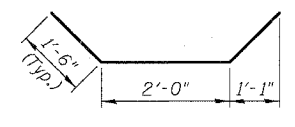
BARS a2 and a4



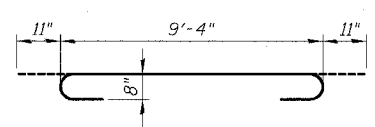
BAR a3



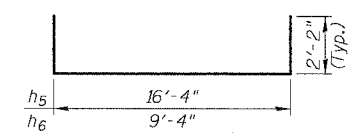
BARS a5 and a6



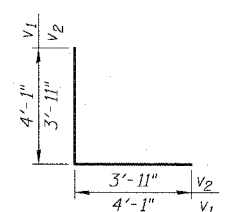
BAR h1



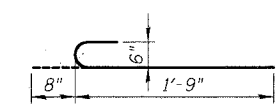
BAR h2



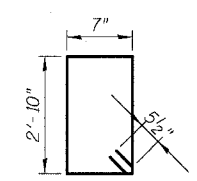
BARS h5 and h6



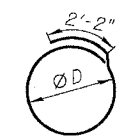
BARS v1 and v2



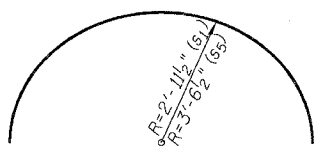
BAR d



BAR s4



BARS s, s2, s3, s6,
s7, s8, and s9



BARS s1 and s5

Pipe Sizes	Opening Size	φ	Bar
-	36"	39"	s
15"	20"	23"	s2
48"	58"	61"	s3
36"	44"	47"	s6
42"	51"	54"	s7
12"	16"	19"	s8
-	24"	27"	s9

NOTES:

- For Pipe Openings and dimensions c and d, see "Table of Junction Chamber Information" on Sheet JC-2.
- All dimensions and elevations shall be field verified prior to construction.
- Concrete pipe sizes shall be coordinated with openings provided into junction chamber before pouring concrete.
- Manhole Frame, Ladder Rungs and any inserts installation shall be coordinated with Drainage Plans.
- Concrete cover for reinforcement steel to be 2" unless otherwise noted.
- v3 Bars are for pipes 36"φ or larger. v4 Bars are for 12"φ and 15"φ pipes.
- Any annular space left between the pipes and the Junction Chamber walls shall be filled with an approved non-shrink grout as directed by the Engineer.
- All lap splices marked on the drawings are minimum.
- Cut bars in field to fit pipe openings as necessary.
- The Concrete Structures and Reinforcement Bars quantities shown are for estimating purposes only. Quantity for concrete is calculated based on 3"φ Drop Shaft but without subtracting volume removed due to pipe openings in walls.

JUNCTION CHAMBER
BAR SCHEDULE

Bar	No.	Size	Length	Shape
a	12	#5	16'-6"	—
a1	7	#5	9'-10"	—
a2	10	#6	15'-2"	⌋
a3	4	#6	7'-4"	⌋
a4	5	#6	11'-6"	⌋
a5	10	#6	17'-10"	⌋
a6	5	#6	9'-10"	⌋
a7	3	#5	8'-6"	—
a8	48	#5	5'-11"	—
a9	8	#5	6'-0"	—
d	17	#6	2'-5"	⌋
h	73	#6	9'-4"	—
h1	28	#5	5'-0"	—
h2	65	#8	11'-2"	⌋
h3	14	#5	9'-4"	—
h4	14	#5	16'-4"	—
h5	14	#5	20'-8"	⌋
h6	14	#5	13'-8"	⌋
s	62	#5	12'-4"	○
s1	10	#5	9'-3"	○
s2	4	#5	7'-0"	○
s3	8	#5	17'-1"	○
s4	8	#5	7'-9"	○
s5	14	#5	11'-2"	○
s6	12	#5	13'-4"	○
s7	28	#5	15'-3"	○
s8	18	#5	6'-1"	○
s9	10	#5	8'-2"	○
v	116	#6	7'-0"	—
v1	36	#7	8'-2"	⌋
v2	80	#7	7'-10"	⌋
v3	384	#6	8'-0"	—
v4	176	#6	4'-3"	—
Concrete Structures		Cu. Yd.	24.3	
Reinforcement Bars		Pound	9,300	

① Bars indicated are for all Junction Chambers. Use Bar at appropriate opening. Weight of Reinforcement Bars Indicated is for JC T2 19-01.

- * - Cut bars to fit in field.
- E.F. - denotes Each Face
- E.S. - denotes Each Side
- I.F. - denotes Inside Face
- O.F. - denotes Outside Face

REVISIONS	
NAME	DATE

SHEET JC-5 OF JC-22
ILLINOIS DEPARTMENT OF TRANSPORTATION
F.A.I. 94/90 (DAN RYAN EXPRESSWAY)
31ST STREET TO 71ST STREET
SB EXPRESS LANE RECONSTRUCTION
JUNCTION CHAMBER, TYPE 2
REINFORCEMENT DETAILS 3
SCALE: N.T.S. DRAWN BY: DJM
DATE: 01/07/05 CHECKED BY: BLU