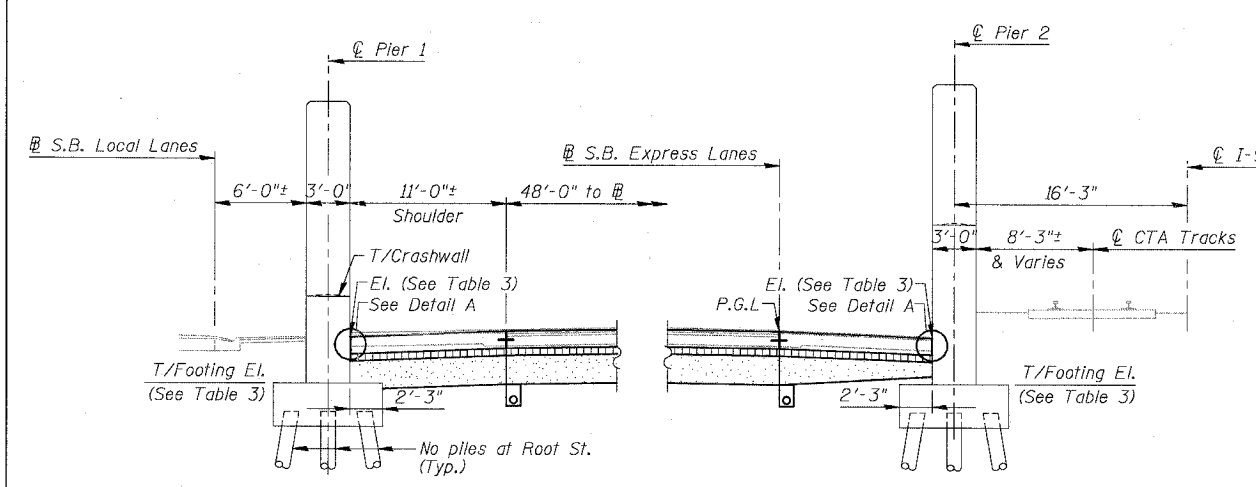
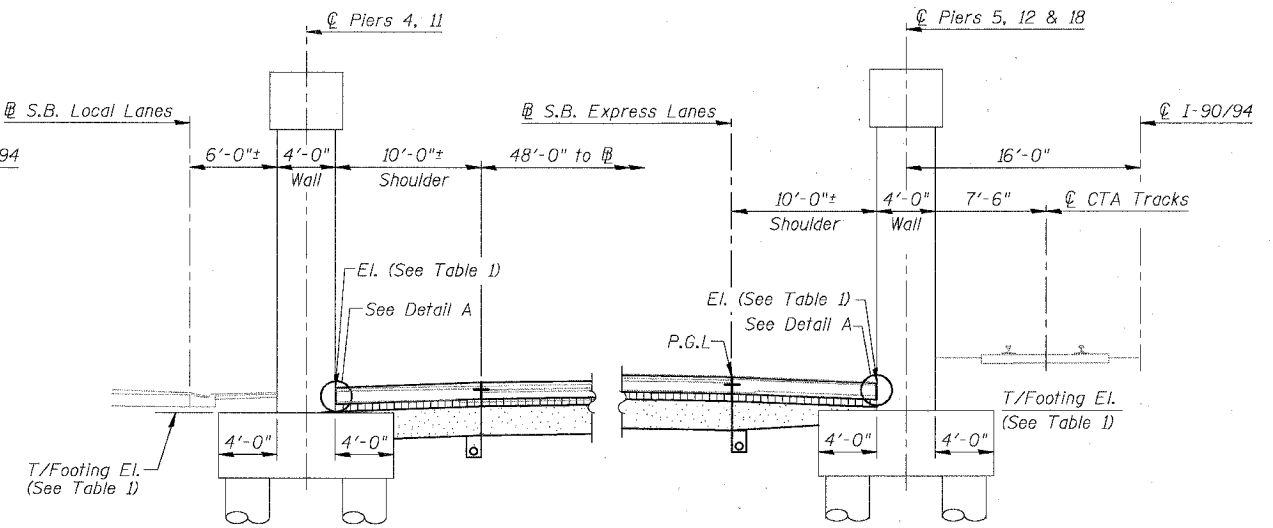


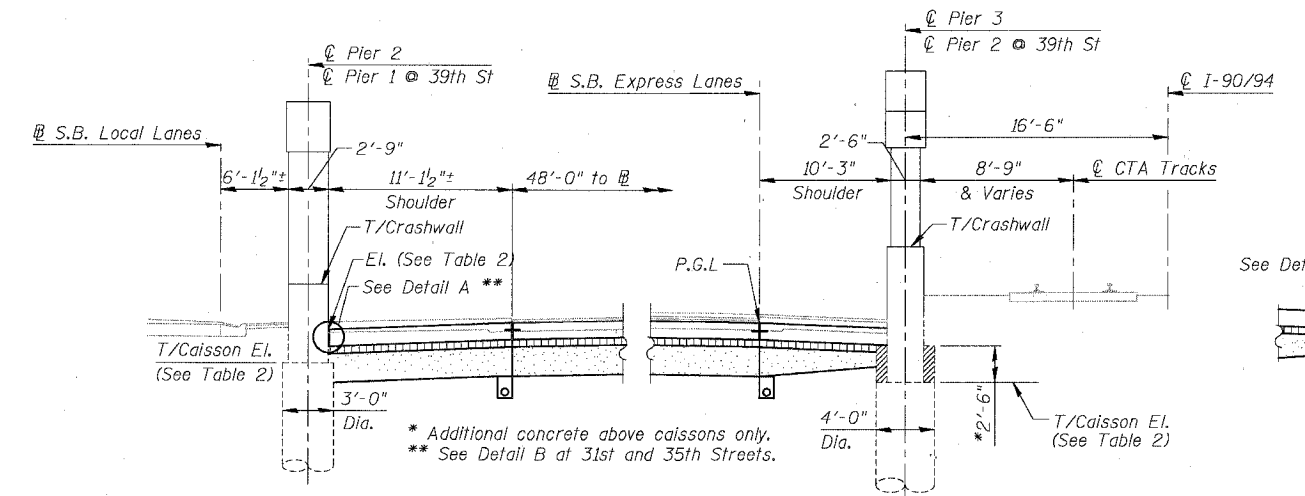
| | | | | |
|---------------------|----------|--------------------------|--------------|-----------|
| F.A.I. | SECTION | COUNTY | TOTAL SHEETS | SHEET NO. |
| 94/90 | | COOK | 598 | 492 |
| STA. | TO STA. | | | |
| FED. ROAD DIST. NO. | ILLINOIS | FED. AID PROJECT | | |
| 62302 | | 11818, ETC, 2324.6-1PR-9 | | |



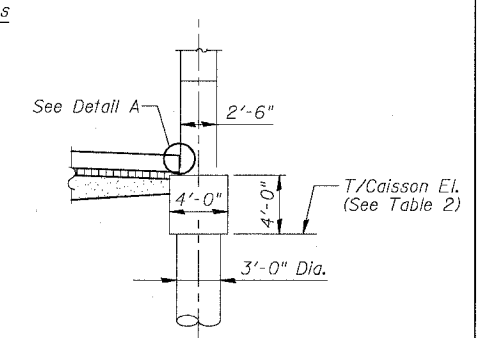
SHOULDER DETAIL AT 43rd STREET (S.N. 016-1155)
 Root Street (S.N. 016-1154) Similar as noted



SHOULDER DETAIL AT OVERHEAD RAILROAD
 Near 40th Street (S.N.'s 016-0138, 0139 & 0140)



SHOULDER DETAIL AT OVERHEAD BRIDGES
 For 31st Street (S.N. 016-1159)
 33rd Street (S.N. 016-1158)
 35th Street (S.N. 016-1160)
 39th Street (S.N. 016-0398) (Similar as noted)



DETAIL AT 39th STREET
 For Piers 1 & 2

TABLE 1

| PIER | T/FOOTING EL. | T/SHOULDER EL. | |
|------|---------------|----------------|------|
| | | MAX. | MIN. |
| 4 | -1.13 | 1.24 | 0.84 |
| 5 | -0.93 | 1.24 | 1.07 |
| 11 | -1.09 | 1.71 | 1.51 |
| 12 | -0.43 | 1.72 | 1.51 |
| 18 | -1.61 | 0.83 | 0.60 |

TABLE 2

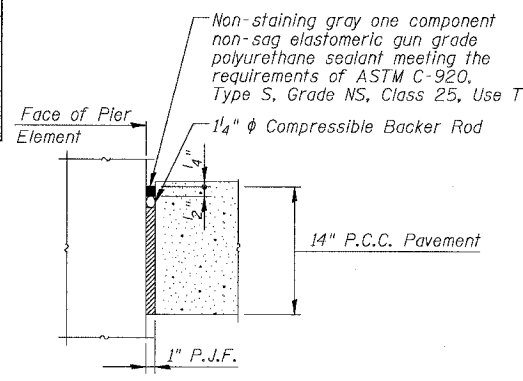
| LOCATION | PIER | T/CAISSON EL. | T/SHOULDER EL. | |
|----------|------|---------------|----------------|-------|
| | | | MAX. | MIN. |
| 31st St. | 2 | -6.44 | -4.28 | -4.53 |
| 33rd St. | 2 | -5.36 | -2.23 | -2.38 |
| 35th St. | 2 | -6.26 | -2.18 | -2.35 |
| 35th St. | 3 | -3.89 | -0.83 | -1.28 |
| 35th St. | 3 | -4.71 | -0.75 | -1.27 |
| 39th St. | 1 | -11.30 | -5.28 | -5.79 |
| 39th St. | 2 | -11.30 | -5.25 | -5.75 |

TABLE 3

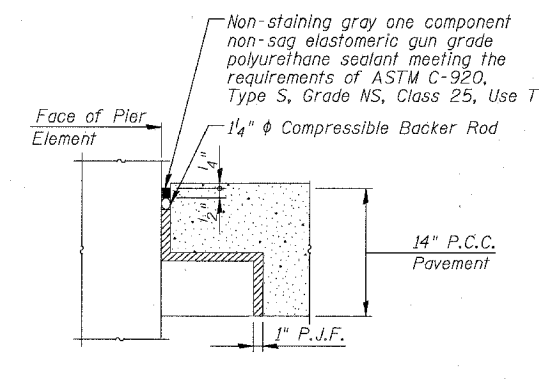
| LOCATION | PIER | T/FOOTING EL. | T/SHOULDER EL. | |
|----------|------|---------------|----------------|------|
| | | | MAX. | MIN. |
| Root St. | 1 | -9.5 | -3.4 | -3.5 |
| Root St. | 2 | -9.5 | -2.7 | -3.5 |
| 43rd St. | 1 | -7.0 | -3.4 | -3.9 |
| 43rd St. | 2 | -7.0 | -3.4 | -3.9 |

LEGEND

- Concrete Pavement
- Stabilized Sub-base
- Sub-base Granular material



DETAIL A
 Cost of P.J.F., Backer Rod and sealant included with PCC Shoulder



DETAIL B
 Cost of P.J.F., Backer Rod and sealant included with PCC Shoulder

- Notes:**
- See Typical Sections for Composition of Exist. & Prop. Pavement.
 - All views looking North.
 - Contractor shall use caution during pavement removal and excavation operations around existing overhead bridge foundations.
 - Top of Rock El. at Root Street is approx. El. -12.0
 - All dimensions at right angles to Expressway.

REVISIONS

| NAME | DATE |
|------|------|
| | |
| | |
| | |
| | |
| | |

SHEET SDET-4 OF SDET-4

ILLINOIS DEPARTMENT OF TRANSPORTATION
 F.A.I. 94/90 (DAN RYAN EXPRESSWAY)
 31ST STREET TO 71ST STREET
 SB EXPRESS LANE RECONSTRUCTION
 PAVEMENT DETAILS AT
 CROSS STREET BRIDGES

SCALE: N.T.S. DRAWN BY: MTR
 DATE: 07/07/05 CHECKED BY: BLU

BOWMAN, BARRETT & ASSOCIATES INC.
 CONSULTING ENGINEERS
 Chicago, Illinois
 312.228.0100
 www.bbainc.com