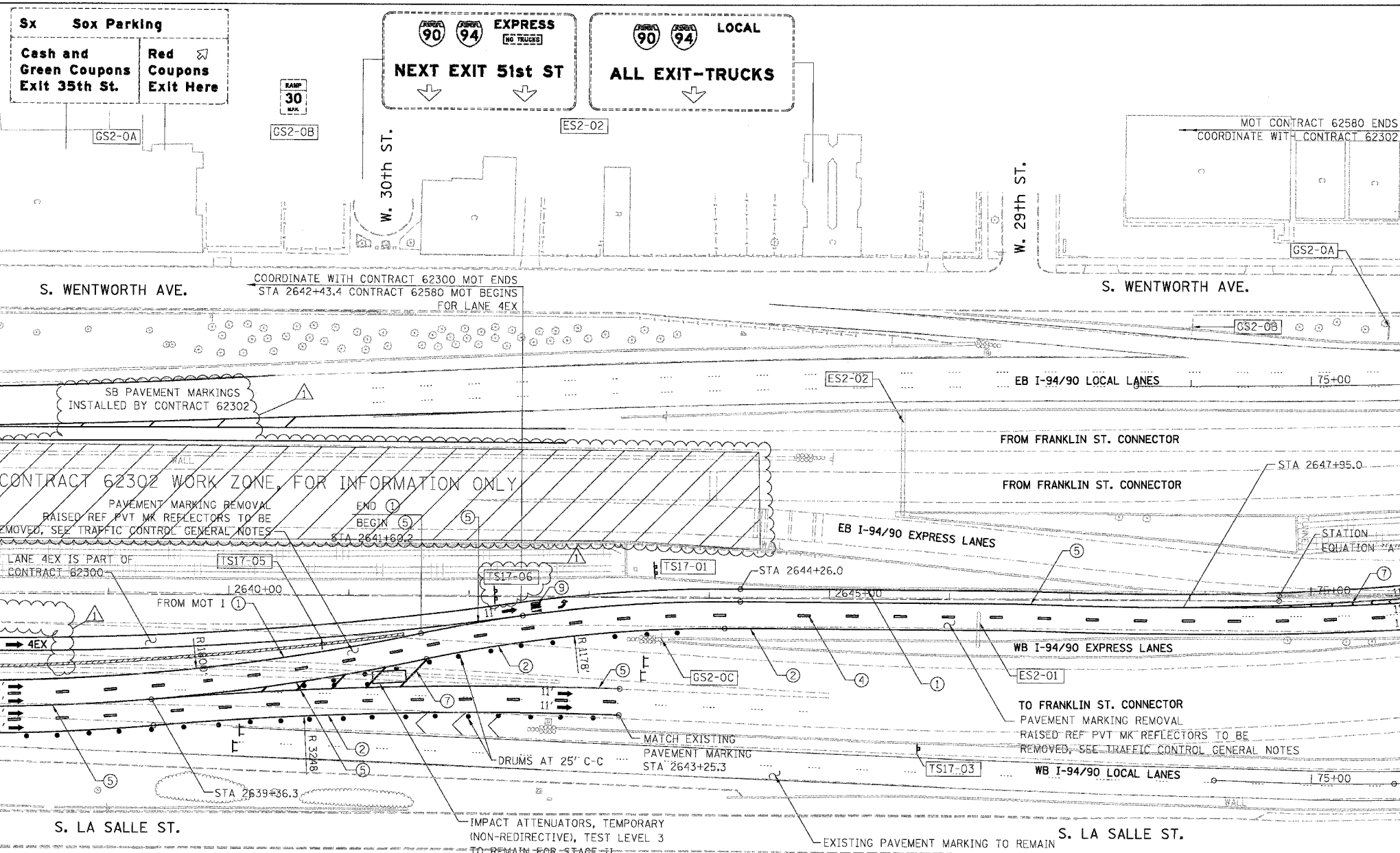


F.A.I.	SECTION	COUNTY	TOTAL SHEETS	SHEET NO.
94/90	2003-028F	COOK	419	49
STA.	TO STA.			
FED. ROAD DIST. NO.	ILLINOIS	FED. AID PROJECT		
62580				



LEGEND

- WORK ZONE
- DIRECTION OF TRAFFIC
- DRUM OR BARRICADE TYPE II WITH STEADY BURN LIGHT
- IMPACT ATTENUATORS, TEMPORARY (NON-REDIRECTIVE), TEST LEVEL 3
- BARRICADE TYPE III
- TEMPORARY CONCRETE BARRIER
- LINE 4" (YELLOW EDGE LINE)
- LINE 4" (WHITE EDGE LINE)
- LINE 4" (SKIP DASH, 6' SKIP - 2' DASH, WHITE)
- LINE 5" (SKIP DASH, 30' SKIP - 10' DASH, WHITE)
- LINE 8" (WHITE LINE)
- LINE 8" (SKIP DASH, 12' SKIP - 3' DASH, WHITE)
- LINE 12" (DIAGONAL, 30' C-C)
- LINE 12" (DIAGONAL, 500' C-C)
- LETTERS AND SYMBOLS
- EXISTING OVERHEAD OR CANTILEVER SIGNS
- EXISTING POST MOUNTED SIGNS
- TEMPORARY SIGNS

TEMPORARY INFORMATION SIGNING

NO TRUCKS EXPRESS LANE NEXT EXIT
 * TEMPORARY SIGN, MOUNTED ON 47TH ST BRIDGE UNDER CONTRACT 62300, STAGE 2.
 CONTRACT 62580 NEED TO COORDINATE WITH CONTRACT 62300 FOR THE NEXT EXIT OPEN UNDER THIS CONTRACT DURING CORRESPONDING STAGE

Wisconsin RIGHT 2 LANES
 W2-1115(0)-3618

EXIT 53C
 FROM STAGE I [GS2-0C]

SPEED LIMIT 45
 R2-1106-3618

TEMPORARY INFORMATION SIGNING
 REMOVE AT END OF STAGE IIB

TS17-02

TS17-01
 REMOVE AT END OF STAGE IIB

TS17-03
 FOR I-55 SOUTH DETOUR SEE SHEET DTR-02

STAY IN YOUR LANE
 TS17-06
 TEMPORARY INFORMATION SIGNING REMOVE AT END OF STAGE IIB

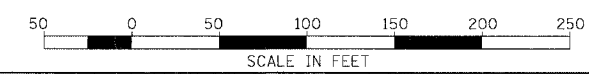
W4-3L (MODIFIED)
 TS17-05
 INCLUDED IN "TRAFFIC CONTROL AND PROTECTION "EXPRESSWAYS" REMOVE AT END OF STAGE IIB

STATION EQUATION "A"
 Sta 2648+74.34 BK
 Sta 74+73.48 AH

NOTE:
 WB I-94/90 TEMPORARY PAVEMENT MARKINGS INSTALLED IN STAGE IIA TO REMAIN TO END OF STAGE IIB, UNLESS OTHERWISE SPECIFIED

NOTE:
 ALL PAVEMENT MARKINGS ON THIS SHEET WILL BE PAVEMENT MARKING TAPE, TYPE III, UNLESS OTHERWISE NOTED.

BOWMAN, BARRETT & ASSOCIATES INC
 CONSULTING ENGINEERS
 Chicago, Illinois
 312.228.0100
 www.bbancinc.com



REVISIONS	
NAME	DATE
ADDENDUM 1	9/6/05

MOT-21

ILLINOIS DEPARTMENT OF TRANSPORTATION
 F.A.I. 94/90 (DAN RYAN EXPRESSWAY)
 NB DAN RYAN ELEVATED BRIDGE
 REPAIR FROM 15TH TO 28TH STREETS
 MAINTENANCE OF TRAFFIC PLAN - STAGE IIA
 STA. 2638+00 TO STA. 75+94

SCALE: 1"=50'
 DATE: 8/12/2005

DRAWN BY: RA
 CHECKED BY: RS

11660-cad/civil/US/STATE/94/90-33-mat02-49n

11/06/05 RA

9/12/2005