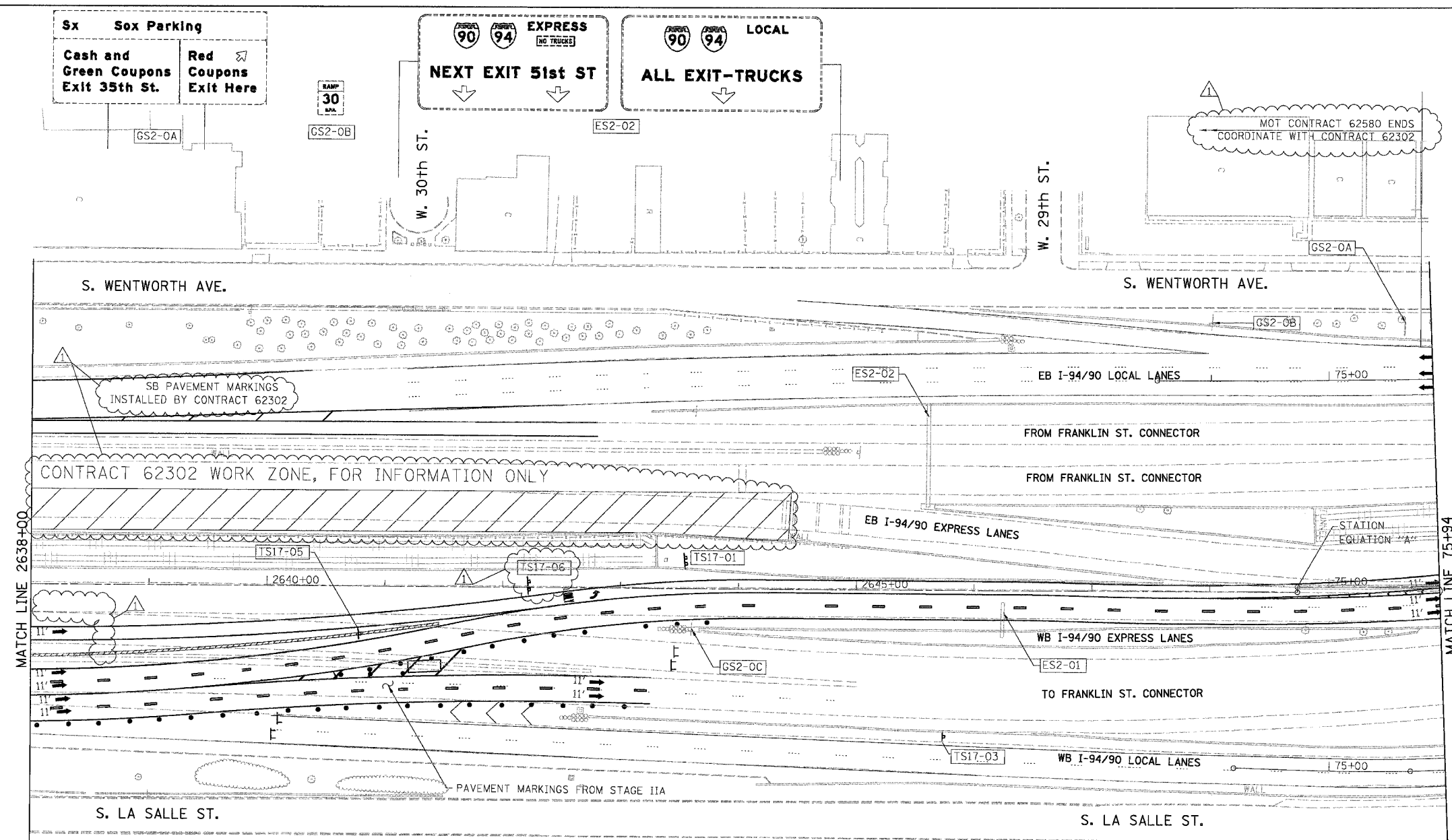


F.A.I.	SECTION	COUNTY	TOTAL SHEETS	SHEET NO.
94/90	2003-028F	COOK	419	64
STA.		TO STA.		
FED. ROAD DIST. NO.	ILLINOIS	FED. AID PROJECT		
62580				



- LEGEND**
- WORK ZONE
  - DIRECTION OF TRAFFIC
  - DRUM OR BARRICADE TYPE II WITH STEADY BURN LIGHT
  - IMPACT ATTENUATORS, TEMPORARY (NON-REDIRECTIVE), TEST LEVEL 3
  - BARRICADE TYPE III
  - TEMPORARY CONCRETE BARRIER
  - LINE 4" (YELLOW EDGE LINE)
  - LINE 4" (WHITE EDGE LINE)
  - LINE 4" (SKIP DASH, 6' SKIP - 2' DASH, WHITE)
  - LINE 5" (SKIP DASH, 30' SKIP - 10' DASH, WHITE)
  - LINE 8" (WHITE LINE)
  - LINE 8" (SKIP DASH, 12' SKIP - 3' DASH, WHITE)
  - LINE 12" (DIAGONAL, 30' C-C)
  - LINE 12" (DIAGONAL, 500' C-C)
  - LETTERS AND SYMBOLS
  - EXISTING OVERHEAD OR CANTILEVER SIGNS
  - EXISTING POST MOUNTED SIGNS
  - TEMPORARY SIGNS

**NO TRUCKS** \* TEMPORARY SIGN, MOUNTED ON 47TH ST BRIDGE UNDER CONTRACT 62300, STAGE 2.

**EXPRESS LANE NEXT EXIT** \* CONTRACT 62580 NEED TO COORDINATE WITH CONTRACT 62300 FOR THE NEXT EXIT OPEN UNDER THIS CONTRACT DURING CORRESPONDING STAGE

**NOTE:**  
WB I-94/90 TEMPORARY PAVEMENT MARKINGS INSTALLED IN STAGE IIA TO REMAIN TO END OF STAGE IIB, UNLESS OTHERWISE SPECIFIED

**Wisconsin RIGHT 2 LANES**

**EXIT 53C**  
FROM STAGE I  
GS2-0C

**TS17-02**  
REMOVE AT END OF STAGE IIB  
FROM STAGE IIA

**WORK ZONE SPEED LIMIT 45**  
R2-1106-3618  
ES2-01

**TEMPORARY INFORMATION SIGNING**

**NEXT EXIT Monroe St**  
REMOVE AT END OF STAGE IIB  
FROM STAGE IIA  
TS17-01

**STATION EQUATION "A"**  
Sta 2648+74.34 BK  
Sta 74+73.48 AH

**W4-3L (MODIFIED)**  
FROM STAGE IIA  
INCLUDED IN "TRAFFIC CONTROL AND PROTECTION "EXPRESSWAYS" REMOVE AT END OF STAGE IIB

**TS17-05**

**STAY IN YOUR LANE**  
FROM STAGE IIA  
TEMPORARY INFORMATION SIGNING REMOVE AT END OF STAGE IIB  
TS17-06

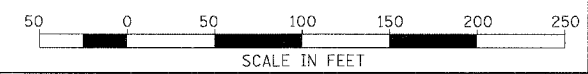
**NOTE:**  
ALL PAVEMENT MARKINGS ON THIS SHEET WILL BE PAVEMENT MARKING TAPE, TYPE III, UNLESS OTHERWISE NOTED.

MOT-36

REVISIONS	
NAME	DATE
ADDENDUM 1	9/6/05

ILLINOIS DEPARTMENT OF TRANSPORTATION  
F.A.I. 94/90 (DAN RYAN EXPRESSWAY)  
NB DAN RYAN ELEVATED BRIDGE  
REPAIR FROM 15TH TO 28TH STREETS  
MAINTENANCE OF TRAFFIC PLAN - STAGE IIB  
STA. 2638+00 TO STA. 75+94

SCALE: 1"=50'  
DATE: 8/12/2005  
DRAWN BY: RA  
CHECKED BY: RS



BOWMAN, BARRETT & ASSOCIATES INC.  
CONSULTING ENGINEERS  
Chicago, Illinois  
312.228.0100  
www.bbainc.com

MOT-36 9/12/2005