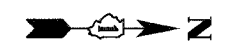


RAMP "D" CLOSED

(NB I-55 EXIT TO WB I-94/90)

F.A.I.	SECTION	COUNTY	TOTAL SHEETS	SHEET NO.
94/90	2003-028F	COOK	419	93
STA.		TO STA.		
FED. ROAD DIST. NO.	ILLINOIS	FED. AID PROJECT		
62580				



M6-2 (24x12)		
M6-3 (24x12)		
M3-4 (24x12)	WEST	
M4-8 (30x15)	DETOUR	
M3-3 (24x12)	SOUTH	
M1-1 (24x24)		
(36x24)	TRUCKS USE PULASKI AVE	
(36x12)	NO TRUCKS	
M4-4 (24x12)	TRUCKS	

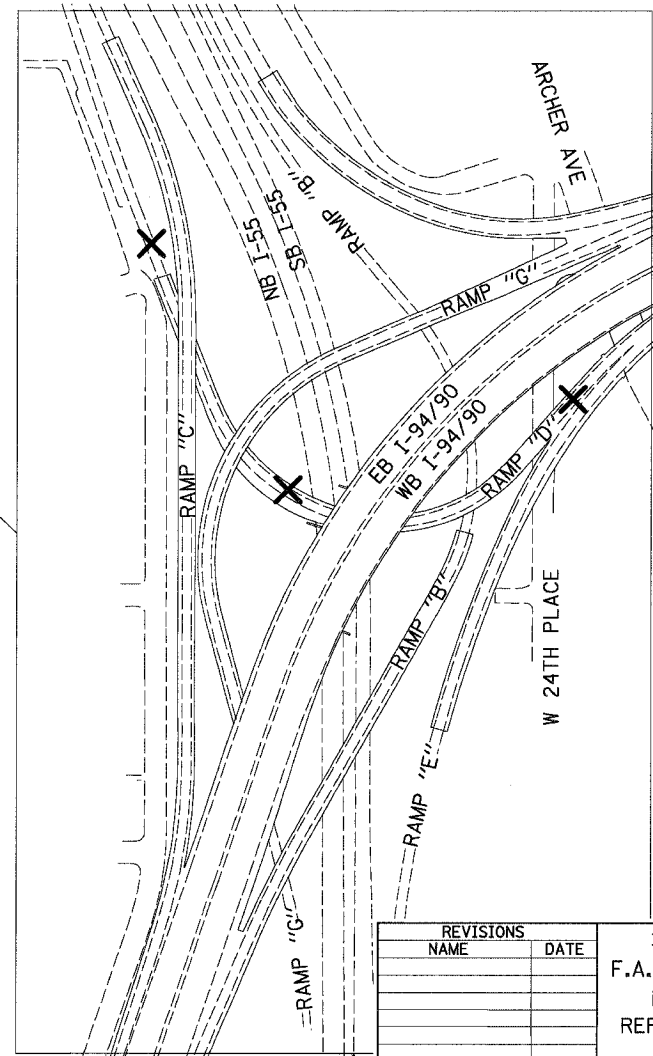
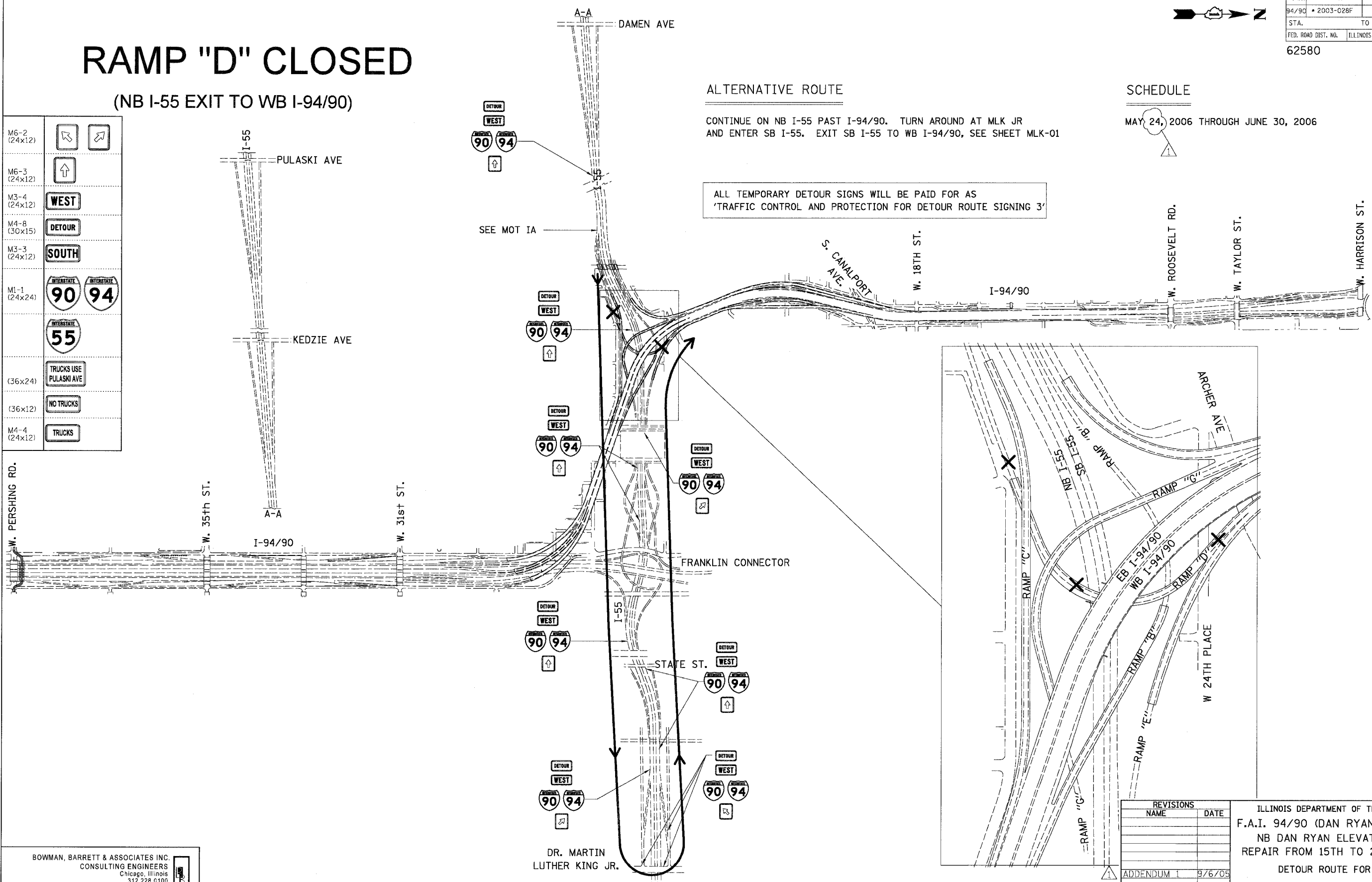
ALTERNATIVE ROUTE

CONTINUE ON NB I-55 PAST I-94/90. TURN AROUND AT MLK JR AND ENTER SB I-55. EXIT SB I-55 TO WB I-94/90, SEE SHEET MLK-01

SCHEDULE

MAY 24, 2006 THROUGH JUNE 30, 2006

ALL TEMPORARY DETOUR SIGNS WILL BE PAID FOR AS 'TRAFFIC CONTROL AND PROTECTION FOR DETOUR ROUTE SIGNING 3'



BOWMAN, BARRETT & ASSOCIATES INC.
CONSULTING ENGINEERS
Chicago, Illinois
312.228.0100
www.bbainc.com

DR. MARTIN LUTHER KING JR.

REVISIONS	
NAME	DATE
ADDENDUM 1	9/6/05

DTR-03
ILLINOIS DEPARTMENT OF TRANSPORTATION
F.A.I. 94/90 (DAN RYAN EXPRESSWAY)
NB DAN RYAN ELEVATED BRIDGE
REPAIR FROM 15TH TO 28TH STREETS
DETOUR ROUTE FOR RAMP D
SCALE: =NTS
DATE: 8/12/2005
DRAWN BY: RA
CHECKED BY: RS

11/02/2005 11:00:27 AM