

F.A.I.	SECTION	COUNTY	TOTAL SHEETS	SHEET NO.
94/90	2003-028F	COOK	419	14
STA.		TO STA.		
FED. ROAD DIST. NO.		ILLINOIS	FED. AID PROJECT	
62580				

**CURVE HL-1  
SPIRAL SEGMENT**  
 DELTA=71° 15' 49.43' LS=150.00 FT DELTA(S)=03° 22' 30.00"  
 X=149.95 FT Y=02.94 FT P=0.74 FT  
 K=74.99 FT ST=50.02 FT LT=100.02 FT  
 LC =149.98 FT TS=988.37 FT ES=294.27 FT

**CIRCULAR SEGMENT**  
 TS Sta 74+73.48  
 N= 1885718.50  
 E=1175669.10  
 SC Sta 76+23.48  
 N=1885868.31  
 E=1175662.09  
 CS Sta 90+57.12  
 N=1886951.08  
 E=1174840.67  
 ST Sta 92+07.12  
 N=1886998.19  
 E=1174698.28

**CURVE HL-1**  
 PI STA. = 84+27.05  
 N:1886668.91  
 E:1175593.06  
 Δ = 64° 30' 49" (LT)  
 D = 4° 30' 00"  
 R = 1,273.24'  
 T = 803.57'  
 L = 1,433.64'  
 E = 232.37'  
 e = N/A  
 T.R. = N/A  
 S.E. RUN = 0.053 FT/FT

**CURVE EHB-1**  
 PI STA. = 75+08.28  
 N:1885747.83  
 E:1175493.82  
 Δ = 1° 37' 12" (LT)  
 D = 0° 31' 33"  
 R = 10,896.14'  
 T = 154.06'  
 L = 308.10'  
 E = 1.09'  
 e = N/A  
 T.R. = N/A  
 S.E. RUN = 0.053 FT/FT  
 P.C. STA. = 73+54.22  
 N=1885593.83  
 E=1175498.00  
 P.T. STA. = 76+62.32  
 N=1885901.66  
 E=1175485.30

**CURVE EHB-2**  
 PI STA. = 78+55.79  
 N:1886094.82  
 E:1175474.59  
 Δ = 19° 50' 45" (LT)  
 D = 5° 10' 51"  
 R = 1,105.89'  
 T = 193.46'  
 L = 383.05'  
 E = 16.79'  
 e = N/A  
 T.R. = N/A  
 S.E. RUN = 0.053 FT/FT  
 P.C. STA. = 76+62.32  
 N=1885901.66  
 E=1175485.30  
 P.T. STA. = 80+45.37  
 N=1886272.88  
 E=1175398.93

**CURVE EHB-3**  
 PI STA. = 81+96.84  
 N:1886412.29  
 E:1175339.70  
 Δ = 13° 28' 11" (LT)  
 D = 4° 28' 01"  
 R = 1,282.65'  
 T = 151.47'  
 L = 301.54'  
 E = 8.91'  
 e = N/A  
 T.R. = N/A  
 S.E. RUN = 0.053 FT/FT  
 P.C. STA. = 80+45.37  
 N=1886272.88  
 E=1175398.93  
 P.T. STA. = 83+46.91  
 N=1886534.07  
 E=1175249.63

**CURVE EHB-4**  
 PI STA. = 87+56.94  
 N:1886863.72  
 E:1175005.80  
 Δ = 36° 19' 40" (LT)  
 D = 4° 35' 04"  
 R = 1,249.78'  
 T = 410.03'  
 L = 792.41'  
 E = 65.54'  
 e = N/A  
 T.R. = N/A  
 S.E. RUN = 0.053 FT/FT  
 P.C. STA. = 83+46.91  
 N=1886534.07  
 E=1175249.63  
 P.T. STA. = 91+39.32  
 N=1886984.86  
 E=1174614.07

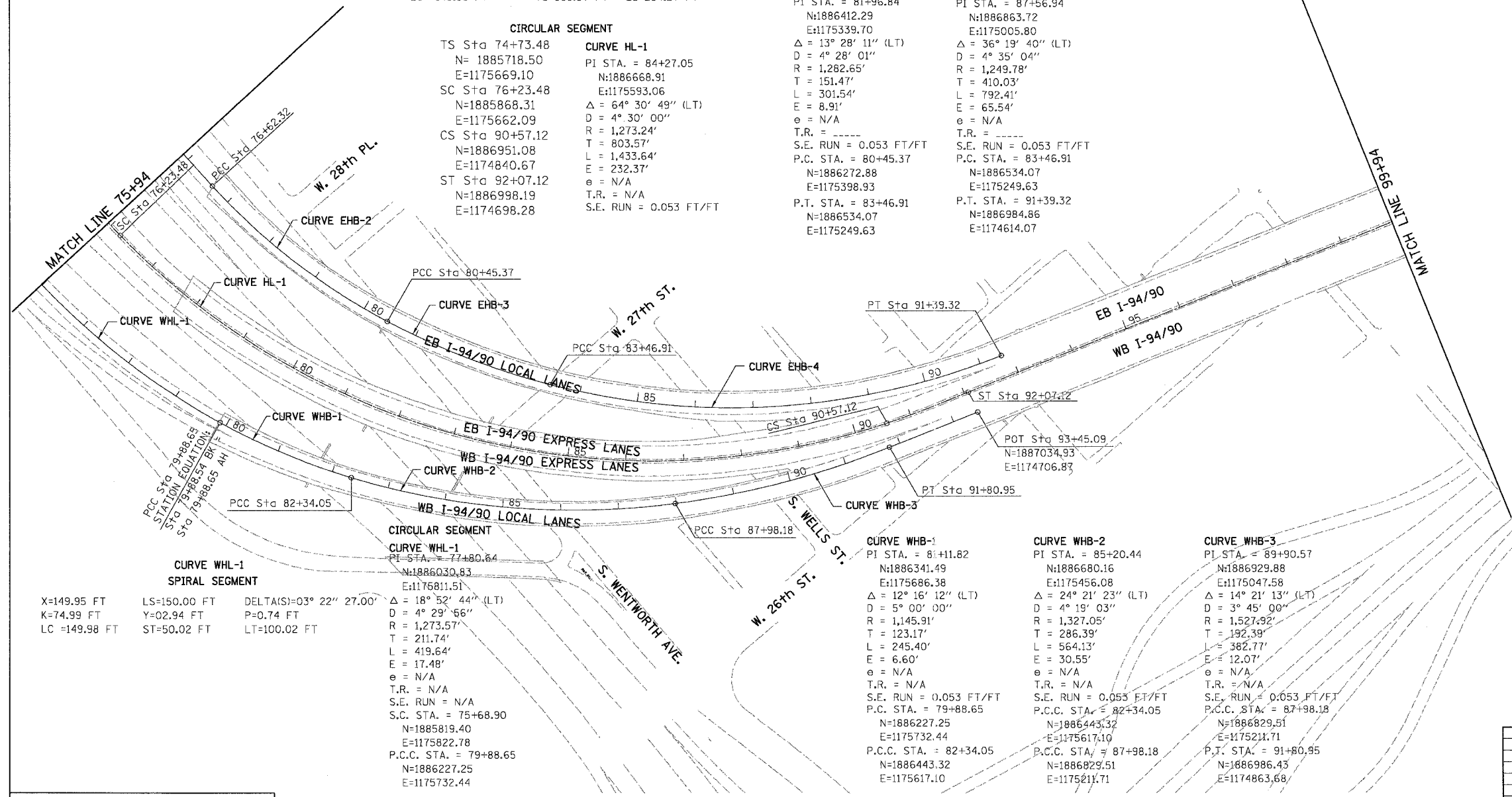
**CURVE WHL-1  
SPIRAL SEGMENT**  
 X=149.95 FT LS=150.00 FT DELTA(S)=03° 22' 27.00"  
 K=74.99 FT Y=02.94 FT P=0.74 FT  
 LC =149.98 FT ST=50.02 FT LT=100.02 FT

**CIRCULAR SEGMENT**  
 PI STA. = 77+80.84  
 N:1886030.83  
 E:1176811.51  
 Δ = 18° 52' 44" (LT)  
 D = 4° 29' 56"  
 R = 1,273.57'  
 T = 211.74'  
 L = 419.64'  
 E = 17.48'  
 e = N/A  
 T.R. = N/A  
 S.E. RUN = N/A  
 S.C. STA. = 75+68.90  
 N=1885819.40  
 E=1175822.78  
 P.C.C. STA. = 79+88.65  
 N=1886227.25  
 E=1175732.44

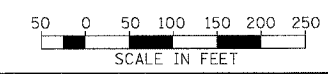
**CURVE WHB-1**  
 PI STA. = 81+11.82  
 N:1886341.49  
 E:1175686.38  
 Δ = 12° 16' 12" (LT)  
 D = 5° 00' 00"  
 R = 1,145.91'  
 T = 123.17'  
 L = 245.40'  
 E = 6.60'  
 e = N/A  
 T.R. = N/A  
 S.E. RUN = 0.053 FT/FT  
 P.C. STA. = 79+88.65  
 N=1886227.25  
 E=1175732.44  
 P.C.C. STA. = 82+34.05  
 N=1886443.32  
 E=1175617.10

**CURVE WHB-2**  
 PI STA. = 85+20.44  
 N:1886680.16  
 E:1175456.08  
 Δ = 24° 21' 23" (LT)  
 D = 4° 19' 03"  
 R = 1,327.05'  
 T = 286.39'  
 L = 564.13'  
 E = 30.55'  
 e = N/A  
 T.R. = N/A  
 S.E. RUN = 0.053 FT/FT  
 P.C.C. STA. = 82+34.05  
 N=1886443.32  
 E=1175617.10  
 P.C.C. STA. = 87+98.18  
 N=1886829.51  
 E=1175211.71

**CURVE WHB-3**  
 PI STA. = 89+90.57  
 N:1886929.88  
 E:1175047.58  
 Δ = 14° 21' 13" (LT)  
 D = 3° 45' 00"  
 R = 1,527.92'  
 T = 192.39'  
 L = 382.77'  
 E = 12.07'  
 e = N/A  
 T.R. = N/A  
 S.E. RUN = 0.053 FT/FT  
 P.C.C. STA. = 87+98.18  
 N=1886829.51  
 E=1175211.71  
 P.T. STA. = 91+80.95  
 N=1886986.43  
 E=1174863.68



BOWMAN, BARRETT & ASSOCIATES INC.  
 CONSULTING ENGINEERS  
 Chicago, Illinois  
 312.228.0100  
 www.bbainc.com



REVISIONS	
NAME	DATE

ILLINOIS DEPARTMENT OF TRANSPORTATION  
 F.A.I. 94/90 (DAN RYAN EXPRESSWAY)  
 NB DAN RYAN ELEVATED BRIDGE  
 REPAIR FROM 15TH TO 28TH STREETS  
 ALIGNMENT PLAN  
 STA. 75+94 TO STA. 99+94

SCALE: 1"=100'  
 DATE: 7/22/2005

DRAWN BY: RA  
 CHECKED BY: RS

CAL02

7/21/2005 11:26:32 AM