

F.A.I.	SECTION	COUNTY	TOTAL SHEETS	SHEET NO.
94/90	2003-028F	COOK	419	18
STA.		TO STA.		
FED. ROAD DIST. NO.		ILLINOIS FED. AID PROJECT		
62580				

CURVE EBLCL4
 PI STA. = 154+95.33
 N:1891257.72
 E:1171909.56
 $\Delta = 15^\circ 17' 12''$ (LT)
 D = 3° 00' 00"
 R = 1,909.86'
 T = 256.30'
 L = 509.56'
 E = 17.12'
 e = -----
 T.R. = -----
 S.E. RUN = -----
 P.C. STA. = 152+39.03
 P.T. STA. = 157+48.58

CURVE HL-4
SPIRAL SEGMENT
 DELTA=13° 40' 00.25" LS=150.00 FT DELTA(S)=00° 15' 48.00"
 X=149.98 FT Y=01.96 FT P=0.49 FT
 K=74.99 FT ST=50.01 FT LT=100.01 FT
 LC =149.99 FT TS=303.92 FT ES=14.16 FT

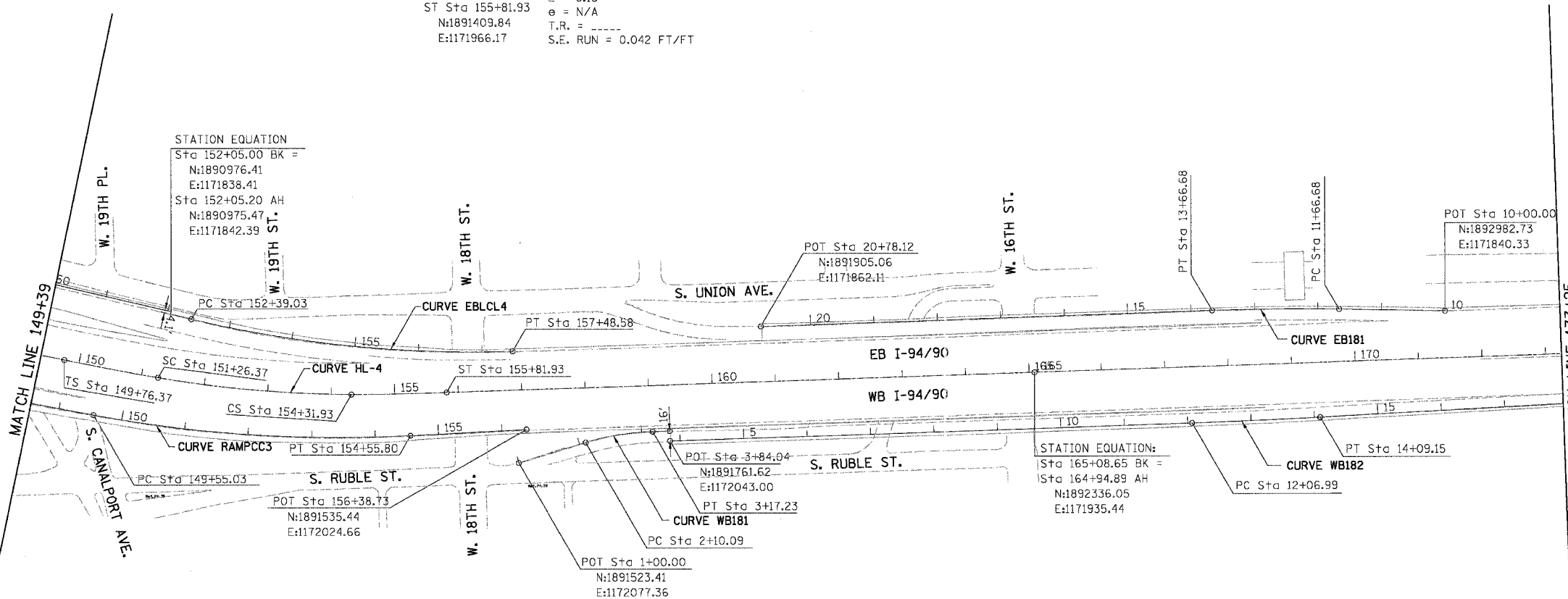
CURVE HL-4
CIRCULAR SEGMENT
 TS Sta 149+76.37 PI STA. = 152+79.48
 N:1890808.55 E:1171914.27 N:1891106.78
 SC Sta 151+26.37 E:1171968.24
 N:1890955.78 $\Delta = 9^\circ 10' 00''$ (LT)
 E:1171942.93 D = 3° 00' 00"
 CS Sta 154+31.93 R = 1,909.86'
 N:1891259.88 T = 153.11'
 E:1171969.18 L = 305.56'
 ST Sta 155+81.93 E = 6.13'
 N:1891409.84 e = N/A
 E:1171966.17 T.R. = -----
 S.E. RUN = 0.042 FT/FT

STATION EQUATION

Sta 152+05.00 BK =
 N:1890976.41
 E:1171838.41
 Sta 152+05.20 AH
 N:1890975.47
 E:1171842.39

STATION EQUATION:

Sta 165+08.65 BK =
 Sta 164+94.89 AH
 N:1892336.05
 E:1171935.44



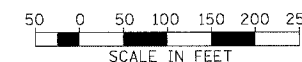
CURVE RAMPCC3
 PI STA. = 152+06.61
 N:1891101.54
 E:1172047.75
 $\Delta = 13^\circ 40' 00''$ (LT)
 D = 2° 43' 45"
 R = 2,099.39'
 T = 251.58'
 L = 500.76'
 E = 15.02'
 e = N/A
 T.R. = -----
 S.E. RUN = 0.042 FT/FT
 P.C. STA. = 149+55.03
 N:1890854.28
 E:1172001.38
 P.T. STA. = 154+55.80
 N:1891352.77
 E:1172034.38

CURVE WB181
 PI STA. = 2+63.97
 N:1891680.30
 E:1172029.69
 $\Delta = 15^\circ 00' 00''$ (RT)
 D = 14° 00' 00"
 R = 409.26'
 T = 53.88'
 L = 107.14'
 E = 3.53'
 e = N/A
 T.R. = -----
 S.E. RUN = 0.038 FT/FT
 P.C. STA. = 2+10.09
 N:1891628.75
 E:1172045.36
 P.T. STA. = 3+17.23
 N:1891734.15
 E:1172027.91

CURVE WB182
 PI STA. = 13+08.08
 N:1892685.14
 E:1172012.37
 $\Delta = 1^\circ 08' 44''$ (LT)
 D = 0° 34' 00"
 R = 10,110.88'
 T = 101.08'
 L = 202.16'
 E = 0.51'
 e = N/A
 T.R. = N/A
 S.E. RUN = N/A
 P.C. STA. = 12+06.99
 N:1892584.11
 E:1172015.72
 P.T. STA. = 14+09.15
 N:1892786.08
 E:1172007.00

CURVE EB181
 PI STA. = 12+66.71
 N:1892716.07
 E:1171835.20
 $\Delta = 3^\circ 00' 00''$ (LT)
 D = 1° 30' 00"
 R = 3,819.72'
 T = 100.02'
 L = 200.00'
 E = 1.31'
 e = N/A
 T.R. = N/A
 S.E. RUN = N/A
 P.C. STA. = 11+66.68
 N:1892816.08
 E:1171837.13
 P.T. STA. = 13+66.68
 N:1892616.11
 E:1171838.52

BOWMAN, BARRETT & ASSOCIATES INC.
 CONSULTING ENGINEERS
 Chicago, Illinois
 312.228.0100
 www.bbainc.com



REVISIONS	
NAME	DATE

ILLINOIS DEPARTMENT OF TRANSPORTATION
 F.A.I. 94/90 (DAN RYAN EXPRESSWAY)
 NB DAN RYAN ELEVATED BRIDGE
 REPAIR FROM 15TH TO 28TH STREETS
 ALIGNMENT PLAN
 STA. 149+39 TO STA. 173+25
 SCALE: 1"=100'
 DATE: 7/22/2005
 DRAWN BY: RA
 CHECKED BY: RS

CAL06

7/21/2005