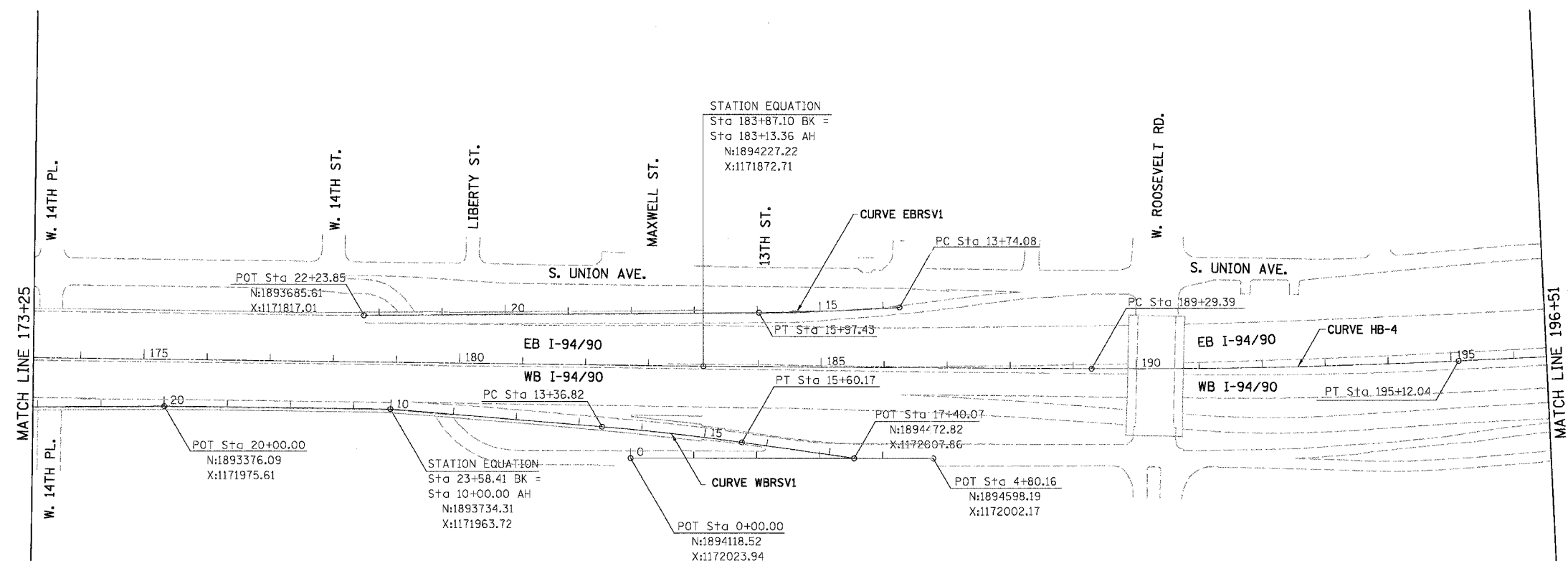
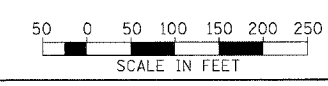


F.A.I.	SECTION	COUNTY	TOTAL SHEETS	SHEET NO.
94/90	2003-028F	COOK	419	19
STA.		TO STA.		
FED. ROAD DIST. NO.		ILLINOIS FED. AID PROJECT		
62580				



<p><b>CURVE WBRVS1</b></p> <p>PI STA. = 14+48.53  N:1894182.53  E:1171980.16  <math>\Delta = 3^\circ 21' 01''</math> (RT)  D = 1° 30' 00"  R = 3,819.72'  T = 111.71'  L = 223.35'  E = 1.63'  e = N/A  T.R. = N/A  S.E. RUN = c  P.C. STA. = 13+36.82  N:1894070.90  X:1171976.07  P.T. STA. = 15+60.17  N:1894293.74  X:1171990.77</p>	<p><b>CURVE EBRVS1</b></p> <p>PI STA. = 14+85.79  N:1894422.70  E:1171777.79  <math>\Delta = 3^\circ 21' 01''</math> (RT)  D = 1° 30' 00"  R = 3,819.72'  T = 111.71'  L = 223.35'  E = 1.63'  e = N/A  T.R. = N/A  S.E. RUN = N/A  P.C. STA. = 13+74.08  N:1894533.71  X:1171765.34  P.T. STA. = 15+97.43  N:1894311.15  X:1171783.72</p>	<p><b>CURVE HB-4</b></p> <p>PI STA. = 192+20.79  N:1895133.96  E:1171837.41  <math>\Delta = 3^\circ 04' 26''</math> (LT)  D = 0° 31' 39"  R = 10,860.00'  T = 291.40'  L = 582.65'  E = 3.91'  e = N/A  T.R. = N/A  S.E. RUN = N/A  P.C. STA. = 189+29.39  N:1894842.79  X:1171848.75  P.T. STA. = 195+12.04  N:1895424.11  X:1171810.48</p>
--	--	--

BOWMAN, BARRETT & ASSOCIATES INC.  
CONSULTING ENGINEERS  
Chicago, Illinois  
312.228.0100  
www.bbainc.com



REVISIONS	
NAME	DATE

ILLINOIS DEPARTMENT OF TRANSPORTATION  
F.A.I. 94/90 (DAN RYAN EXPRESSWAY)  
NB DAN RYAN ELEVATED BRIDGE  
REPAIR FROM 15TH TO 28TH STREETS  
ALIGNMENT PLAN  
STA. 173+25 TO STA. 196+51

SCALE: 1"=100'  
DATE: 7/22/2005

DRAWN BY: RA  
CHECKED BY: RS

CALOT  
7/21/2005