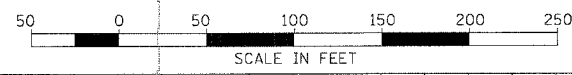
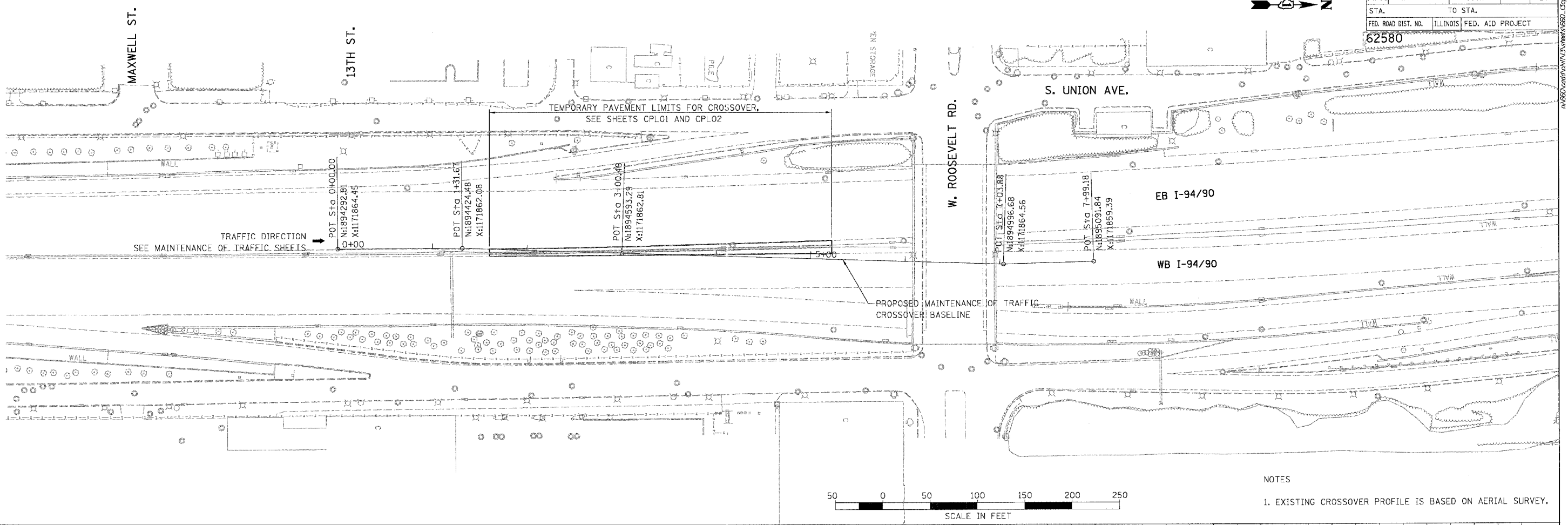
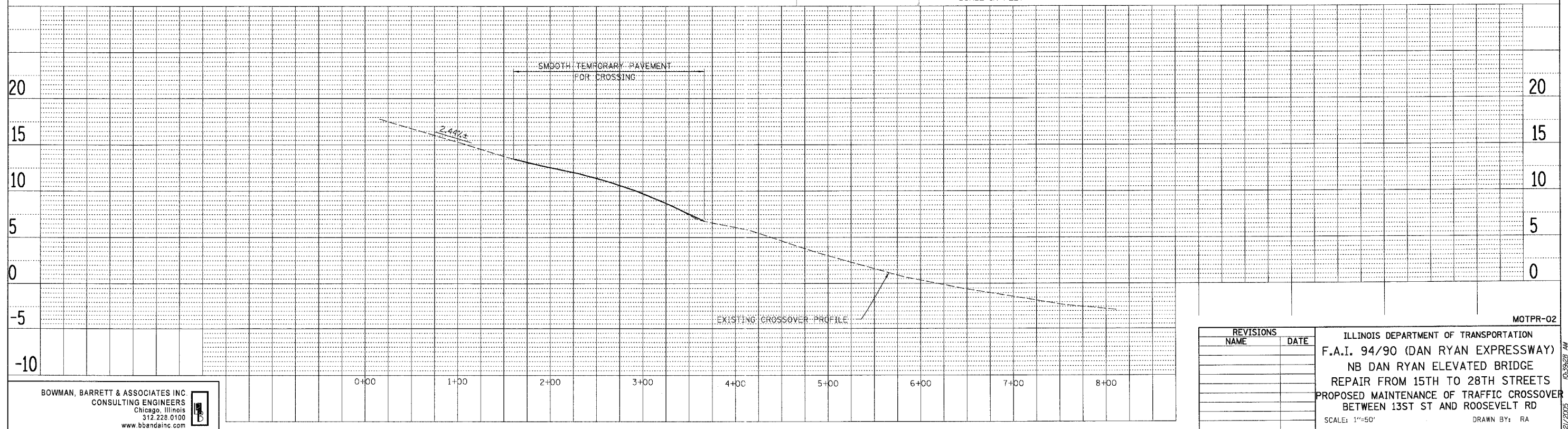


F.A.I.	SECTION	COUNTY	TOTAL SHEETS	SHEET NO.
94/90	2003-028F	COOK	419	24
STA.	TO STA.			
FED. ROAD DIST. NO.		ILLINOIS	FED. AID PROJECT	
62580				



NOTES
 1. EXISTING CROSSOVER PROFILE IS BASED ON AERIAL SURVEY.



PLAN	DATE
SURVEYED	BY
ALIGNED	BY
CHECKED	BY
NOTE BOOK	NO.
NO.	

PROFILE	DATE
SURVEYED	BY
ALIGNED	BY
CHECKED	BY
NOTE BOOK	NO.
NO.	

BOWMAN, BARRETT & ASSOCIATES INC.
 CONSULTING ENGINEERS
 Chicago, Illinois
 312.228.0100
 www.bbainc.com

REVISIONS		ILLINOIS DEPARTMENT OF TRANSPORTATION F.A.I. 94/90 (DAN RYAN EXPRESSWAY) NB DAN RYAN ELEVATED BRIDGE REPAIR FROM 15TH TO 28TH STREETS PROPOSED MAINTENANCE OF TRAFFIC CROSSOVER BETWEEN 13TH ST AND ROOSEVELT RD SCALE: 1"=50' DATE: 7/22/2005	DRAWN BY: RA CHECKED BY: RS
NAME	DATE		

10-39-28-2B AU 7/21/2005