

F.A.I.	SECTION	COUNTY	TOTAL SHEETS	SHEET NO.
94/90	2003-028F	COOK	419	27
STA.	TO STA.			
FED. ROAD DIST. NO.	ILLINOIS	FED. AID PROJECT		

62580

**LEGEND**

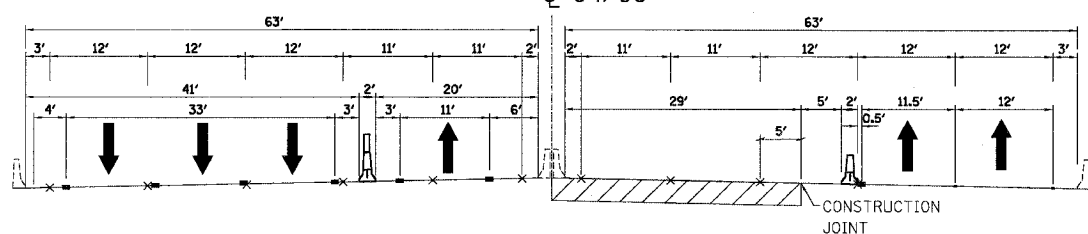
- TRAFFIC DIRECTION
- EXISTING PAVEMENT MARKING
- REMOVE EXISTING PAVEMENT MARKING
- RAISED REFLECTIVE PAVEMENT MARKING REMOVAL
- TEMPORARY PAVEMENT MARKING
- WORK ZONE
- TEMPORARY CONCRETE BARRIER
- TEMPORARY CONCRETE BARRIER WITH TEMPORARY PAVEMENT MARKING - LINE 6"
- TEMPORARY CONCRETE BARRIER WITH MODULAR GLARE SCREEN SYSTEM
- OVERLAYED PAVEMENT
- EXISTING BARRIER

**SECTION A-A**

SB TRAFFIC

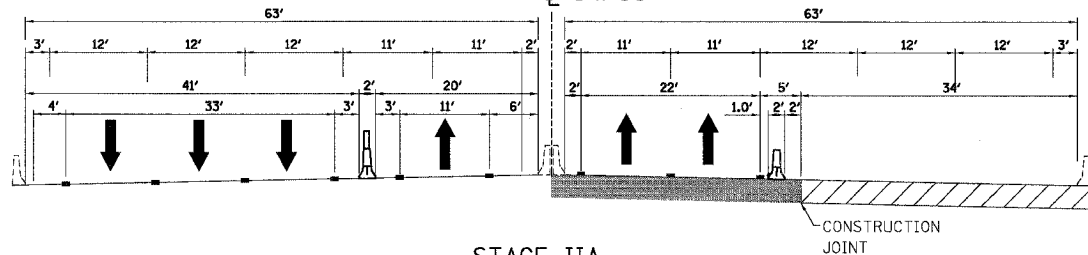
NB TRAFFIC

94/90



STAGE I  
LOOKING NORTH

94/90



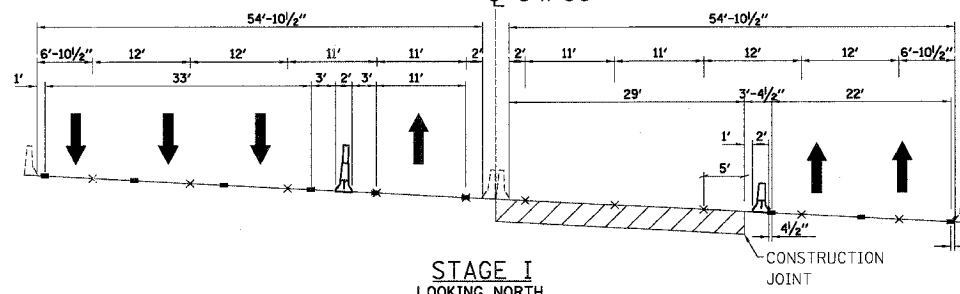
STAGE IIA  
LOOKING NORTH

**SECTION B-B**

SB TRAFFIC

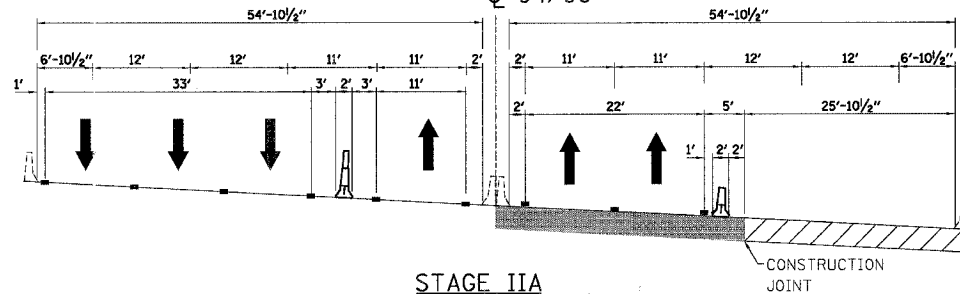
NB TRAFFIC

94/90



STAGE I  
LOOKING NORTH

94/90



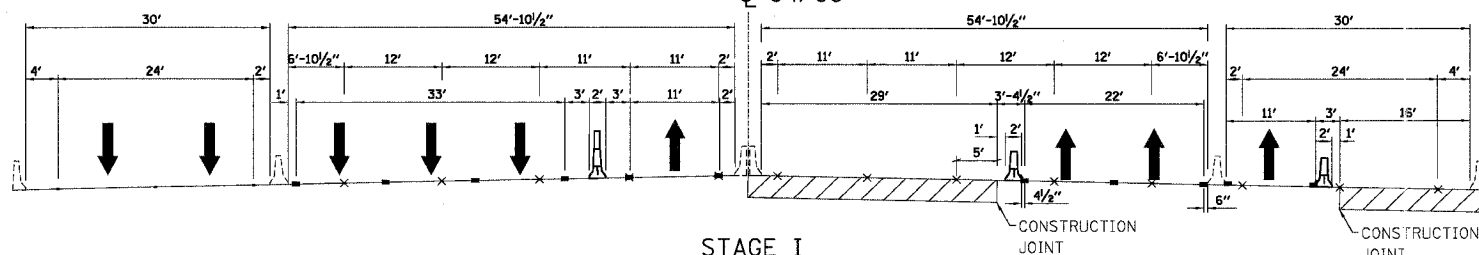
STAGE IIA  
LOOKING NORTH

**SECTION C-C**

SB TRAFFIC

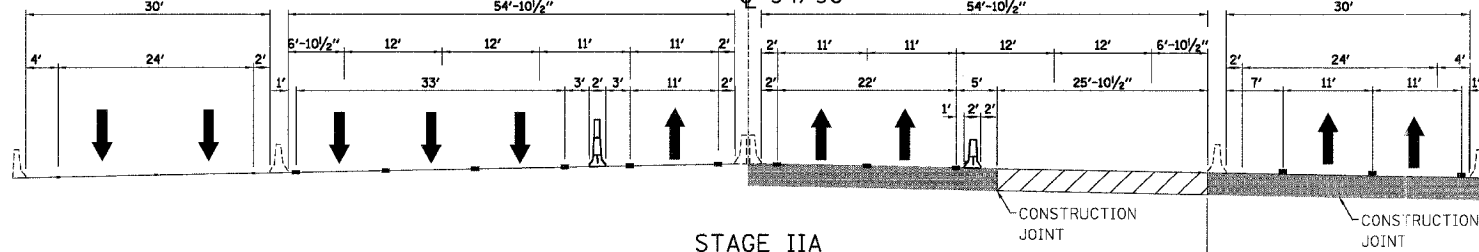
NB TRAFFIC

94/90



STAGE I  
LOOKING NORTH

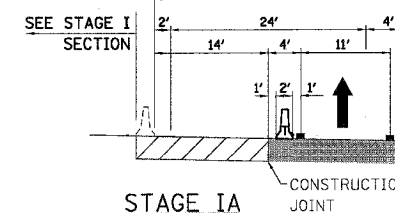
94/90



STAGE IIA  
LOOKING NORTH

SOUTH OF MAINLINE  
STATION 125+06

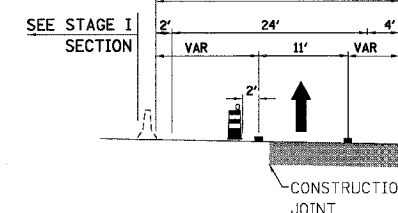
NB TRAFFIC



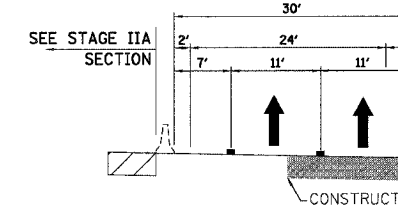
STAGE IA  
LOOKING NORTH  
SOUTH OF MAINLINE STATION 125+06

FOR CORRESPONDING SECTION  
SEE STAGE IIA TO THE LEFT

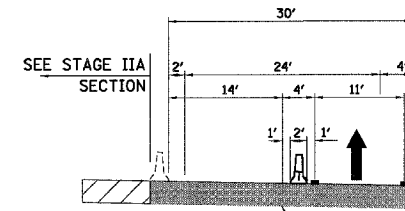
NB TRAFFIC



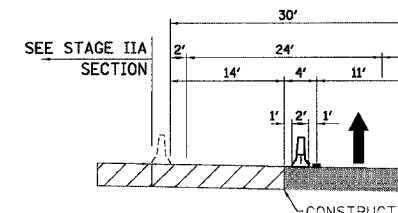
STAGE IA  
LOOKING NORTH  
NORTH OF MAINLINE STATION 125+06



STAGE IIA  
LOOKING NORTH  
NORTH OF MAINLINE STATION 125+06



STAGE IIB  
LOOKING NORTH  
SOUTH OF MAINLINE STATION 125+06



STAGE IIB  
LOOKING NORTH  
NORTH OF MAINLINE STATION 125+06

MTS-03

REVISIONS	
NAME	DATE

ILLINOIS DEPARTMENT OF TRANSPORTATION  
F.A.I. 94/90 (DAN RYAN EXPRESSWAY)  
NB DAN RYAN ELEVATED BRIDGE  
REPAIR FROM 15TH TO 28TH STREETS  
MAINTENANCE OF TRAFFIC PLAN  
GENERAL NOTES AND TYPICAL SECTIONS  
SCALE: =NTS  
DATE: 8/12/2005  
DRAWN BY: RA  
CHECKED BY: RS

BOWMAN, BARRETT & ASSOCIATES INC  
CONSULTING ENGINEERS  
Chicago, Illinois  
312.228.0100  
www.bbainc.com



8/17/2005 12:35:39 AM