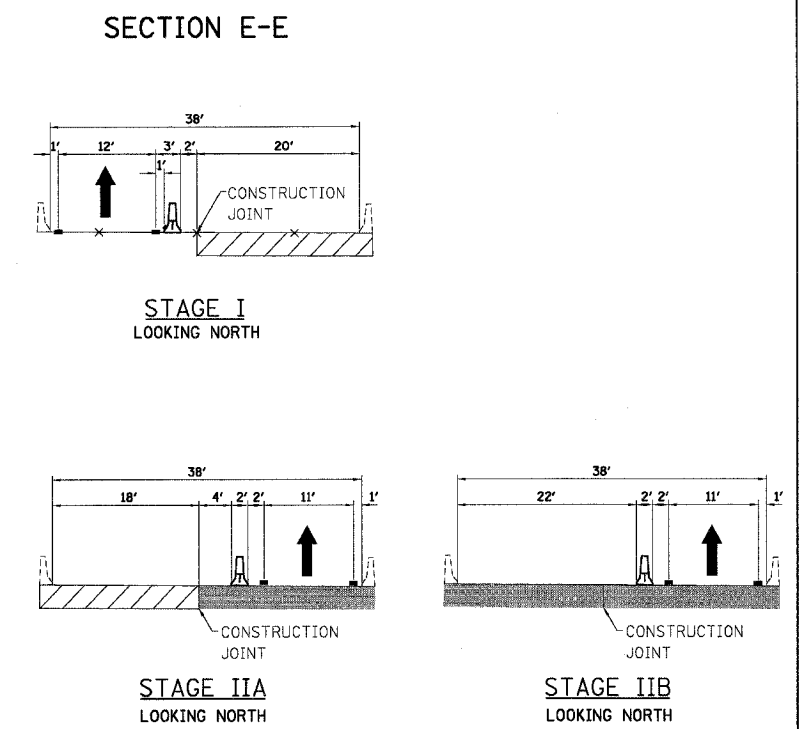
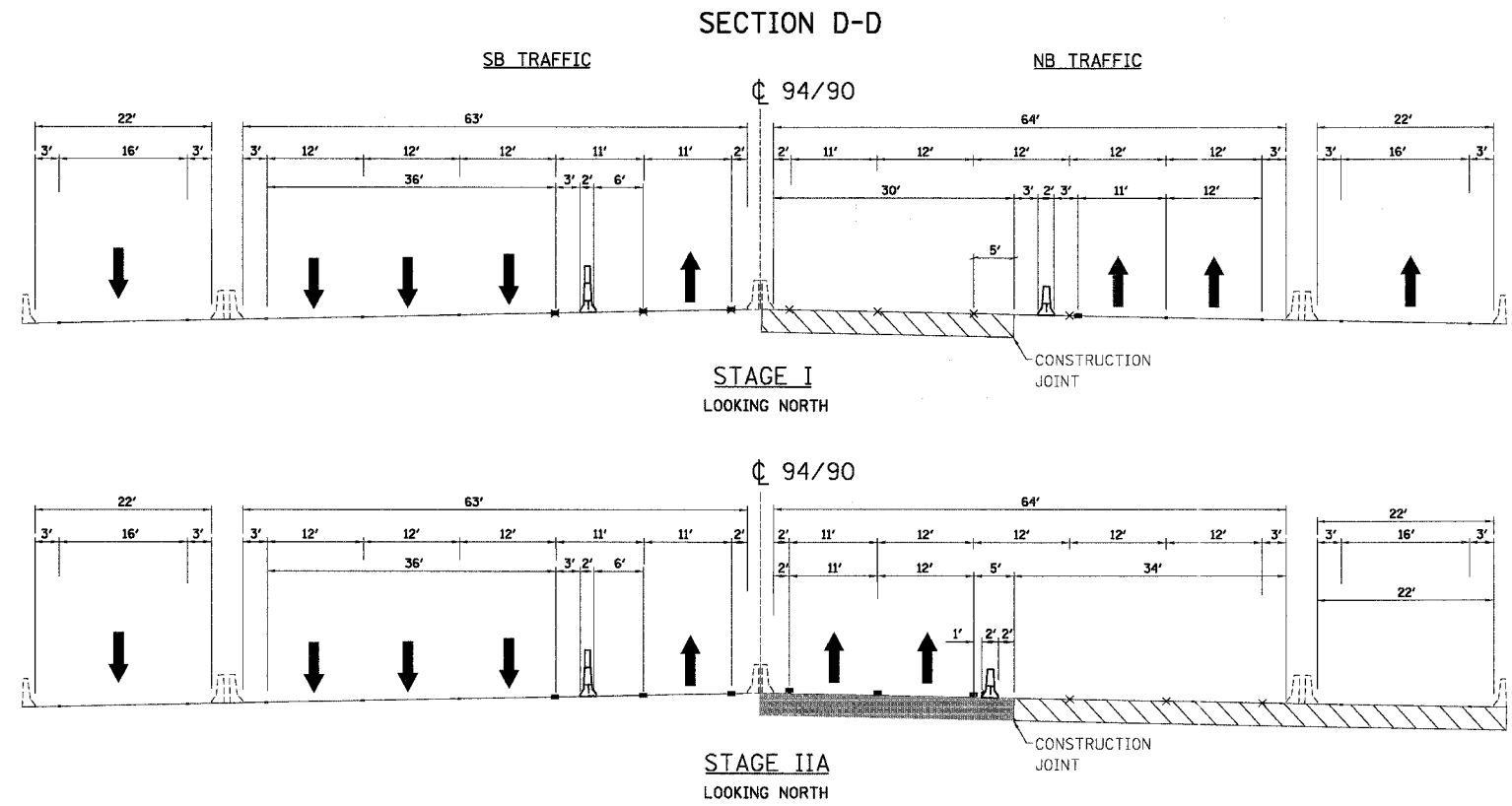
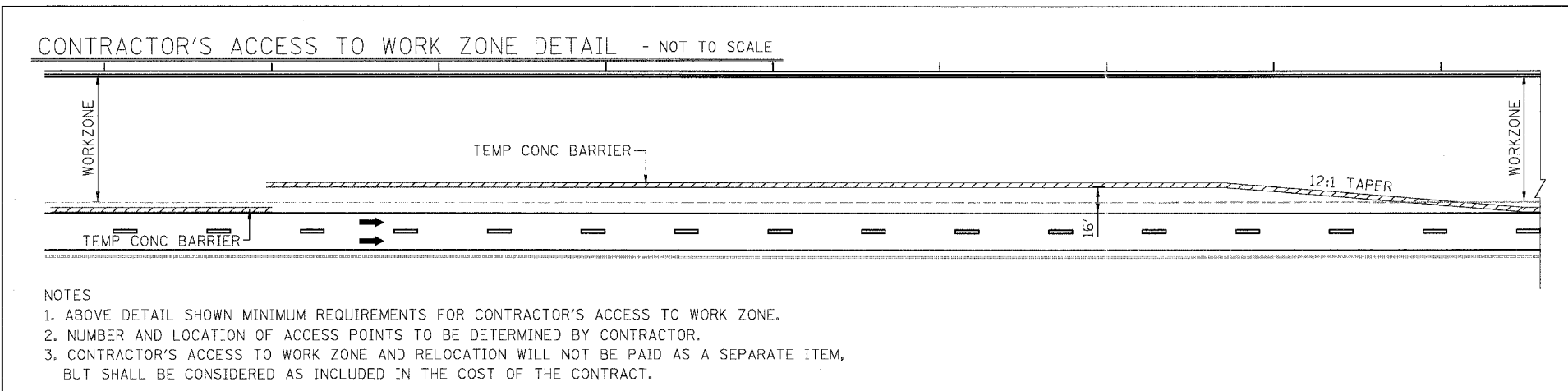


F.A.I.	SECTION	COUNTY	TOTAL SHEETS	SHEET NO.
94/90	2003-028F	COOK	419	28
STA.		TO STA.		
FED. ROAD DIST. NO.	ILLINOIS	FED. AID PROJECT		
62580				



- LEGEND**
- ↑ TRAFFIC DIRECTION
  - ▭ EXISTING PAVEMENT MARKING
  - ⊗ REMOVE EXISTING PAVEMENT MARKING
  - RAISED REFLECTIVE PAVEMENT MARKING REMOVAL
  - TEMPORARY PAVEMENT MARKING
  - ▨ WORK ZONE
  - ▤ TEMPORARY CONCRETE BARRIER
  - ▤ WITH TEMPORARY PAVEMENT MARKING - LINE 6"
  - ▤ WITH MODULAR GLARE SCREEN SYSTEM
  - ▨ OVERLAYED PAVEMENT
  - ▤ EXISTING BARRIER



REVISIONS		ILLINOIS DEPARTMENT OF TRANSPORTATION F.A.I. 94/90 (DAN RYAN EXPRESSWAY) NB DAN RYAN ELEVATED BRIDGE REPAIR FROM 15TH TO 28TH STREETS MAINTENANCE OF TRAFFIC PLAN GENERAL NOTES AND TYPICAL SECTIONS
NAME	DATE	

SCALE: -NTS DRAWN BY: RA  
DATE: 8/12/2005 CHECKED BY: RS

MTS-04

BOWMAN, BARRETT & ASSOCIATES INC.  
CONSULTING ENGINEERS  
Chicago, Illinois  
312.228.0100  
www.bbainc.com

8/11/2005 3:30:03 PM