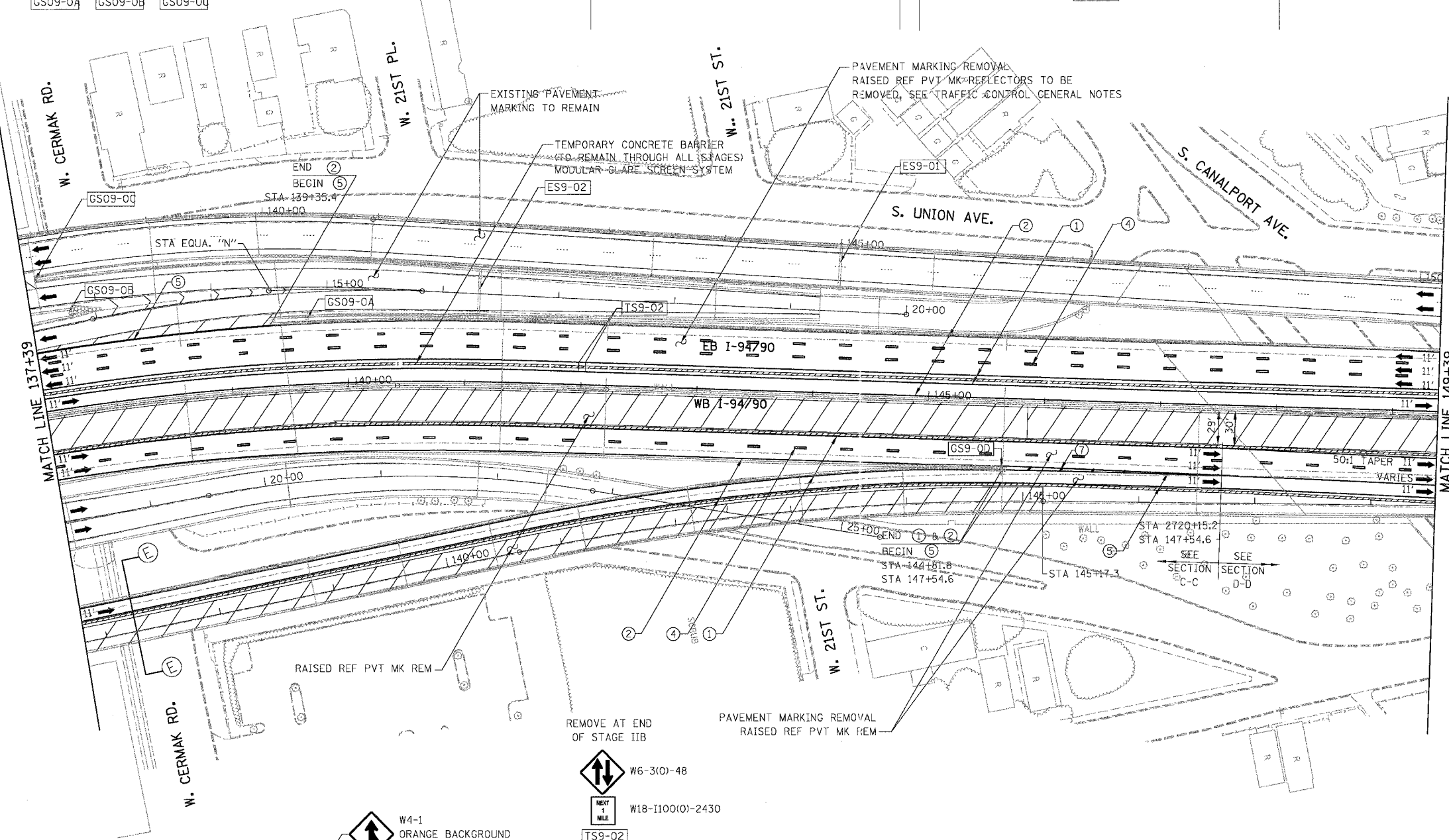
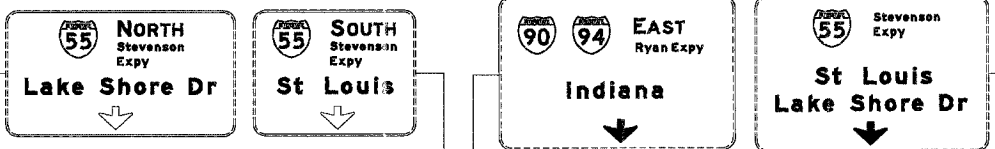


F.A.I.	SECTION	COUNTY	TOTAL SHEETS	SHEET NO.
94/90	2003-028F	COOK	419	37
STA.	TO STA.			
FED. ROAD DIST. NO.	ILLINOIS	FED. AID PROJECT		
62580				

NOTE:
EB TEMPORARY PAVEMENT MARKINGS INSTALLED IN STAGE I TO REMAIN TO END OF STAGE IIB, UNLESS OTHERWISE SPECIFIED



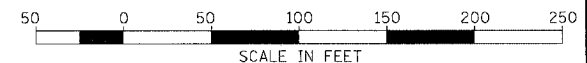
- LEGEND
- WORK ZONE
 - DIRECTION OF TRAFFIC
 - DRUM OR BARRICADE TYPE II WITH STEADY BURN LIGHT
 - IMPACT ATTENUATORS, TEMPORARY (NON-REDIRECTIVE), TEST LEVEL 3
 - BARRICADE TYPE III
 - TEMPORARY CONCRETE BARRIER
 - ① LINE 4" (YELLOW EDGE LINE)
 - ② LINE 4" (WHITE EDGE LINE)
 - ③ LINE 4" (SKIP DASH, 6' SKIP - 2' DASH, WHITE)
 - ④ LINE 5" (SKIP DASH, 30' SKIP - 10' DASH, WHITE)
 - ⑤ LINE 8" (WHITE LINE)
 - ⑥ LINE 8" (SKIP DASH, 12' SKIP - 3' DASH, WHITE)
 - ⑦ LINE 12" (DIAGONAL, 30' C-C)
 - ⑧ LINE 12" (DIAGONAL, 500' C-C)
 - ⑨ LETTERS AND SYMBOLS
 - ESx-xx EXISTING OVERHEAD OR CANTILEVER SIGNS
 - GSx-xx EXISTING POST MOUNTED SIGNS
 - TSx-xx TEMPORARY SIGNS

NOTE:
WB I-94/90 TEMPORARY INFORMATION SIGNING, PANEL COVERING AND PANEL REPLACING TO BE REMOVED AT END OF STAGE IA, UNLESS OTHERWISE SPECIFIED
WB I-94/90 TEMPORARY PAVEMENT MARKINGS INSTALLED IN STAGE I TO REMAIN TO END OF STAGE IA, UNLESS OTHERWISE SPECIFIED

NOTE:
ALL PAVEMENT MARKINGS ON THIS SHEET WILL BE EPOXY PAVEMENT MARKING, UNLESS OTHERWISE NOTED. MOT-09

REVISIONS	
NAME	DATE

ILLINOIS DEPARTMENT OF TRANSPORTATION
F.A.I. 94/90 (DAN RYAN EXPRESSWAY)
NB DAN RYAN ELEVATED BRIDGE
REPAIR FROM 15TH TO 28TH STREETS
MAINTENANCE OF TRAFFIC PLAN - STAGE I
STA. 137+39 TO STA. 149+39
SCALE: 1"=50'
DATE: 7/22/2005
DRAWN BY: RA
CHECKED BY: RS



BOWMAN, BARRETT & ASSOCIATES INC.
CONSULTING ENGINEERS
Chicago, Illinois
312.228.0100
www.bbandainc.com

7/21/2005 2:45:34 PM