

F.A.I.	SECTION	COUNTY	TOTAL SHEETS	SHEET NO.
94/90	2003-028F	COOK	419	41
STA.	TO STA.			
FED. ROAD DIST. NO.	ILLINOIS	FED. AID PROJECT	62580	

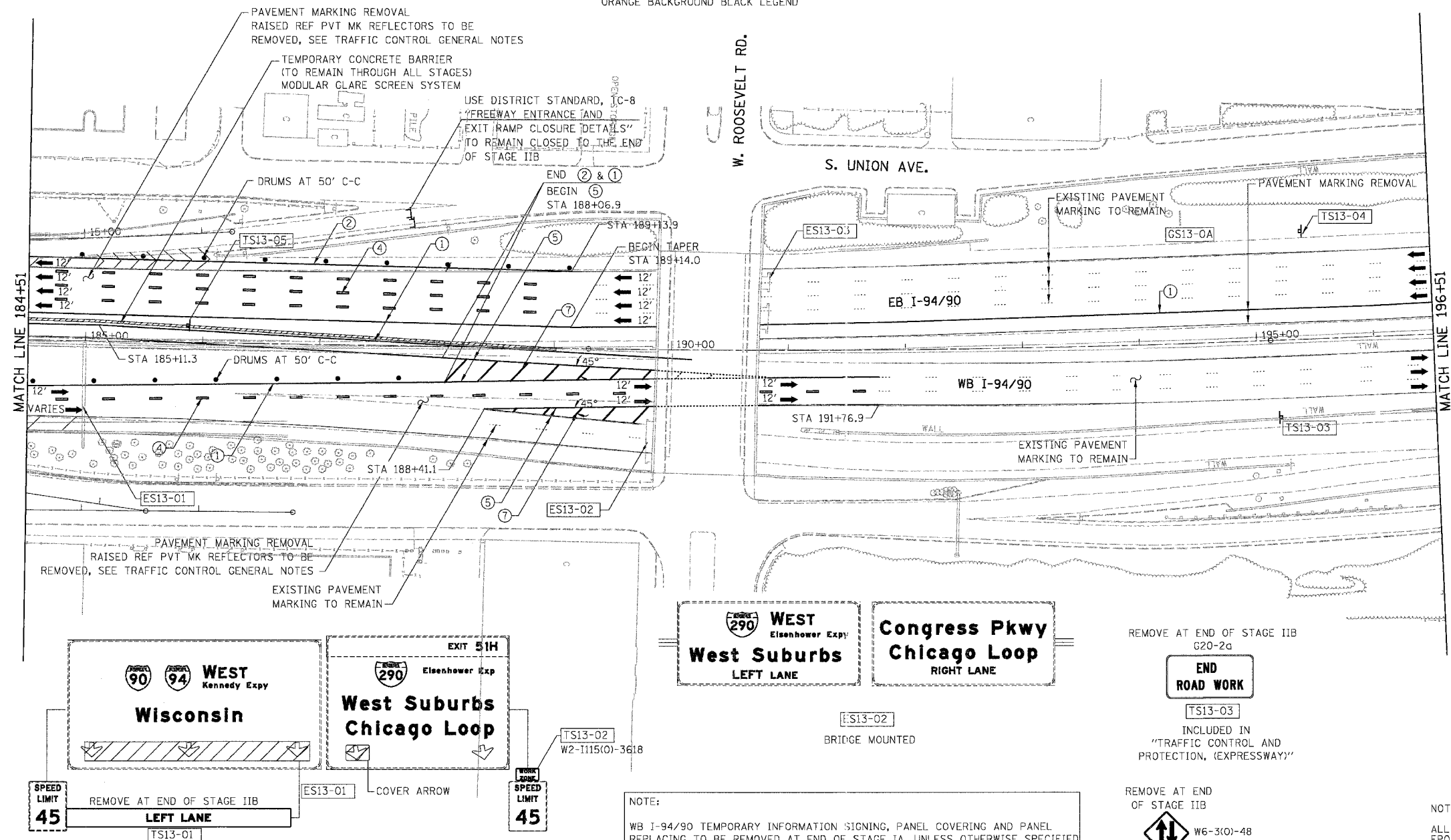
U.s. Cellular Field  
TOURIST INFO  
Turn Radio To  
1620 AM

EXIT 53  
Stevenson Expy  
St. Louis  
Lake Shore Dr  
1/2 MILE

EXIT 52C  
18th St  
3/4 MILE

NOTE:  
EB I-94/90 TEMPORARY INFORMATION SIGNING, PANEL COVERING AND PANEL REPLACING TO BE REMOVED AT END OF STAGE IIB, UNLESS OTHERWISE SPECIFIED  
EB TEMPORARY PAVEMENT MARKINGS INSTALLED IN STAGE I TO REMAIN TO END OF STAGE IIB, UNLESS OTHERWISE SPECIFIED

W4-2  
W18-1100(O)-2430  
INCLUDED IN  
"TRAFFIC CONTROL AND  
PROTECTION, (EXPRESSWAY)"  
ORANGE BACKGROUND BLACK LEGEND



- LEGEND**
- WORK ZONE
  - DIRECTION OF TRAFFIC
  - DRUM OR BARRICADE TYPE II WITH STEADY BURN LIGHT
  - IMPACT ATTENUATORS, TEMPORARY (NON-REDIRECTIVE), TEST LEVEL 3
  - BARRICADE TYPE III
  - TEMPORARY CONCRETE BARRIER
  - LINE 4" (YELLOW EDGE LINE)
  - LINE 4" (WHITE EDGE LINE)
  - LINE 4" (SKIP DASH, 6' SKIP - 2' DASH, WHITE)
  - LINE 5" (SKIP DASH, 30' SKIP - 10' DASH, WHITE)
  - LINE 8" (WHITE LINE)
  - LINE 8" (SKIP DASH, 12' SKIP - 3' DASH, WHITE)
  - LINE 12" (DIAGONAL, 30' C-C)
  - LINE 12" (DIAGONAL, 500' C-C)
  - LETTERS AND SYMBOLS
  - EXISTING OVERHEAD OR CANTILEVER SIGNS
  - EXISTING POST MOUNTED SIGNS
  - TEMPORARY SIGNS

NOTE:  
WB I-94/90 TEMPORARY INFORMATION SIGNING, PANEL COVERING AND PANEL REPLACING TO BE REMOVED AT END OF STAGE IA, UNLESS OTHERWISE SPECIFIED  
WB I-94/90 TEMPORARY PAVEMENT MARKINGS INSTALLED IN STAGE I TO REMAIN TO END OF STAGE IA, UNLESS OTHERWISE SPECIFIED

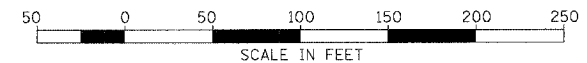
REMOVE AT END OF STAGE IIB  
G20-2c  
**END ROAD WORK**  
TS13-03  
INCLUDED IN  
"TRAFFIC CONTROL AND  
PROTECTION, (EXPRESSWAY)"

REMOVE AT END OF STAGE IIB  
W6-310(-)48  
W18-1100(O)-2430  
TS13-05

NOTE:  
ALL PAVEMENT MARKINGS ON THIS SHEET WILL BE EPOXY PAVEMENT MARKING, UNLESS OTHERWISE NOTED.

REVISIONS	
NAME	DATE

ILLINOIS DEPARTMENT OF TRANSPORTATION  
F.A.I. 94/90 (DAN RYAN EXPRESSWAY)  
NB DAN RYAN ELEVATED BRIDGE  
REPAIR FROM 15TH TO 28TH STREETS  
MAINTENANCE OF TRAFFIC PLAN - STAGE I  
STA. 184+51 TO STA. 196+51  
SCALE: 1"=50'  
DATE: 7/22/2005  
DRAWN BY: RA  
CHECKED BY: RS



BOWMAN, BARRETT & ASSOCIATES INC.  
CONSULTING ENGINEERS  
Chicago, Illinois  
312.228.0100  
www.bbainc.com