

F.A.I.	SECTION	COUNTY	TOTAL SHEETS	SHEET NO.
94/90	2003-028F	COOK	419	47
STA.	TO STA.			
FED. ROAD DIST. NO.	ILLINOIS	FED. AID PROJECT		
62580				

NOTE:  
EB TEMPORARY PAVEMENT MARKINGS INSTALLED IN STAGE I TO REMAIN TO END OF STAGE IIB, UNLESS OTHERWISE SPECIFIED

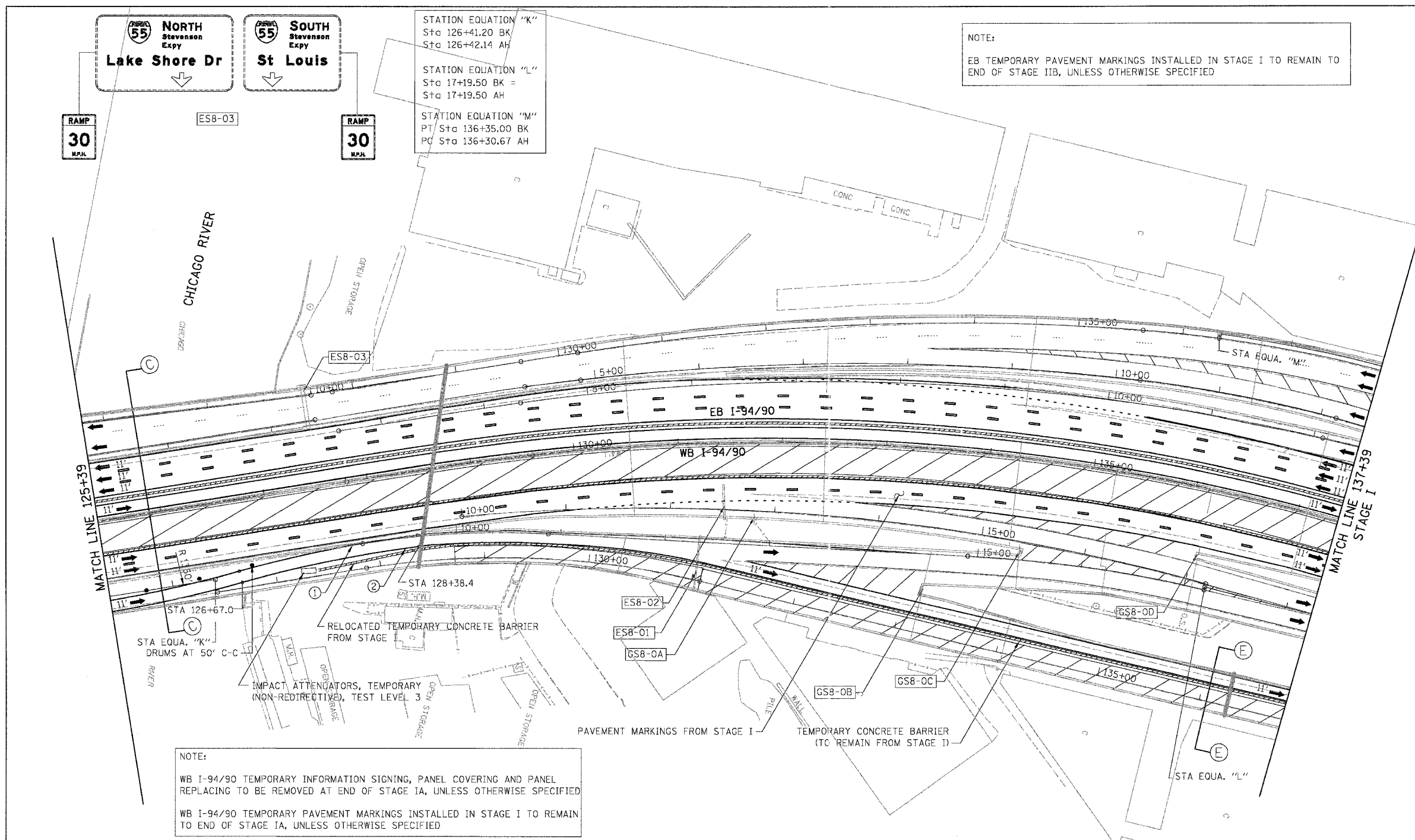
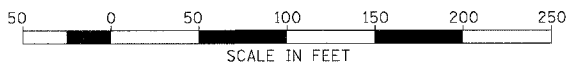
- LEGEND**
- WORK ZONE
  - DIRECTION OF TRAFFIC
  - DRUM OR BARRICADE TYPE II WITH STEADY BURN LIGHT
  - IMPACT ATTENUATORS, TEMPORARY (NON-REDIRECTIVE), TEST LEVEL 3
  - BARRICADE TYPE III
  - TEMPORARY CONCRETE BARRIER
  - ① LINE 4" (YELLOW EDGE LINE)
  - ② LINE 4" (WHITE EDGE LINE)
  - ③ LINE 4" (SKIP DASH, 6' SKIP - 2' DASH, WHITE)
  - ④ LINE 5" (SKIP DASH, 30' SKIP - 10' DASH, WHITE)
  - ⑤ LINE 8" (WHITE LINE)
  - ⑥ LINE 8" (SKIP DASH, 12' SKIP - 3' DASH, WHITE)
  - ⑦ LINE 12" (DIAGONAL, 30' C-C)
  - ⑧ LINE 12" (DIAGONAL, 500' C-C)
  - ⑨ LETTERS AND SYMBOLS
  - ESx-xx EXISTING OVERHEAD OR CANTILEVER SIGNS
  - GSx-xx EXISTING POST MOUNTED SIGNS
  - TSx-xx TEMPORARY SIGNS

NOTE:  
WB I-94/90 TEMPORARY INFORMATION SIGNING, PANEL COVERING AND PANEL REPLACING TO BE REMOVED AT END OF STAGE IA, UNLESS OTHERWISE SPECIFIED  
WB I-94/90 TEMPORARY PAVEMENT MARKINGS INSTALLED IN STAGE I TO REMAIN TO END OF STAGE IA, UNLESS OTHERWISE SPECIFIED

NOTE:  
ALL PAVEMENT MARKINGS ON THIS SHEET WILL BE EPOXY PAVEMENT MARKING, UNLESS OTHERWISE NOTED.

REVISIONS	
NAME	DATE

ILLINOIS DEPARTMENT OF TRANSPORTATION  
F.A.I. 94/90 (DAN RYAN EXPRESSWAY)  
NB DAN RYAN ELEVATED BRIDGE  
REPAIR FROM 15TH TO 28TH STREETS  
MAINTENANCE OF TRAFFIC PLAN - STAGE IA  
STA. 125+39 TO STA. 137+39  
SCALE: 1"=50'  
DATE: 7/22/2005  
DRAWN BY: RA  
CHECKED BY: RS



**55 NORTH Stevenson Expy**  
**55 SOUTH Stevenson Expy**

RAMP 30 MPH

RAMP 30 MPH

STATION EQUATION "K"  
Sta 126+41.20 BK  
Sta 126+42.14 AH

STATION EQUATION "L"  
Sta 17+19.50 BK =  
Sta 17+19.50 AH

STATION EQUATION "M"  
PT/ Sta 136+35.00 BK  
PC/ Sta 136+30.67 AH

MATCH LINE 125+39

MATCH LINE 137+39  
STAGE I

EXIT 53A  
**Canalport Ave**  
**Cermak Rd**

90 WEST Ryan Expy  
**Wisconsin**

EXIT 53A  
**Canalport Ave**  
**Cermak Rd**

RAMP 30 MPH  
EXIT 53A  
EXIT 53A

ES8-01  
COVER ARROW FROM STAGE I

ES8-02

GS8-0A GS8-0B GS8-0C GS8-0D

BOWMAN, BARRETT & ASSOCIATES INC.  
CONSULTING ENGINEERS  
Chicago, Illinois  
312.228.0100  
www.bbainc.com

7/21/2005 2:55:17 PM