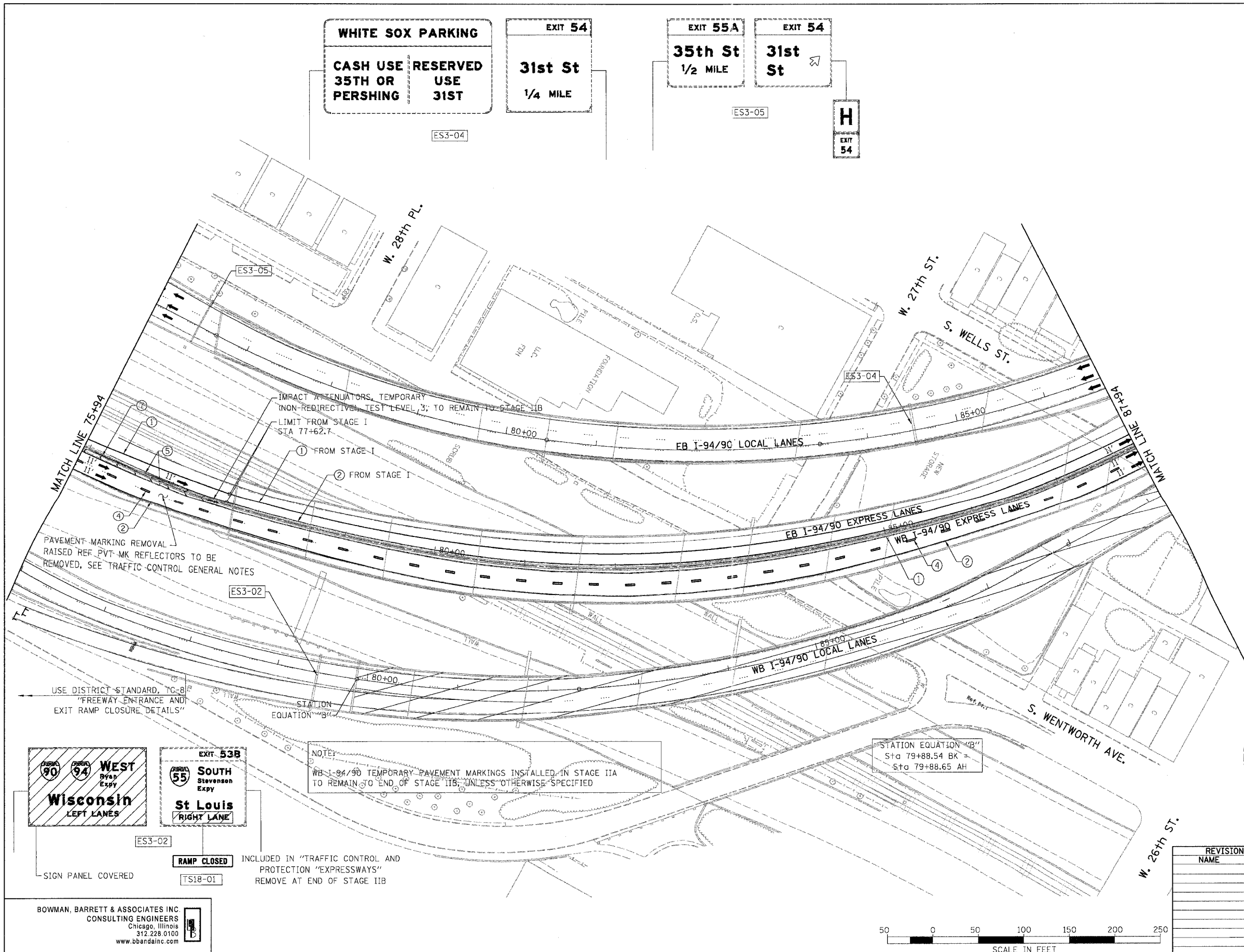


F.A.I.	SECTION	COUNTY	TOTAL SHEETS	SHEET NO.
94/90	2003-028F	COOK	419	50
STA.		TO STA.		
FED. ROAD DIST. NO.	ILLINOIS	FED. AID PROJECT		

62580



- LEGEND**
- WORK ZONE
 - DIRECTION OF TRAFFIC
 - DRUM OR BARRICADE TYPE II WITH STEADY BURN LIGHT
 - IMPACT ATTENUATORS, TEMPORARY (NON-REDIRECTIVE), TEST LEVEL 3
 - BARRICADE TYPE III
 - TEMPORARY CONCRETE BARRIER
 - LINE 4" (YELLOW EDGE LINE)
 - LINE 4" (WHITE EDGE LINE)
 - LINE 4" (SKIP DASH, 6' SKIP - 2' DASH, WHITE)
 - LINE 5" (SKIP DASH, 30' SKIP - 10' DASH, WHITE)
 - LINE 8" (WHITE LINE)
 - LINE 8" (SKIP DASH, 12' SKIP - 3' DASH, WHITE)
 - LINE 12" (DIAGONAL, 30' C-C)
 - LINE 12" (DIAGONAL, 500' C-C)
 - LETTERS AND SYMBOLS
 - EXISTING OVERHEAD OR CANTILEVER SIGNS
 - EXISTING POST MOUNTED SIGNS
 - TEMPORARY SIGNS

NOTE:
ALL PAVEMENT MARKINGS ON THIS SHEET WILL BE PAVEMENT MARKING TAPE, TYPE III, UNLESS OTHERWISE NOTED.

MOT-22

REVISIONS	
NAME	DATE

ILLINOIS DEPARTMENT OF TRANSPORTATION
 F.A.I. 94/90 (DAN RYAN EXPRESSWAY)
 NB DAN RYAN ELEVATED BRIDGE
 REPAIR FROM 15TH TO 28TH STREETS
 MAINTENANCE OF TRAFFIC PLAN - STAGE IIA
 STA. 75+94 TO STA. 87+94

SCALE: 1"=50'
 DATE: 8/12/2005

DRAWN BY: RA
 CHECKED BY: RS



BOWMAN, BARRETT & ASSOCIATES INC.
 CONSULTING ENGINEERS
 Chicago, Illinois
 312.228.0100
 www.bbandainc.com

RAMP CLOSED INCLUDED IN "TRAFFIC CONTROL AND PROTECTION "EXPRESSWAYS" REMOVE AT END OF STAGE IIB

NOTE:
WB I-94/90 TEMPORARY PAVEMENT MARKINGS INSTALLED IN STAGE IIA TO REMAIN TO END OF STAGE IIB, UNLESS OTHERWISE SPECIFIED

STATION EQUATION "B"
 Sta 79+88.54 BK
 Sta 79+88.65 AH

USE DISTRICT STANDARD, TC-8
 "FREEWAY ENTRANCE AND EXIT RAMP CLOSURE DETAILS"

PAVEMENT MARKING REMOVAL
 RAISED REF. PVT-MK REFLECTORS TO BE REMOVED, SEE TRAFFIC CONTROL GENERAL NOTES

IMPACT ATTENUATORS, TEMPORARY (NON-REDIRECTIVE), TEST LEVEL 3; TO REMAIN TO STAGE IIB
 LIMIT FROM STAGE I STA 77+62.7

① FROM STAGE I
 ② FROM STAGE I

WHITE SOX PARKING
 CASH USE RESERVED
 35TH OR PERSHING USE 31ST

EXIT 54
 31st St
 1/4 MILE

EXIT 55A
 35th St
 1/2 MILE

EXIT 54
 31st St

H
 EXIT 54