

F.A.I.	SECTION	COUNTY	TOTAL SHEETS	SHEET NO.
94/90	• 2003-028F	COOK	419	65
STA.	TO STA.			
FED. ROAD DIST. NO.	ILLINOIS	FED. AID PROJECT	62580	

WHITE SOX PARKING
CASH USE 35TH OR PERSHING | RESERVED USE 31ST

EXIT 54
31st St
1/4 MILE

EXIT 55A
35th St
1/2 MILE

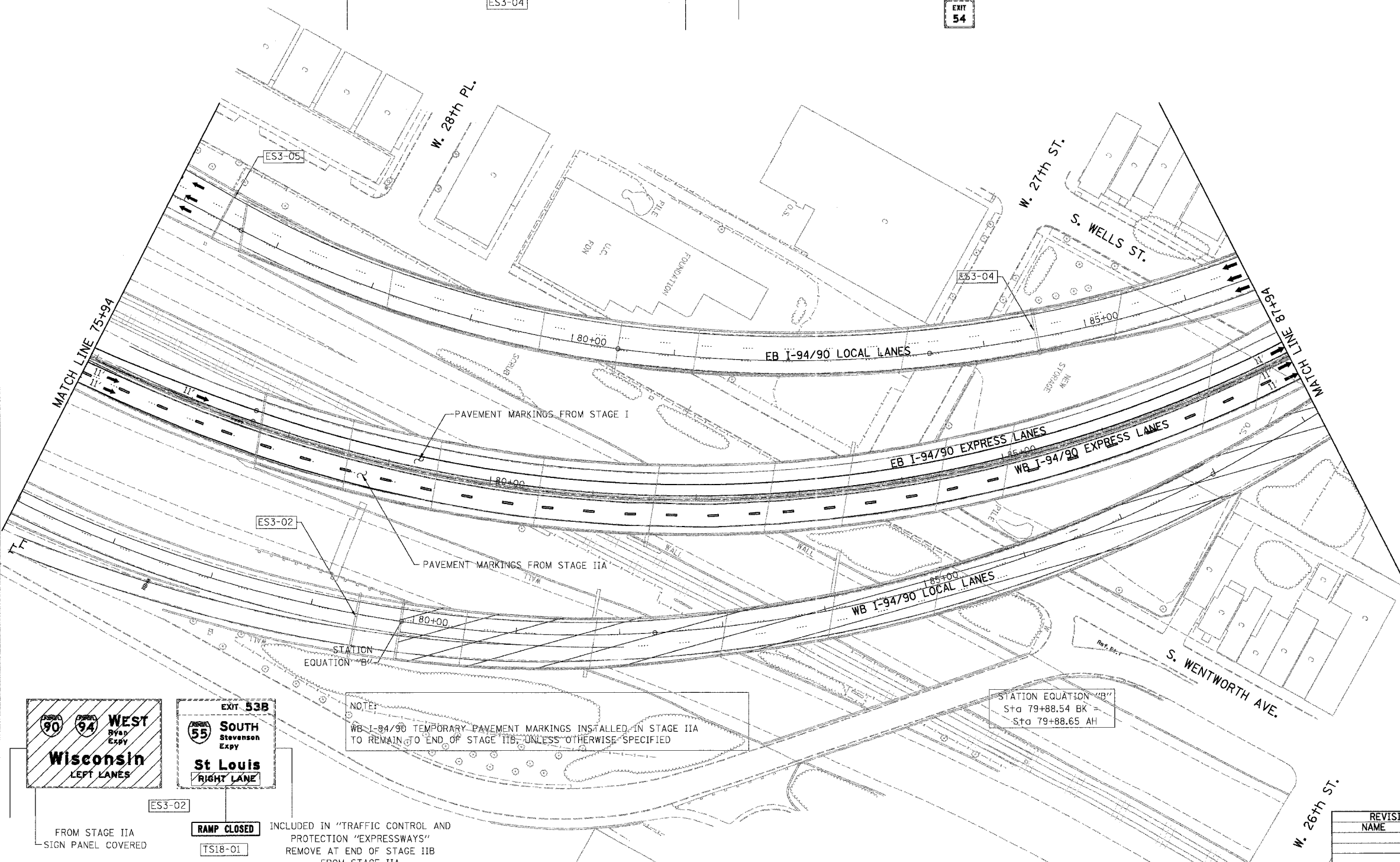
EXIT 54
31st St

ES3-05

H
EXIT 54

LEGEND

- WORK ZONE
- DIRECTION OF TRAFFIC
- DRUM OR BARRICADE TYPE II WITH STEADY BURN LIGHT
- IMPACT ATTENUATORS, TEMPORARY (NON-REDIRECTIVE), TEST LEVEL 3
- BARRICADE TYPE III
- TEMPORARY CONCRETE BARRIER
- ① LINE 4" (YELLOW EDGE LINE)
- ② LINE 4" (WHITE EDGE LINE)
- ③ LINE 4" (SKIP DASH, 6' SKIP - 2' DASH, WHITE)
- ④ LINE 5" (SKIP DASH, 30' SKIP - 10' DASH, WHITE)
- ⑤ LINE 8" (WHITE LINE)
- ⑥ LINE 8" (SKIP DASH, 12' SKIP - 3' DASH, WHITE)
- ⑦ LINE 12" (DIAGONAL, 30' C-C)
- ⑧ LINE 12" (DIAGONAL, 500' C-C)
- ⑨ LETTERS AND SYMBOLS
- ESx-xx EXISTING OVERHEAD OR CANTILEVER SIGNS
- GSx-xx EXISTING POST MOUNTED SIGNS
- TSx-xx TEMPORARY SIGNS



NOTE:
WB I-94/90 TEMPORARY PAVEMENT MARKINGS INSTALLED IN STAGE IIA TO REMAIN TO END OF STAGE IIB, UNLESS OTHERWISE SPECIFIED

STATION EQUATION "B"
Sta 79+88.54 BK =
Sta 79+88.65 AH

NOTE:
ALL PAVEMENT MARKINGS ON THIS SHEET WILL BE PAVEMENT MARKING TAPE, TYPE III, UNLESS OTHERWISE NOTED.

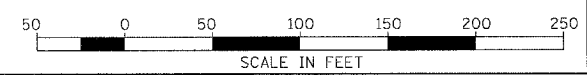
MOT-37

EXIT 53B
WEST
Wisconsin
LEFT LANES

EXIT 53B
SOUTH
St Louis
RIGHT LANE

RAMP CLOSED
INCLUDED IN "TRAFFIC CONTROL AND PROTECTION "EXPRESSWAYS" REMOVE AT END OF STAGE IIB FROM STAGE IIA

BOWMAN, BARRETT & ASSOCIATES INC.
CONSULTING ENGINEERS
Chicago, Illinois
312.228.0100
www.bbandainc.com



REVISIONS	
NAME	DATE

ILLINOIS DEPARTMENT OF TRANSPORTATION
F.A.I. 94/90 (DAN RYAN EXPRESSWAY)
NB DAN RYAN ELEVATED BRIDGE
REPAIR FROM 15TH TO 28TH STREETS
MAINTENANCE OF TRAFFIC PLAN - STAGE IIB
STA. 75+94 TO STA. 87+94
SCALE: 1"=50'
DATE: 7/22/2005
DRAWN BY: RA
CHECKED BY: RS

7/20/2005 3:06:48 PM