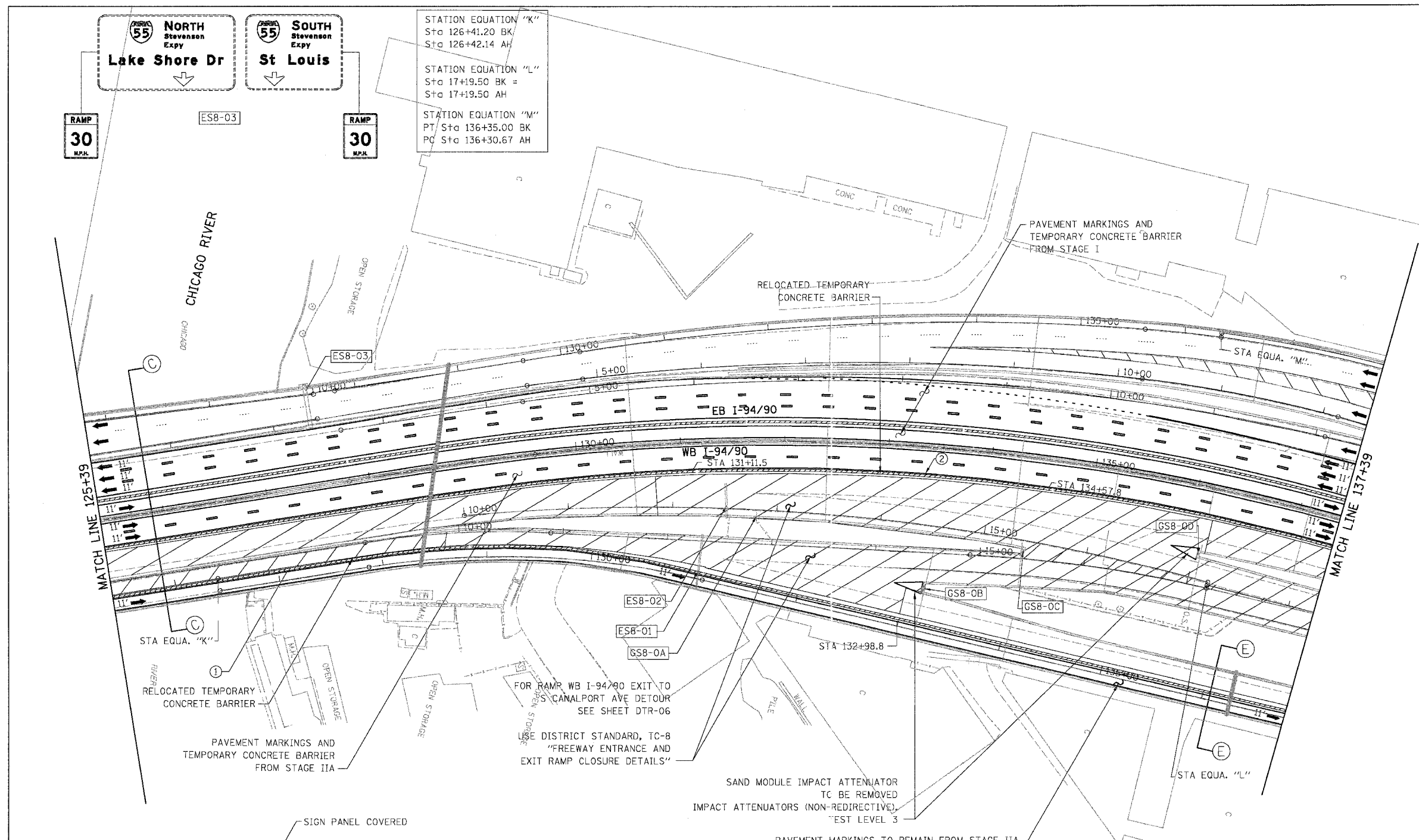
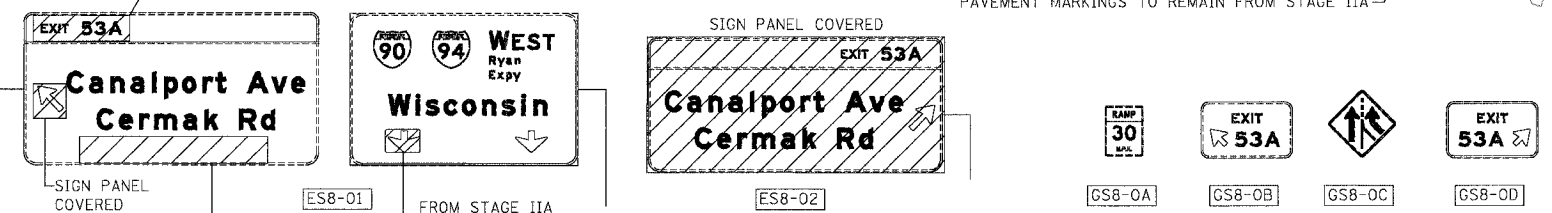


|                     |           |                  |              |           |
|---------------------|-----------|------------------|--------------|-----------|
| F.A.I.              | SECTION   | COUNTY           | TOTAL SHEETS | SHEET NO. |
| 94/90               | 2003-028F | COOK             | 419          | 70        |
| STA.                | TO STA.   |                  |              |           |
| FED. ROAD DIST. NO. | ILLINOIS  | FED. AID PROJECT |              |           |
| 62580               |           |                  |              |           |



- LEGEND**
- WORK ZONE
  - DIRECTION OF TRAFFIC
  - DRUM OR BARRICADE TYPE II WITH STEADY BURN LIGHT
  - IMPACT ATTENUATORS, TEMPORARY (NON-REDIRECTIVE), TEST LEVEL 3
  - BARRICADE TYPE III
  - TEMPORARY CONCRETE BARRIER
  - ① LINE 4" (YELLOW EDGE LINE)
  - ② LINE 4" (WHITE EDGE LINE)
  - ③ LINE 4" (SKIP DASH, 6' SKIP - 2' DASH, WHITE)
  - ④ LINE 5" (SKIP DASH, 30' SKIP - 10' DASH, WHITE)
  - ⑤ LINE 8" (WHITE LINE)
  - ⑥ LINE 8" (SKIP DASH, 12' SKIP - 3' DASH, WHITE)
  - ⑦ LINE 12" (DIAGONAL, 30' C-C)
  - ⑧ LINE 12" (DIAGONAL, 500' C-C)
  - ⑨ LETTERS AND SYMBOLS
  - ESx-xx EXISTING OVERHEAD OR CANTILEVER SIGNS
  - GSx-xx EXISTING POST MOUNTED SIGNS
  - TSx-xx TEMPORARY SIGNS



NOTE:  
WB I-94/90 TEMPORARY PAVEMENT MARKINGS INSTALLED IN STAGE IIA TO REMAIN TO END OF STAGE IIB, UNLESS OTHERWISE SPECIFIED

NOTE:  
ALL PAVEMENT MARKINGS ON THIS SHEET WILL BE PAVEMENT MARKING TAPE, TYPE III, UNLESS OTHERWISE NOTED.

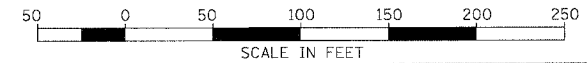
MOT-42

| REVISIONS |      |
|-----------|------|
| NAME      | DATE |
|           |      |
|           |      |
|           |      |
|           |      |
|           |      |

ILLINOIS DEPARTMENT OF TRANSPORTATION  
**F.A.I. 94/90 (DAN RYAN EXPRESSWAY)  
 NB DAN RYAN ELEVATED BRIDGE  
 REPAIR FROM 15TH TO 28TH STREETS  
 MAINTENANCE OF TRAFFIC PLAN - STAGE IIB  
 STA. 125+39 TO STA. 137+39**

SCALE: 1"=50'  
 DATE: 7/22/2005

DRAWN BY: RA  
 CHECKED BY: RS



BOWMAN, BARRETT & ASSOCIATES INC.  
 CONSULTING ENGINEERS  
 Chicago, Illinois  
 312.228.0100  
 www.bbainc.com

7/22/2005 3:58:49 PM