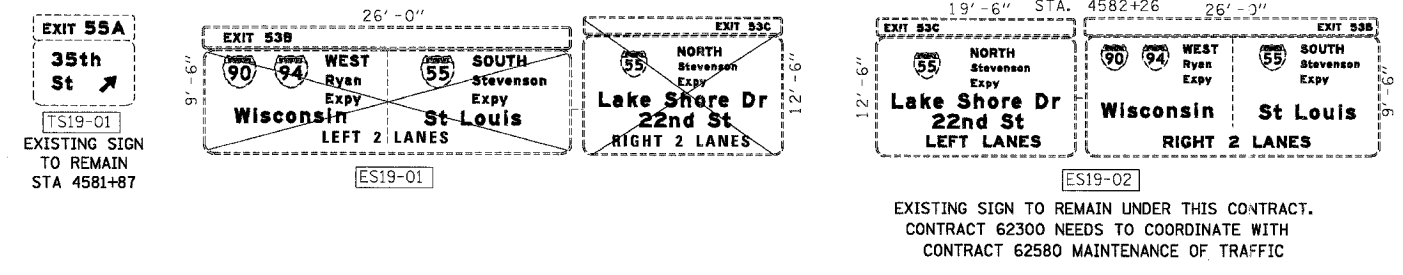
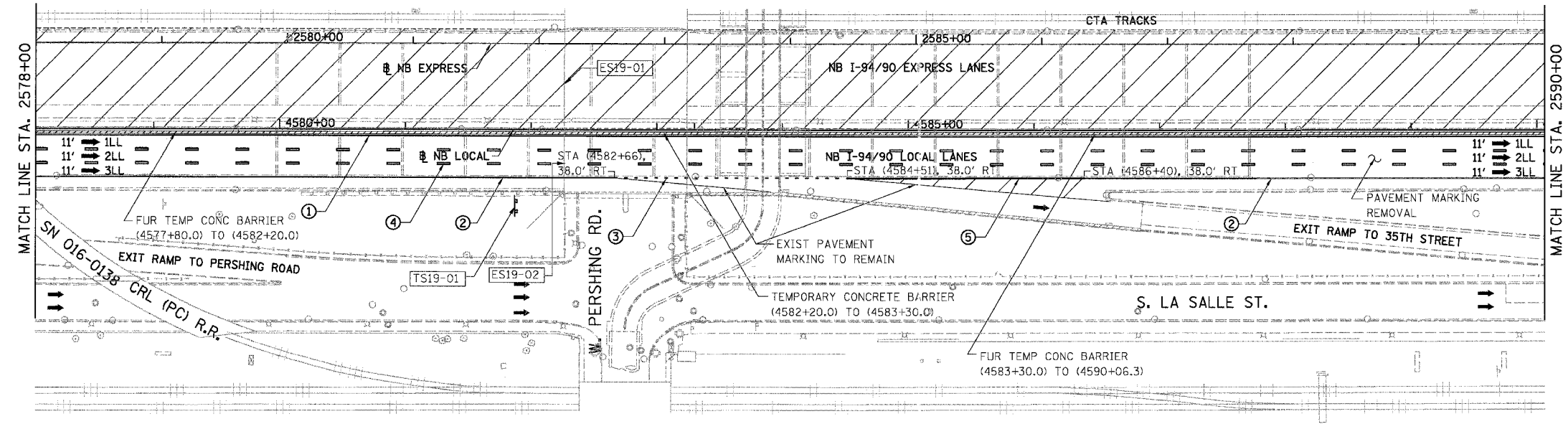
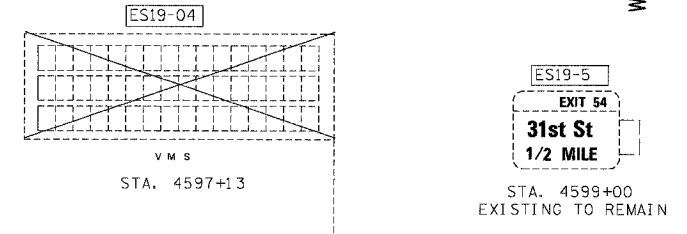
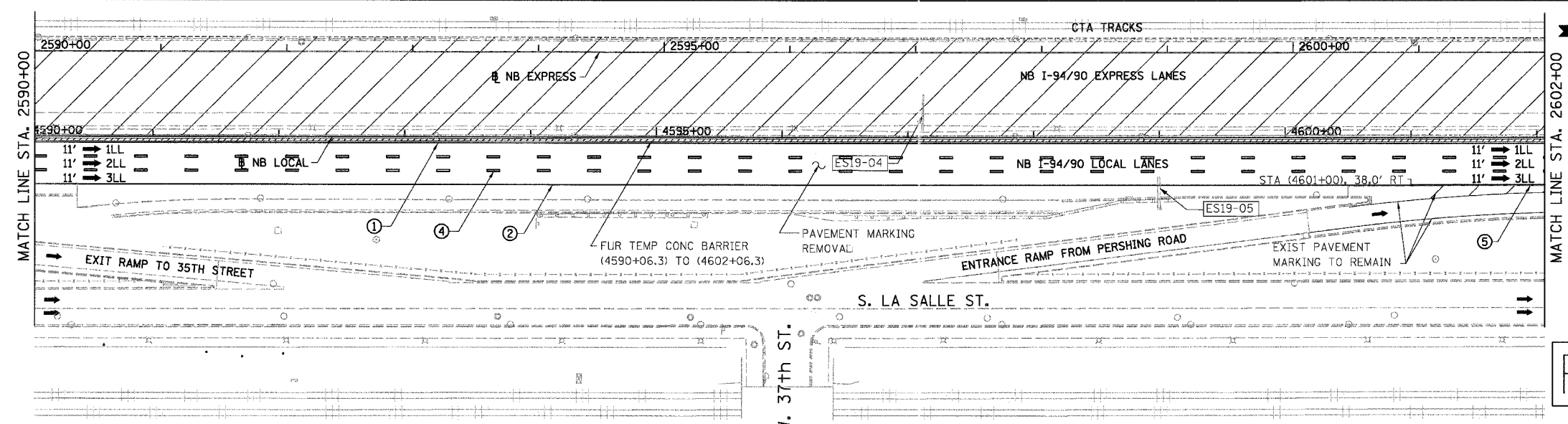


F.A.I.	SECTION	COUNTY	TOTAL SHEETS	SHEET NO.
94/90	*	COOK	419	78
STA. 2578+00		TO STA. 2602+00		
FED. ROAD DIST. NO.		ILLINOIS FED. AID PROJECT		
62580		*11818, ETC, 2324.6-1PIR-8		



EXISTING SIGN TO REMAIN UNDER THIS CONTRACT.
CONTRACT 62300 NEEDS TO COORDINATE WITH
CONTRACT 62580 MAINTENANCE OF TRAFFIC

- LEGEND**
- WORK ZONE
 - TEMPORARY PAVEMENT
 - ILL TRAFFIC LANE & DIRECTION OF TRAFFIC
 - DRUM OR BARRICADE TYPE II WITH STEADY BURN LIGHT
 - IMPACT ATTENUATORS, TEMPORARY (NON-REDIRECTIVE), TEST LEVEL 3
 - BARRICADE TYPE III
 - TEMPORARY CONCRETE BARRIER
 - ① LINE 4" (YELLOW EDGE LINE)
 - ② LINE 4" (WHITE EDGE LINE)
 - ③ LINE 4" (SKIP DASH, 6' SKIP - 2' DASH, WHITE)
 - ④ LINE 5" (SKIP DASH, 30' SKIP - 10' DASH, WHITE)
 - ⑤ LINE 8" (WHITE GORE LINE)
 - ⑥ LINE 8" (SKIP DASH, 12' SKIP - 3' DASH, WHITE)
 - ⑦ LINE 12" (DIAGONAL, 30' C-C)
 - ⑧ LINE 12" (DIAGONAL, 500' C-C)
 - ⑨ LETTERS AND SYMBOLS
 - ESx-xx EXISTING SIGNS
 - TSx-xx TEMPORARY SIGNS



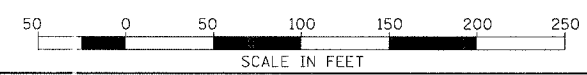
FOR INFORMATION ONLY

NOTE:
ALL PAVEMENT MARKINGS ON THIS SHEET WILL BE PAVEMENT MARKING TAPE, TYPE III, UNLESS OTHERWISE NOTED.

MOT-16

REVISIONS		ILLINOIS DEPARTMENT OF TRANSPORTATION F.A.I. 94/90 (DAN RYAN EXPRESSWAY) 31ST STREET TO 71ST STREET NB EXPRESS LANE RECONSTRUCTION MAINTENANCE OF TRAFFIC PLAN STAGE 1 NORTHBOUND STA. 2578+00 TO STA. 2602+00
NAME	DATE	
		SCALE: 1"=50' DATE: 7/22/2005 DRAWN BY: RA CHECKED BY: RS

STATIONING
 +**.* STATION PROVIDED FROM THE NB I-90/94 EXPRESS LANES
 (+**.***) STATION PROVIDED FROM THE NB I-90/94 LOCAL LANES
 [+**.***] STATION PROVIDED FROM THE SLIP RAMP



BOWMAN, BARRETT & ASSOCIATES INC.
CONSULTING ENGINEERS
Chicago, Illinois
312.228.0100
www.bbadainc.com

7/19/2005