

# RAMP "B" CLOSED

(WB I-94/90 EXIT TO SB I-55)

F.A.I.	SECTION	COUNTY	TOTAL SHEETS	SHEET NO.
94/90	2003-028F	COOK	419	92
STA.	TO STA.			
FED. ROAD DIST. NO.	ILLINOIS	FED. AID PROJECT		
62580				



## ALTERNATIVE ROUTE

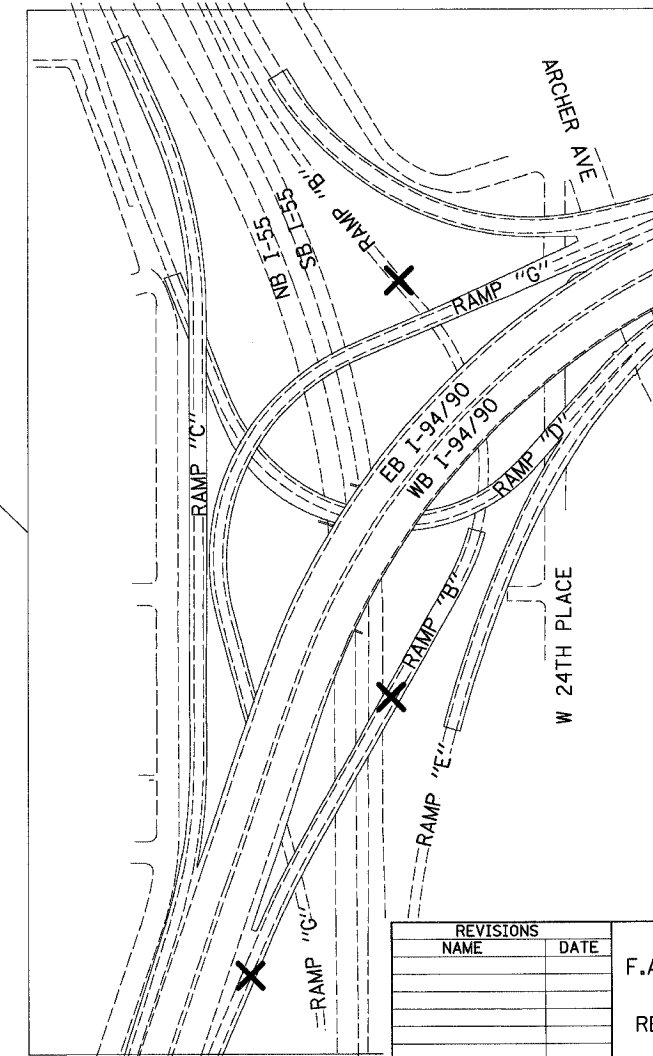
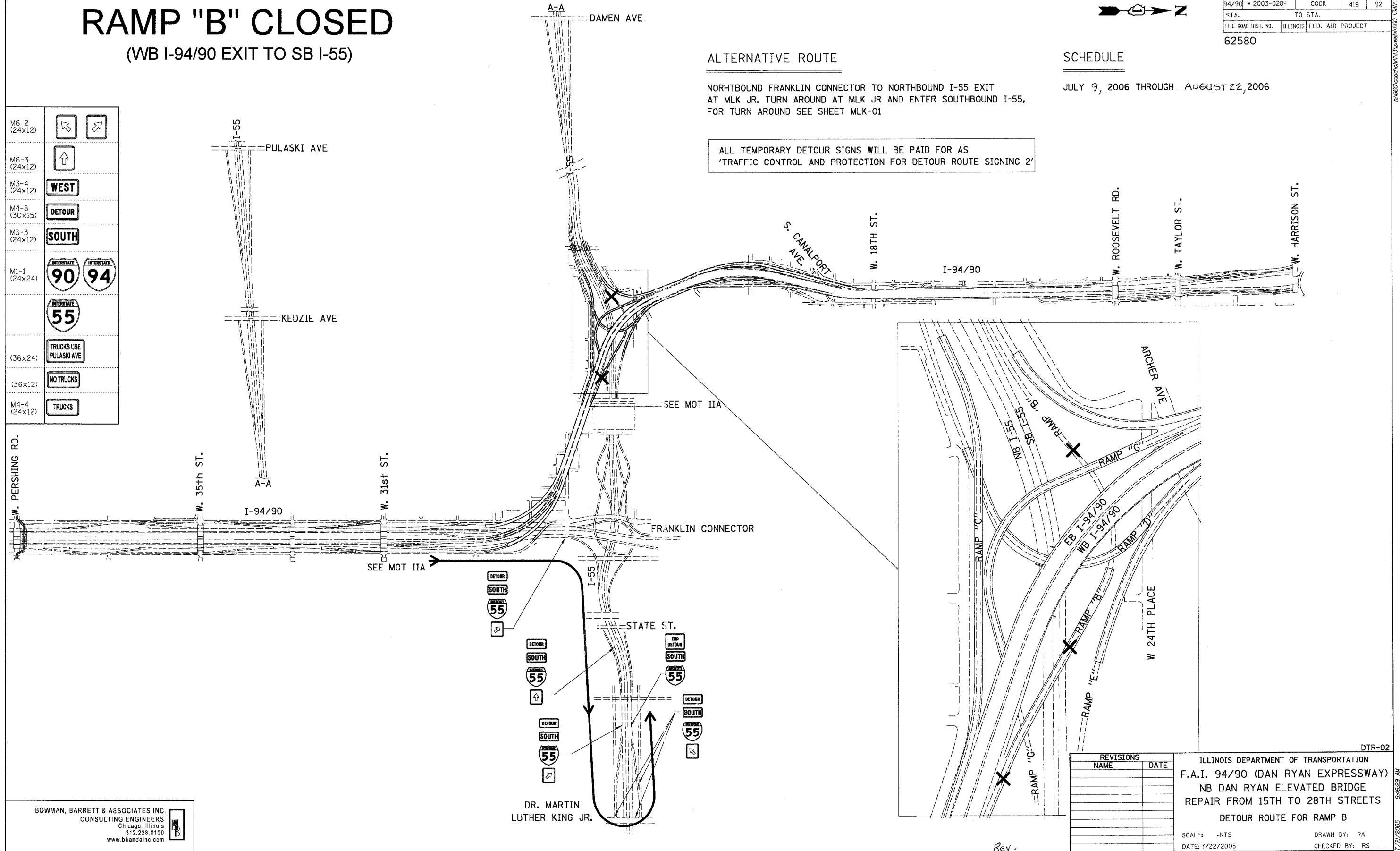
NORHTBOUND FRANKLIN CONNECTOR TO NORTHBOUND I-55 EXIT  
AT MLK JR. TURN AROUND AT MLK JR AND ENTER SOUTHBOUND I-55,  
FOR TURN AROUND SEE SHEET MLK-01

## SCHEDULE

JULY 9, 2006 THROUGH AUGUST 22, 2006

ALL TEMPORARY DETOUR SIGNS WILL BE PAID FOR AS  
'TRAFFIC CONTROL AND PROTECTION FOR DETOUR ROUTE SIGNING 2'

M6-2 (24x12)		
M6-3 (24x12)		
M3-4 (24x12)	<b>WEST</b>	
M4-8 (30x15)	<b>DETOUR</b>	
M3-3 (24x12)	<b>SOUTH</b>	
M1-1 (24x24)		
(36x24)	<b>TRUCKS USE PULASKI AVE</b>	
(36x12)	<b>NO TRUCKS</b>	
M4-4 (24x12)	<b>TRUCKS</b>	



REVISIONS	
NAME	DATE

DTR-02  
ILLINOIS DEPARTMENT OF TRANSPORTATION  
F.A.I. 94/90 (DAN RYAN EXPRESSWAY)  
NB DAN RYAN ELEVATED BRIDGE  
REPAIR FROM 15TH TO 28TH STREETS  
DETOUR ROUTE FOR RAMP B

SCALE: =NTS  
DATE: 7/22/2005  
DRAWN BY: RA  
CHECKED BY: RS

BOWMAN, BARRETT & ASSOCIATES INC.  
CONSULTING ENGINEERS  
Chicago, Illinois  
312.228.0100  
www.bbainc.com