

F.A.I.	SECTION	COUNTY	TOTAL SHEETS	SHEET NO.
94/90	2003-028F	COOK	419	104
STA.		TO STA.		
FED. ROAD DIST. NO.		ILLINOIS	FED. AID PROJECT	
62580				

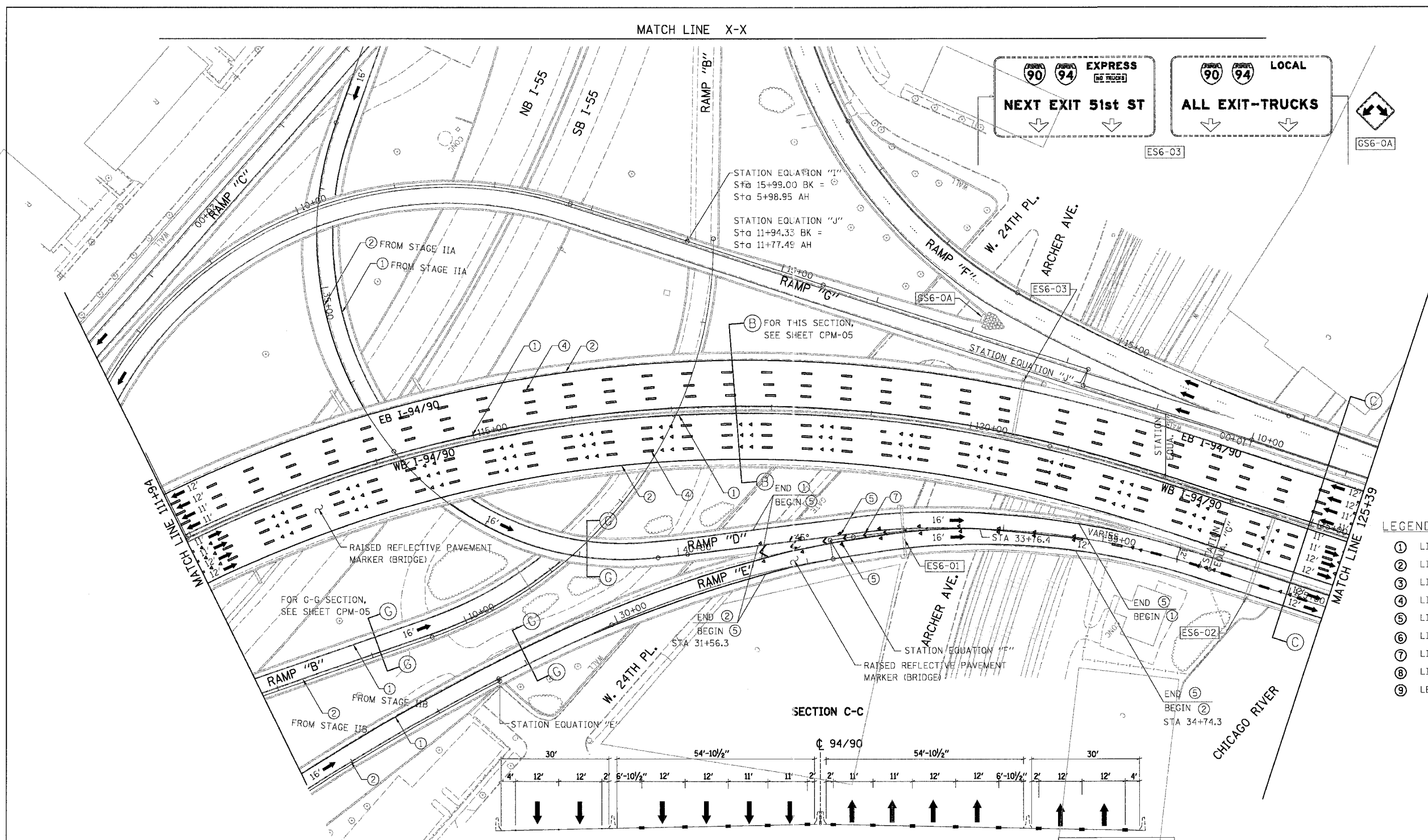
MATCH LINE X-X

EXPRESS
NO TRUCKS

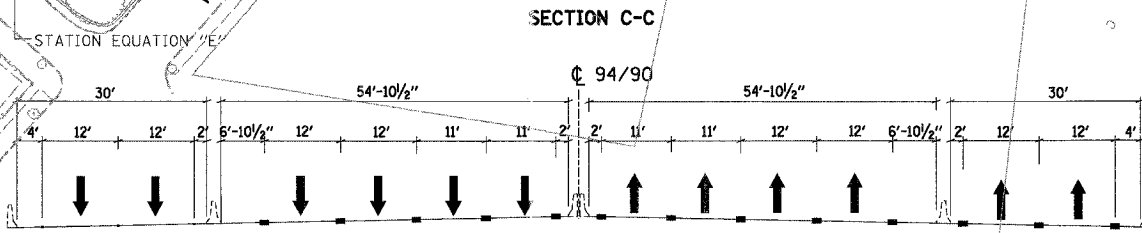
LOCAL

NEXT EXIT 51st ST

ALL EXIT-TRUCKS



- LEGEND**
- ① LINE 4" (YELLOW EDGE LINE)
 - ② LINE 4" (WHITE EDGE LINE)
 - ③ LINE 4" (SKIP DASH, 6' SKIP - 2' DASH, WHITE)
 - ④ LINE 5" (SKIP DASH, 30' SKIP - 10' DASH, WHITE)
 - ⑤ LINE 8" (WHITE LINE)
 - ⑥ LINE 8" (SKIP DASH, 12' SKIP - 3' DASH, WHITE)
 - ⑦ LINE 12" (DIAGONAL, 30' C-C)
 - ⑧ LINE 12" (DIAGONAL, 500' C-C)
 - ⑨ LETTERS AND SYMBOLS



LOOKING NORTH- NOT TO SCALE

EXIT 53A

Canalport Ave

Cermak Rd

LEFT 1/4 MILE

WEST
Ryan Expy

DMS

STATION EQUATION "E"
Sta 28+70.78 BK =
Sta 28+68.28 AH

STATION EQUATION "F"
Sta 32+25.87 BK =
Sta 32+25.87 AH

STATION EQUATION "C"
Sta 36+10.50 BK =
Sta 124+16.76 AH

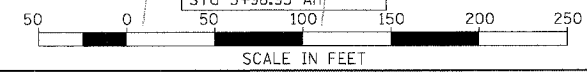
STATION EQUATION "H"
Sta 15+99.00 BK =
Sta 5+98.95 AH

NOTE:
ALL PAVEMENT MARKINGS ON THIS SHEET WILL BE EPOXY PAVEMENT MARKING, UNLESS OTHERWISE NOTED.

REVISIONS	
NAME	DATE

ILLINOIS DEPARTMENT OF TRANSPORTATION
F.A.I. 94/90 (DAN RYAN EXPRESSWAY)
NB DAN RYAN ELEVATED BRIDGE
REPAIR FROM 15TH TO 28TH STREETS
PROPOSED PAVEMENT MARKING PLAN
STA. 111+94 TO STA. 125+39

SCALE: 1"=50'
DATE: 7/22/2005
DRAWN BY: RA
CHECKED BY: RS



BOWMAN, BARRETT & ASSOCIATES INC.
CONSULTING ENGINEERS
Chicago, Illinois
312.228.0100
www.bbainc.com

7/21/2005 4:00:50 PM