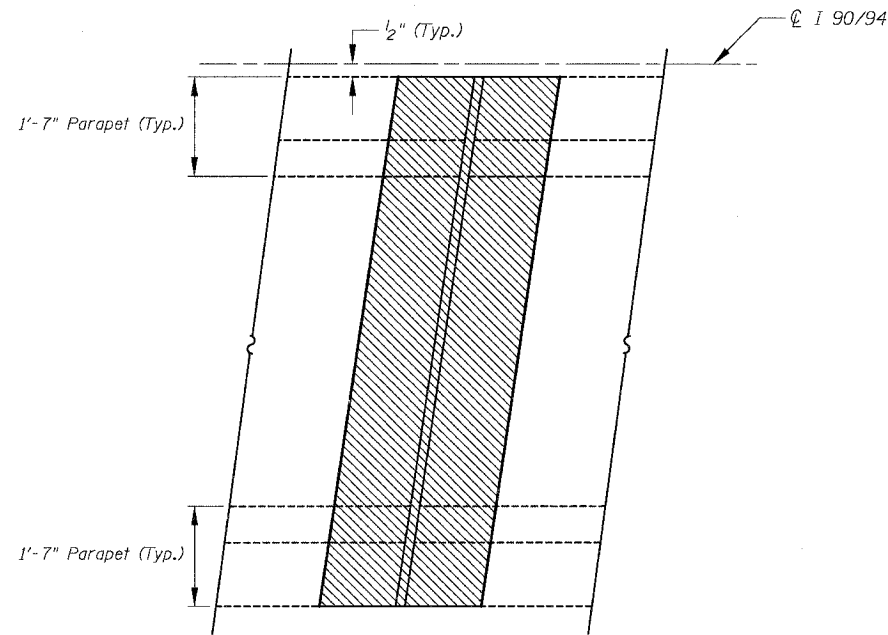
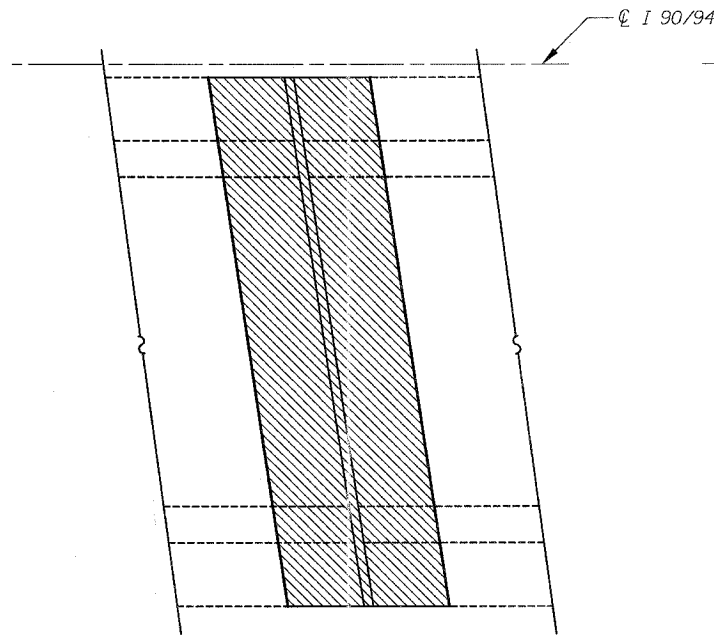


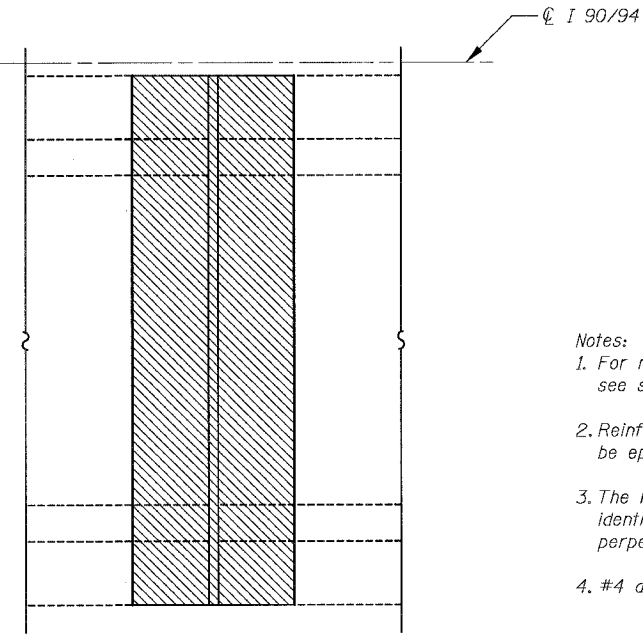
F.A.I.	SECTION	COUNTY	TOTAL SHEETS	SHEET NO.
94/90	2003-028F	COOK	419	164
STA.	TO STA.			
FED. ROAD DIST. NO.	ILLINOIS FED. AID PROJECT			
62580				



**EXISTING PARTIAL PLAN
(SKEWED LEFT FORWARD)**

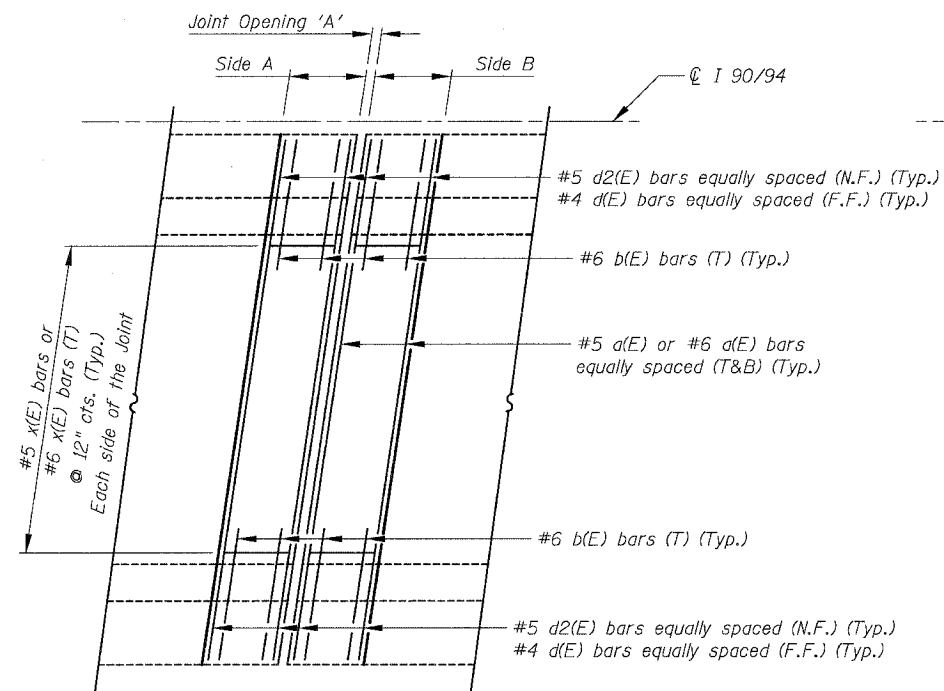


**EXISTING PARTIAL PLAN
(SKEWED RIGHT FORWARD)**

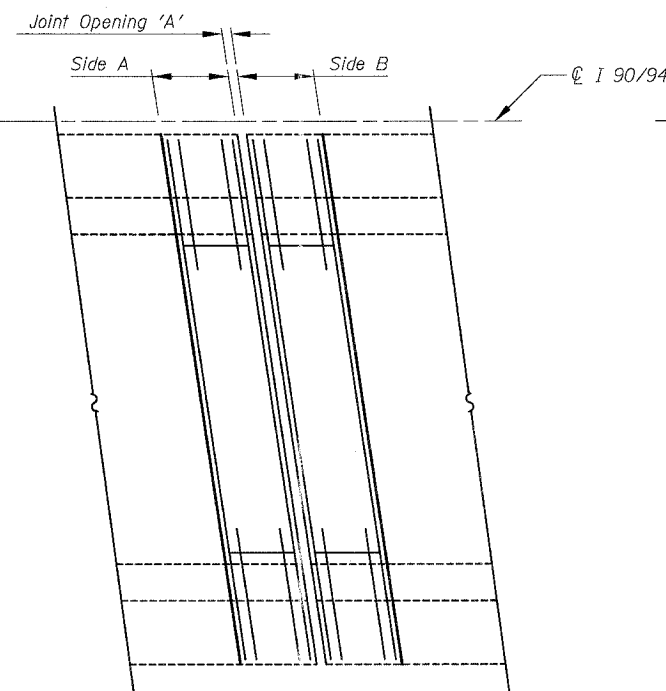


**EXISTING PARTIAL PLAN
(NO SKEW)**

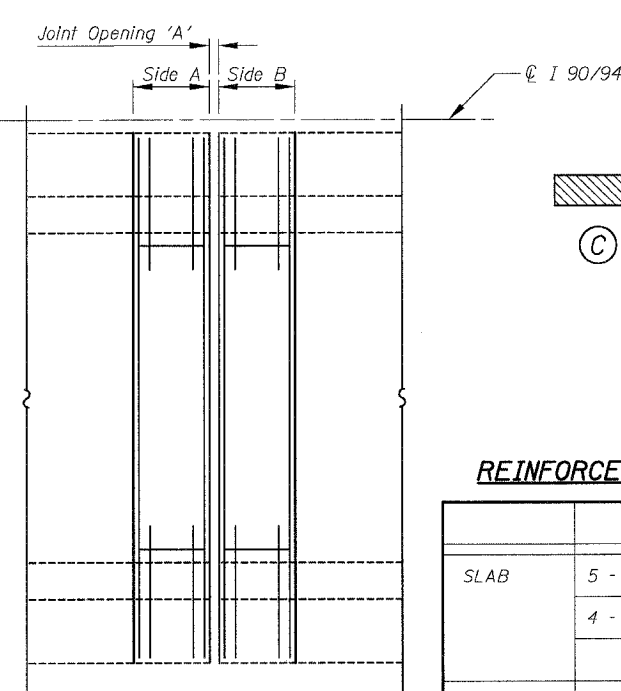
- Notes:
- For number of bars required per joint see sheets 171 to 177 for "Bar Details".
 - Reinforcement bars designated (E) shall be epoxy coated.
 - The left forward and right forward are identified as per skew angle from the perpendicular line to the ϕ of the roadway.
 - #4 d(E) Denotes #4 d1(E), #4 d3(E), #4 d4(E), #4 d5(E), #4 d6(E), #4 d7(E), #4 d8(E), etc.
 - Bend bars in the field as required.
 - Joint Opening 'A' is measured perpendicular to the joint.



**(A) PROPOSED PARTIAL PLAN
(NON-STAGED CONSTRUCTION)
(SKEWED LEFT FORWARD)**



**(B) PROPOSED PARTIAL PLAN
(NON-STAGED CONSTRUCTION)
(SKEWED RIGHT FORWARD)**



**(C) PROPOSED PARTIAL PLAN
(NON-STAGED CONSTRUCTION)
(NO SKEW)**

- LEGEND**
- Concrete Removal / Joint Reconstruction
 - Designation 2 Staged and Non-Staged Construction

- ABBREVIATION**
- N.F. Near Face
 - F.F. Far Face

REINFORCEMENT BARS LOCATION

	Side A or Side B (2'-0")	Side A or Side B (3'-6" or 4'-0")
SLAB	5 - #5 d(E) or #6 a(E) (T)	8 - #5 d(E) or #6 d(E) (T)
	4 - #5 a(E) or #6 a(E) (B)	6 - #5 a(E) or #6 d(E) (B)
	3 - #6 b(E) (T)	3 - #6 b(E) (T)
PARAPET	3 - #4 d(E) (F.F.)	5 - #4 d(E) (F.F.)
	3 - #5 d2(E) (N.F.)	5 - #5 d2(E) (N.F.)

BOWMAN, BARRETT & ASSOCIATES INC.
CONSULTING ENGINEERS
Chicago, Illinois 312 228 0100
www.bbainc.com

REVISIONS	NAME	DATE

ILLINOIS DEPARTMENT OF TRANSPORTATION
F.A.I. 94/90 (DAN RYAN EXPRESSWAY)
NB DAN RYAN ELEVATED BRIDGE
REPAIR FROM 15TH TO 28TH STREETS
TYPICAL PARTIAL PLAN
AT NON-STAGED ROADWAYS

SCALE: NTS DRAWN BY: BDC
DATE: 8/12/2005 CHECKED BY: BLU

8/17/2005 11:54:42 AM