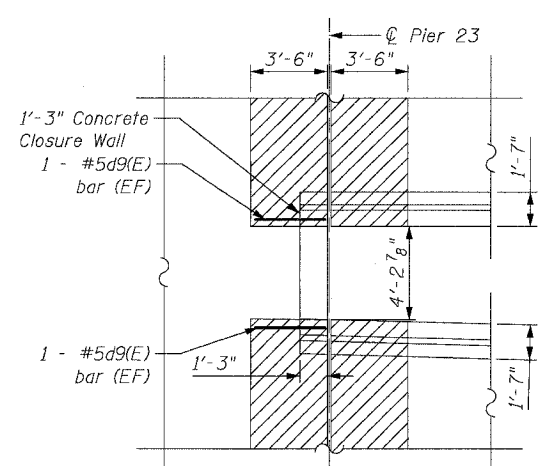


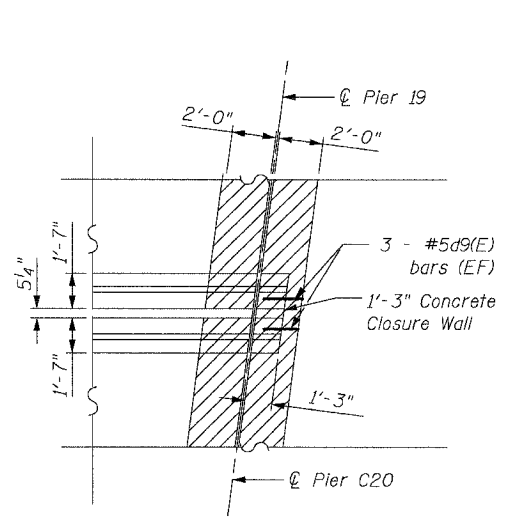
~~Page 167 is DELETED~~

F.A.I.	SECTION	COUNTY	TOTAL SHEETS	SHEET NO.
94/90	2003-02BF	COOK	419	168
STA.		TO STA.		
FED. ROAD DIST. NO.	ILLINOIS FED. AID PROJECT			

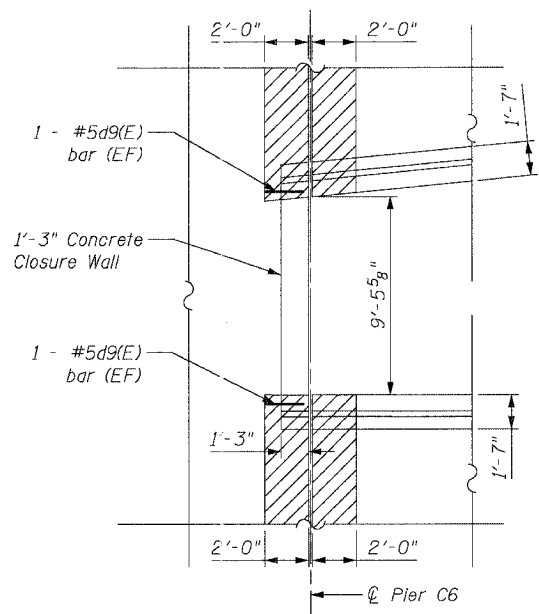
62580



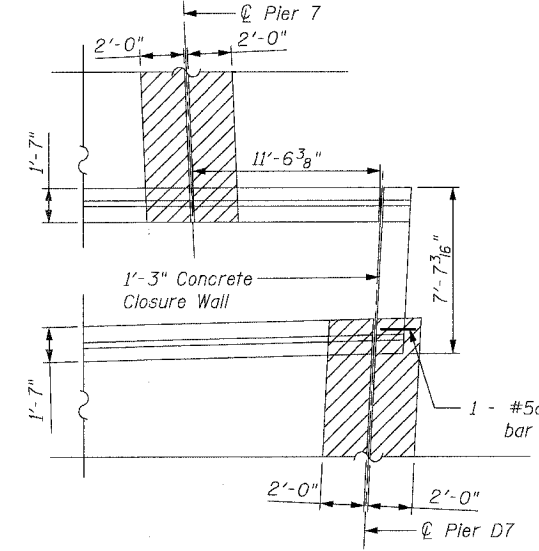
CLOSURE WALL DETAIL
SN 016-0137 PIER 23
 (NTS)



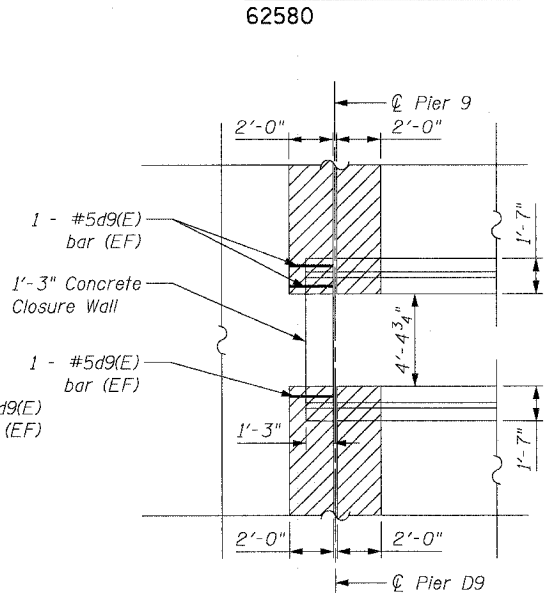
CLOSURE WALL DETAIL
SN 016-1112 PIER 19 / PIER C20
 (NTS)



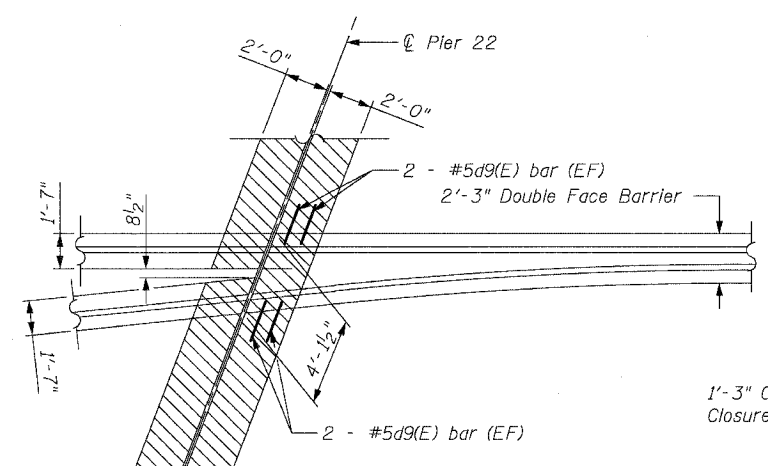
CLOSURE WALL DETAIL
SN 016-1113 PIER C6
 (NTS)



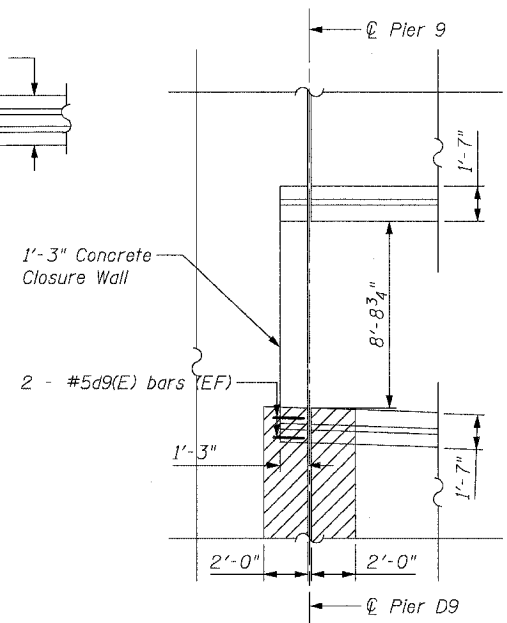
CLOSURE WALL DETAIL
SN 016-1113 PIER 7 / PIER D7
 (NTS)



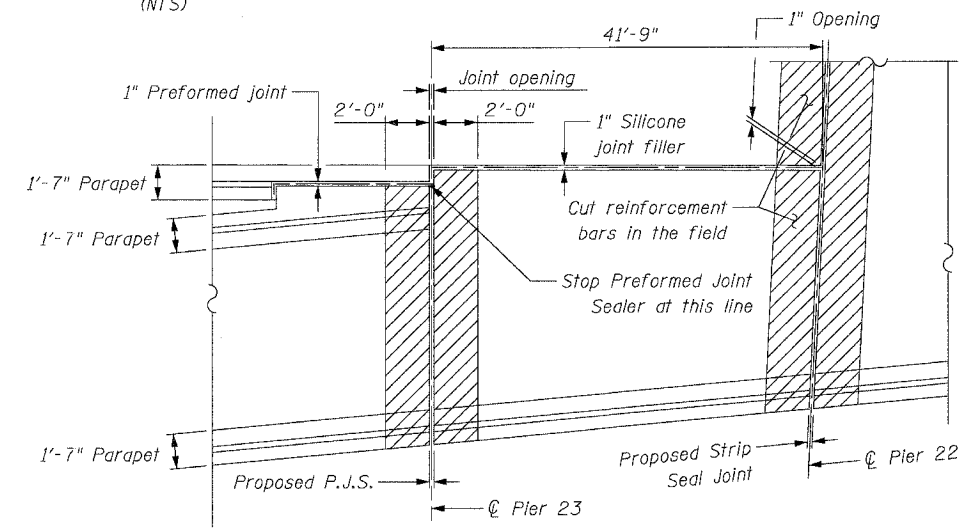
CLOSURE WALL DETAIL
SN 016-1113 PIER 9 / PIER D9
 (NTS)



CLOSURE WALL DETAIL
SN 016-1114 PIER 22
 (NTS)



CLOSURE WALL DETAIL
SN 016-1115 PIER 4
 (NTS)

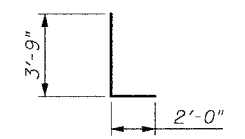


CLOSURE WALL DETAIL
SN 016-1047 PIER 22 & 23
 (NTS)

CLOSURE WALL REINFORCEMENT BAR SCHEDULE

STRUCTURE	PIER	MARK	NUMBER	SIZE	LENGTH	SHAPE
016-0137	23	d9	4	#5(E)	5'-9"	L
016-1112	19/C20	d9	6	#5(E)	5'-9"	L
016-1113	9/D9	d9	4	#5(E)	5'-9"	L
	7/D7	d9	2	#5(E)	5'-9"	L
016-1114	C6	d9	4	#5(E)	5'-9"	L
	22	d9	4	#5(E)	5'-9"	L
016-1115	4	d9	4	#5(E)	5'-9"	L
016-1117	14	d9	4	#5(E)	5'-9"	L
016-1118	H12	d9	4	#5(E)	5'-9"	L

BAR TYPE



(Cut d9 bar in the field to fit the Closure Wall)

JOINT REMOVAL BILL OF MATERIALS

ITEM DESCRIPTION	UNIT	QUANTITY	016-0137	016-1112	016-1113	016-1115	016-1117	016-1118
Reinforcement Bars Epoxy Coated	POUND	180	20	30	50	40	20	20

BOWMAN, BARRETT & ASSOCIATES INC.
 CONSULTING ENGINEERS
 Chicago, Illinois
 312.228.0100
 www.bbainc.com

Note:
 For locations of closure walls see Partial Deck Plans

REVISIONS	DATE
NAME	

ILLINOIS DEPARTMENT OF TRANSPORTATION
 F.A.I. 94/90 (DAN RYAN EXPRESSWAY)
 NB DAN RYAN ELEVATED BRIDGE
 REPAIR FROM 15TH TO 28TH STREETS
 CLOSURE WALL
 GENERAL DETAILS
 SCALE: NTS
 DATE: 8/12/2005
 DRAWN BY: BDC
 CHECKED BY: BLU

8/11/2005 11:54:43 AM
 I:\5443 AM
 11/15/2005 8:11:20 AM