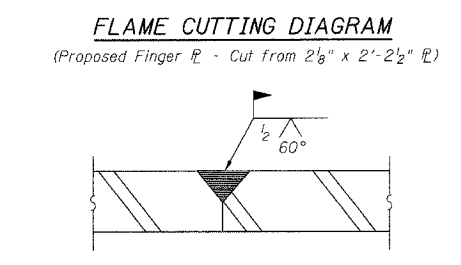
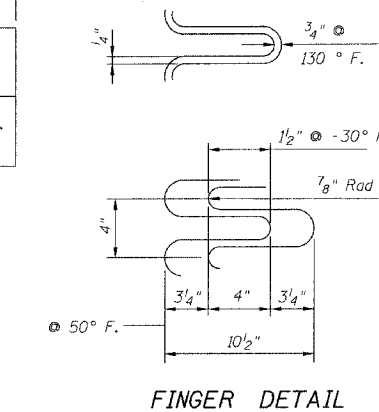
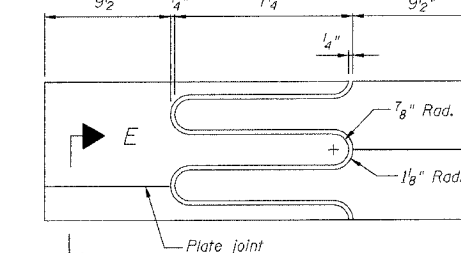
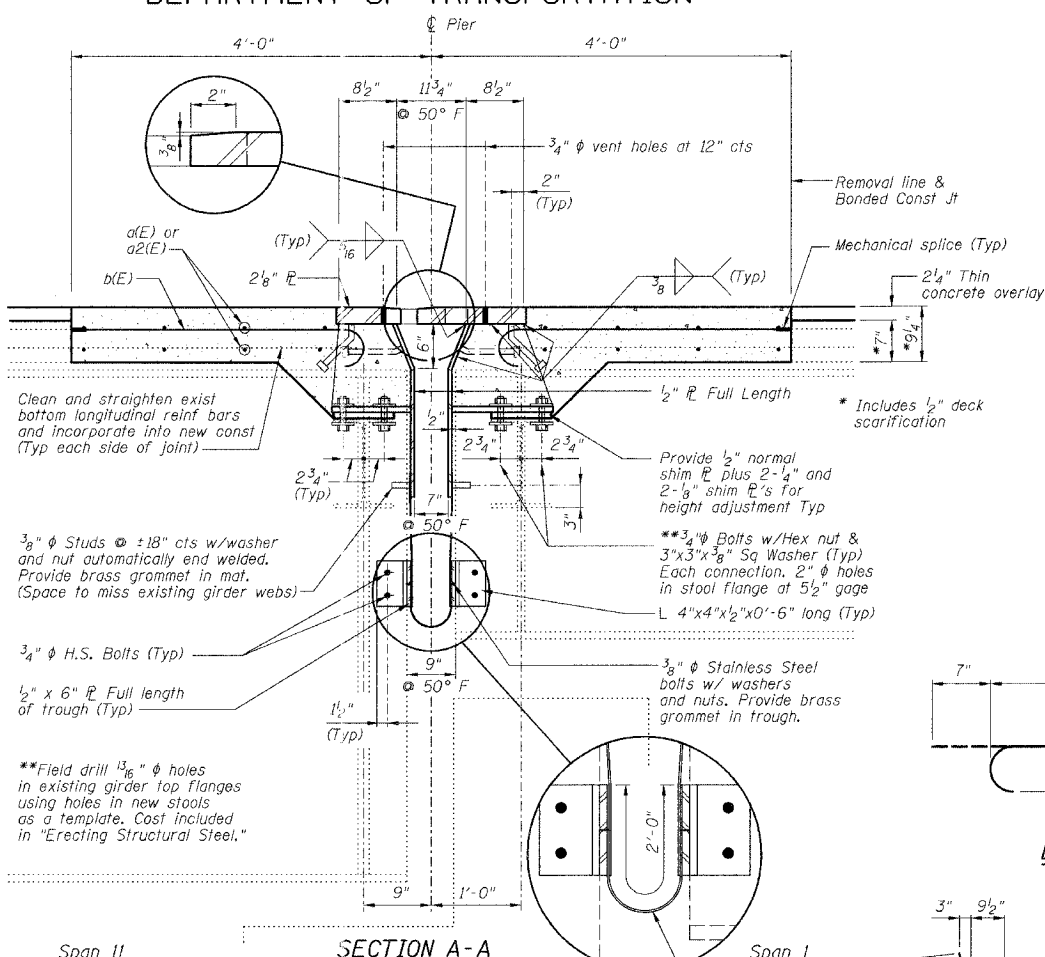
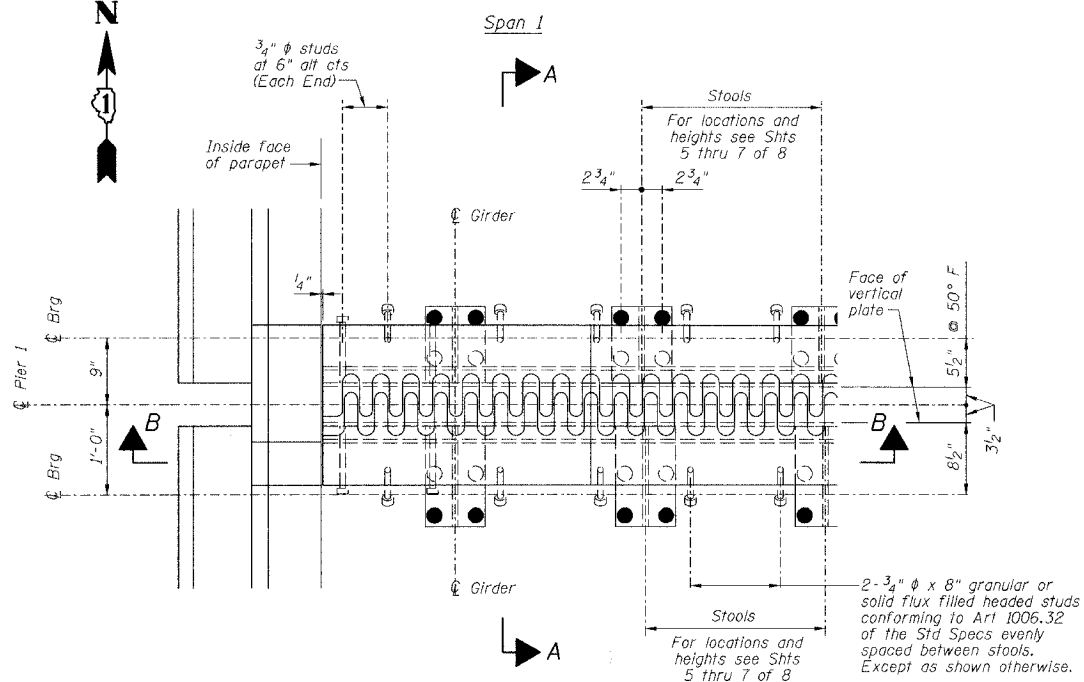


STATE OF ILLINOIS
DEPARTMENT OF TRANSPORTATION

ROUTE NO.	SECTION	COUNTY	TOTAL SHEETS	SHEET NO.
FAI 90/94		COOK	419	182
FED. ROAD DIST. NO.		ILLINOIS PROJECT		

Sheet No 4
of 8 Sheets

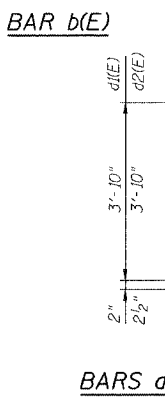
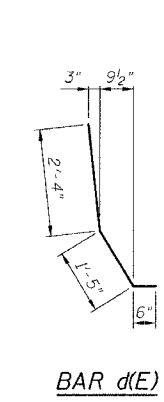
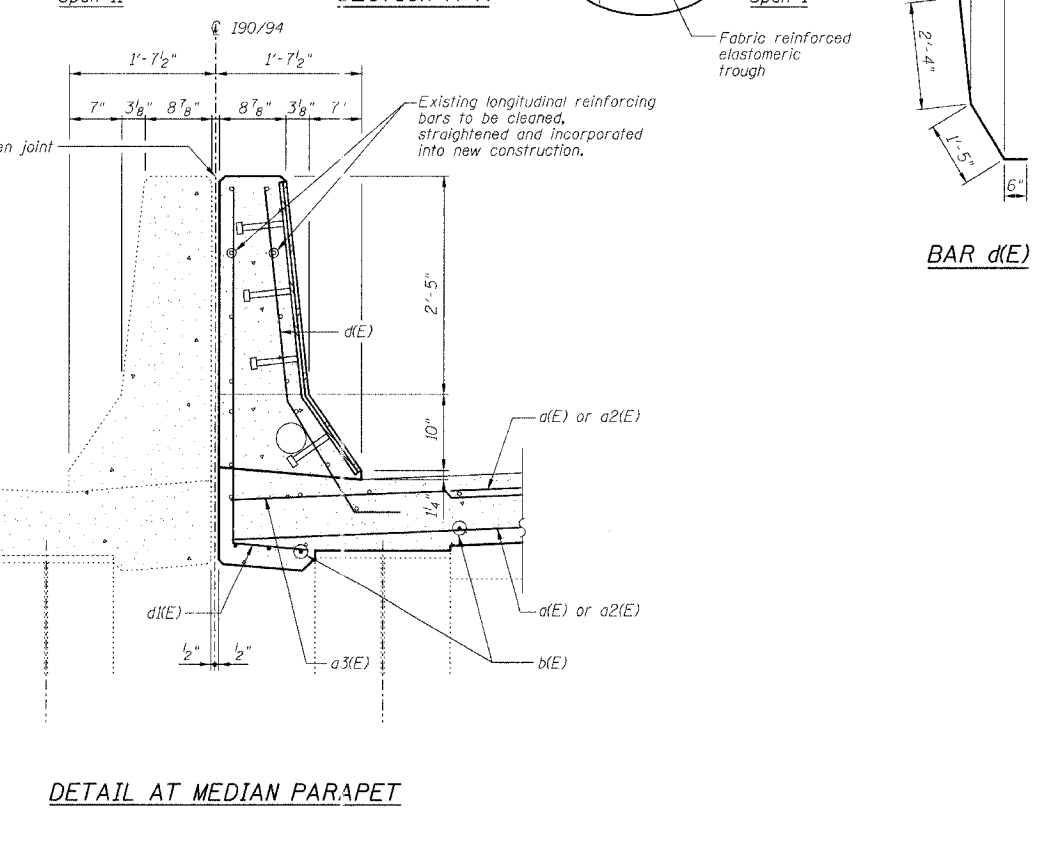
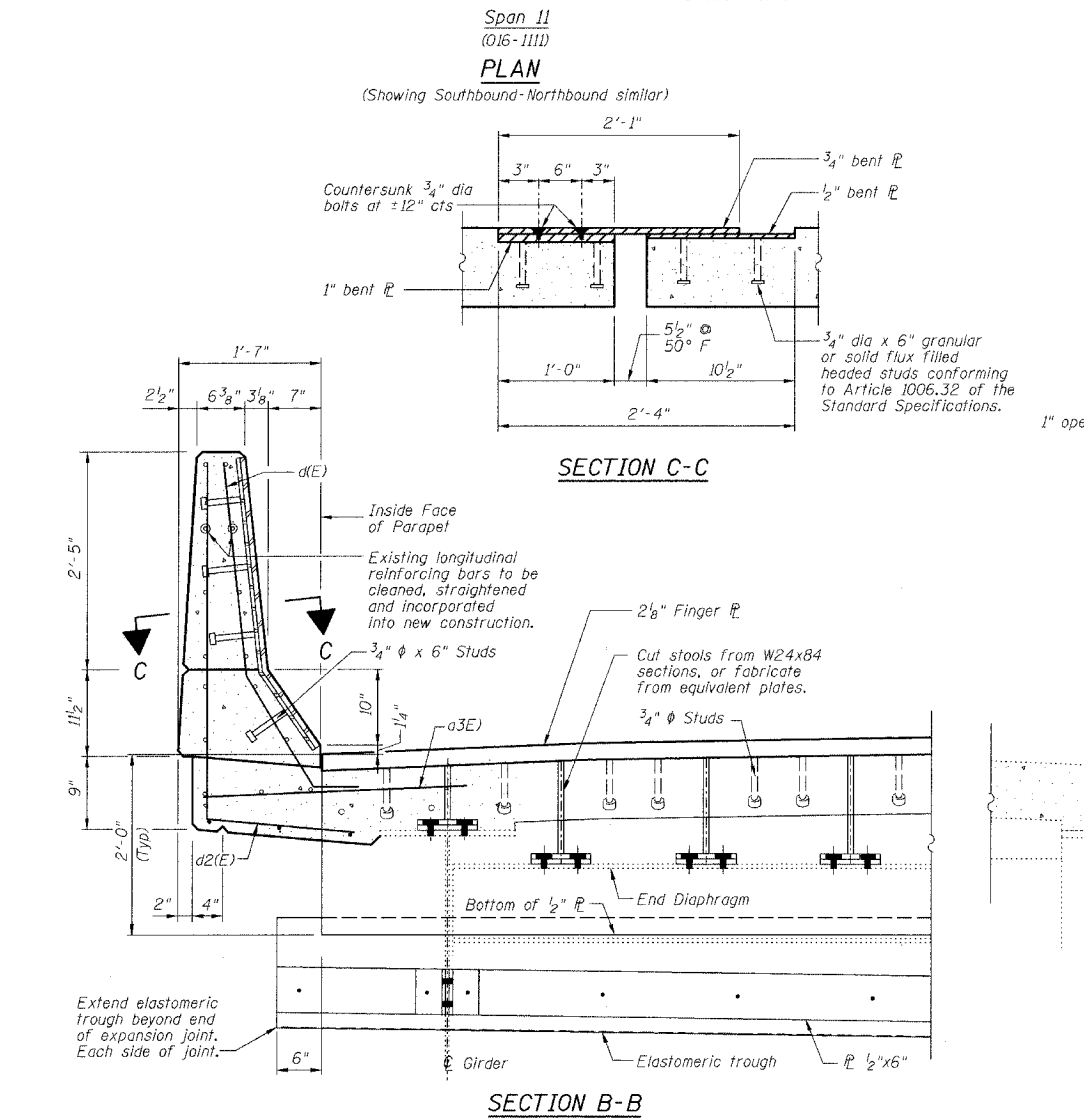
2005-008F
CONTRACT #62580



BILL OF MATERIAL

Bar	No.	Size	Length	Shape
d(E)	24	#5	35'-0"	—
a2(E)	24	#5	31'-0"	—
a3(E)	16	#6	4'-6"	—
b(E)	132	#5	3'-10"	—
d(E)	16	#5	4'-3"	—
d(E)	8	#5	4'-10"	—
a2(E)	8	#5	5'-10"	—
Reinforcement Bars, Epoxy Coated		Pound	2450	
Concrete Removal		Cu Yd	17.3	
Concrete Superstructure		Cu Yd	20.1	
Bar Splicers		Each	24	
Mechanical Splice		Each	132	

Reinforcing bars designated (E) shall be epoxy coated.



NOTES

- The Contractor shall bolt the Stools of the Fingerplate Joint Assembly to the top of existing End Cross Frames and to the top of the existing girders, as shown in Section A-A of this drawing.
- Stainless steel bolts, washers and nuts shall meet the requirements of ASTM A193.
- The installation of all necessary hardware, stainless steel bolts, studs and washers, plates and angles shall be included with "Erecting Structural Steel".
- Expansion Length = 403.6'

PIER NO. 1

REVISIONS		STATE OF ILLINOIS DEPARTMENT OF TRANSPORTATION DIVISION OF HIGHWAYS		DRAWN BY DATE RLK 5/03
NO.	DATE	INITIALS		CHECKED BY DATE SDS 5/03
1				BOOK NUMBER
2				
3				
4				
5				
6				
7				
8				
9				
10				

FINGER PLATE EXPANSION JOINT DETAILS

FAI RTE 90/94	DAN RYAN EXPRESSWAY	PROJECT No. 4222-3
SN 016-1110 (NORTHBOUND)	COOK COUNTY	SHEET No.
SEC 2005-008F		

HOMER L. CHASTAIN & ASSOCIATES
CONSULTING ENGINEERS
8800 W. BIRN MAWR AVENUE
SUITE 204
CHICAGO, ILLINOIS 60631
312-714-0050
FAX 312-714-0055