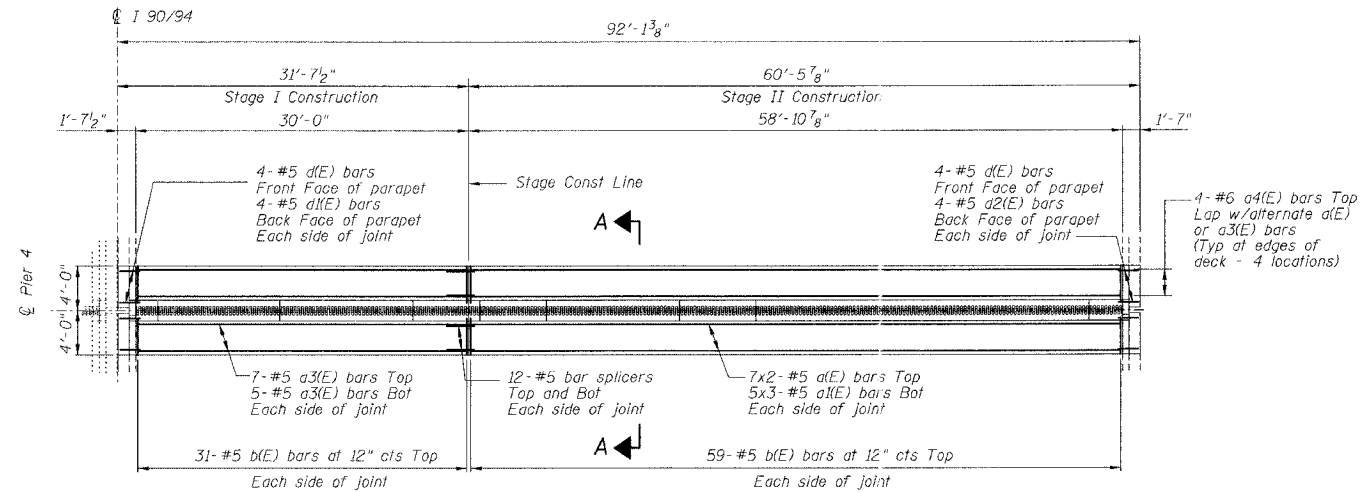


STATE OF ILLINOIS
DEPARTMENT OF TRANSPORTATION

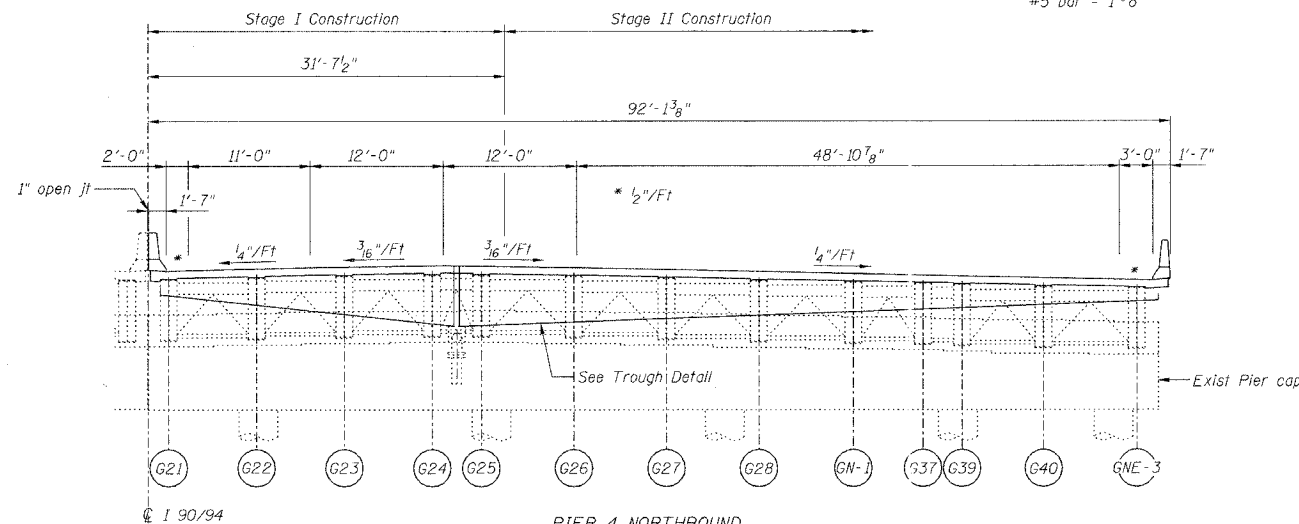
ROUTE NO.	SECTION	COUNTY	TOTAL SHEETS	SHEET NO.
FAI 90/94		COOK	419	187
FED. ROAD DIST. NO.	ILLINOIS PROJECT			
2005-008F				

Sheet No 3
of 8 Sheets

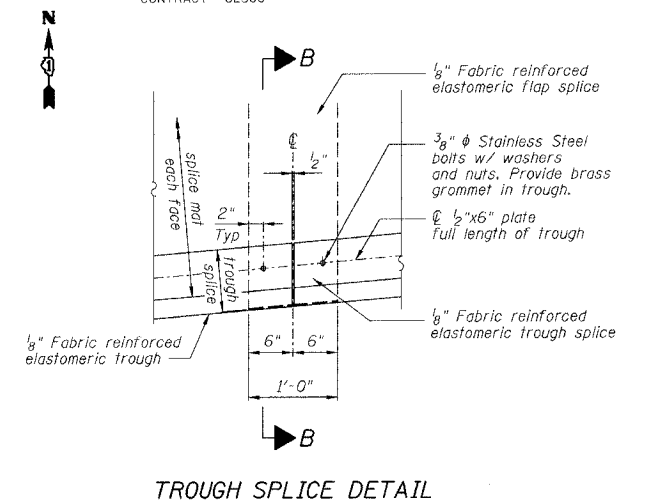


FINGER PLATE AT PIER 4 NORTHBOUND
JOINT RECONSTRUCTION PLAN AT PIER 4
(Dimensions along \bar{C} Pier)

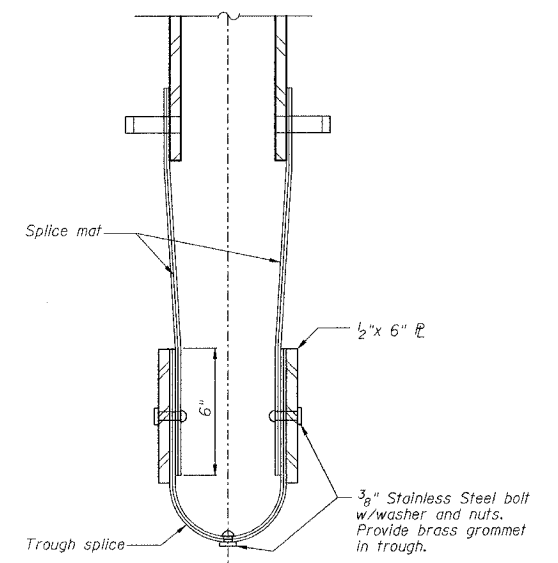
MIN BAR LAP
#5 bar = 1'-8"



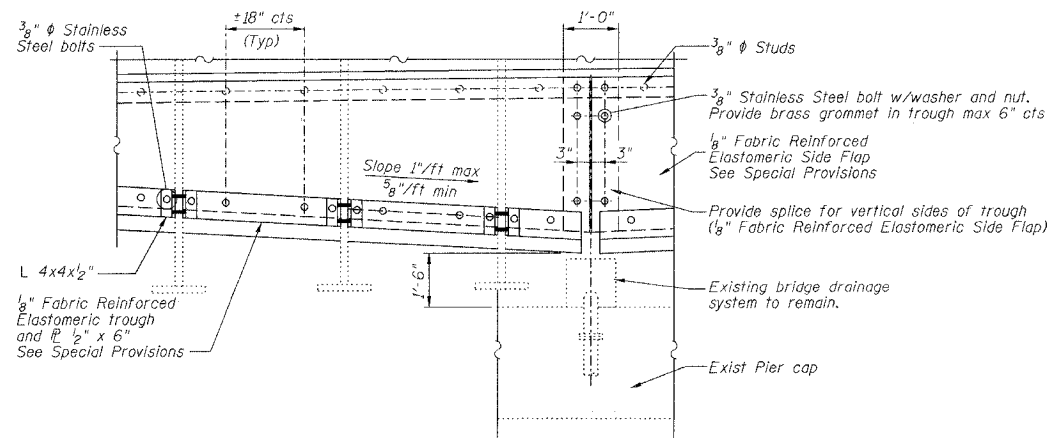
PIER 4 NORTHBOUND
ELEVATION AT PIER 4 (LOOKING NORTH)
(Dimensions along \bar{C} Pier)



TROUGH SPLICE DETAIL



SECTION B-B



TROUGH DETAIL

NOTES

Bars indicated thus 4x2-#5 etc indicates 4 lines of bars with 2 lengths per line.
For Section A-A see Sheet 4 of 8.

PIER NO. 4

REVISIONS			STATE OF ILLINOIS DEPARTMENT OF TRANSPORTATION DIVISION OF HIGHWAYS		DRAWN BY RLK	DATE 5/03
1	DATE	INITIALS			CHECKED BY	DATE
2					SDS	5/03
3					BOOK NUMBER	
4			FAI RTE 90/94 DAN RYAN EXPRESSWAY		PROJECT NO.	
5			SN 016-1110 (NORTHBOUND)		PROJECT NO.	4222-3
6			SEC 2005-008F COOK COUNTY		SHEET NO.	
7			HOMER L. CHASTAIN & ASSOCIATES		6600 W. BRYAN MAWR AVENUE SUITE 204 CHICAGO, ILLINOIS 60631 312-714-0000 FAX 312-714-0000	