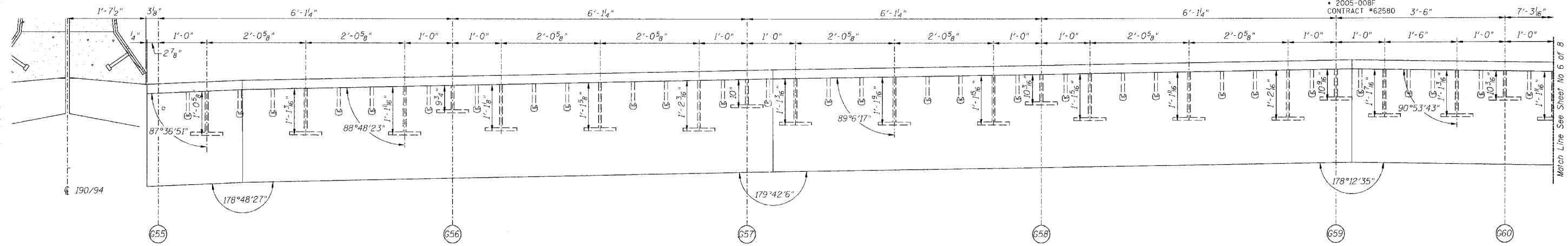


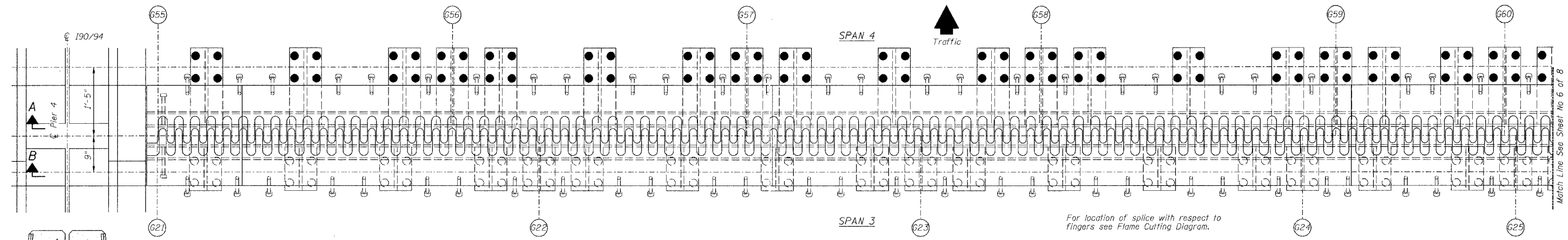
STATE OF ILLINOIS
DEPARTMENT OF TRANSPORTATION

ROUTE NO.	SECTION	COUNTY	TOTAL SHEETS	SHEET NO.
90/94		COOK	419	171
FEDERAL DIST. NO.		ILLINOIS PROJECT		
2005-008F		CONTRACT #62580		

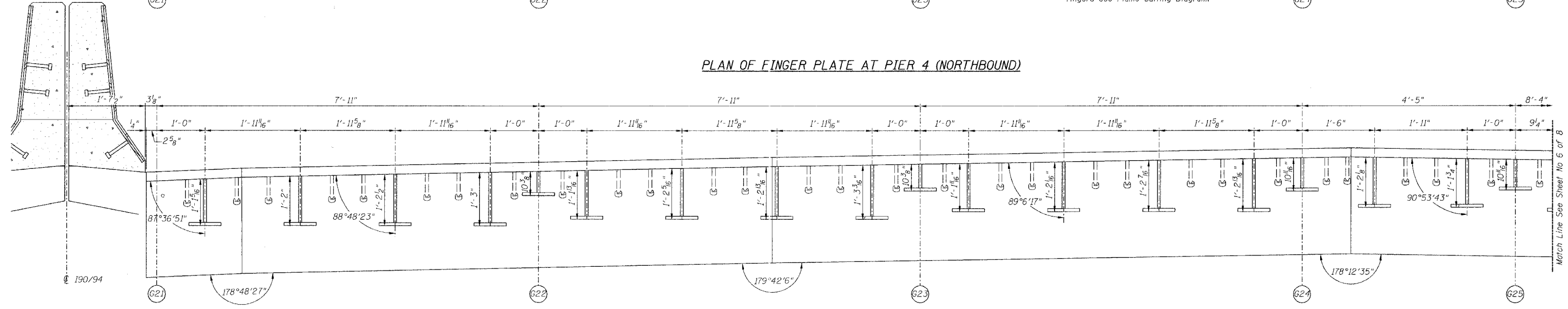
Sheet No 5
of 8 Sheets



SECTION A-A



PLAN OF FINGER PLATE AT PIER 4 (NORTHBOUND)



SECTION B-B

For location of splice with respect to fingers see Flame Cutting Diagram.

Note:
For optional splice detail see flame cutting diagram on Sheet No. 4
All dimensions, except stool heights are given along centerline of bearing.

REVISIONS		STATE OF ILLINOIS DEPARTMENT OF TRANSPORTATION DIVISION OF HIGHWAYS		DRAWN BY RLK	DATE 5/03
1		FAI RTE 90/94	DAN RYAN EXPRESSWAY	CHECKED BY SDS	DATE 5/03
2		SN 016-1110 (NORTHBOUND)	COOK COUNTY	BOOK NUMBER	
3		SEC 2005-008F		PROJECT NO.	4222-3
4				SHEET NO.	
5					
6					
7					
8					
9					
10					

HOMER L.
CHASTAIN
& ASSOCIATES
CONSULTING ENGINEERS

800 W. BIRNIE MARSH AVENUE
SUITE 204
CHICAGO, ILLINOIS 60611
312-774-0000
FAX 312-774-0055

Match Line See Sheet No 6 of 8

Match Line See Sheet No 6 of 8

Match Line See Sheet No 6 of 8

