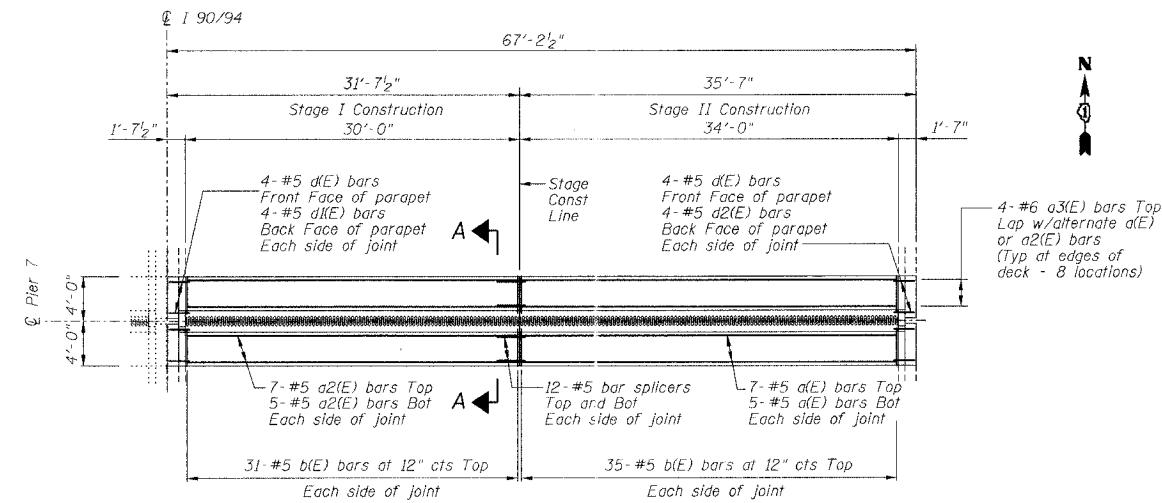


STATE OF ILLINOIS  
DEPARTMENT OF TRANSPORTATION

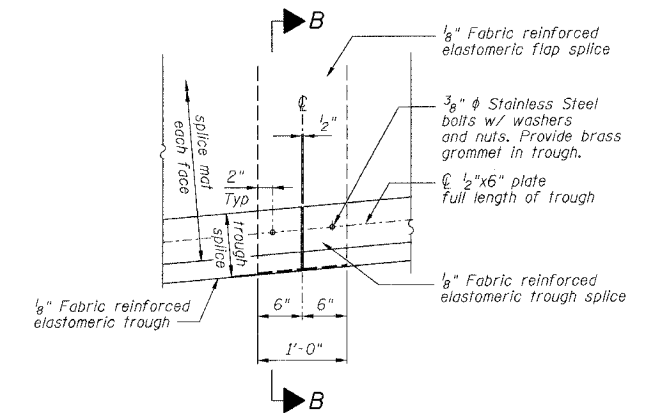
| ROUTE NO.         | SECTION  | COUNTY  | TOTAL SHEETS | SHEET NO. |
|-------------------|----------|---------|--------------|-----------|
| FAI 90/94         | *        | COOK    | 419          | 177       |
| FEDERAL DIST. NO. | ILLINOIS | PROJECT |              |           |

Sheet No 3  
of 8 Sheets

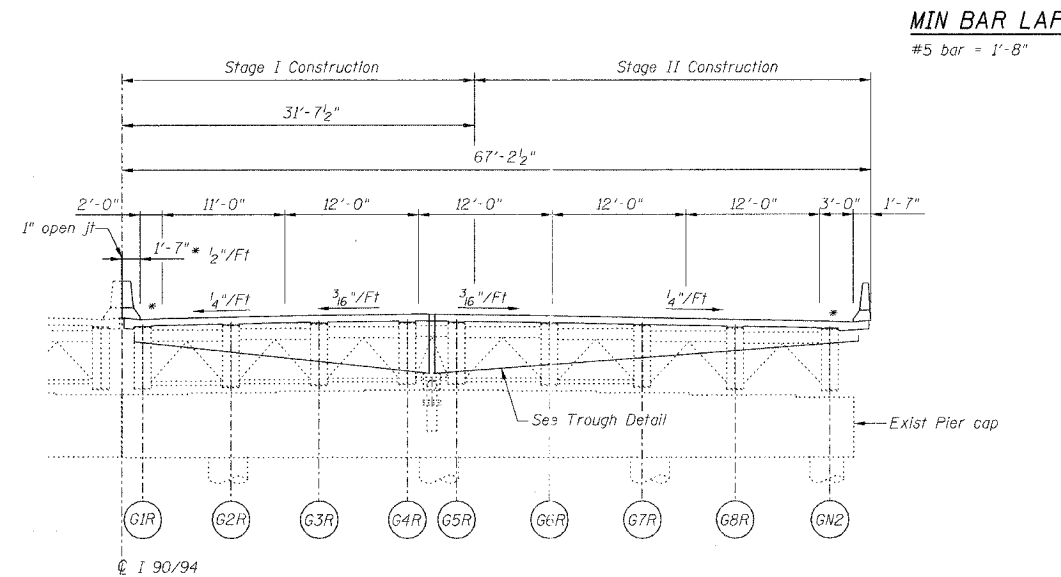
\* 2005-008F  
CONTRACT #62580



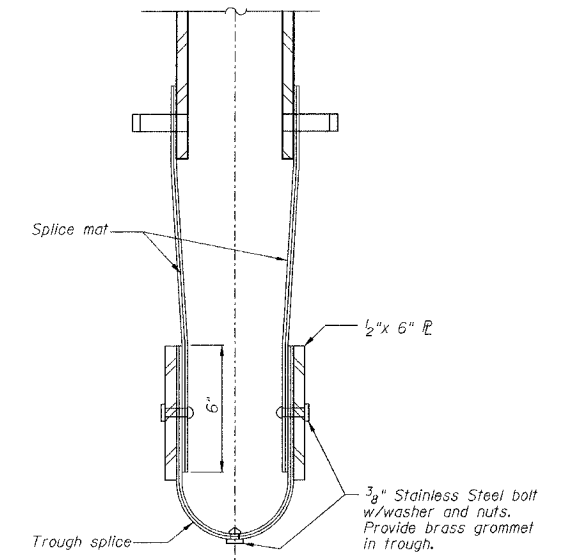
FINGER PLATE AT PIER 7 NORTHBOUND  
JOINT RECONSTRUCTION PLAN AT PIER 7



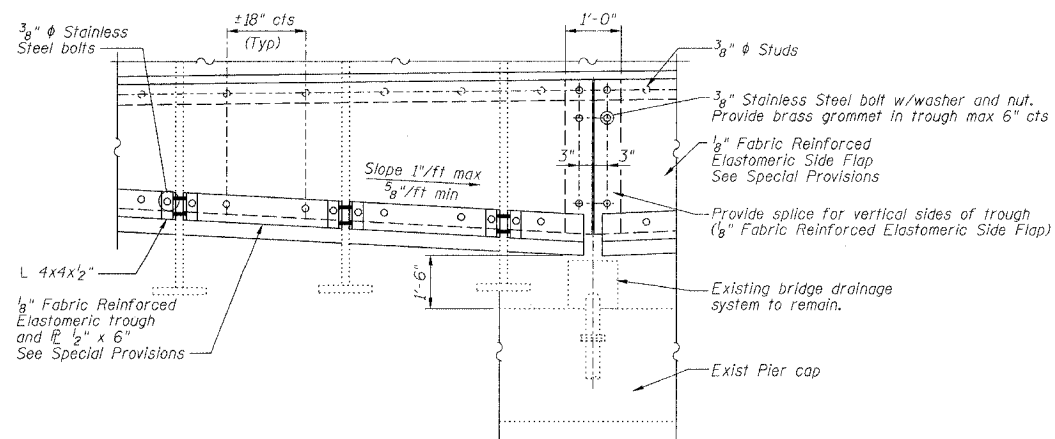
TROUGH SPLICE DETAIL



PIER 7 NORTHBOUND  
ELEVATION AT PIER 7 (LOOKING NORTH)



SECTION B-B



TROUGH DETAIL

NOTES  
For Section A-A see Sheet 4 of 8.

| REVISIONS |      | STATE OF ILLINOIS<br>DEPARTMENT OF TRANSPORTATION<br>DIVISION OF HIGHWAYS |  | DRAWN BY DATE<br>RLK 5/03   |
|-----------|------|---|--|-----------------------------|
| 1         | DATE | INITIALS  |  | CHECKED BY DATE<br>SDS 5/03 |
| 2         |      |   |  | BOOK NUMBER                 |
| 3         |      |   |  | PROJECT No.                 |
| 4         |      |   |  | 4222-3                      |
| 5         |      |   |  | SHEET NO.                   |
| 6         |      |   |  |                             |
| 7         |      |   |  |                             |
| 8         |      |   |  |                             |
| 9         |      |   |  |                             |
| 10        |      |   |  |                             |

PIER NO. 7

FINGER PLATE EXPANSION JOINT DETAILS

FAI RTE 90/94 DAN RYAN EXPRESSWAY  
SN 016-1111 (NORTHBOUND)  
SEC 2005-008F COOK COUNTY

HOMER L.  
CHASTAIN & ASSOCIATES  
CONSULTING ENGINEERS  
8800 W. BRYN MAWR AVENUE  
SUITE 904  
CHICAGO, ILLINOIS 60631  
312-714-0050  
FAX 312-714-0050