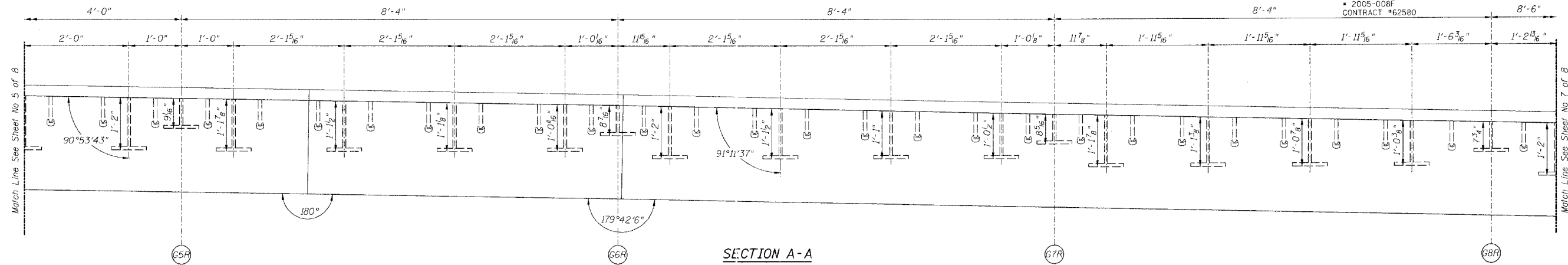


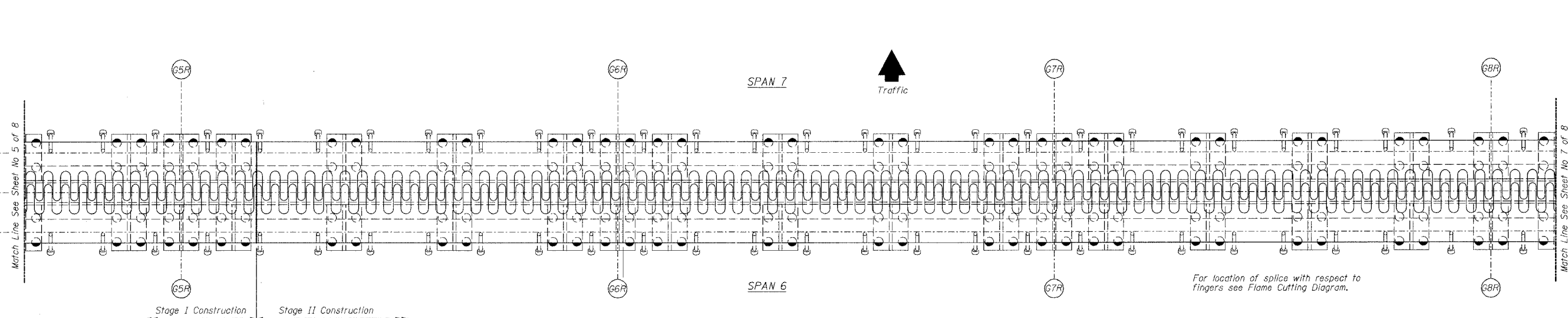
STATE OF ILLINOIS
DEPARTMENT OF TRANSPORTATION

ROUTE NO.	SECTION	COUNTY	TOTAL SHEETS	SHEET NO.
90/94	*	COOK	419	200
FEDROAD DIST. NO.	ILLNOIS PROJECT			
2005-008F	CONTRACT #62580			

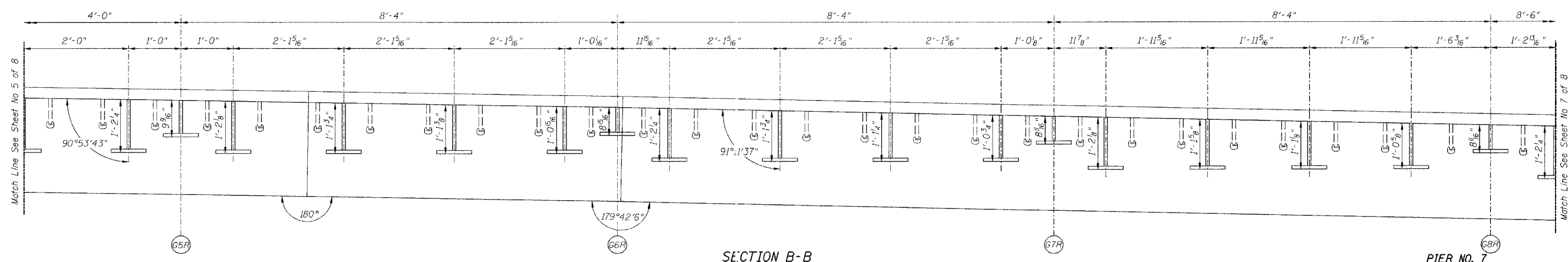
Sheet No 6
of 8 Sheets



SECTION A-A



PLAN OF FINGER PLATE AT PIER 7 (NORTHBOUND)



SECTION B-B

PIER NO. 7

For location of splice with respect to fingers see Flame Cutting Diagram.

Note:
For optional splice detail see flame cutting diagram on Sheet No. 4

REVISIONS			STATE OF ILLINOIS DEPARTMENT OF TRANSPORTATION DIVISION OF HIGHWAYS		DRAWN BY RLK	DATE 5/03
1			FAI RTE 90/94	DAN RYAN EXPRESSWAY		
2			SN 016-1111 (NORTHBOUND)			
3			SEC 2005-008F	COOK COUNTY		
4						
5						
6						
7						
8						
9						
10						

HOMER L.
CHASTAIN & ASSOCIATES
CONSULTING ENGINEERS
8009 W. BRYAN MAWR AVENUE
SUITE 204
CHICAGO, ILLINOIS 60611
312-744-0050
FAX 312-744-0055

PROJECT NO.
4222-3
SHEET NO.