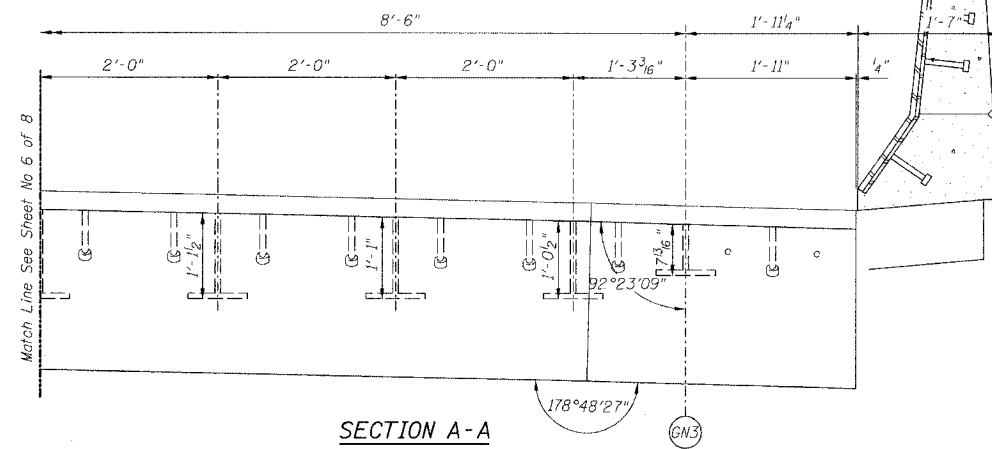


STATE OF ILLINOIS
DEPARTMENT OF TRANSPORTATION

ROUTE NO.	SECTION	COUNTY	TOTAL SHEETS	SHEET NO.
90/94	*	COOK	419	201
FEDERAL DIST. NO.		ILLINOIS	PROJECT	

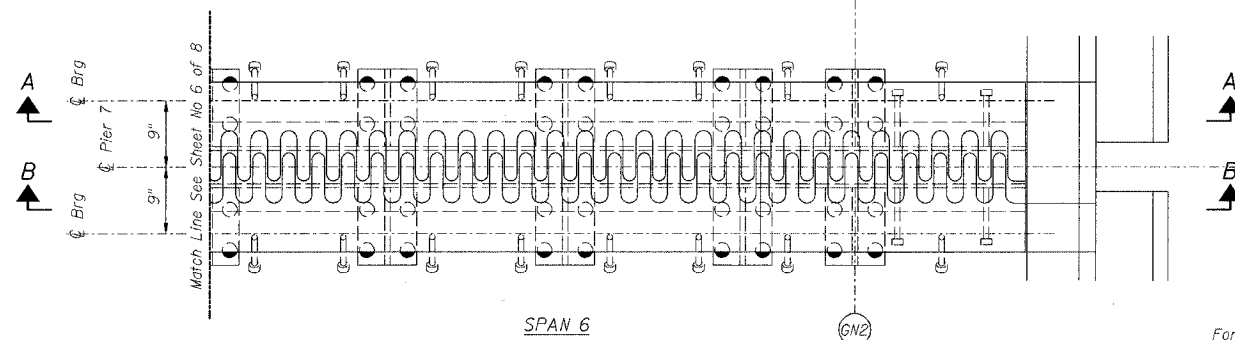
Sheet No 7
of 8 Sheets

* 2005-008F
CONTRACT #62580

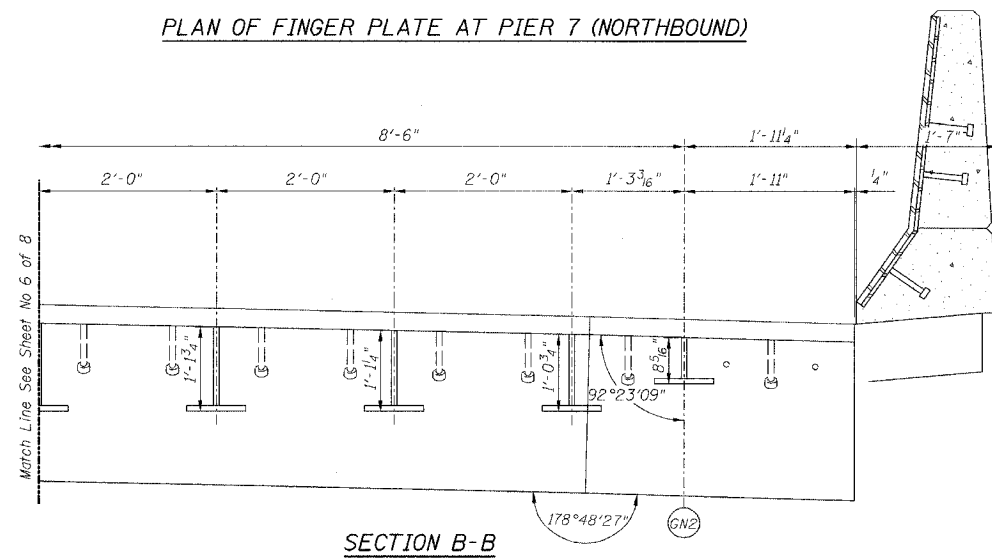


SECTION A-A

SPAN 7



PLAN OF FINGER PLATE AT PIER 7 (NORTHBOUND)



SECTION B-B

For location of splice with respect to fingers see Flame Cutting Diagram.

Note:
For optional splice detail see
Flame cutting diagram on Sheet No. 4

PIER NO. 7

REVISIONS		STATE OF ILLINOIS DEPARTMENT OF TRANSPORTATION DIVISION OF HIGHWAYS		DRAWN BY RLK	DATE 5/03
No.	DATE	INITIALS		CHECKED BY	DATE
1				SDS	5/03
2					
3					
4					
5					
6					
7					
8					
9					
10					

FAI RTE 90/94	DAN RYAN EXPRESSWAY	PROJECT NO.	4222-3
SN 016-1111 (NORTHBOUND)	COOK COUNTY	SHEET NO.	
SEC 2005-008F			

HOMER L. CHASTAIN & ASSOCIATES CONSULTING ENGINEERS	8000 W. BRYAN MAWR AVENUE SUITE 204 CHICAGO, ILLINOIS 60631 812-714-0000 FAX 812-714-0050
---	---